



Chipsmall Limited consists of a professional team with an average of over 10 year of expertise in the distribution of electronic components. Based in Hongkong, we have already established firm and mutual-benefit business relationships with customers from,Europe,America and south Asia,supplying obsolete and hard-to-find components to meet their specific needs.

With the principle of "Quality Parts,Customers Priority,Honest Operation,and Considerate Service",our business mainly focus on the distribution of electronic components. Line cards we deal with include Microchip,ALPS,ROHM,Xilinx,Pulse,ON,Everlight and Freescale. Main products comprise IC,Modules,Potentiometer,IC Socket,Relay,Connector.Our parts cover such applications as commercial,industrial, and automotives areas.

We are looking forward to setting up business relationship with you and hope to provide you with the best service and solution. Let us make a better world for our industry!



## Contact us

Tel: +86-755-8981 8866 Fax: +86-755-8427 6832

Email & Skype: info@chipsmall.com Web: www.chipsmall.com

Address: A1208, Overseas Decoration Building, #122 Zhenhua RD., Futian, Shenzhen, China



Toggles

Rockers

Pushbuttons

Illuminated PB

Programmable

Keylocks

Rotaries

Slides

Tactiles

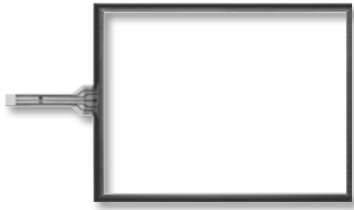
Tilt

Touch

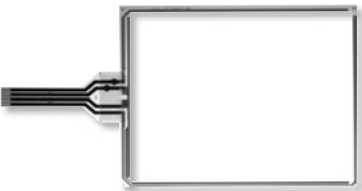
Indicators

Accessories

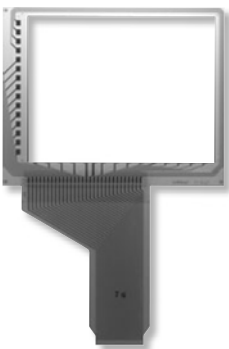
Supplement



5-Wire Touchscreens .....L5



4-Wire Touchscreens .....L8



Digital Touchscreens .....L14



FM Membranes .....L15

# Resistive Touch Screens

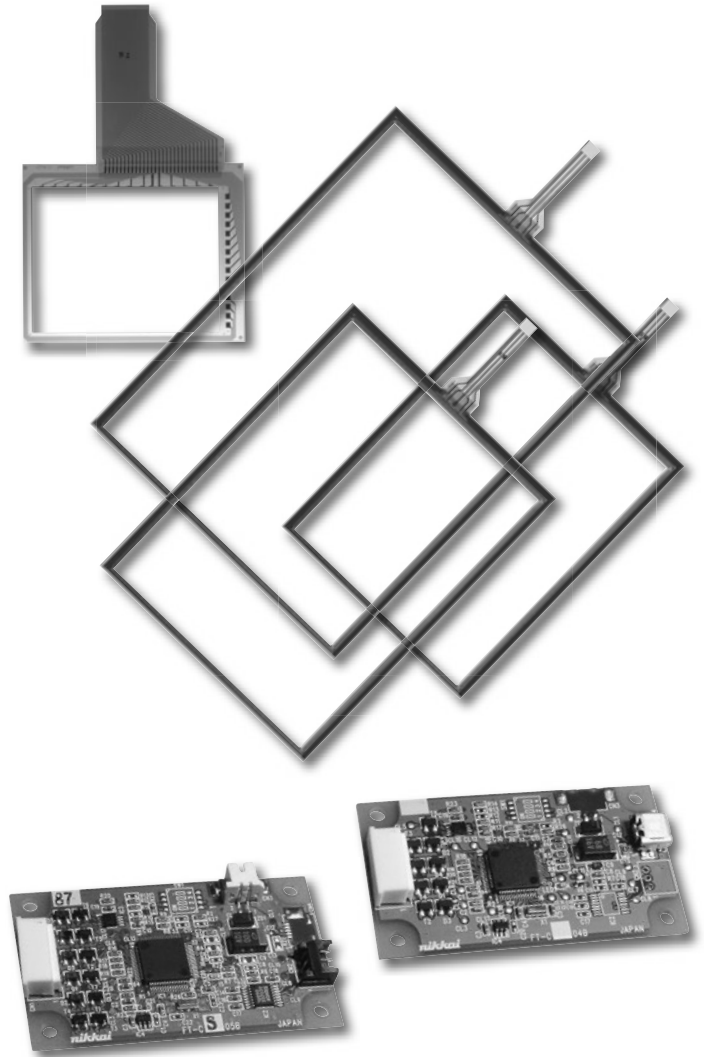
## 5-Wire, 4-Wire & Digital Solutions

NKK's transparent touch screens are engineered to complement the application of choice while offering superior durability and flexibility. With options in multiple sizes, and choices of input by finger, gloved finger or stylus, we maintain a consistent focus on impeccable quality and value added solutions with the diverse needs of our customers at the forefront.

Whether an application requires the 5- or 4-wire technology, the features include metal tails (analog), contact reliability with a connector, and ANR film, eliminating many of the typical visual artifacts. The film surface is non-glare and hard coated for ease of use and integrity of the surface.

Additional benefits of NKK's 5-wire touch screens include:

- Screens highly resistant to static electricity and noise pollution
- Drift-free operation despite any temperature fluctuation
- Greater touch point density translating to more precision and reduction of false actuations
- Quicker response time



### DISTINCTIVE CHARACTERISTICS

- Wide Range of Available Sizes
- Custom Solutions a Specialty
- Digital and Analog Solutions
- Controllers Available
- Anti-Newton Ring (ANR) Technology
- Design Minimizes Visual Artifacts
- RoHS Compliant

### APPLICATIONS

- Information Kiosks
- Industrial Automation
- Banking, Exchange Management Systems
- Broadcast
- Office Automation
- Medical Equipment
- Hand-held Devices
- Hospitality and Restaurant
- Gaming

## Customization Options

| Parameter                            | Notes & Options  |
|--------------------------------------|--|
| Resistive Analog Touch Screen        | 4-Wire or 5-Wire   |
| Integrate LCD & Touchscreen          | Yes - No   |
| 5-Wire - Screen Size Diagonal Inches | Standard 10.4, 12.1, 15 (min 10.4, max 19)                                   |
| 4-Wire - Screen Size Diagonal Inches | Standard 5.7, 6.5, 8.4, 10.4, 12.1, 15 (min 2.5, max 19)                     |
| Data Entry Area mm x mm              | Same as the dimensions of the display area of the LCD                        |
| Viewable Area mm x mm                | Same as the dimensions of the bezel opening of the LCD                       |
| Perimeter Dimensions mm x mm         |  |
| Tail Type                            | PCB standard, FPC option   |
| Tail Pitch                           | 1.25mm is standard   |
| Tail Pins                            | 8 is standard, 4 is option   |
| Tail Length                          | 2 standard options: 65mm or 80mm   |
| Tail Base Width                      | 28.2mm is standard   |
| Tail Location                        | Left side is standard, non-std options top or bottom                         |
| Tail Material                        | Carbon-coated silver is standard, option is copper-gold                      |
| Glass Thickness                      | 1.1 and 1.8mm are standard (note: total thickness = glass thickness + 0.3mm) |
| Hardcoat Treatment                   | Standard   |
| Anti-Newton Ring Treatment           | Standard   |
| Optical Transmission Factor          | 80% is standard  |
| Controller                           | Yes - No (no = customer will supply)   |
| Communication                        | USB or RS232   |
| Operating System                     | Windows 7 or Windows XP  |

Toggle

Rockers

Pushbuttons

PB

Illuminated

Keylocks

Rotaries

Slides

Tactiles

Tilt

Touch

Indicators

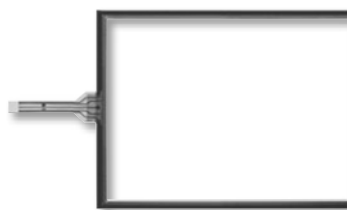
Accessories

Supplement

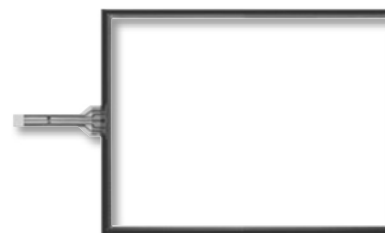
**GENERAL SPECIFICATIONS FOR 5-WIRE**

**5-Wire Resistive Analog Touch Screens**

| Optical                     |  |
|-----------------------------|--|
| Light Transmission          | 80% standard   |
| Film Options                | Anti-glare, anti-Newton ring standard  |
| Electrical                  |  |
| Power Level                 | 5.5V DC  |
| X Y Resistive Value         | 20 ~ 80Ω   |
| Insulation Impedance        | 10MΩ minimum @ 25V DC  |
| Linearity                   | ±2% maximum (after adjustment made by control board or device driver)        |
| Chattering Time             | 10 milliseconds maximum  |
| Mechanical                  |  |
| Touch Activation Force      | 1.47N  |
| Available Sizes             | 10.4", 12.1" and 15.0"   |
| Durability                  |  |
| Surface Hardness            | 2H (JIS K5600)   |
| Expected Operational Life   | Writing: 50,000 minimum operations (approximately 30mm movement with stylus) |
|                             | Tapping: 10,000,000 operations minimum (using silicon rubber)                |
| Environmental               |  |
| Operating Temperature Range | -20°C ~ +70°C (-4°F ~ +158°F)  |
| Storage Temperature Range   | -40°C ~ +80°C (-22°F ~ +158°F)   |
| Relative Humidity           | +60°C (+140°F), humidity 90%, 240 hours                                      |



**FTAS00-104A5**



**FTAS00-121A5**



**FTAS00-150A5**

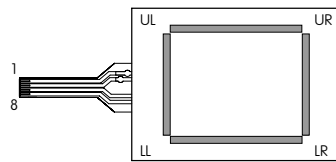
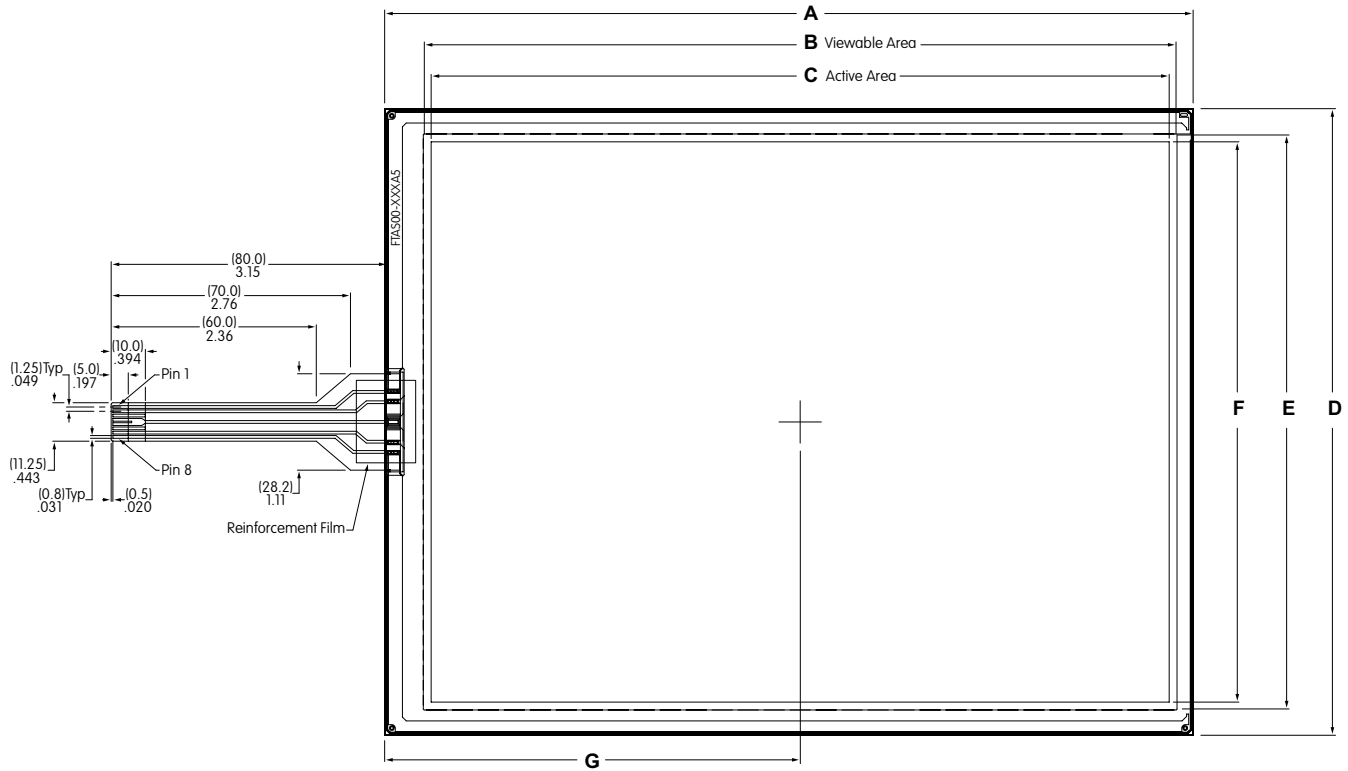
**PART NUMBERS & DESCRIPTIONS FOR 5-WIRE**

| 5-Wire Analog Touch Screens |                       |                                       |                                       |                                       |                  |  |
|-----------------------------|-----------------------|---------------------------------------|---------------------------------------|---------------------------------------|------------------|--|
| Part Number                 | Screen Size in Inches | Key Area Dimensions                   | Viewing Area Dimensions               | External Dimensions                   | Panel Thickness  | Terminal Detail<br>8 Pin<br>.049" (1.25mm) Pitch |
| <b>FTAS00-104A5</b>         | 10.4                  | 8.5" x 6.45"<br>(215.9mm x 163.9mm)   | 8.66" x 6.61"<br>(219.9mm x 167.9mm)  | 9.31" x 7.22"<br>(236.5mm x 183.3mm)  | .083"<br>(2.1mm) | Length<br>3.15" (80.0mm)                         |
| <b>FTAS00-121A5</b>         | 12.1                  | 9.8" x 7.37"<br>(249.0mm x 187.2mm)   | 9.94" x 7.50"<br>(252.4mm x 190.6mm)  | 10.52" x 8.1"<br>(267.1mm x 205.8mm)  | .083"<br>(2.1mm) | Length<br>3.15" (80.0mm)                         |
| <b>FTAS00-150A5</b>         | 15.0                  | 12.05" x 9.06"<br>(306.1mm x 230.1mm) | 12.19" x 9.19"<br>(309.5mm x 233.5mm) | 12.79" x 9.79"<br>(324.8mm x 248.7mm) | .083"<br>(2.1mm) | Length<br>3.15" (80.0mm)                         |

Note: See web site for dimensioned drawings for all 5-Wire Analog Touch Screens.

Toggles  
Rockers  
Pushbuttons  
Illuminated PB  
Programmable  
Keylocks  
Rotaries  
Slides  
Tactiles  
Tilt  
Touch  
Indicators  
Accessories  
Supplement

## GENERAL SPECIFICATIONS FOR 5-WIRE



UL, LL, UR, LR: Bottom Electrode Terminal  
SENSE: Top Electrode Terminal

| Pins | Signal |
|------|--------|
| 1    | UR     |
| 2    | UL     |
| 3    | NC     |
| 4,5  | SENSE  |
| 6    | NC     |
| 7    | LL     |
| 8    | LR     |

### 5-Wire Analog Touch Screen Dimensions

| Part Number         | Screen Size in Inches | Dim A                   | Dim B Viewable Area | Dim C Active Area | Dim D                  | Dim E Viewable Area | Dim F Active Area | Dim G Center of Active Area |
|---------------------|-----------------------|-------------------------|---------------------|-------------------|------------------------|---------------------|-------------------|-----------------------------|
| <b>FTAS00-104A5</b> | 10.4                  | 9.31<br>(236.5) +/-0.3  | 8.66<br>(219.9)     | 8.50<br>(215.9)   | 7.22<br>(183.3) +/-0.3 | 6.61<br>(167.9)     | 6.45<br>(163.9)   | 4.79<br>(121.55)            |
| <b>FTAS00-121A5</b> | 12.1                  | 10.52<br>(267.1) +/-0.3 | 9.94<br>(252.4)     | 9.80<br>(249.0)   | 8.10<br>(205.8) +/-0.3 | 7.50<br>(190.6)     | 7.37<br>(187.2)   | 5.37<br>(136.4)             |
| <b>FTAS00-150A5</b> | 15.0                  | 12.79<br>(324.8) +/-0.3 | 12.19<br>(309.5)    | 12.05<br>(306.1)  | 9.79<br>(248.7) +/-0.3 | 9.19<br>(233.5)     | 9.06<br>(230.1)   | 6.49<br>(164.95)            |

Toggles

Rockers

Pushbuttons

Programmable Illuminated PB

Keylocks

Rotaries

Slides

Tactiles

Tilt

Touch

Indicators

Accessories

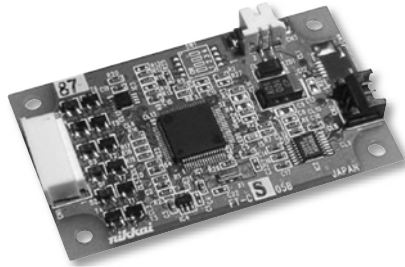
Supplement

**5-Wire Touch Screen Controller Boards & Drivers**

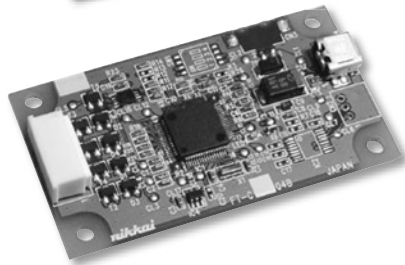
**DISTINCTIVE CHARACTERISTICS**

- High Quality and Reliability
- Easy Integration Replacing Mouse Functionality
- Compatible with Control Board USB/RS232C
- Device Driver Compatible with Vista and Windows XP Operating Systems

**Controller Boards Available for RS232C**



**Controller Boards Available for USB**



NKK offers controller boards compatible with USB or with RS232C. See web site or contact factory for specifications and technical data.

| Controller Boards |                |                        |
|-------------------|----------------|------------------------|
| Type              | Part No.       | Communication Protocol |
| 5-Wire            | <b>FTCS05B</b> | RS232C                 |
| 5-Wire            | <b>FTCU05B</b> | USB                    |

See web site for dimensioned drawings or technical data for any of the controller boards and drivers.

**IC & Accessories**

**DISTINCTIVE CHARACTERISTICS**

- Interface: USB and RS232C
- High Speed and Accuracy
- Built-in Calibration Function
- Data Function Removal Built In to Eliminate Noise



**IC FTCSU564**

The IC is for use with the 5- and 4-wire transparent touch screens, and is available for those who prefer to design their own controller boards. When the screen is touched, it recognizes the position of the touch by the level of analog voltage detected by the A/D. The A/D converter receives the value and sends a set of coordinate values as serial data or USB.

See web site or contact factory for IC specifications.

**OPTIONAL ACCESSORIES**

**AT713 Receptacle Connector**

This Receptacle Connector with code connects to RS232C communication of the controller boards.



**AT714 Receptacle Connector**

AT714 is a Receptacle Connector with code to connect to power source of the control boards.

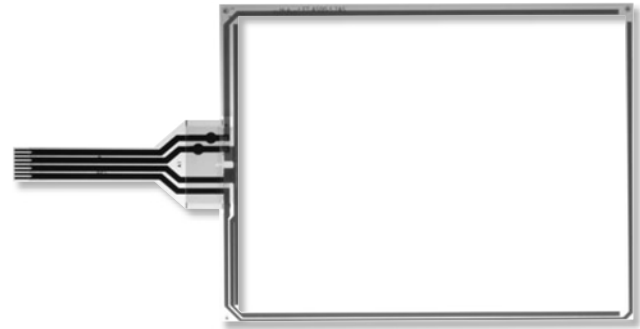


For more details and dimensioned drawings of the accessories, go to the web site or call our engineering support personnel.

## GENERAL SPECIFICATIONS FOR 4-WIRE

### 4-Wire Analog Resistive Touch Screens

| Optical                            |   |
|------------------------------------|---|
| <b>Light Transmission</b>          | Analog: 80% standard<br>Digital: 78% standard |
| <b>Film Options</b>                | Anti-glare, anti-Newton ring standard         |
| Electrical                         |   |
| <b>Power Level</b>                 | 1mA @ 5V DC (resistive load)                  |
| <b>Insulation Impedance</b>        | 10MΩ minimum @ 25V DC                         |
| <b>Linearity</b>                   | 3% maximum (analog)                           |
| <b>Chattering Time</b>             | 10 milliseconds maximum                       |
| Mechanical                         |   |
| <b>Touch Activation Force</b>      | 1.4N maximum                                  |
| <b>Available Sizes</b>             | 5.7" ~ 15" standard                           |
| Durability                         |   |
| <b>Surface Hardness</b>            | 2H (JIS K5600)                                |
| <b>Expected Operational Life</b>   | 1,000,000 operations minimum                  |
| Environmental                      |   |
| <b>Operating Temperature Range</b> | -10°C ~ +60°C (+14°F ~ +140°F)                |
| <b>Storage Temperature Range</b>   | -20°C ~ +70°C (-4°F ~ +158°F)                 |
| <b>Relative Humidity</b>           | +60°C (+140°F), humidity 90%, 240 hours       |



**Analog  
FTAS00-57AS4**

## PART NUMBERS & DESCRIPTIONS FOR 4-WIRE

| 4-Wire Analog Touch Screens |                       |  |  |                                       |                          |  |
|-----------------------------|-----------------------|--|--|---------------------------------------|--------------------------|--|
| Part Number                 | Screen Size in Inches | Key Area Dimensions                    | Viewing Area Dimensions                | External Dimensions                   | Panel Thickness          | * Terminal Detail<br>8 Pin<br>.049" (1.25mm) Pitch |
| <b>FTAS00-57AS4</b>         | 5.7                   | 4.54" x 3.40"<br>(115.2mm x 86.4mm)    | 4.76" x 3.61"<br>(121.0mm x 91.6mm)    | 5.16" x 3.98"<br>(131.0mm x 101.0mm)  | .055"<br>(1.4mm)         | Length<br>2.56" (65.0mm)                           |
| <b>FTAS00-65AS4</b>         | 6.5                   | 5.20" x 3.90"<br>(132.0mm x 99.0mm)    | 5.43" x 4.13"<br>(138.0mm x 105.0mm)   | 5.91" x 4.57"<br>(150.0mm x 116.0mm)  |                          | Length<br>2.56" (65.0mm)                           |
| <b>FTAS00-84AS4</b>         | 8.4                   | 6.73" x 5.10"<br>(170.9mm x 129.6mm)   | 6.95" x 5.33"<br>(176.5mm x 135.4mm)   | 7.34" x 5.69"<br>(186.5mm x 144.4mm)  | .083"<br>(2.1mm)         | Length<br>3.15" (80.0mm)                           |
| <b>FTAS00-104AS4</b>        | 10.4                  | 8.32" x 6.24"<br>(211.2mm x 158.4mm)   | 8.47" x 6.39"<br>(215.0mm x 162.4mm)   | 8.88" x 6.75"<br>(225.6mm x 171.4mm)  |                          | Length<br>3.15" (80.0mm)                           |
| <b>FTAS00-104AV4</b>        | 10.4                  | 8.35" x 6.28"<br>(212.2mm x 159.4mm)   | 8.52" x 6.43"<br>(216.4mm x 163.4mm)   | 8.92" x 7.21"<br>(226.5mm x 183.0mm)  |                          | Length<br>3.15" (80.0mm)                           |
| <b>FTAS00-121A4</b>         | 12.1                  | 9.72" x 7.30"<br>(246.76mm x 185.32mm) | 10.04" x 7.53"<br>(255.0mm x 191.32mm) | 10.67" x 8.07"<br>(271.0mm x 205.0mm) |                          | Length<br>3.15" (80.0mm)                           |
| <b>FTAS00-121AS4</b>        | 12.1                  | 9.69" x 7.26"<br>(246.0mm x 184.5mm)   | 9.84" x 7.42"<br>(250.0mm x 188.5mm)   | 10.28" x 7.80"<br>(261.0mm x 198.0mm) |                          | Length<br>3.15" (80.0mm)                           |
| <b>FTAS00-150A4</b>         | 15.0                  | 12.05" x 9.06"<br>(306.1mm x 230.1mm)  | 12.21" x 9.25"<br>(310.0mm x 235.0mm)  | 12.91" x 9.84"<br>(328.0mm x 250.0mm) | Length<br>3.15" (80.0mm) |  |

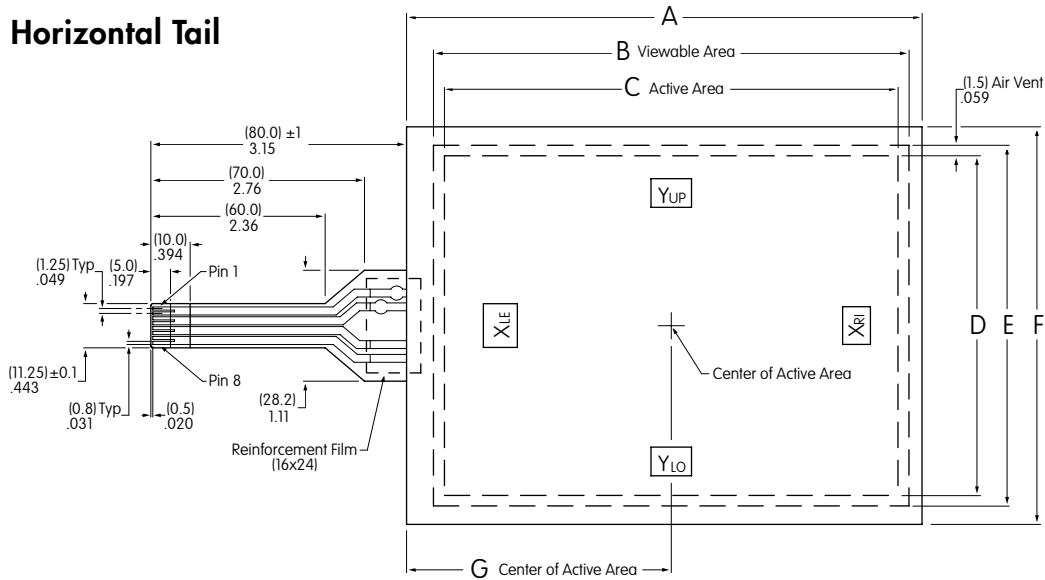
Note: Input methods are finger or stylus.

\* 4 pin available with 1.0mm or 1.25mm pitch. Contact factory for details.

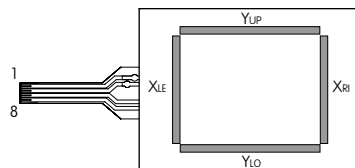
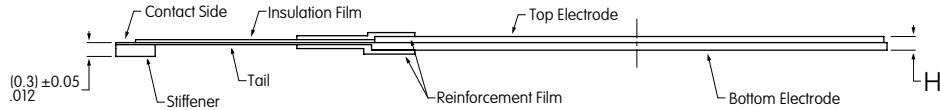
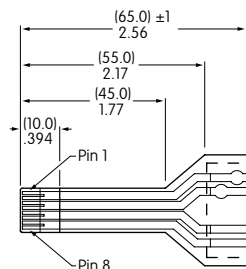
Supplement Accessories Indicators Touch Tilt Tacitiles Slides Rotaries Keylocks Programmable Illuminated PB Pushbuttons Rockers Toggles



**4-Wire with Horizontal Tail**



Tail Dimensions for FTAS00-57AS4 FTAS00-65AS4



XLE, XRI: Top Electrode Terminal  
YUP, YLO: Bottom Electrode Terminal

| Pins | Signal          |
|------|-----------------|
| 1,2  | Y <sub>UP</sub> |
| 3,4  | Y <sub>LO</sub> |
| 5,6  | X <sub>LE</sub> |
| 7,8  | X <sub>RI</sub> |

**4-Wire Analog Touch Screen Dimensions**

| Part Number          | Screen Size in Inches | Dim A                  | Dim B Viewable Area | Dim C Active Area   | Dim D              | Dim E Viewable Area | Dim F Active Area      | Dim G Center of Active Area | Dim H            |
|----------------------|-----------------------|------------------------|---------------------|---------------------|--------------------|---------------------|------------------------|-----------------------------|------------------|
| <b>FTAS00-57AS4</b>  | 5.7                   | 5.16"<br>(131±0.3mm)   | 4.76"<br>(121mm)    | 4.54"<br>(115.2mm)  | 3.40"<br>(86.4mm)  | 3.61"<br>(91.6mm)   | 3.98"<br>(101±0.3mm)   | 2.65"<br>(67.25mm)          | .055"<br>(1.4mm) |
| <b>FTAS00-65AS4</b>  | 6.5                   | 5.91"<br>(150±0.3mm)   | 5.43"<br>(138mm)    | 5.20"<br>(132mm)    | 3.90"<br>(99mm)    | 4.13"<br>(105mm)    | 4.57"<br>(116±0.3mm)   | 3.03"<br>(77mm)             | .055"<br>(1.4mm) |
| <b>FTAS00-84AS4</b>  | 8.4                   | 7.34"<br>(186.5±0.3mm) | 6.95"<br>(176.5mm)  | 6.73"<br>(170.9mm)  | 5.10"<br>(129.6mm) | 5.33"<br>(135.4mm)  | 5.69"<br>(144.4±0.3mm) | 3.73"<br>(94.85mm)          | .083"<br>(2.1mm) |
| <b>FTAS00-104AS4</b> | 10.4                  | 8.88"<br>(225.6±0.3mm) | 8.46"<br>(215mm)    | 8.31"<br>(211.2mm)  | 6.24"<br>(158.4mm) | 6.39"<br>(162.4mm)  | 6.75"<br>(171.4±0.3mm) | 4.49"<br>(114.1mm)          | .083"<br>(2.1mm) |
| <b>FTAS00-121AS4</b> | 12.1                  | 10.28"<br>(261±0.3mm)  | 9.84"<br>(250mm)    | 9.69"<br>(246mm)    | 7.26"<br>(184.5mm) | 7.42"<br>(188.5mm)  | 7.80"<br>(198±0.3mm)   | 5.18"<br>(131.6mm)          | .083"<br>(2.1mm) |
| <b>FTAS00-150A4</b>  | 15.0                  | 12.91"<br>(328±0.3mm)  | 12.20"<br>(310mm)   | 12.05"<br>(306.1mm) | 9.06"<br>(230.1mm) | 9.25"<br>(235mm)    | 9.84"<br>(250±0.3mm)   | 6.52"<br>(165.6mm)          | .083"<br>(2.1mm) |

Toggle  
Rocker  
Pushbutton  
Illuminated PB  
Programmable  
Keylocks  
Rotaries  
Slides  
Tactiles  
Tilt  
Touch  
Indicators  
Accessories  
Supplement

Toggles

Rockers

Pushbuttons

Illuminated PB

Programmable

Keylocks

Rotaries

Slides

Tactiles

Tilt

Touch

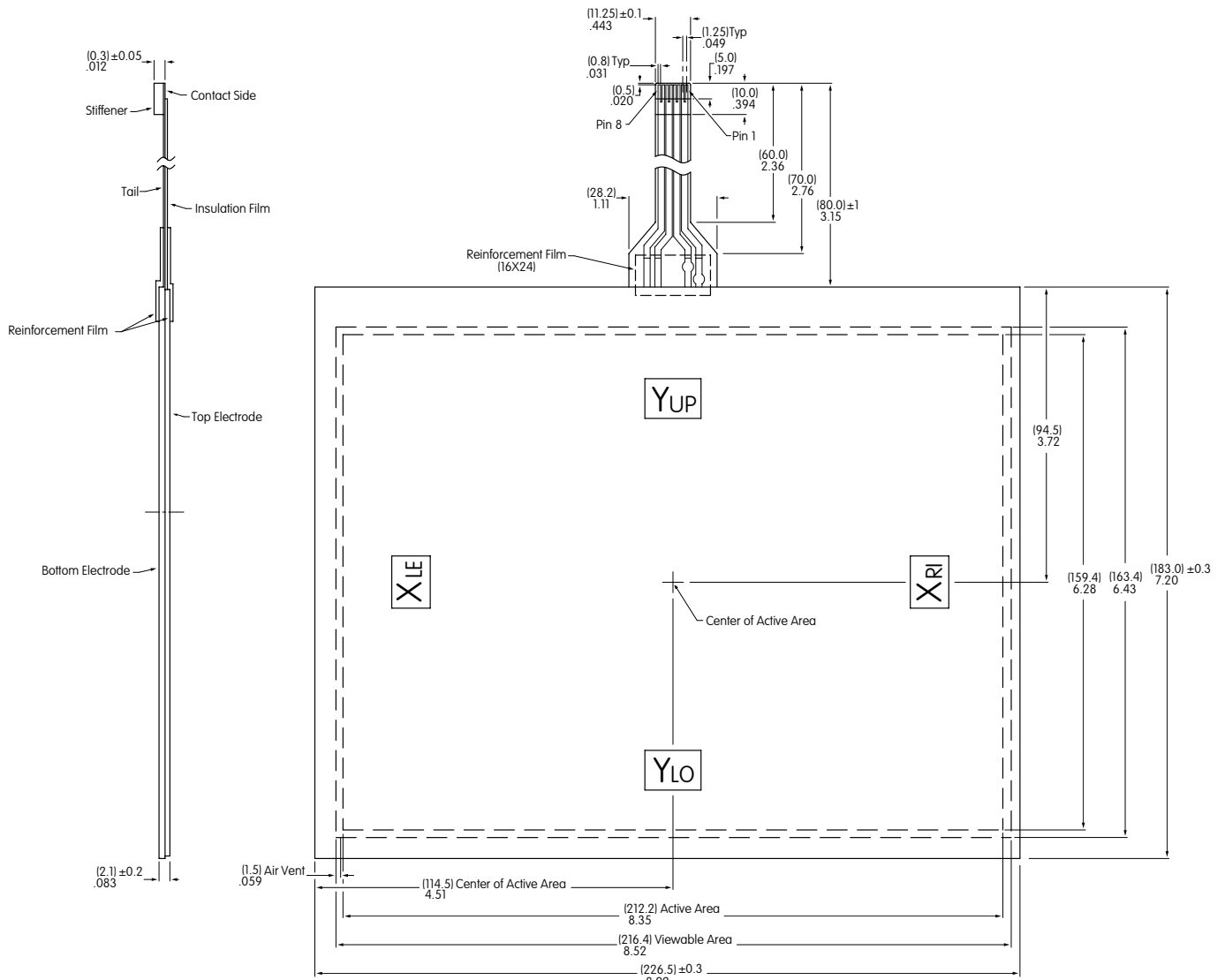
Indicators

Accessories

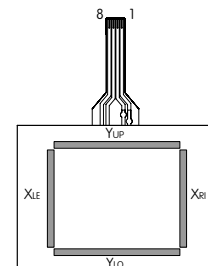
Supplement

## 4-Wire with Vertical Tail

FTAS00-104AV4



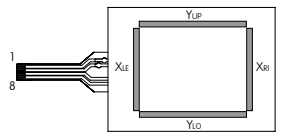
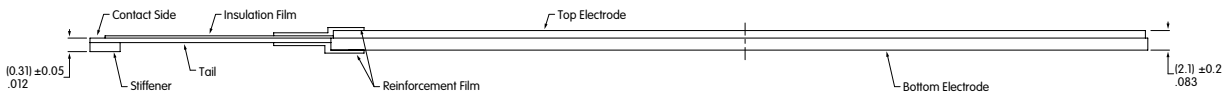
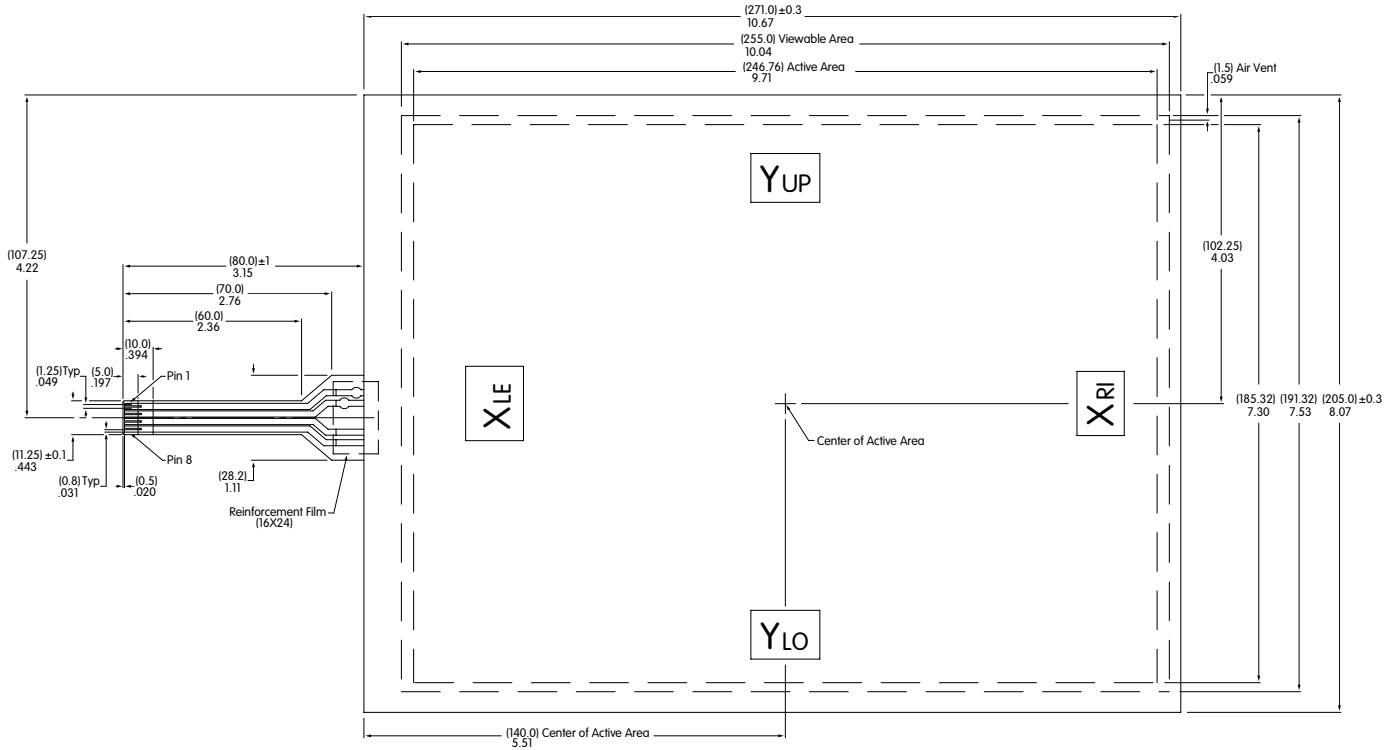
| Pins | Signal          |
|------|-----------------|
| 1,2  | Y <sub>UP</sub> |
| 3,4  | Y <sub>LO</sub> |
| 5,6  | X <sub>RI</sub> |
| 7,8  | X <sub>LE</sub> |



X<sub>LE</sub>, X<sub>RI</sub>: Top Electrode Terminal  
Y<sub>UP</sub>, Y<sub>LO</sub>: Bottom Electrode Terminal

**4-Wire with Horizontal Tail (Off-Center)**

**FTAS00-121A4**



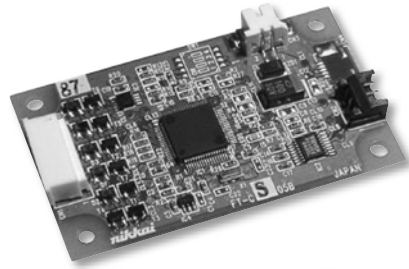
XLE, XRI: Top Electrode Terminal  
YUP, YLO: Bottom Electrode Terminal

| Pins | Signal          |
|------|-----------------|
| 1,2  | Y <sub>UP</sub> |
| 3,4  | Y <sub>LO</sub> |
| 5,6  | X <sub>LE</sub> |
| 7,8  | X <sub>RI</sub> |

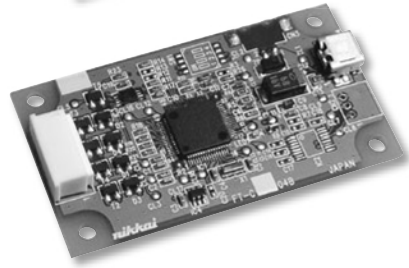
## 4-Wire Touch Screen Controller Boards & Drivers

### DISTINCTIVE CHARACTERISTICS

- High Quality and Reliability
- Easy Integration Replacing Mouse Functionality
- Compatible with Control Board USB/RS232C
- Device Driver Compatible with Vista and Windows XP Operating Systems



**Controller Boards Available for RS232C**



**Controller Boards Available for USB**

NKK offers controller boards compatible with USB or with RS232C. See web site or contact factory for specifications and technical data.

| Controller Boards |                |                        |
|-------------------|----------------|------------------------|
| Type              | Part No.       | Communication Protocol |
| 4-Wire            | <b>FTCS04B</b> | RS232C                 |
| 4-Wire            | <b>FTCU04B</b> | USB                    |

See web site for dimensioned drawings or technical data for any of the controller boards and drivers.

## IC & Accessories

### DISTINCTIVE CHARACTERISTICS

- Interface: USB and RS232C
- High Speed and Accuracy
- Built-in Calibration Function
- Data Function Removal Built In to Eliminate Noise



**IC FTCSU564**

The IC is for use with the 5- and 4-wire transparent touch screens, and is available for those who prefer to design their own controller boards. When the screen is touched, it recognizes the position of the touch by the level of analog voltage detected by the A/D. The A/D converter receives the value and sends a set of coordinate values as serial data or USB.

See web site or contact factory for IC specifications.

### OPTIONAL ACCESSORIES

#### AT713 Receptacle Connector

This Receptacle Connector with code connects to RS232C communication of the controller boards. It is compatible with FTCS04A and FTCS04A2.



#### AT714 Receptacle Connector

AT714 is a Receptacle Connector with code to connect to power source of the control boards.



For more details and dimensioned drawings of the accessories, go to the web site or call our engineering support personnel.

Toggles  
 Rockers  
 Pushbuttons  
 Illuminated PB  
 Programmable  
 Keylocks  
 Rotaries  
 Slides  
 Tactiles  
 Tilt  
 Touch  
 Indicators  
 Accessories  
 Supplement

## Storage, Handling & Installation

Below are some general precautions for the 5-wire & 4-wire touch screen devices. Please check web site for complete documentation.

### Installation (4-wire, 5-wire)

- Do not pull on the tail. Do not apply stress to the tail area.
- Avoid vibration or shock.
- The touch screen mounting should not be loose.
- Ensure there are no burrs around the edges of the case or housing that can cause false actuation. The edges of the case or housing should not enter the keying area.
- The case or housing and upper electrode should have a space of about 0.5 mm to accommodate expansion or shrinkage due to humidity variances. If a shock barrier is used do not press hard on the upper electrode area. Any shock barrier should be installed more than 0.6 mm above the screen.
- To secure the touch screen, secure the lower portion with an item such as the LCD display panel. Do not secure the upper electrode with double-sided tape or similar items to avoid stress that can damage the upper or lower electrode.
- In order to balance upper and lower pressure, an air vent may be installed. Ensure that no liquid or oil will enter into the device.

### Handling Precautions (4-wire, 5-wire)

- When opening product, take precaution with up/down and front/back directions. Glass edges are not chamfered, corners or edges can be sharp. Wear gloves when handling the product.
- Do not pick up the product by the tail or pull the tail area.
- Use gloves or finger cots to prevent fingerprints on surface.
- When handling the product, hold it outside of the viewing area.
- Avoid stacking multiple products or placing other items on the product.
- Remove protective film after installation is completed.

### Operating Precautions (4-wire, 5-wire)

- Only operate with fingers or a touch screen stylus.
- Do not press hard with pen or similar objects between viewing area and key area.

### Design Precautions (4-wire, 5-wire)

- With analog type, resistive value change can dislocate the input area. Input area can be calibrated with software.
- When installing on top of a LCD, noise from the display device can create misoperation. To avoid noise, implement actions such as grounding the display device frame.
- Do not create software for simultaneous touch points as analog type will read the center point between two touch points.
- When used to draw a line, analog type will have a break at dot spacer. Compensate for this with software.

### Other Precautions (4-wire, 5-wire)

- Clean with a soft cloth and ethanol. Do not use any cleaning agents other than ethanol.
- Store product in original package and store at the temperature and humidity range specified.
- Do not store in an environment with acids or other corrosive gases or dew.
- Not suited for use in critical control systems such as nuclear power, aerospace, medical or transportation equipment, without proper failsafe design consideration.

### Handling Precautions (5-wire)

- NKK warranties the 5-wire touch panel when it is used with the NKK control board and driver. Do not use third party control boards.
- 5-wire devices can misalign cathode position or touch position even after calibration. See web site for details.
- Create a larger input area. If you have the input button at the edge of a screen, it might not operate properly.
- Complete 9 point calibration with NKK driver. If more precision is desired, 25 point calibration is recommended.

### Handling of Controller Board (5-wire)

- Warranty for one year after delivery. We do not warranty the controller board unless used with NKK touch panel.
- Use arc prevention to protect device from static electricity.
- Power source should be activated after host and touch panel are connected.
- When inserting connector CN1 and touch panel tail, be sure the slider of connector CN1 is pulled. Do not pull more than 10 times.
- Do not alter the product.
- Do not use any commands other than the ones specified in specifications.
- Place the product away from noise source (such as inverter from LCD operation) since tail can be affected by noise.
- If device driver (USB) does not work after installation, reboot the host computer while connected to the controller board.
- This product does not support suspended mode (USB).
- Protocol of USB transmission is one frame per one transaction.
- Contact factory if not using protocol above.

Toggle

Rockers

Pushbuttons

Programmable Illuminated PB

Keylocks

Rotaries

Slides

Tactiles

Tilt

Touch

Indicators

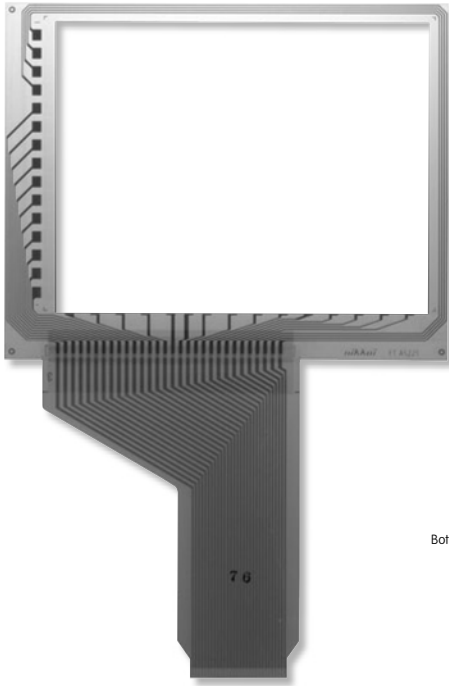
Accessories

Supplement

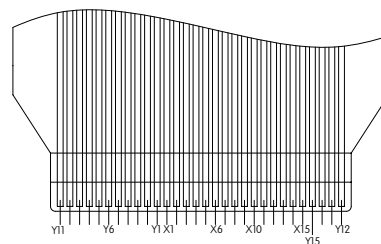
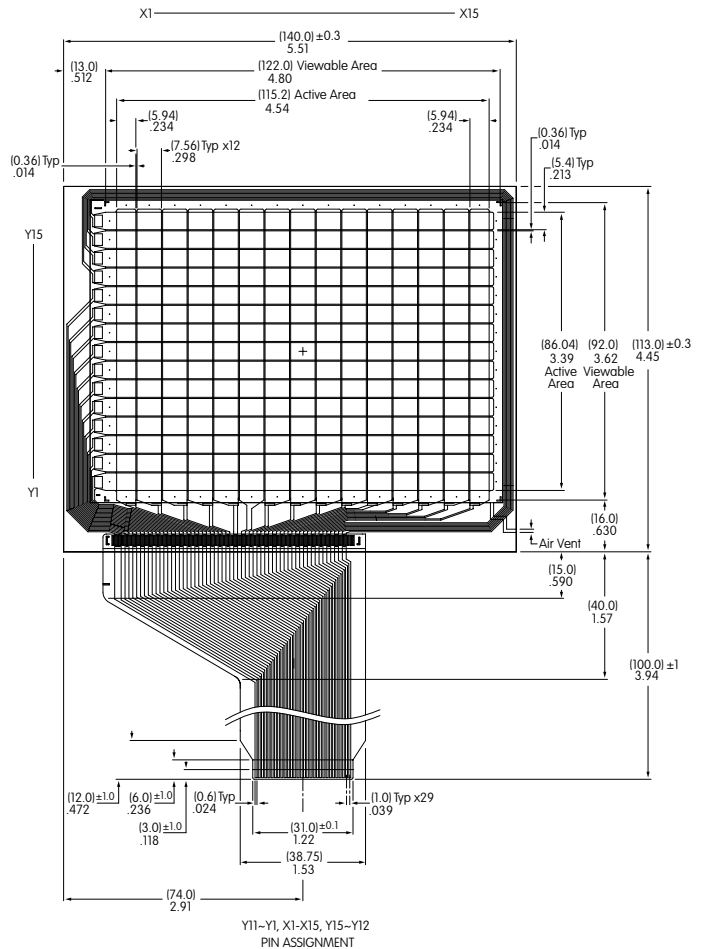
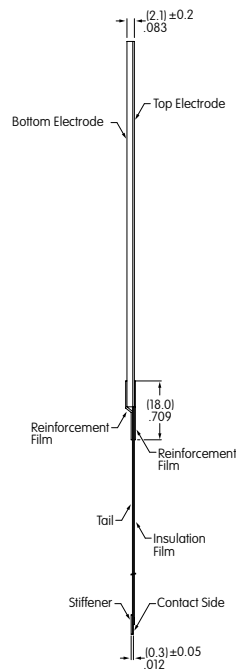
## Digital Touch Screen

| Part Number         | Screen Size in Inches | Key Area Dimensions                  | Viewing Area Dimensions             | External Dimensions                  | Panel Thickness  | Terminal Detail<br>30 Pin<br>.039" (1.0mm) Pitch |
|---------------------|-----------------------|--------------------------------------|-------------------------------------|--------------------------------------|------------------|--|
| <b>FTAS225-57AN</b> | 5.7                   | 4.54" x 3.39"<br>(115.2mm x 86.04mm) | 4.80" x 3.62"<br>(122.0mm x 92.0mm) | 5.51" x 4.45"<br>(140.0mm x 113.0mm) | .083"<br>(2.1mm) | Length<br>3.94" (100.0mm)                        |

Notes: Input method is finger. Number of keys for Digital Touch Screen: 15 x 15. See web site for dimensioned drawings for the Digital Touch Screen.



**Digital  
FTAS225-57AN**



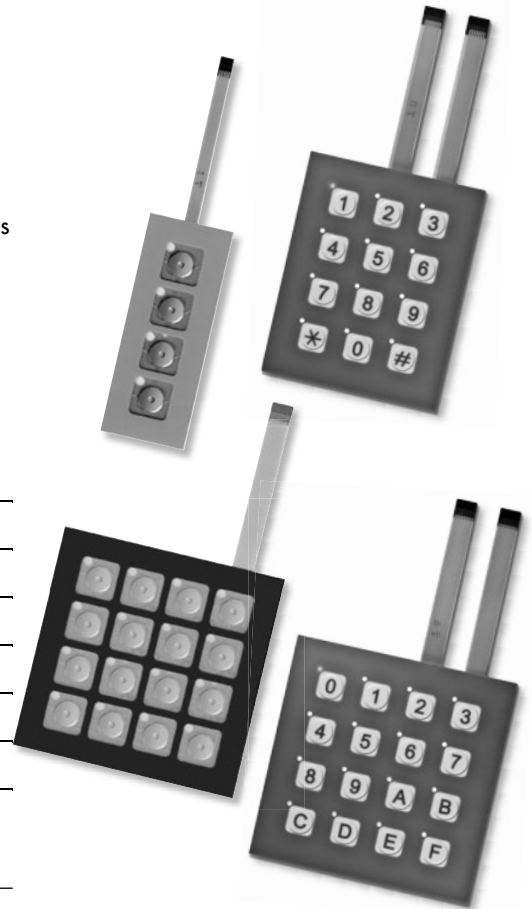
Y11-Y1, X1-X15, Y15-Y12  
PIN ASSIGNMENT

**DISTINCTIVE CHARACTERISTICS**

- Nonilluminated options in 4 or 16 keys, illuminated choices in 12 or 16 keys
- 1.0mm (.039") tail pitch
- Easily integrated into designs: replaces multiple mechanical switches, soldered wires and cable assemblies
- Card insertion into design supports customized legends for nonilluminated models
- Actuating dome offers crisp, tactile feedback to positively indicate circuit transfer
- Illuminated models feature legends on embossed keypads
- Adhesive backing for easy mounting

**GENERAL SPECIFICATIONS**

|                             |   |
|-----------------------------|---|
| Power Level                 | 20mA @ 24V DC   |
| Contact Resistance          | 500Ω maximum (10mA @ 10V DC)  |
| Insulation Resistance       | 100 megohms minimum @ 250V DC minimum   |
| Dielectric Strength         | 250V AC minimum for one minute minimum  |
| Operational Life            | 1,000,000 operations minimum  |
| Contact Timing              | 10 milliseconds maximum   |
| Nominal Operating Force     | 1.0N ~ 6.0N   |
| Stroke:                     |   |
| Nonilluminated              | .016" ~ .039" (0.4mm ~ 1.0mm)   |
| Illuminated with Overlay    | .020" ~ .047" (0.5mm ~ 1.2mm)   |
| Operating Temperature Range | -15°C ~ +50°C (+5°F ~ +122°F) illuminated<br>-15°C ~ +55°C (+5°F ~ +131°F) nonilluminated |

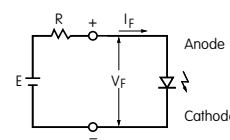


Toggles  
Rockers  
Pushbuttons  
Illuminated PB  
Programmable  
Keylocks  
Rotaries  
Slides

**LED SPECIFICATIONS**

|                                 |                 |      |    |
|---------------------------------|-----------------|------|----|
| Single Element LED Color: Amber |                 | Unit |    |
| Forward Voltage (Typical)       | V <sub>F</sub>  | 2.1  | V  |
| Forward Current (Typical)       | I <sub>F</sub>  | 20   | mA |
| Forward Current (Maximum)       | I <sub>F</sub>  | 30   | mA |
| * Forward Peak Current (Max)    | I <sub>FM</sub> | 195  | mA |
| Reverse Voltage (Maximum)       | V <sub>R</sub>  | 5.0  | V  |

The electrical specifications shown are determined at a basic temperature of 25°C. LED is an integral part of the switch. LEDs are not sold separately.



$$R = \frac{E - V_F}{I_F}$$

Where: R = Resistor Value (Ohms)  
E = Source Voltage (V)  
V<sub>F</sub> = Forward Voltage (V)  
I<sub>F</sub> = Forward Current (A)

LED circuits are isolated and require an external power source. If the source voltage exceeds the rated voltage, a ballast resistor is required.

\* Note: Pulse width 0.1 msec maximum with a maximum duty cycle ratio of 1/10

**Ordering Information**

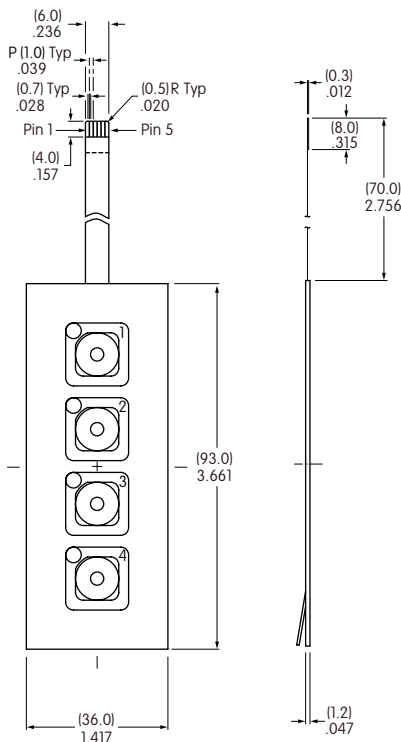
**Description**

| Part Number | Illumination                 | Number of Keys | Surface Sheet |          | Overlay  |
|-------------|------------------------------|----------------|---------------|----------|--|
|             |                              |                | Black (D)     | Gray (E) |  |
| FMBN04BD    | Nonilluminated               | 4              | •             |          |  |
| FMBN04BE    |                              | 4              |               | •        |  |
| FMBN16BD    |                              | 16             | •             |          |  |
| FMBN16BE    |                              | 16             |               | •        |  |
| FMBP12BF    | Dot Illuminated with Overlay | 12             |               |          | Gray Surface Sheet with Embossed White Keypad and Gray Legends |
| FMBP16BF    |                              | 16             |               |          |  |

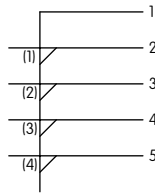
Tactiles  
Tilt  
Touch  
Indicators  
Accessories  
Supplement

## TYPICAL SWITCH DIMENSIONS

### Nonilluminated • 4 or 16 Keys

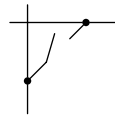


**Switch Circuit Matrix For 4 Key**

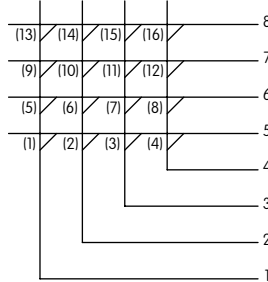


Key numbers in parenthesis are not actually on panel and are for reference only

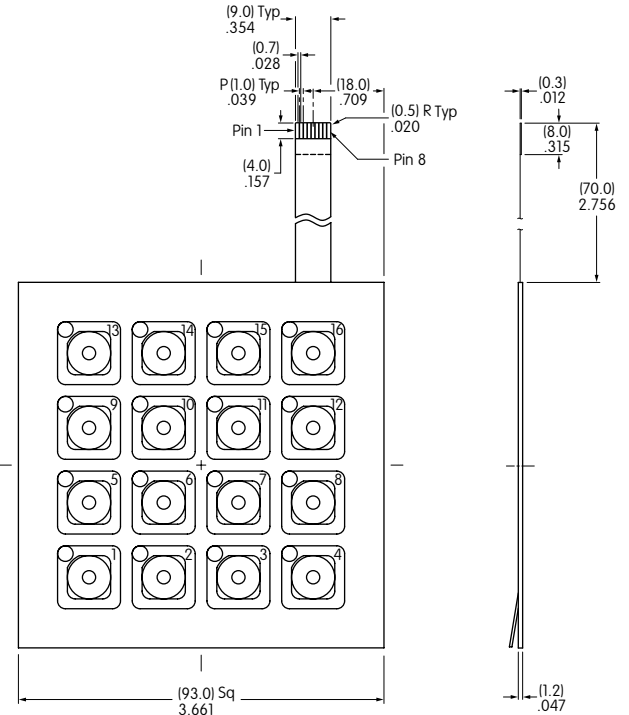
**Switch Circuit Matrix Detail For 4 or 16 Key**



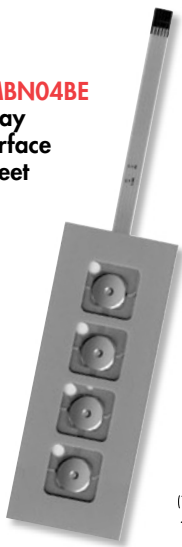
**Switch Circuit Matrix For 16 Key**



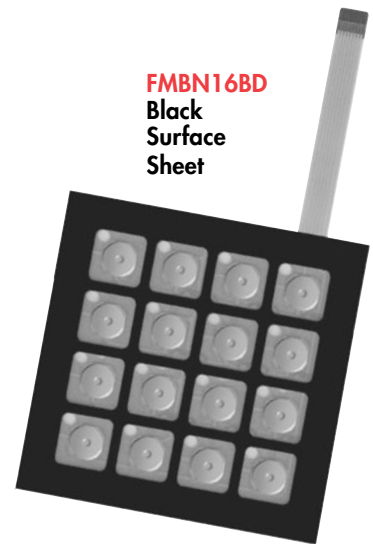
Key numbers in parenthesis are not actually on panel and are for reference only



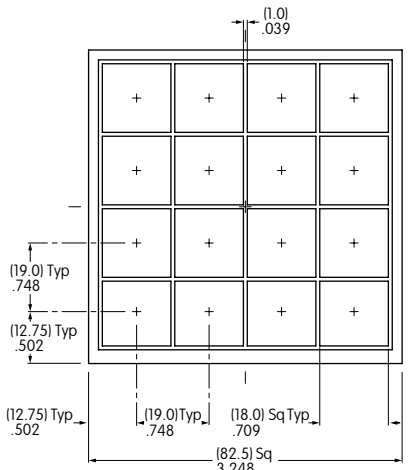
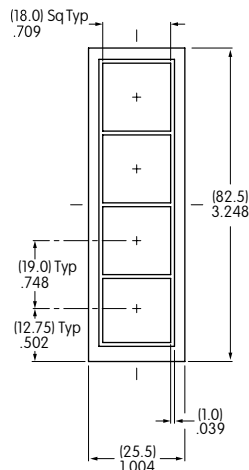
**FMBN04BE**  
Gray  
Surface  
Sheet



**FMBN16BD**  
Black  
Surface  
Sheet



### Insertable Legend Card for 4 Key or 16 Key



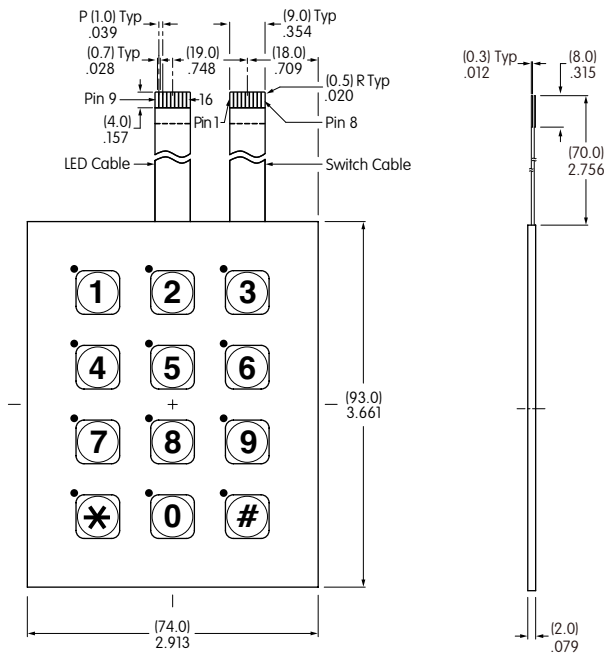
Insertable Legend Cards are supplied with the nonilluminated keypad assembly in Black, Gray and Yellow

Toggles  
Rocker  
Pushbuttons  
Illuminated PB  
Programmable  
Keylocks  
Rotaries  
Slides  
Tactiles  
Tilt  
Touch  
Indicators  
Accessories  
Supplement

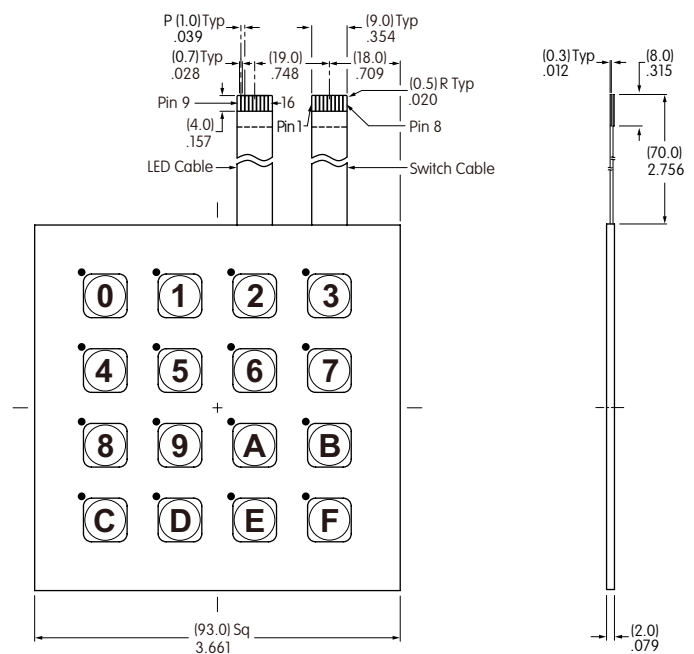


**TYPICAL SWITCH DIMENSIONS**

**Illuminated • 12 or 16 Keys**

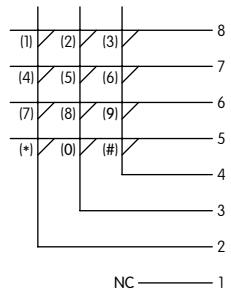


Dot illumination at upper left corner of each keypad

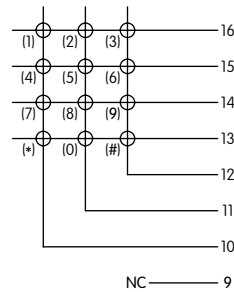


Dot illumination at upper left corner of each keypad

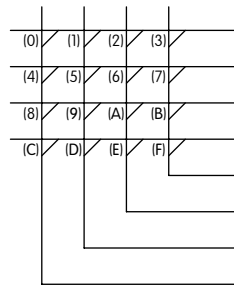
**Switch Circuit Matrix For 12 Key**



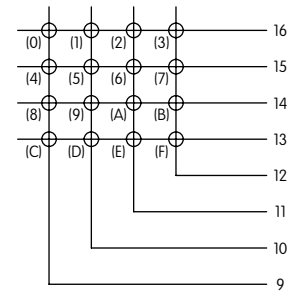
**LED Circuit Matrix For 12 Key**



**Switch Circuit Matrix For 16 Key**



**LED Circuit Matrix For 16 Key**

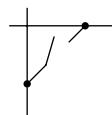


Key numbers in parenthesis are not actually on panel and are for reference only

**FMBP12BF**



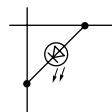
**Switch Circuit Matrix Detail For 12 or 16 Key**



**FMBP16BF**



**LED Circuit Matrix Detail For 12 or 16 Key**



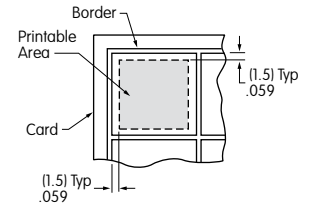
Toggles  
Rockers  
Pushbuttons  
Illuminated PB  
Programmable  
Keylocks  
Rotaries  
Slides  
Tactiles  
Tilt  
Touch  
Indicators  
Accessories  
Supplement

## INSERTABLE LEGEND CARDS

### Instructions for Customizing Insertable Legends

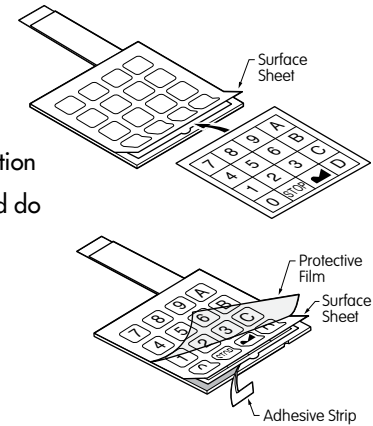
The membrane keypad assembly comes with three insertable legend cards: yellow, gray and black. The following provides guidelines for creating and insertion of legend cards for the membrane switch keypad assembly. Read all of the instructions prior to customizing and inserting the legend card.

- Using the borders on the insertable legend card as a guide, be sure characters on the card are about 1.5mm (.059") within these borders. This is the printable area.
- Legend characters may be drawn, printed, etc. Be sure that application choice is completely dry before inserting into membrane keypad assembly.



### Instructions for Inserting Legend Card

- Note correct orientation of insertable legend card. Insert card under surface sheet, and use caution to avoid bending the membrane keypad assembly. Do not use pointed object to insert card, and do not remove surface sheet.
- Align and center all legend characters within the squares of the surface sheet.
- Smooth any wrinkles or air pockets from surface sheet.
- Peel off adhesive strip from the membrane keypad assembly.
- The legend card is now firmly in place and cannot be removed.
- Detach the protective film.



## Connectors

### Recommended Connectors for 5 Pin

Straight: FCI Part No. SLW5S-5C7LF  
Right Angle: FCI Part No. SLW5R-5C7LF

### Recommended Connectors for 8 Pin

Straight: FCI Part No. SLW8S-5C7LF  
Right Angle: FCI Part No. SLW8R-5C7LF

## PRECAUTIONS FOR HANDLING

- Assembly of legend card insert is handled by the customer. Therefore, we recommend to evaluate the finished product with the card assembled.
- Nonilluminated products have a loophole on each key. It is possible to add optional illumination by installing appropriate LEDs. Legend card does not have loopholes.
- To test proper electrical operation of switches, use of an electric buzzer is recommended.
- Use an additional chattering prevention circuit for the switch circuit.
- Do not operate switches with pointed objects (i.e. screwdrivers) to prevent perforation of film overlay.
- Use an FPC connector that corresponds to the printed circuit. Contact factory for suitable connectors.
- During assembly and installation of legends place devices on a level, sturdy surface. We do not recommend assembly and installation of device using a free hand or on a soft surface.
- Do not fold, bend, or apply pressure to the product.
- These devices contain adhesive that may emit noise. This does not affect product functionality.
- Do not depress any switch areas during assembly/installation.
- These membrane switches are built with air vents. Prior to installation, make corresponding holes to allow air vents to function. These holes should first be aligned with the membrane switch device, then made on the body of the final installation structure. Do not allow water or oil to penetrate through the air vents. Entry of any liquids through the air vents may cause contact failure.

## APPLICATIONS

- Communication equipment
- Office machines
- Electronic equipment for national security
- Automation equipment
- Electronic equipment
- Amusement equipment