



Chipsmall Limited consists of a professional team with an average of over 10 year of expertise in the distribution of electronic components. Based in Hongkong, we have already established firm and mutual-benefit business relationships with customers from,Europe,America and south Asia,supplying obsolete and hard-to-find components to meet their specific needs.

With the principle of “Quality Parts,Customers Priority,Honest Operation,and Considerate Service”,our business mainly focus on the distribution of electronic components. Line cards we deal with include Microchip,ALPS,ROHM,Xilinx,Pulse,ON,Everlight and Freescale. Main products comprise IC,Modules,Potentiometer,IC Socket,Relay,Connector.Our parts cover such applications as commercial,industrial, and automotives areas.

We are looking forward to setting up business relationship with you and hope to provide you with the best service and solution. Let us make a better world for our industry!



Contact us

Tel: +86-755-8981 8866 Fax: +86-755-8427 6832

Email & Skype: info@chipsmall.com Web: www.chipsmall.com

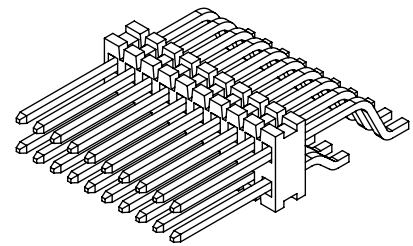
Address: A1208, Overseas Decoration Building, #122 Zhenhua RD., Futian, Shenzhen, China



REVISION X

NOTES:

1. $\text{\textcircled{C}}$ REPRESENTS A CRITICAL DIMENSION.
2. SHEAR TAILS TO DIMENSION SHOWN.
3. MAXIMUM BURR: .003[0.08].
4. MAXIMUM CUT FLASH: .015 [0.38].
5. NO FLASH ALLOWED IN OR AROUND SURFACE MOUNT TAIL AREA.
6. MINIMUM PUSHOUT FORCE: .5 LB.
7. MINIMUM ENDWALL THICKNESS: .008 [0.20].



FTE-1XX-XX-X-DH-X-XX

No OF POSITIONS
-05 THRU -50
(PER ROW)

LEAD STYLE
-01: .075 POST
-02: .175 POST
-03: .120 POST

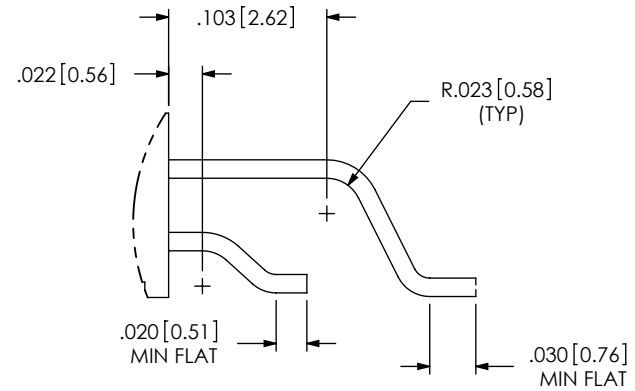
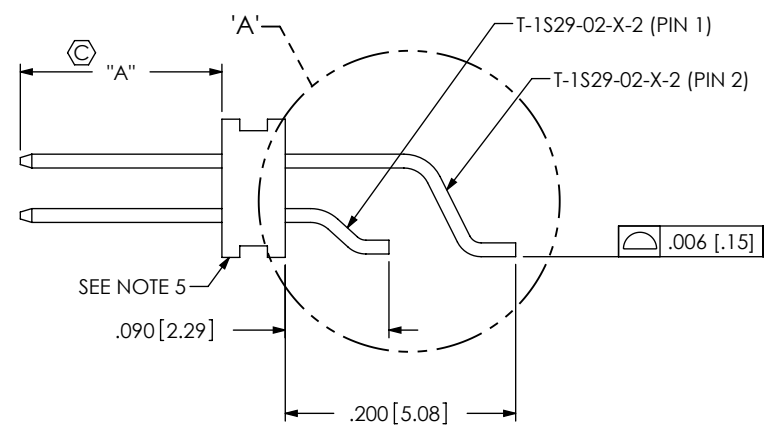
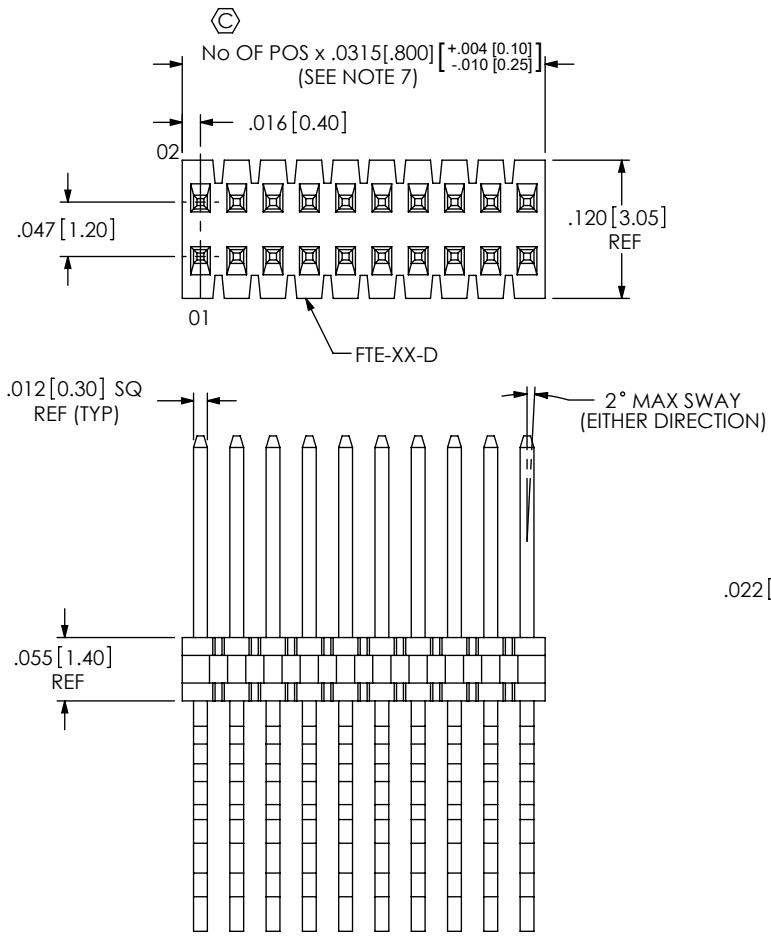
OPTION 2
-TR: TAPE & REEL PACKING
(SEE FIG 3, SHEET 2)

OPTION 1
-K: POLYIMIDE FILM PAD
(USE K-500-300,
SEE FIG 4, SHEET 2)

ROW SPECIFICATION
-DH: DOUBLE HORIZONTAL
(USE FTE-90-D)

PLATING SPECIFICATION
-G: 10 μ " SELECTIVE GOLD IN CONTACT AREA,
3 μ " SELECTIVE GOLD ON TAIL.

DO NOT SCALE FROM THIS PRINT



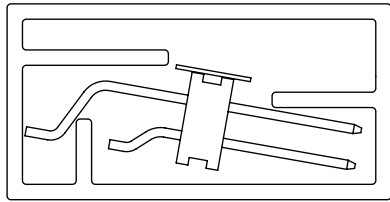
LEAD STYLE	"A"
-01	.075[1.91]
-02	.175[4.45]
-03	.120 [3.05]

FIG 1
FTE-110-02-X-DH SHOWN

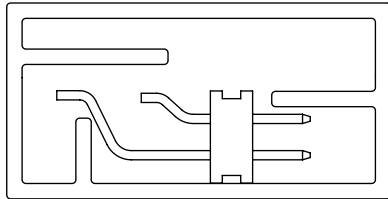
DETAIL 'A'
SCALE 8:1

<p>UNLESS OTHERWISE SPECIFIED, DIMENSIONS ARE IN INCHES. TOLERANCES ARE:</p> <p>DECIMALS ANGLES</p> <p>.XX: $\pm .01$ [0.3] 2°</p> <p>.XXX: $\pm .005$ [0.13]</p> <p>.XXXX: $\pm .0020$ [0.051]</p>	<p>PROPRIETARY NOTE</p> <p>THIS DOCUMENT CONTAINS INFORMATION CONFIDENTIAL AND PROPRIETARY TO SAMTEC, INC. AND SHALL NOT BE REPRODUCED OR TRANSFERRED TO OTHER DOCUMENTS OR DISCLOSED TO OTHERS OR USED FOR ANY PURPOSE OTHER THAN THAT WHICH IT WAS OBTAINED WITHOUT THE EXPRESSED WRITTEN CONSENT OF SAMTEC, INC.</p>		
		<p>520 PARK EAST BLVD., NEW ALBANY, IN 47150 PHONE: 812-944-6733 FAX: 812-948-5047 e-Mail: info@SAMTEC.com code 53322</p>	
<p>MATERIAL: DO NOT SCALE DRAWING SHEET SCALE: 3:1</p> <p>BODY: LCP, UL 94 V0, COLOR: BLACK TERMINAL: PHOS BRONZE</p>	<p>DESCRIPTION: .8MM X 1.2MM C.L. TERMINAL STRIP ASSM</p>	<p>DWG. NO. FTE-1XX-XX-X-DH-X-XX</p>	<p>BY: D. PURVIS 10/13/1998 SHEET 1 OF 2</p>

REVISION X

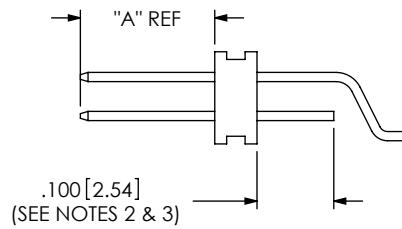


OPTIONS: -02, -03, -02-K, -03-K

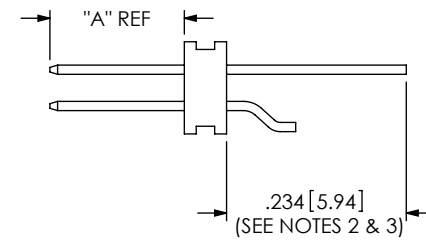


OPTIONS: -01, -01-K

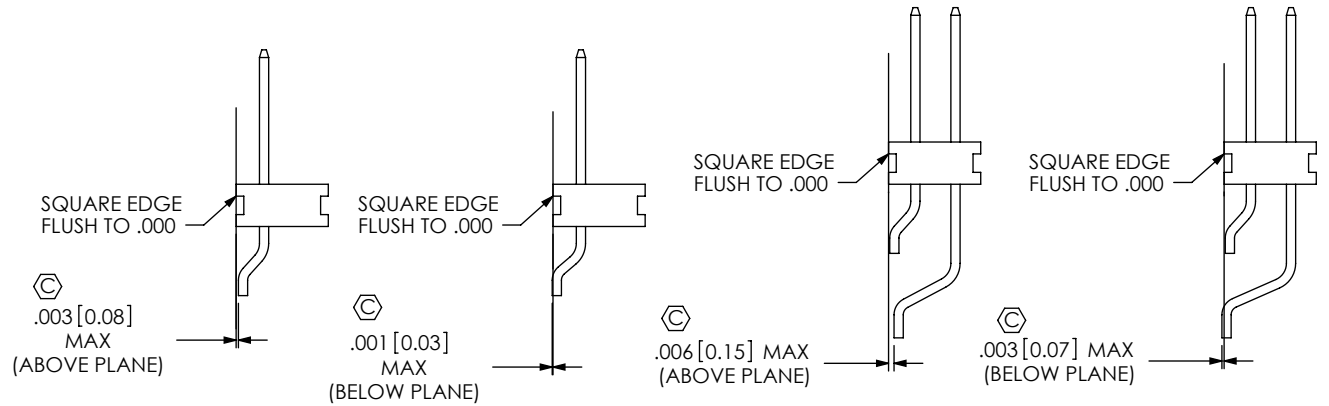
FIG 2
TUBE: PT-1-24-01-92
PLUG: TP-24



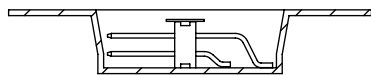
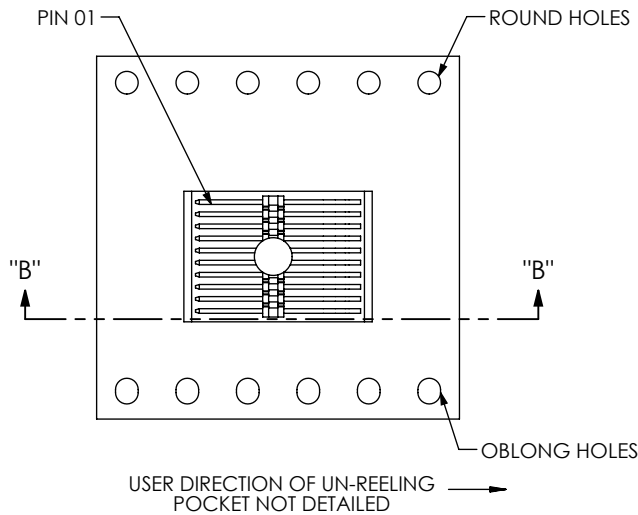
IN PROCESS 1



IN PROCESS 2



COPLANARITY VIEWS



SECTION "B"-"B"
SCALE 2:1

FIG 3
TAPE & REEL

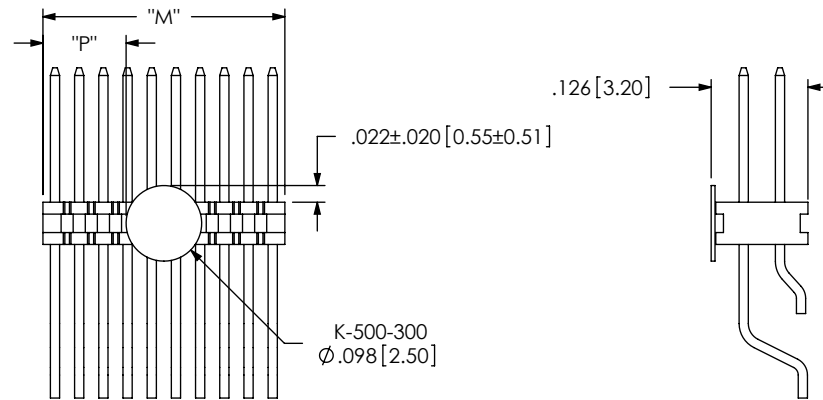
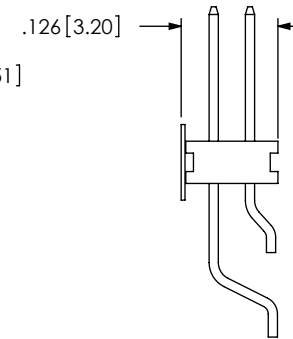


FIG 4
POLYIMIDE FILM PAD
(AVAILABLE ON -05 THRU -50 POS ONLY)



NOTE: "M" = USE MEASURED DIMENSION REF
"P" = ((M" - .098[2.50])/2) ±.020[0.51]

PROPRIETARY NOTE
THIS DOCUMENT CONTAINS INFORMATION
CONFIDENTIAL AND PROPRIETARY TO
SAMTEC, INC. AND SHALL NOT BE REPRODUCED
OR TRANSFERRED TO OTHER DOCUMENTS OR
DISCLOSED TO OTHERS OR USED FOR ANY
PURPOSE OTHER THAN THAT WHICH IT WAS
OBTAINED WITHOUT THE EXPRESSED WRITTEN
CONSENT OF SAMTEC, INC.

DO NOT SCALE DRAWING

SHEET SCALE: 4:1

samtec

520 PARK EAST BLVD, NEW ALBANY, IN 47150
PHONE: 812-944-6733 FAX: 812-948-5047
e-Mail info@SAMTEC.com code 55322

DESCRIPTION: .8MM X 1.2MM C.L. TERMINAL STRIP ASSM

DWG. NO. FTE-1XX-XX-X-DH-X-XX

BY: D. PURVIS 10/13/1998 SHEET 2 OF 2