



Chipsmall Limited consists of a professional team with an average of over 10 year of expertise in the distribution of electronic components. Based in Hongkong, we have already established firm and mutual-benefit business relationships with customers from,Europe,America and south Asia,supplying obsolete and hard-to-find components to meet their specific needs.

With the principle of “Quality Parts,Customers Priority,Honest Operation,and Considerate Service”,our business mainly focus on the distribution of electronic components. Line cards we deal with include Microchip,ALPS,ROHM,Xilinx,Pulse,ON,Everlight and Freescale. Main products comprise IC,Modules,Potentiometer,IC Socket,Relay,Connector.Our parts cover such applications as commercial,industrial, and automotives areas.

We are looking forward to setting up business relationship with you and hope to provide you with the best service and solution. Let us make a better world for our industry!



Contact us

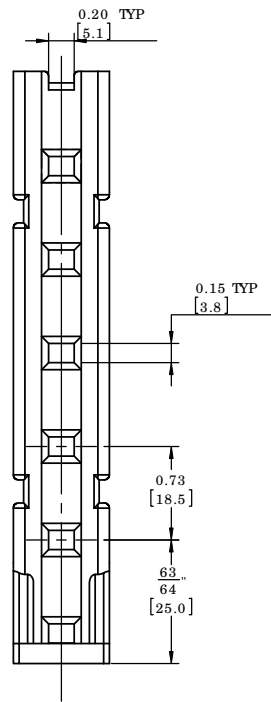
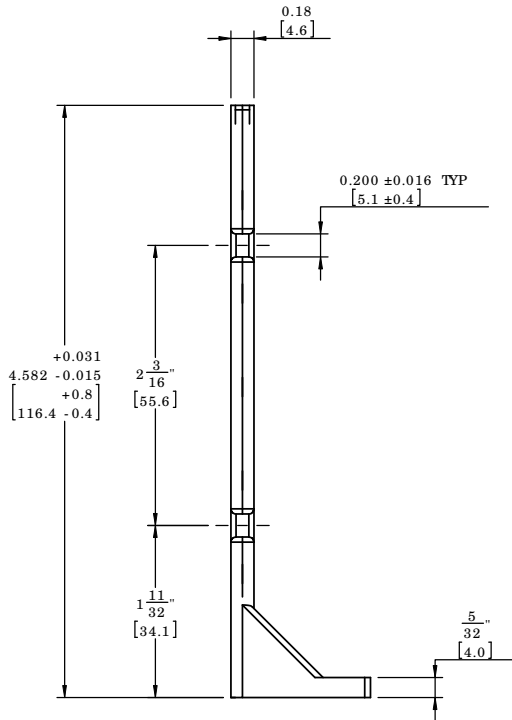
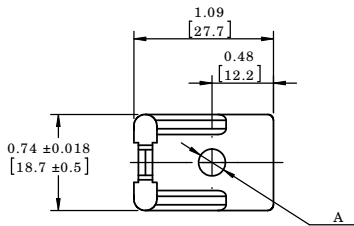
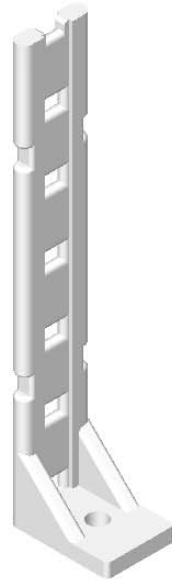
Tel: +86-755-8981 8866 Fax: +86-755-8427 6832

Email & Skype: info@chipsmall.com Web: www.chipsmall.com

Address: A1208, Overseas Decoration Building, #122 Zhenhua RD., Futian, Shenzhen, China



PART NUMBER	Diameter A
FTH-24-01	Ø0.21(Ø5.3) FOR #10 SCREW
FTH-24-1-01	Ø0.25(Ø6.4) FOR M6 AND 1/4" SCREW



NOTE:
 1.MATERIAL:NYLON 6/6 (RMS-01);
 2.COLOR:NATURAL;
 3.ALL MOUNTING SLOTS ACCOMMODATES
 WIT /WITA-18 THRU -50 TIES.

I	SEE CO 220061 FOR CHANGES	M.C. 09/08/10
H	SEE CO 220014 FOR CHANGES	M.C. 14/11/08
G	SEE CO 220002 FOR CHANGES	M.C. 28/05/08
---	SEE ENGINEERING FOR REV A-F	---
R E V	DESCRIPTION	ENGR. DATE

TITLE: **FLAT TIE HOLDER**



TOLERANCES UNLESS NOTED .XX=±.010 .XXX=±.005 FRAC.=±1/64 ANG.=±1°	FILE #: FTH-24	DWN: P.B	APP:	PART # SEE TABLE	PRINT TYPE CA
	MAT'L: SEE NOTES	DT: 05-25-95	CHKD: W.H		
	RE: RICHCO	RICHCO, XIAMEN RICHCO_XIAMEN@RICHCO.CN (+86) 0592-4884500			