



Chipsmall Limited consists of a professional team with an average of over 10 year of expertise in the distribution of electronic components. Based in Hongkong, we have already established firm and mutual-benefit business relationships with customers from,Europe,America and south Asia,supplying obsolete and hard-to-find components to meet their specific needs.

With the principle of “Quality Parts,Customers Priority,Honest Operation,and Considerate Service”,our business mainly focus on the distribution of electronic components. Line cards we deal with include Microchip,ALPS,ROHM,Xilinx,Pulse,ON,Everlight and Freescale. Main products comprise IC,Modules,Potentiometer,IC Socket,Relay,Connector.Our parts cover such applications as commercial,industrial, and automotives areas.

We are looking forward to setting up business relationship with you and hope to provide you with the best service and solution. Let us make a better world for our industry!



## Contact us

Tel: +86-755-8981 8866 Fax: +86-755-8427 6832

Email & Skype: info@chipsmall.com Web: www.chipsmall.com

Address: A1208, Overseas Decoration Building, #122 Zhenhua RD., Futian, Shenzhen, China



## Preliminary Product Specification

### Extended Temperature, 10Gb/s 80km TDM XFP Optical Transceiver

#### FTLX1812M3BTL

#### PRODUCT FEATURES

- Supports 8.5Gb/s to 11.3Gb/s bit rates
- Hot-pluggable XFP footprint
- Maximum link length of 80km
- RoHS-6 compliant (lead-free)
- Temperature-stabilized EML transmitter
- Duplex LC connector
- Power dissipation <3.5W
- Built-in digital diagnostic functions
- XFI Loop-back Support
- CDR bypass mode for <8Gb/s or legacy 8GFC XFP applications
- Temperature range: -40°C to 85°C



#### APPLICATIONS

- SONET OC-192 / SDH STM-64  
ITU-T G.959.1 P1L1-2D2
- IEEE 802.3ae 10GBASE-ZR/ZW  
80km 10G Ethernet
- Extended 80km, 10GFC 1200-SM-LL-L  
and 8GFC, 800-SM-LC-L
- Supports OTN/ITU-T G.709 FEC  
protocols OTU1e, OTU2, and OTU2e
- 10G CPRI

Finisar's 80km FTLX1812M3BTL Small Form Factor 10Gb/s (XFP) transceivers comply with the current XFP Multi-Source Agreement (MSA) Specification<sup>1</sup>. They are a true multi-protocol transceiver complying with 80km SONET OC-192 and SDH STM-64 per ITU-T G.959.1: P1L1-2D2, and also support 10GBASE-ZR/ZW 80km 10-Gigabit Ethernet, 10-Gigabit Fibre Channel 1200-SM-LL-L, and all ITU-T G.709 OTN/FEC (protocols up to 11.32Gb/s. The transceiver is also capable of supporting 8GFC, 800-SM-LC-L, with full compliance to the Tx & Rx electrical jitter specifications by adjusting a "rate select" bit through the I<sup>2</sup>C interface. Digital diagnostics functions are available via a 2-wire serial interface, as specified in the XFP MSA. The transceiver is RoHS compliant and lead free per Directive 2002/95/EC<sup>3</sup>, and Finisar Application Note AN-2038<sup>4</sup>.

#### PRODUCT SELECTION

**FTLX1812M3BTL**

**I. Pin Descriptions**

Pin	Logic	Symbol	Name/Description	Ref.
1		GND	Module Ground	1
2		VEE5	Optional –5.2 Power Supply – <b>Not required</b>	
3	LVTTL-I	Mod-Desel	Module De-select; When held low allows the module to respond to 2-wire serial interface commands	
4	LVTTL-O	$\overline{\text{Interrupt}}$	Interrupt (bar); Indicates presence of an important condition which can be read over the serial 2-wire interface	2
5	LVTTL-I	TX_DIS	Transmitter Disable; Transmitter laser source turned off	
6		VCC5	+5 Power Supply	
7		GND	Module Ground	1
8		VCC3	+3.3V Power Supply	
9		VCC3	+3.3V Power Supply	
10	LVTTL-I	SCL	Serial 2-wire interface clock	2
11	LVTTL-I/O	SDA	Serial 2-wire interface data line	2
12	LVTTL-O	Mod_Abs	Module Absent; Indicates module is not present. Grounded in the module.	2
13	LVTTL-O	Mod_NR	Module Not Ready; Finisar defines it as a logical OR between RX_LOS and Loss of Lock in TX/RX.	2
14	LVTTL-O	RX_LOS	Receiver Loss of Signal indicator	2
15		GND	Module Ground	1
16		GND	Module Ground	1
17	CML-O	RD-	Receiver inverted data output	
18	CML-O	RD+	Receiver non-inverted data output	
19		GND	Module Ground	1
20		VCC2	+1.8V Power Supply – <b>Not required</b>	
21	LVTTL-I	P_Down/RST	Power Down; When high, places the module in the low power stand-by mode and on the falling edge of P_Down initiates a module reset Reset; The falling edge initiates a complete reset of the module including the 2-wire serial interface, equivalent to a power cycle.	
22		VCC2	+1.8V Power Supply – <b>Not required</b>	
23		GND	Module Ground	1
24	PECL-I	RefCLK+	Reference Clock non-inverted input, AC coupled on the host board – <b>Not required</b>	
25	PECL-I	RefCLK-	Reference Clock inverted input, AC coupled on the host board – <b>Not required</b>	
26		GND	Module Ground	1
27		GND	Module Ground	1
28	CML-I	TD-	Transmitter inverted data input	
29	CML-I	TD+	Transmitter non-inverted data input	
30		GND	Module Ground	1

**Notes:**

1. Module circuit ground is isolated from module chassis ground within the module.
2. Open collector; should be pulled up with 4.7k – 10kohms on host board to a voltage between 3.15V and 3.6V.

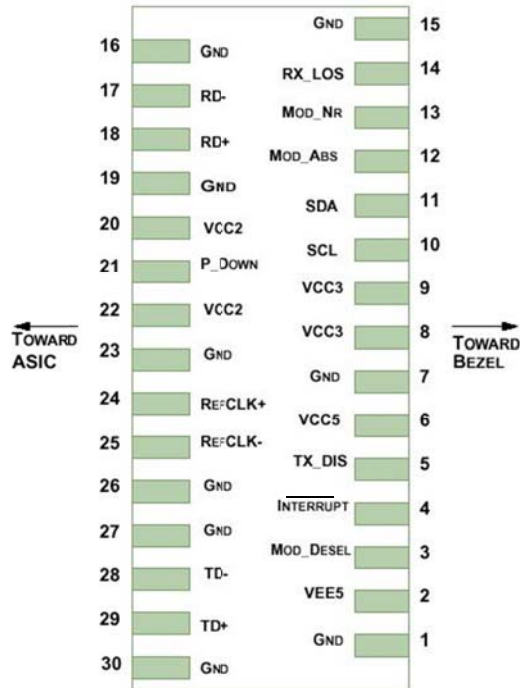


Diagram of Host Board Connector Block Pin Numbers and Names

## II. Absolute Maximum Ratings

Parameter	Symbol	Min	Typ	Max	Unit	Ref.
Maximum Supply Voltage #1	Vcc3	-0.5		4.0	V	
Maximum Supply Voltage #2	Vcc5	-0.5		6.0	V	
Storage Temperature	T <sub>S</sub>	-40		85	°C	
Case Operating Temperature	T <sub>OP</sub>	-40		85	°C	
Receiver Damage Threshold	R <sub>XDamage</sub>	+5			dBm	1

Note #1: spec based on steady-state optical power.

**III. Electrical Characteristics ( $T_{OP} = -40$  to  $85$  °C,  $V_{CC5} = 4.75$  to  $5.25$  Volts)**

Parameter	Symbol	Min	Typ	Max	Unit	Ref.	
Supply Voltage #1	Vcc5	4.75		5.25	V		
Supply Voltage #2	Vcc3	3.13		3.46	V		
Supply Current – Vcc3 supply	Icc3			750	mA		
Supply Current – Vcc5 supply	Icc5			350	mA		
Module total power (-5 to 85°C)	P			3.5	W	1	
<b>Transmitter</b>							
Input differential impedance	$R_{in}$		100		$\Omega$	2	
Differential data input swing	$V_{in,pp}$	120		820	mV		
Transmit Disable Voltage	$V_D$	2.0		Vcc	V	3	
Transmit Enable Voltage	$V_{EN}$	GND		GND+ 0.8	V		
Transmit Disable Assert Time				100	us		
<b>Receiver</b>							
Differential data output swing	$V_{out,pp}$	340	650	850	mV	4	
Data output rise time	$t_r$			40	ps	5	
Data output fall time	$t_f$			40	ps	5	
LOS Fault	$V_{LOS\ fault}$	$V_{cc} - 0.5$		$V_{cc_{HOST}}$	V	6	
LOS Normal	$V_{LOS\ norm}$	GND		GND+0.5	V	6	
Power Supply Rejection	PSR	See Note 6 below					7

Notes:

1. Maximum total power value is specified across the full temperature and voltage range.
2. After internal AC coupling.
3. Or open circuit.
4. Into 100 ohms differential termination.
5. 20 – 80 %
6. Loss Of Signal is open collector to be pulled up with a 4.7k – 10kohm resistor to 3.15 – 3.6V. Logic 0 indicates normal operation; logic 1 indicates no signal detected.
7. Per Section 2.7.1. in the XFP MSA Specification<sup>1</sup>.

#### IV. Optical Characteristics (EOL, T<sub>OP</sub> = -40 to 85°C, V<sub>CC5</sub> = 4.75 to 5.25 Volts)

Please note that the Transmitter of the FTLX1812M3BTL becomes operational within 5 seconds of power-up. This is due to the time required for the EML to reach its optimum operating temperature.

Parameter	Symbol	Min	Typ	Max	Unit	Ref.
<b>Transmitter</b>						
Output Opt. Pwr: 9/125 SMF	P <sub>OUT</sub>	0		+4	dBm	
Optical Extinction Ratio	ER	9			dB	
Center Wavelength	λ <sub>c</sub>	1530		1565	pm	
Sidemode Supression ratio	SSR <sub>min</sub>	30			dB	
Tx Jitter (SONET) 20kHz-80MHz	Tx <sub>j1</sub>			0.3	UI	1
Tx Jitter (SONET) 4MHz – 80MHz	Tx <sub>j2</sub>			0.1	UI	1
Relative Intensity Noise	RIN			-130	dB/Hz	
<b>Receiver</b>						
Receiver Sensitivity @ 8.5Gb/s	R <sub>SENS1</sub>			-24	dBm	2,3
Receiver Sensitivity @ 9.95Gb/s	R <sub>SENS2</sub>			-24	dBm	2,3
Receiver Sensitivity @ 10.7Gb/s	R <sub>SENS3</sub>			-24	dBm	2,3
Receiver Sensitivity @ 11.1Gb/s	R <sub>SENS4</sub>			-23	dBm	2,3
Receiver Sensitivity @ 11.35Gb/s	R <sub>SENS5</sub>			-22.5	dBm	2,3
Maximum Input Power	P <sub>MAX</sub>	-7			dBm	
Optical Center Wavelength	λ <sub>c</sub>	1270		1600	nm	
Receiver Reflectance	R <sub>rx</sub>			-27	dB	
Path penalty at 1600 ps/nm @ 8.5Gb/s	DP <sub>1</sub>			2	dB	4
Path penalty at 1600 ps/nm @ 9.95Gb/s	DP <sub>2</sub>			2	dB	4
Path penalty at 1600 ps/nm @ 10.7Gb/s	DP <sub>3</sub>			3	dB	4
Path penalty at 1450 ps/nm @ 11.1Gb/s (BER 1e-4)	DP <sub>4</sub>			3	dB	4
Path penalty at 1300 ps/nm @ 11.35Gb/s (BER 1e-4)	DP <sub>5</sub>			3	dB	4
LOS De-Assert	LOS <sub>D</sub>			-30	dBm	
LOS Assert	LOS <sub>A</sub>	-37		-33	dBm	
LOS Hysteresis		0.5			dB	

##### Notes:

- GR-253-CORE Issue 4
- Measured at 1528-1600nm with worst ER; BER<10<sup>-12</sup>; PRBS31.
- Equivalent to -22.1 dBm OMA at ER = 9 dB.
- Dispersion penalty is measured in loopback using 18 ps/(nm\*km) fiber (SMF-28).

**V. General Specifications**

Parameter	Symbol	Min	Typ	Max	Units	Ref.
Bit Rate	BR	8.5		11.35	Gb/s	1,3
Bit Error Ratio	BER			$10^{-12}$		2
Max. Supported Link Length	L <sub>MAX</sub>		80		km	1

**Notes:**

- ITU-T G.959.1 P1L1-2D2, 10GBASE-ZR/ZW 10G Ethernet, 10G Fibre Channel 1200-SM-LL-L, ITU-T G.709 OTN/FEC (OTU2), 10GBASE-ZR/ZW OTN/FEC (OTU1e and OTU2e)
- Tested with a  $2^{31} - 1$  PRBS
- 8.5G operation with electrical Tx & Rx jitter compliance to 800-SM-LC-L requires a “rate select” change in the I2C interface to Byte 117, Bit 0. Please refer to Section VIII for a full description.

**VI. Environmental Specifications**

Finisar XFP transceivers have an operating temperature range from 0°C to +85°C case temperature.

Parameter	Symbol	Min	Typ	Max	Units	Ref.
Case Operating Temperature	T <sub>op</sub>	-40		85	°C	
Storage Temperature	T <sub>sto</sub>	-40		85	°C	

**VII. Regulatory Compliance**

Finisar XFP transceivers are Class 1 Laser Products. They are certified per the following standards:

Feature	Agency	Standard	Certificate Number
Laser Eye Safety	FDA/CDRH	CDRH 21 CFR 1040 and Laser Notice 50	9210176-77
Laser Eye Safety	TÜV	EN 60825-1: 2007, EN60825-2:2004+A1 IEC 60825-1: 2007 (2 <sup>nd</sup> Edition) IEC 60825-2: 2010 (3 <sup>rd</sup> Edition)	R72101686
Electrical Safety	TÜV	EN 60950:2006+A11	R72101686
Electrical Safety	UL/CSA	CLASS 3862.07 CLASS 3862.87	2283290

Copies of the referenced certificates are available at Finisar Corporation upon request.

## VIII. Digital Diagnostics Functions

As defined by the XFP MSA<sup>1</sup>, Finisar XFP transceivers provide digital diagnostic functions via a 2-wire serial interface, which allows real-time access to the following operating parameters:

- Transceiver temperature
- Laser bias current
- Transmitted optical power
- Received optical power
- Transceiver supply voltage

It also provides a sophisticated system of alarm and warning flags, which may be used to alert end-users when particular operating parameters are outside of a factory-set normal range.

The operating and diagnostics information is monitored and reported by a Digital Diagnostics Transceiver Controller (DDTC) inside the transceiver, which is accessed through the 2-wire serial interface. When the serial protocol is activated, the serial clock signal (SCL pin) is generated by the host. The positive edge clocks data into the XFP transceiver into those segments of its memory map that are not write-protected. The negative edge clocks data from the XFP transceiver. The serial data signal (SDA pin) is bi-directional for serial data transfer. The host uses SDA in conjunction with SCL to mark the start and end of serial protocol activation. The memories are organized as a series of 8-bit data words that can be addressed individually or sequentially. The 2-wire serial interface provides sequential or random access to the 8 bit parameters, addressed from 000h to the maximum address of the memory.

For more detailed information, including memory map definitions, please see the XFP MSA documentation<sup>1</sup>.

### **8.5Gb/s Fibre-Channel Support:**

To operate the FTLX1812M3BTL at 8.5Gb/s Fibre-Channel, the transceiver CDRs need to be placed in “8GFC” mode by changing the register value in EEPROM-Table 0, Byte 117, Bit 0.

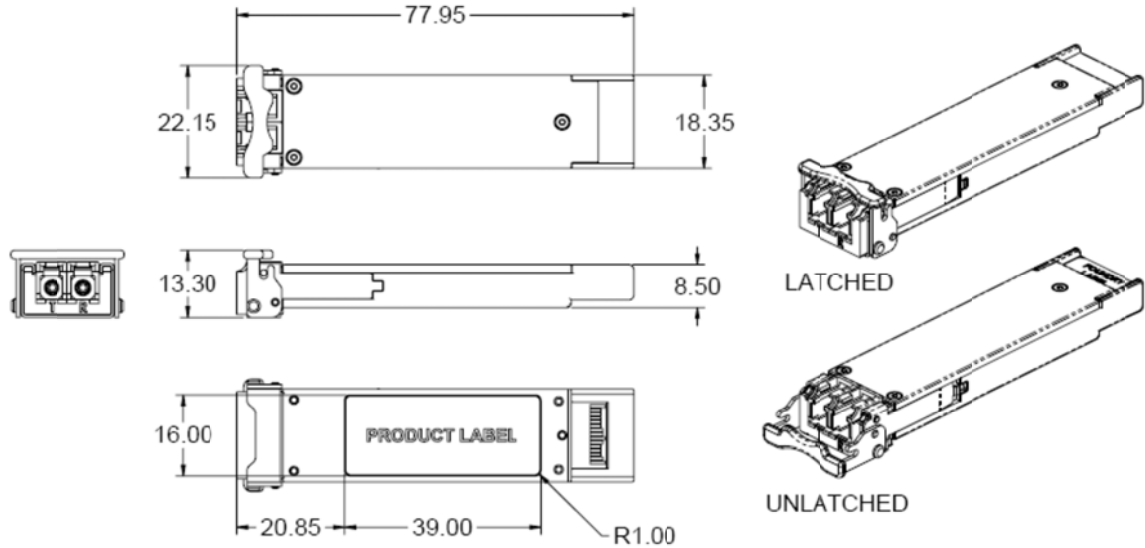
- EEPROM Byte 117, Bit 0 value for 8GFC operation: Bit 0 = 1
- EEPROM Byte 117, Bit 0 value for standard 10G operation: Bit 0 = 0

By default, a power cycling the transceiver will return the CDRs to standard 10G operation.



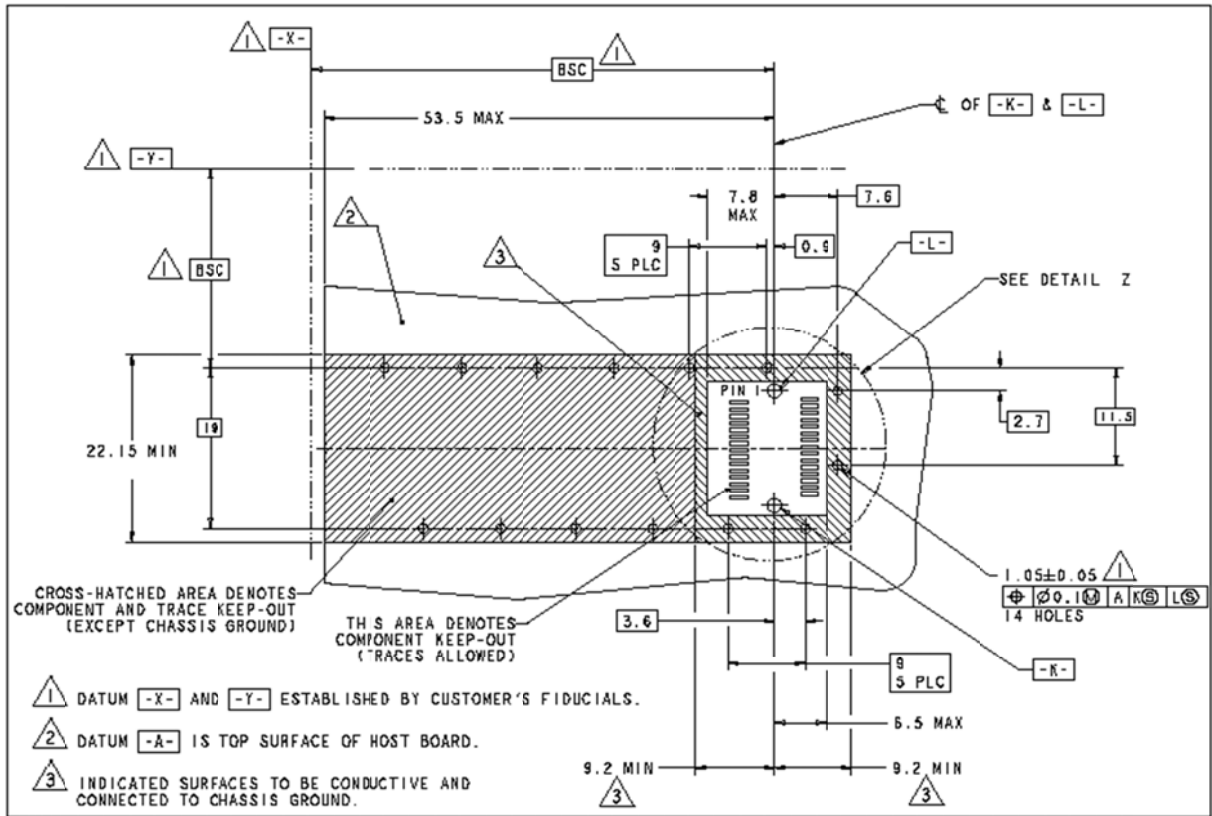
**IX. Mechanical Specifications**

Finisar’s XFP transceivers are compliant with the dimensions defined by the XFP Multi-Sourcing Agreement (MSA).

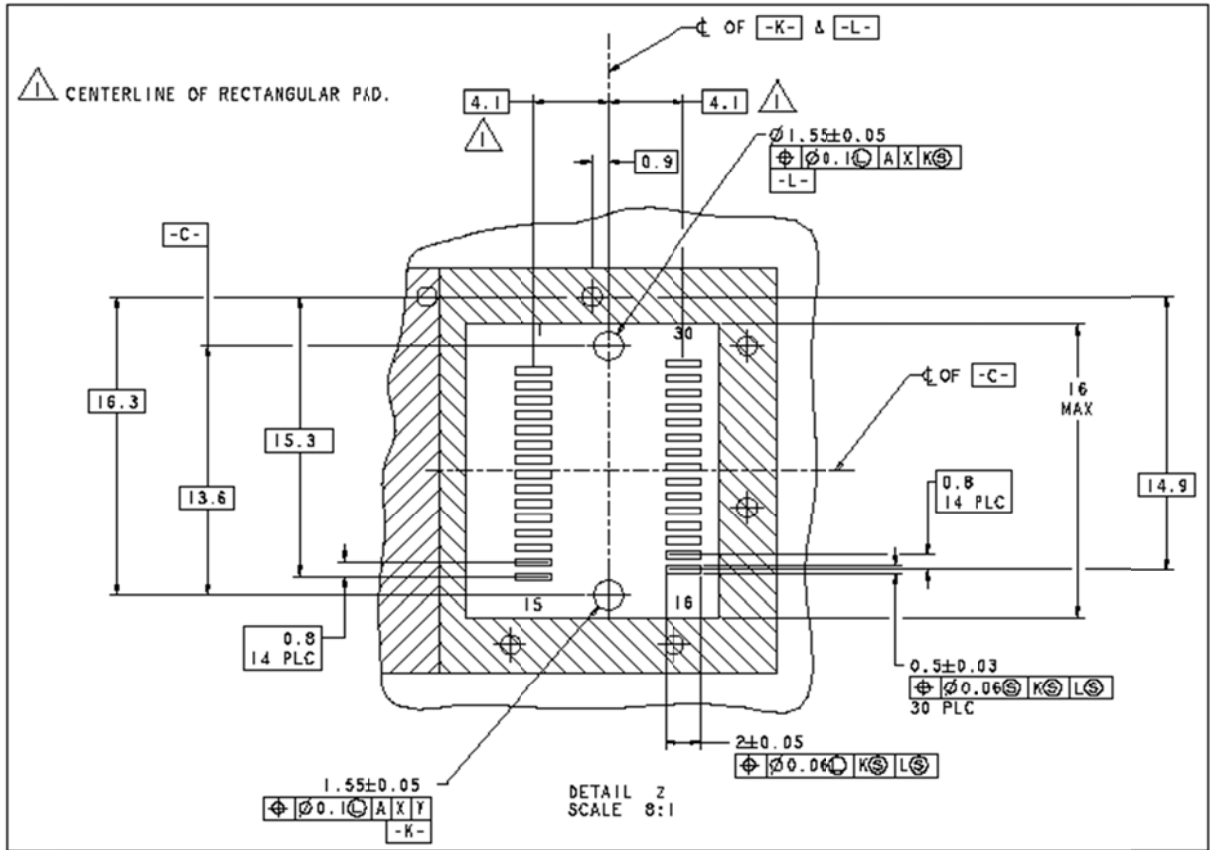


**XFP Transceiver (dimensions are in mm)**

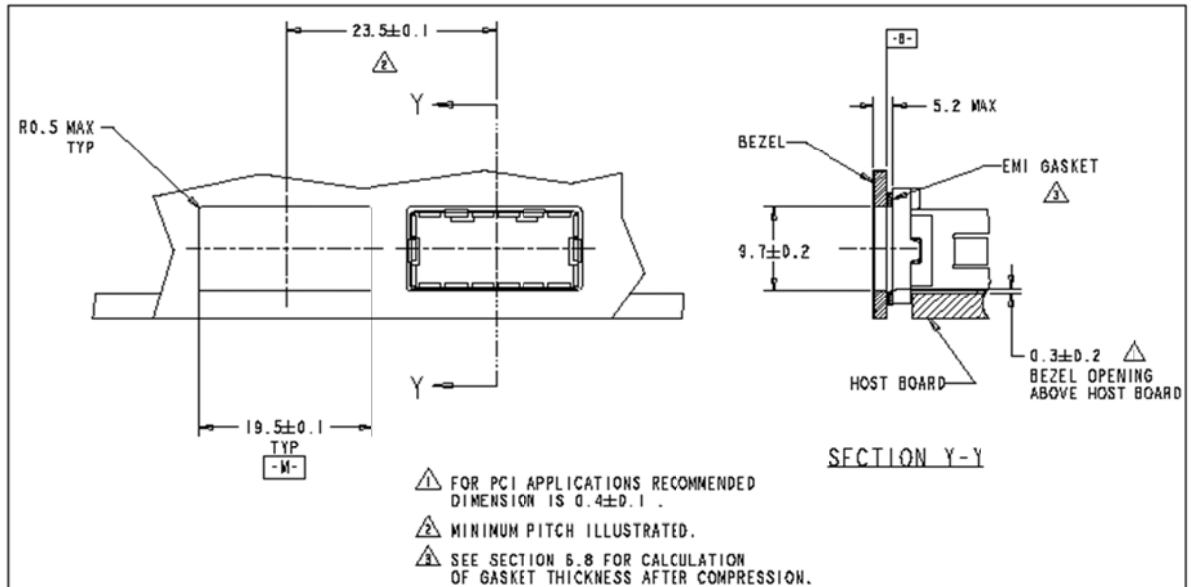
**X. PCB Layout and Bezel Recommendations**



**XFP Host Board Mechanical Layout (dimensions are in mm)**



**XFP Detail Host Board Mechanical Layout (dimensions are in mm)**



**XFP Recommended Bezel Design (dimensions are in mm)**

**XI. References**

1. 10 Gigabit Small Form Factor Pluggable Module (XFP) Multi-Source Agreement (MSA), INF-8077i, Rev 4.5 – August 2005. Documentation is currently available at <http://www.xfpmsa.org/>
2. Application Note AN-2035: “Digital Diagnostic Monitoring Interface for XFP Optical Transceivers” – Finisar Corporation, December 2003
3. Directive 2002/95/EC of the European Council Parliament and of the Council, “on the restriction of the use of certain hazardous substances in electrical and electronic equipment”. January 27, 2003.
4. “Application Note AN-2038: Finisar Implementation Of RoHS Compliant Transceivers”, Finisar Corporation, January 21, 2005.

**XII. For More Information**

Finisar Corporation  
1389 Moffett Park Drive  
Sunnyvale, CA 94089-1133  
Tel. 1-408-548-1000  
Fax 1-408-541-6138  
[sales@finisar.com](mailto:sales@finisar.com)  
[www.finisar.com](http://www.finisar.com)