



Chipsmall Limited consists of a professional team with an average of over 10 year of expertise in the distribution of electronic components. Based in Hongkong, we have already established firm and mutual-benefit business relationships with customers from,Europe,America and south Asia,supplying obsolete and hard-to-find components to meet their specific needs.

With the principle of "Quality Parts,Customers Priority,Honest Operation,and Considerate Service",our business mainly focus on the distribution of electronic components. Line cards we deal with include Microchip,ALPS,ROHM,Xilinx,Pulse,ON,Everlight and Freescale. Main products comprise IC,Modules,Potentiometer,IC Socket,Relay,Connector.Our parts cover such applications as commercial,industrial, and automotives areas.

We are looking forward to setting up business relationship with you and hope to provide you with the best service and solution. Let us make a better world for our industry!



## Contact us

Tel: +86-755-8981 8866 Fax: +86-755-8427 6832

Email & Skype: info@chipsmall.com Web: www.chipsmall.com

Address: A1208, Overseas Decoration Building, #122 Zhenhua RD., Futian, Shenzhen, China



DO NOT SCALE FROM THIS PRINT

TABLE 1		
LEAD STYLE	"A"	"B"
-02	.075 [1.91] $\text{\textcircled{C}}$	0.075
-03	.065 [1.65] $\text{\textcircled{C}}$	0.055

No OF POS PER ROW  
-02 THRU -50  
(SEE NOTE 10)

LEAD STYLE

-02: .075 [1.91]  
(USE T-1S16-03-XX-2)  
-03: .065 [1.65]  
(USE T-1S16-04-XX-2)

PLATING SPECIFICATION

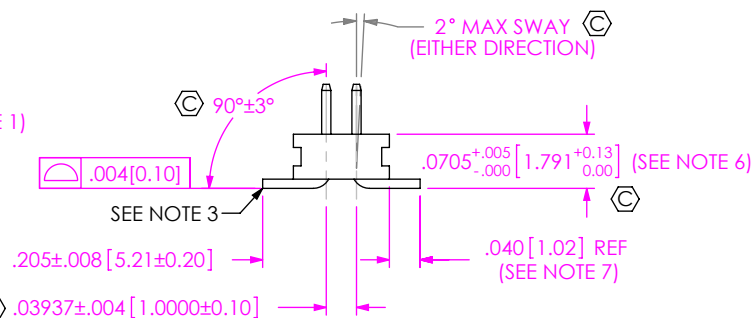
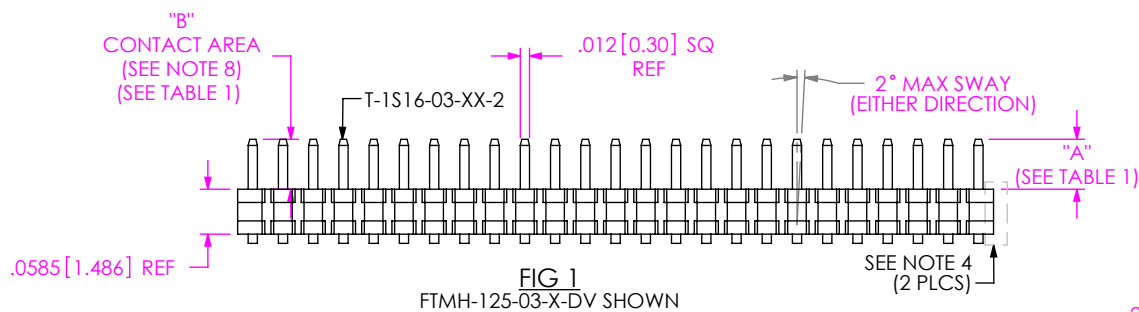
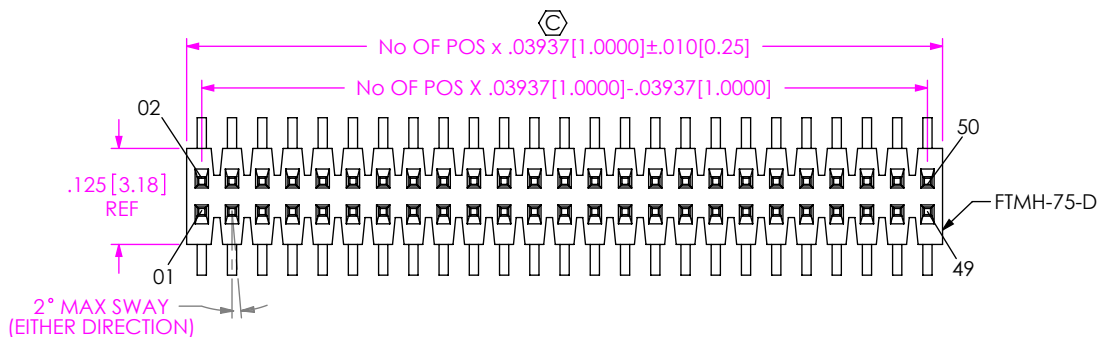
-L: 10 $\mu$ " LIGHT SELECTIVE GOLD IN CONTACT AREA, MATTE TIN ON TAIL  
-F: 3 $\mu$ " FLASH SELECTIVE GOLD IN CONTACT AREA, MATTE TIN ON TAIL  
-H: 30 $\mu$ " HEAVY GOLD IN CONTACT AREA, 3 $\mu$ " FLASH GOLD ON TAIL  
-G: 10 $\mu$ " GOLD IN CONTACT AREA, 3 $\mu$ " FLASH GOLD ON TAIL  
-LM: 10 $\mu$ " LIGHT SELECTIVE GOLD IN CONTACT AREA, MATTE TIN ON TAIL  
-FM: 3 $\mu$ " FLASH SELECTIVE GOLD IN CONTACT AREA, MATTE TIN ON TAIL

OPTIONS

-P: PICK & PLACE PAD (USE PPP-30) (USE PPP-30-NT FOR TAPE & REEL) (SEE FIG 3, SHT 4: 6 POS MIN)  
-TR: TAPE & REEL PACKAGING  
-ES: SNAP ON END SHROUDS (SEE FIG 2, SHT 2: 9 POS MIN) MOLD TO POSITION END SHROUDS (5 POS MIN; SEE FIG 2, SHT 2) (SAMTEC DISCRETION ON WHICH END SHROUDS ARE USED FOR POSITIONS -09 AND GREATER)  
-EP: GUIDE POST (SEE FIG 4, SHT 4: 9 POS MIN) (USE ONLY WHEN MATING WITH A CLM)  
-EC: LOCKING CLIP (SEE FIG 5, SHT 4) (SEE NOTE 9: 9 POS MIN)  
-A: ALIGNMENT PIN (SEE FIG 6 & 7, SHT 5) (SAMTEC DISCRETION ON WHICH -A PIN IS USED) (MOLDED: 3 POS MIN, USE FTMH-75-D-XX) (STAKED: 7 POS MIN, USE FTMH-60-D)

ROW SPECIFICATION

-DV: DOUBLE ROW VERTICAL (USE FTMH-75-D)



NOTES:

- $\text{\textcircled{C}}$  REPRESENTS CRITICAL DIMENSION.
- MINIMUM PUSHOUT FORCE: 1.0 LB = 16 OZ.
- MAXIMUM BURR: .003 [0.08]
- MAXIMUM CUT FLASH: .010 [0.25]
- POSITIONS -02 THRU -04 TO BE LAYER PACKAGED.
- MEASURED AT BEND RADIUS.
- SHEAR TAILS TO DIMENSION SHOWN.
- FOR SELECTIVE PLATING OPTIONS, GOLD PLATING TO BE ON POST, TIN PLATING TO BE ON TAIL.
- DUE TO THE HIGH AMOUNT OF INSERTION FORCE NEEDED, THE -EC OPTION IS NOT COMPATIBLE WITH AUTO PLACEMENT. SAMTEC RECOMMENDS MANUAL PLACEMENT FOR ALL ASSEMBLIES WITH THE -EC OPTION.
- NUMBER OF POSITIONS MAY BE AS HIGH AS -75 FOR SAMTEC MANUFACTURING ONLY.

UNLESS OTHERWISE SPECIFIED, DIMENSIONS ARE IN INCHES.

TOLERANCES ARE:

DECIMALS ANGLES  
.XX: ± .01 [0.3]  
.XXX: ± .005 [0.13]  
.XXXX: ± .0020 [0.051]

PROPRIETARY NOTE

THIS DOCUMENT CONTAINS CONFIDENTIAL AND PROPRIETARY INFORMATION AND ALL DESIGN, MANUFACTURING, REPRODUCTION, USE, PATENT RIGHTS AND SALES RIGHTS ARE EXPRESSLY RESERVED BY SAMTEC, INC. THIS DOCUMENT SHALL NOT BE DISCLOSED, IN WHOLE OR PART, TO ANY UNAUTHORIZED PERSON OR ENTITY NOR REPRODUCED, TRANSFERRED OR INCORPORATED IN ANY OTHER PROJECT IN ANY MANNER WITHOUT THE EXPRESS WRITTEN CONSENT OF SAMTEC, INC.



520 PARK EAST BLVD, NEW ALBANY, IN 47150  
PHONE: 812-944-6733 FAX: 812-948-5047  
e-Mail: info@SAMTEC.com code: 55322

MATERIAL DO NOT SCALE DRAWING SHEET SCALE: 5:1

INSULATOR: BLACK, LCP, UL-94-V-0  
TERMINAL: PHOSPHOR BRONZE

DESCRIPTION: 1mm x 1mm DOUBLE VERTICAL SMT TERMINAL STRIP

DWG. NO. FTMH-1XX-XX-XX-DV-XX

BY: PURVIS 04/22/96 SHEET 1 OF 5

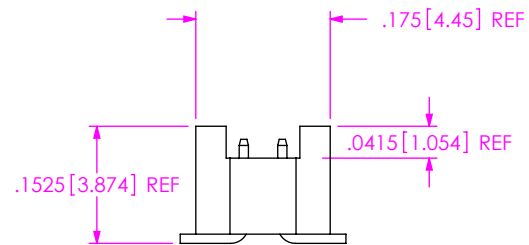
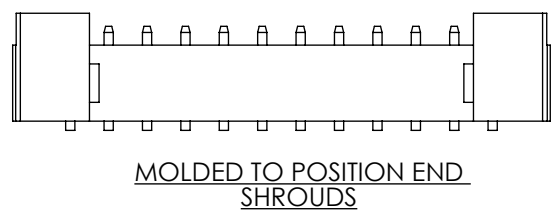
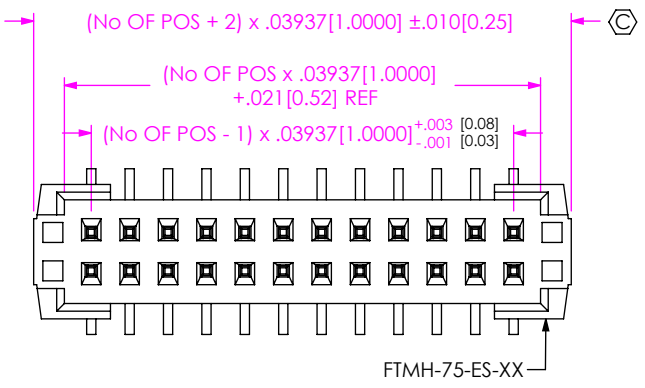
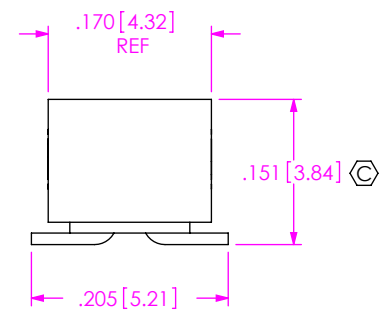
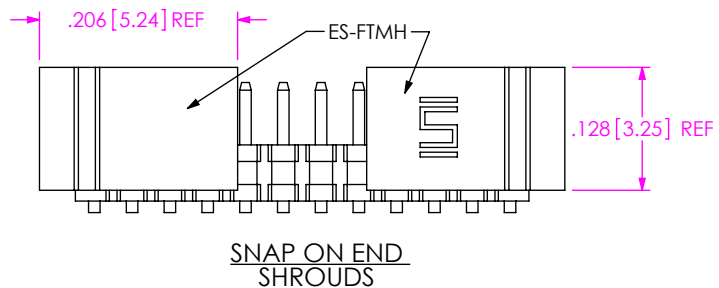
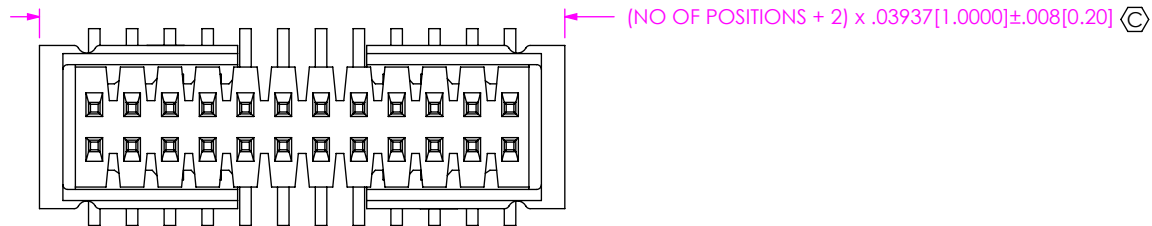


FIG 2  
-ES: END SHROUDS  
FTMH-112-02-X-DV-ES SHOWN  
(DIFFERENT AS SHOWN, OTHERWISE SAME AS FIG 1)

**PROPRIETARY NOTE**  
THIS DOCUMENT CONTAINS CONFIDENTIAL AND PROPRIETARY INFORMATION AND ALL DESIGN, MANUFACTURING, REPRODUCTION, USE, PATENT RIGHTS AND SALES RIGHTS ARE EXPRESSLY RESERVED BY SAMTEC, INC. THIS DOCUMENT SHALL NOT BE DISCLOSED, IN WHOLE OR PART, TO ANY UNAUTHORIZED PERSON OR ENTITY NOR REPRODUCED, TRANSFERRED OR INCORPORATED IN ANY OTHER PROJECT IN ANY MANNER WITHOUT THE EXPRESS WRITTEN CONSENT OF SAMTEC, INC.

DO NOT SCALE DRAWING

SHEET SCALE: 5:1

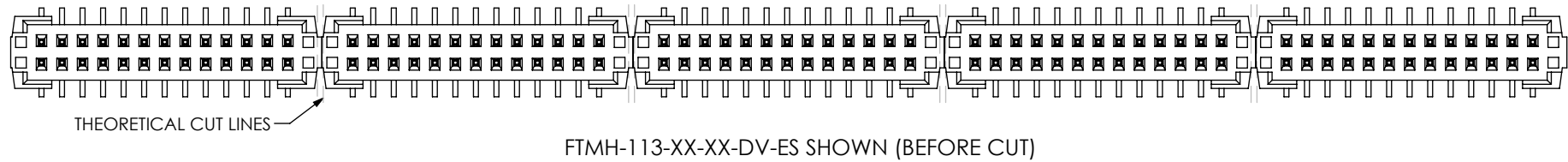
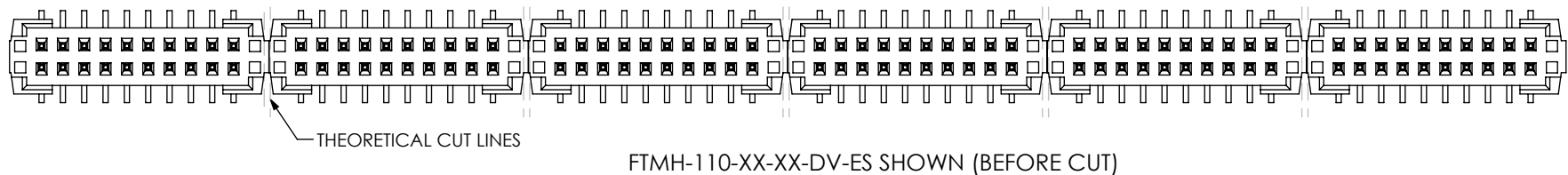
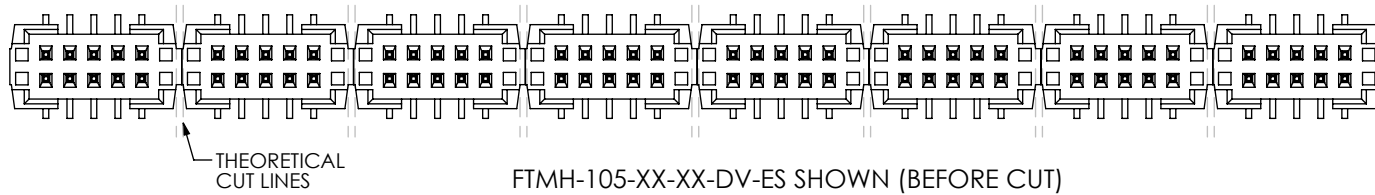


520 PARK EAST BLVD, NEW ALBANY, IN 47150  
PHONE: 812-944-6733 FAX: 812-948-5047  
e-Mail: info@SAMTEC.com code: 55322

DESCRIPTION:  
1mm x 1mm DOUBLE VERTICAL SMT TERMINAL STRIP

DWG. NO.  
FTMH-1XX-XX-XX-DV-XX

BY: PURVIS 04/22/96 SHEET 2 OF 5



**PROPRIETARY NOTE**  
 \* THIS DOCUMENT CONTAINS CONFIDENTIAL AND PROPRIETARY INFORMATION AND ALL DESIGN, MANUFACTURING, REPRODUCTION, USE, PATENT RIGHTS AND SALES RIGHTS ARE EXPRESSLY RESERVED BY SAMTEC, INC. THIS DOCUMENT SHALL NOT BE DISCLOSED, IN WHOLE OR PART, TO ANY UNAUTHORIZED PERSON OR ENTITY NOR REPRODUCED, TRANSFERRED OR INCORPORATED IN ANY OTHER PROJECT IN ANY MANNER WITHOUT THE EXPRESS WRITTEN CONSENT OF SAMTEC, INC.

DO NOT SCALE DRAWING  
 SHEET SCALE: 5:1



520 PARK EAST BLVD, NEW ALBANY, IN 47150  
 PHONE: 812-944-6733 FAX: 812-948-5047  
 e-Mail: info@SAMTEC.com code: 55322

DESCRIPTION:  
 1mm x 1mm DOUBLE VERTICAL SMT TERMINAL STRIP

DWG. NO. FTMH-1XX-XX-XX-DV-XX

BY: PURVIS 04/22/96 SHEET 3 OF 5



NOTE  
 "M" = USED MEASURED DIMENSION (REF)  
 "P" =  $(("M" - .200[5.08]) / 2) \pm .020[.51]$

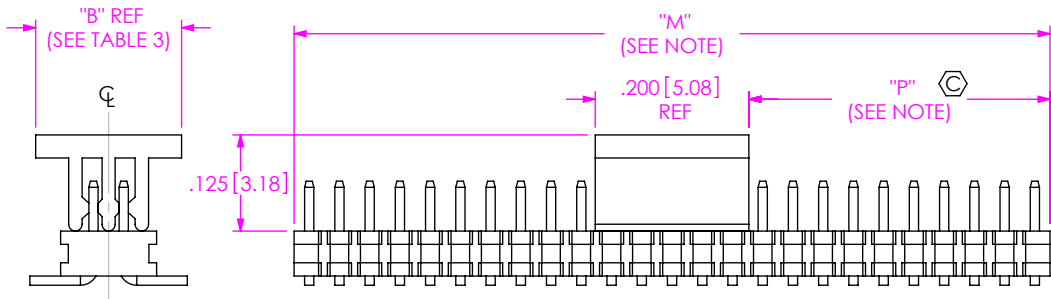


FIG 3  
 -P: PICK & PLACE PAD  
 FTMH-125-03-X-DV-P SHOWN  
 (DIFFERENT AS SHOWN, OTHERWISE SAME AS FIG 1)

TABLE 3	
PAD	"B"
PPP-30	.125[3.18]
PPP-30-NT	.190[4.83]

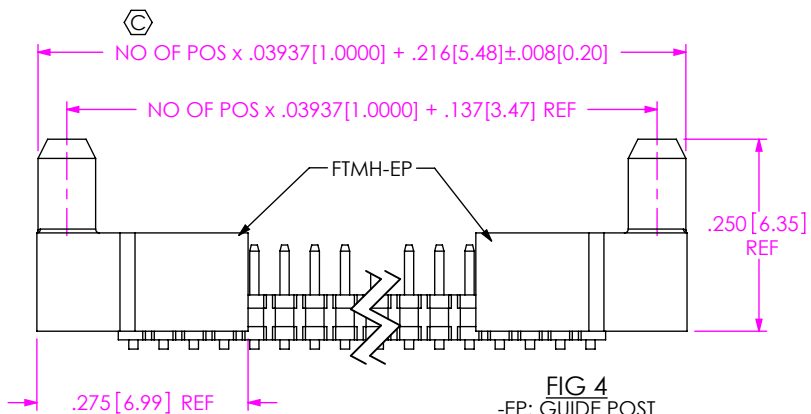


FIG 4  
 -EP: GUIDE POST  
 FTMH-125-03-X-DV-EP SHOWN  
 (DIFFERENT AS SHOWN, OTHERWISE SAME AS FIG 1)

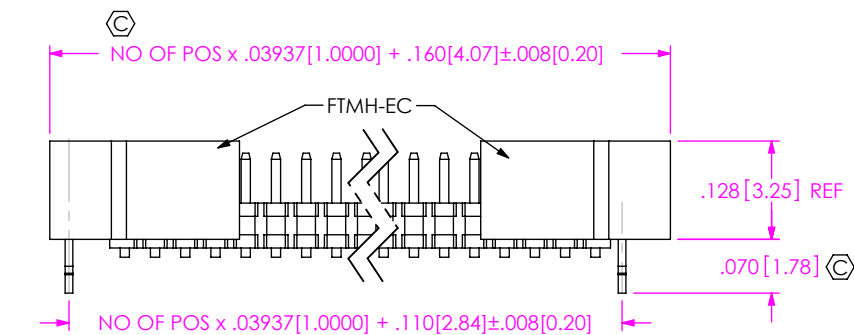
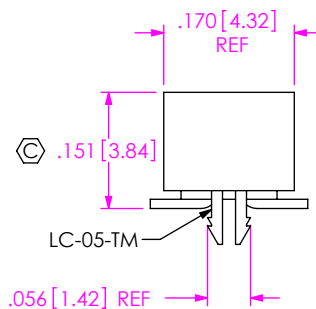
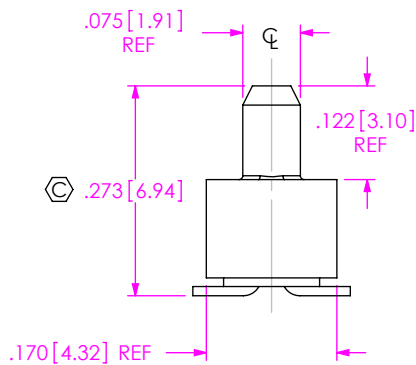


FIG 5  
 -EC: LOCKING CLIP  
 FTMH-125-03-X-DV-EC SHOWN  
 (DIFFERENT AS SHOWN, OTHERWISE SAME AS FIG 1)



**PROPRIETARY NOTE**  
 THIS DOCUMENT CONTAINS CONFIDENTIAL AND PROPRIETARY INFORMATION AND ALL DESIGN, MANUFACTURING, REPRODUCTION, USE, PATENT RIGHTS AND SALES RIGHTS ARE EXPRESSLY RESERVED BY SAMTEC, INC. THIS DOCUMENT SHALL NOT BE DISCLOSED, IN WHOLE OR PART, TO ANY UNAUTHORIZED PERSON OR ENTITY NOR REPRODUCED, TRANSFERRED OR INCORPORATED IN ANY OTHER PROJECT IN ANY MANNER WITHOUT THE EXPRESS WRITTEN CONSENT OF SAMTEC, INC.

DO NOT SCALE DRAWING

SHEET SCALE: 5:1

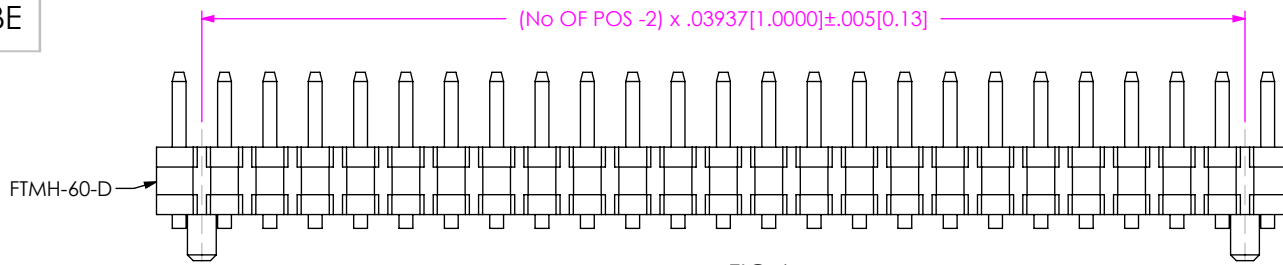


520 PARK EAST BLVD, NEW ALBANY, IN 47150  
 PHONE: 812-944-6733 FAX: 812-948-5047  
 e-Mail: info@SAMTEC.com code: 55322

DESCRIPTION:  
 1mm x 1mm DOUBLE VERTICAL SMT TERMINAL STRIP

DWG. NO.  
**FTMH-1XX-XX-XX-DV-XX**

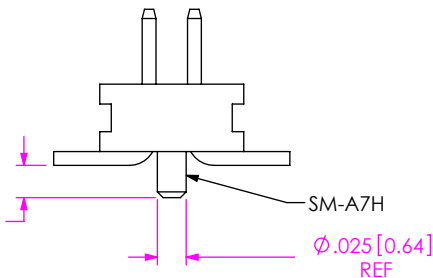
BY: PURVIS 04/22/96 SHEET 4 OF 5



FTMH-60-D

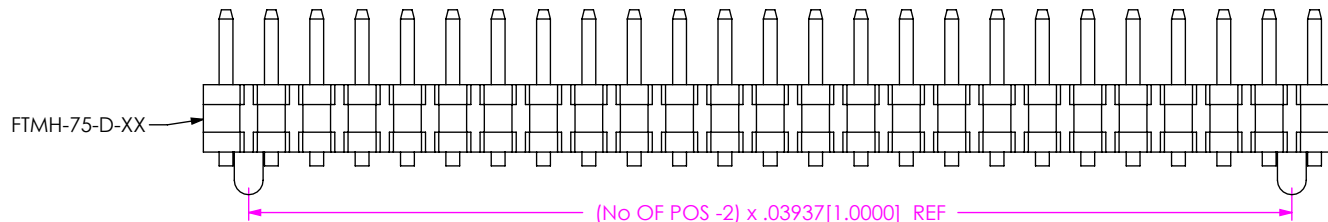
**FIG 6**  
 -A: ALIGNMENT PIN (STAKED)  
 (MIN 7 POSITIONS)  
 FTMH-125-03-X-DV-A SHOWN  
 (DIFFERENT AS SHOWN, OTHERWISE SAME AS FIG 1)

⊕ .028 [0.71]



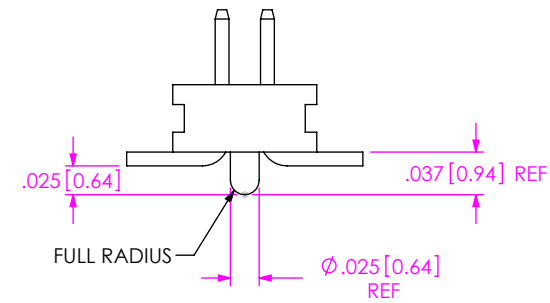
SM-A7H

∅.025 [0.64] REF



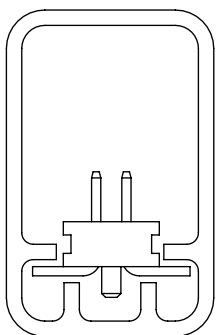
FTMH-75-D-XX

**FIG 7**  
 -A: ALIGNMENT PIN (MOLDED)  
 (MIN 3 POSITIONS)  
 FTMH-125-03-X-DV-A SHOWN  
 (DIFFERENT AS SHOWN, OTHERWISE SAME AS FIG 1)

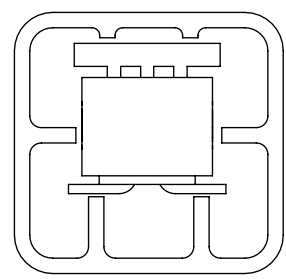


FULL RADIUS

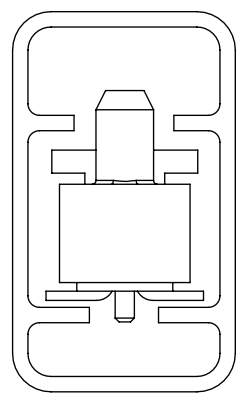
∅.025 [0.64] REF



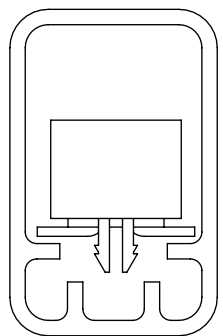
-A OPTION  
 PT-1-24-01-60



-ES-P OPTION  
 PT-1-24-01-63



-EP-A-P OPTION  
 PT-1-24-02-15



-EC OPTION  
 PT-1-24-01-60 **BE**

**PACKAGING VIEWS**

**TABLE 2**  
 (SEE NOTE 5 FOR PACKAGING NOTES)

LEAD STYLE	OPTION (S)	PACKAGING TUBE	TUBE PLUG
-02, -03	-NONE	PT-1-24-01-60	TP-03 (x 2)
-02, -03	-A	PT-1-24-01-60	TP-03 (x 2)
-02, -03	-P, -A-P	PT-1-24-01-60	TP-03 (x 2)
-02, -03	-ES, -ES-P, -ES-A, EP	PT-1-24-01-63	TP-24 (x 2)
-02, -03	-EC, -EC-P, -EC-A	PT-1-24-01-60	TP-03 (x 2)
-02, -03	-EP-A, -EP-A-P	PT-1-24-02-15	TP-03 (x 2)

**PROPRIETARY NOTE**  
 THIS DOCUMENT CONTAINS CONFIDENTIAL AND PROPRIETARY INFORMATION AND ALL DESIGN, MANUFACTURING, REPRODUCTION, USE, PATENT RIGHTS AND SALES RIGHTS ARE EXPRESSLY RESERVED BY SAMTEC, INC. THIS DOCUMENT SHALL NOT BE DISCLOSED, IN WHOLE OR PART, TO ANY UNAUTHORIZED PERSON OR ENTITY NOR REPRODUCED, TRANSFERRED OR INCORPORATED IN ANY OTHER PROJECT IN ANY MANNER WITHOUT THE EXPRESS WRITTEN CONSENT OF SAMTEC, INC.

DO NOT SCALE DRAWING

SHEET SCALE: 5:1



520 PARK EAST BLVD, NEW ALBANY, IN 47150  
 PHONE: 812-944-6733 FAX: 812-948-5047  
 e-Mail: info@SAMTEC.com code: 55322

DESCRIPTION:  
 1mm x 1mm DOUBLE VERTICAL SMT TERMINAL STRIP

DWG. NO. **FTMH-1XX-XX-XX-DV-XX**

BY: PURVIS 04/22/96 SHEET 5 OF 5