



Chipsmall Limited consists of a professional team with an average of over 10 year of expertise in the distribution of electronic components. Based in Hongkong, we have already established firm and mutual-benefit business relationships with customers from,Europe,America and south Asia,supplying obsolete and hard-to-find components to meet their specific needs.

With the principle of “Quality Parts,Customers Priority,Honest Operation,and Considerate Service”,our business mainly focus on the distribution of electronic components. Line cards we deal with include Microchip,ALPS,ROHM,Xilinx,Pulse,ON,Everlight and Freescale. Main products comprise IC,Modules,Potentiometer,IC Socket,Relay,Connector.Our parts cover such applications as commercial,industrial, and automotives areas.

We are looking forward to setting up business relationship with you and hope to provide you with the best service and solution. Let us make a better world for our industry!



## Contact us

Tel: +86-755-8981 8866 Fax: +86-755-8427 6832

Email & Skype: info@chipsmall.com Web: www.chipsmall.com

Address: A1208, Overseas Decoration Building, #122 Zhenhua RD., Futian, Shenzhen, China





# FWH 500V 35-1600A

Type	Electrical Characteristics				Ordering Information			Dimensions	Curves
	Rated Current RMS-Amps	I <sup>2</sup> t (A <sup>2</sup> Sec)		Watts Loss	Part Number	Carton Qty.	Carton Weight (lbs)	Figure Number	BIF #
		Pre-arc	Clearing at 500V						
FWH 500V	35	34	150	8	FWH-35B	5	0.71	Fig. 1	35785304
	40	76	320	7.5	FWH-40B				
	45	105	450	7.5	FWH-45B				
	50	135	670	7.5	FWH-50B				
	60	210	900	9.9	FWH-60B				
	70	210	900	10.6	FWH-70B	1	0.21		
	80	305	1400	12.7	FWH-80B				
	90	360	1600	15	FWH-90B				
	100	475	2000	17	FWH-100B				
	125	800	3500	25	FWH-125B				
	150	1100	4600	30	FWH-150B				
	175	1450	6200	35	FWH-175B				
	200	1900	8500	40	FWH-200B				
	225	4600	23300	39	FWH-225A	0.57			
	250	6300	32200	41	FWH-250A				
	275	7900	40300	46	FWH-275A				
	300	9800	49800	51	FWH-300A				
	325	13700	63800	53	FWH-325A				
	350	14500	72900	58	FWH-350A				
	400	19200	96700	65	FWH-400A				
450	24700	127000	74	FWH-450A	1.00				
500	29200	149000	84	FWH-500A					
600	41300	206000	108	FWH-600A					
700	55000	298000	120	FWH-700A					
800	76200	409000	129	FWH-800A		2.14			
1000	92000	450000	145	FWH-1000A					
1200	122000	600000	180	FWH-1200A					
1400	200000	1000000	210	FWH-1400A	4.62				
1600	290000	1400000	230	FWH-1600A					
								Fig. 2	35785304

†U.L. Recognition on 35 through 1200 amperes only.  
 CSA Component Acceptance: 35 - 1600A.

1 kg = 2.2 lbs 1 lb = 0.45 kg

- Interrupting rating 200kA RMS Symmetrical.
- Watts loss provided at rated current.
- (500 Vdc/Interrupting rating 50kA) U.L. Recognition on 35 through 800 amperes only.

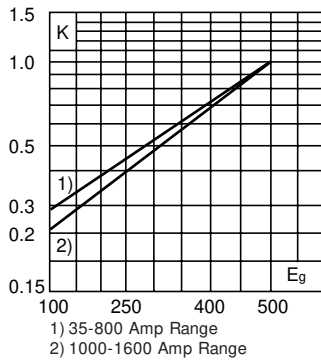


# FWH 500V 35-1600A

## Electrical Characteristics

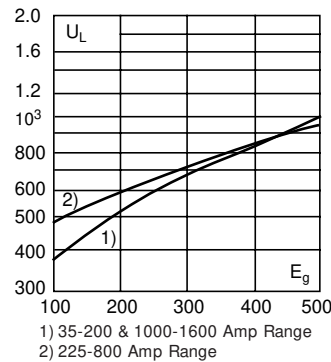
### Total Clearing I<sup>2</sup>t

The total clearing I<sup>2</sup>t at rated voltage and at power factor of 15% are given in the electrical characteristics. For other voltages, the clearing I<sup>2</sup>t is found by multiplying by correction factor, K, given as a function of applied working voltage, E<sub>g</sub>, (RMS).



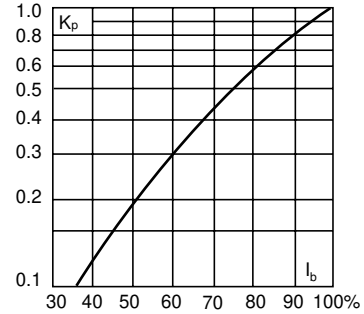
### Arc Voltage

This curve gives the peak arc voltage, U<sub>L</sub>, which may appear across the fuse during its operation as a function of the applied working voltage, E<sub>g</sub>, (RMS) at a power factor of 15%.



### Power Losses

Watts loss at rated current is given in the electrical characteristics. The curve allows the calculation of the power losses at load currents lower than the rated current. The correction factor, K<sub>p</sub>, is given as a function of the RMS load current, I<sub>b</sub>, in % of the rated current.



## Dimensions

Fig. 1: 35-1200 Amp Range

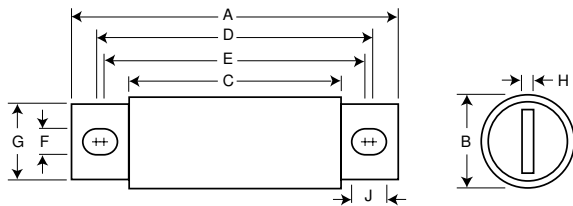
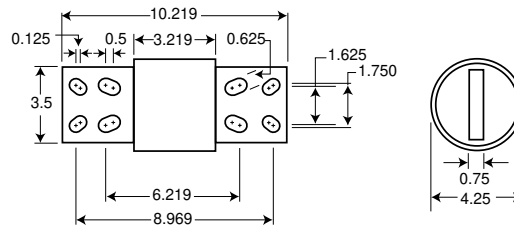


Fig. 2: 1400-1600 Amp Range



Order #	Fig.	A	B	C	D	E	F	G	H	J
FWH-35B-60B	1	3.188	0.813	1.593	2.541	2.193	0.344	0.719	0.125	0.518
FWH-70B-100B	1	3.625	0.947	1.736	2.853	2.807	0.352	0.750	0.125	0.375
FWH-125B-200B	1	3.625	1.156	1.836	2.892	2.768	0.344	1.000	0.188	0.406
FWH-225A-400A	1	4.340	1.500	2.090	3.440	2.750	0.410	1.000	0.250	0.750
FWH-450A-600A	1	4.340	2.000	2.090	3.530	2.780	0.410	1.500	0.250	0.780
FWH-700A-800A	1	6.340	2.500	2.090	4.970	3.440	0.530	2.000	0.380	1.300
FWH-1000A-1200A	1	6.969	3.000	3.219	5.465	4.475	0.625	2.375	0.438	1.120
FWH-1400A-1600A	2	See Drawing								

Dimension in inches.  
1mm = 0.0394" 1" = 25.4mm

The only controlled copy of this BIF document is the electronic read-only version located on the Bussmann Network Drive. All other copies of this document are by definition uncontrolled. This bulletin is intended to clearly present comprehensive product data and provide technical information that will help the end user with design applications. Bussmann reserves the right, without notice, to change design or construction of any products and to discontinue or limit distribution of any products. Bussmann also reserves the right to change or update, without notice, any technical information contained in this bulletin. Once a product has been selected, it should be tested by the user in all possible applications.