



Chipsmall Limited consists of a professional team with an average of over 10 year of expertise in the distribution of electronic components. Based in Hongkong, we have already established firm and mutual-benefit business relationships with customers from,Europe,America and south Asia,supplying obsolete and hard-to-find components to meet their specific needs.

With the principle of “Quality Parts,Customers Priority,Honest Operation,and Considerate Service”,our business mainly focus on the distribution of electronic components. Line cards we deal with include Microchip,ALPS,ROHM,Xilinx,Pulse,ON,Everlight and Freescale. Main products comprise IC,Modules,Potentiometer,IC Socket,Relay,Connector.Our parts cover such applications as commercial,industrial, and automotives areas.

We are looking forward to setting up business relationship with you and hope to provide you with the best service and solution. Let us make a better world for our industry!



Contact us

Tel: +86-755-8981 8866 Fax: +86-755-8427 6832

Email & Skype: info@chipsmall.com Web: www.chipsmall.com

Address: A1208, Overseas Decoration Building, #122 Zhenhua RD., Futian, Shenzhen, China





FWJ 1000V 35-2000A

Type	Electrical Characteristics				Ordering Information			Dimensions	Curves
	Rated Current RMS-Amps	I ² t (A ² Sec)		Watts Loss	Part Number	Carton Qty.	Carton Weight (lbs)	Figure Number	BIF #
		Pre-arc	Clearing at 1000V						
FWJ 1000V	35	210	2000	7	FWJ-35A	10	4.18	Fig. 1	35785303
	40	300	2500	8	FWJ-40A				
	50	470	3500	10	FWJ-50A				
	60	670	5000	11	FWJ-60A				
	70	1100	6900	12	FWJ-70A				
	80	1550	9700	13	FWJ-80A				
	90	1900	12000	14	FWJ-90A				
	100	2800	17500	15	FWJ-100A				
	125	4800	35000	16	FWJ-125A				
	150	6300	45000	25	FWJ-150A				
	175	7500	65000	30	FWJ-175A				
	200	11700	80000	32	FWJ-200A	1	4.84	Fig. 1	35785309
	250	16000	112000	50	FWJ-250A				
	300	23500	164000	56	FWJ-300A				
	350	33000	231000	62	FWJ-350A				
	400	47000	330000	67	FWJ-400A				
	500	39500	329000	95	FWJ-500A				
	600	61000	520000	105	FWJ-600A				
	800	87000	500000	182	FWJ-800A				
	1000	190000	1100000	206	FWJ-1000A				
1200	370000	2100000	240	FWJ-1200A					
1400	470000	2700000	248	FWJ-1400A					
1600	700000	4000000	267	FWJ-1600A					
1800	925000	5300000	239	FWJ-1800A					
2000	1330000	7600000	244	FWJ-2000A					

†U.L. Recognition on 35 through 600 amperes only.

- Interrupting rating 25kA for 35 through 200 amperes.
- Interrupting rating 100kA for 250 through 2000 amperes.
- Watts loss provided at rated current.
- (800 Vdc/Interrupting rating 50kA) U.L. Recognition on 35-200 and 450-600 amperes.

1 kg = 2.2 lbs 1 lb = 0.45 kg

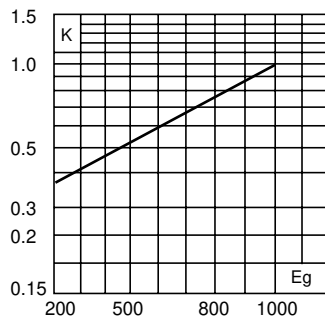


FWJ 1000V 35-2000A

Electrical Characteristics

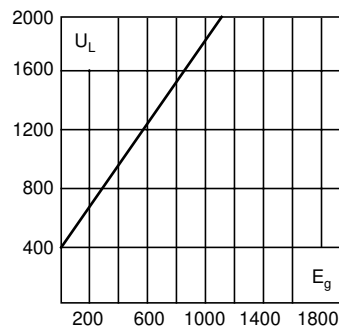
Total Clearing I²t

The total clearing I²t at rated voltage and at power factor of 15% are given in the electrical characteristics. For other voltages, the clearing I²t is found by multiplying by correction factor, K, given as a function of applied working voltage, E_g, (RMS).



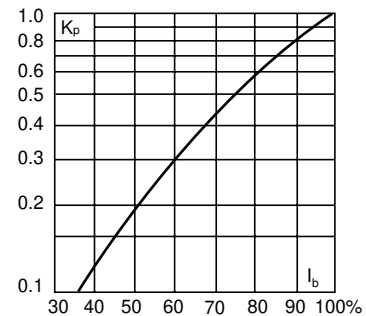
Arc Voltage

This curve gives the peak arc voltage, U_L, which may appear across the fuse during its operation as a function of the applied working voltage, E_g, (RMS) at a power factor of 15%.



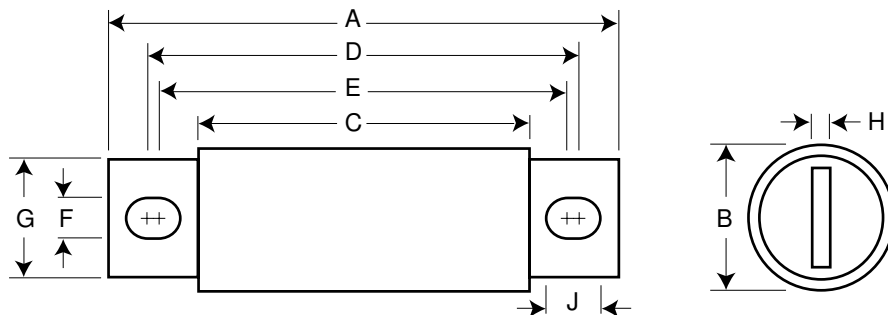
Power Losses

Watts loss at rated current is given in the electrical characteristics. The curve allows the calculation of the power losses at load currents lower than the rated current. The correction factor, K_p, is given as a function of the RMS load current, I_b, in % of the rated current.



Dimensions

Fig. 1: 35-2000 Amp Range



Order #	Fig.	A	B	C	D	E	F	G	H	J
FWJ-35A-60A	1	5.000	0.940	3.110	4.235	4.180	0.352	0.750	0.125	0.380
FWJ-70A-100A	1	4.932	1.125	3.085	4.266	4.156	0.352	1.000	0.188	0.407
FWJ-125A-200A	1	5.685	1.526	3.261	4.803	4.055	0.445	1.000	0.250	0.819
FWJ-250A-400A	1	5.768	2.000	3.500	4.811	4.150	0.433	1.500	0.250	0.764
FWJ-500A-600A	1	7.201	2.500	3.465	5.984	4.706	0.562	2.000	0.375	1.201
FWJ-800A-2000A	1	6.811	3.500	3.312	5.472	4.962	0.625	2.750	0.500	0.880

Dimension in inches.
1mm = 0.0394" 1" = 25.4mm

The only controlled copy of this BIF document is the electronic read-only version located on the Bussmann Network Drive. All other copies of this document are by definition uncontrolled. This bulletin is intended to clearly present comprehensive product data and provide technical information that will help the end user with design applications. Bussmann reserves the right, without notice, to change design or construction of any products and to discontinue or limit distribution of any products. Bussmann also reserves the right to change or update, without notice, any technical information contained in this bulletin. Once a product has been selected, it should be tested by the user in all possible applications.