



Chipsmall Limited consists of a professional team with an average of over 10 year of expertise in the distribution of electronic components. Based in Hongkong, we have already established firm and mutual-benefit business relationships with customers from,Europe,America and south Asia,supplying obsolete and hard-to-find components to meet their specific needs.

With the principle of “Quality Parts,Customers Priority,Honest Operation,and Considerate Service”,our business mainly focus on the distribution of electronic components. Line cards we deal with include Microchip,ALPS,ROHM,Xilinx,Pulse,ON,Everlight and Freescale. Main products comprise IC,Modules,Potentiometer,IC Socket,Relay,Connector.Our parts cover such applications as commercial,industrial, and automotives areas.

We are looking forward to setting up business relationship with you and hope to provide you with the best service and solution. Let us make a better world for our industry!



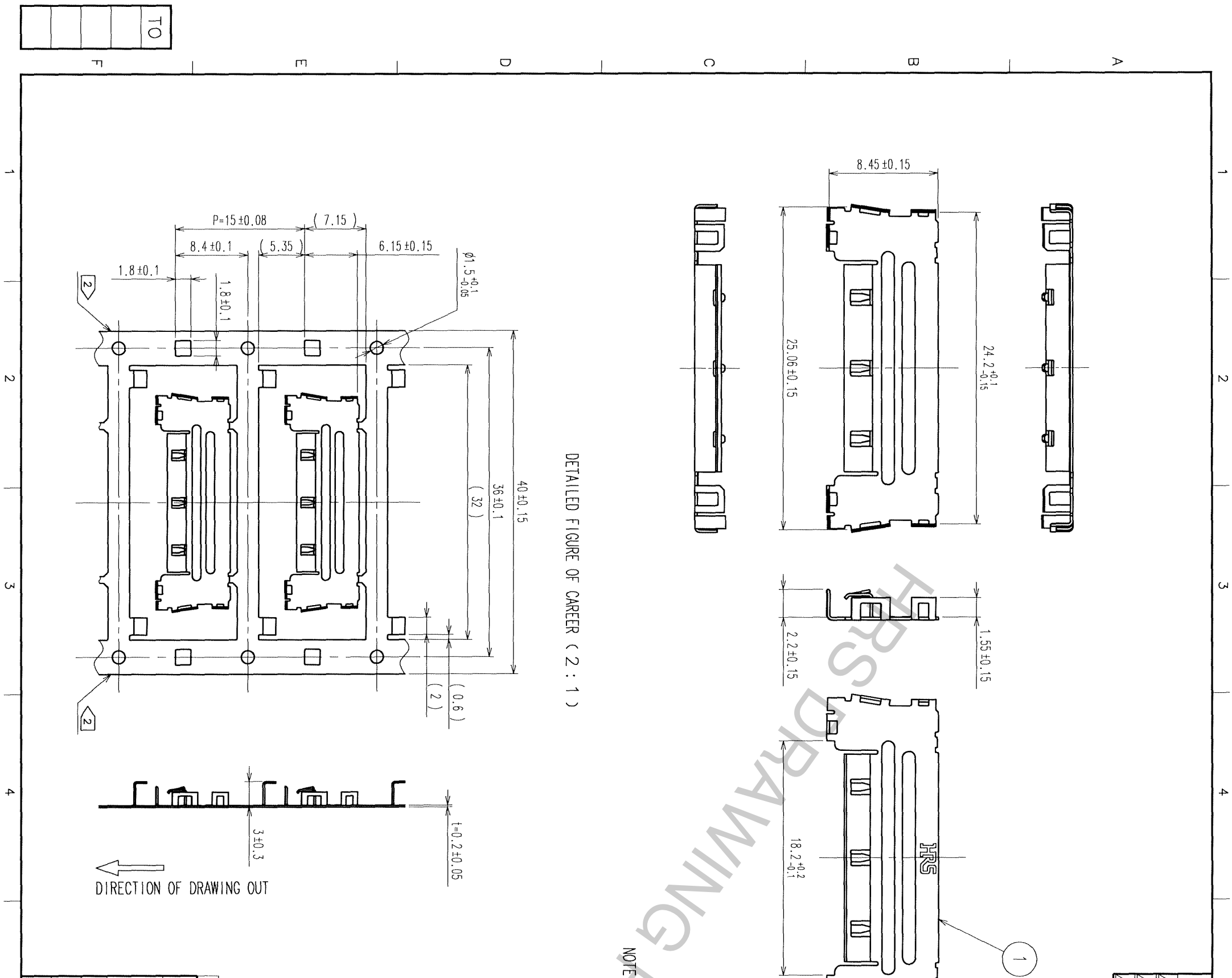
Contact us

Tel: +86-755-8981 8866 Fax: +86-755-8427 6832

Email & Skype: info@chipsmall.com Web: www.chipsmall.com

Address: A1208, Overseas Decoration Building, #122 Zhenhua RD., Futian, Shenzhen, China





DETAILED FIGURE OF CARRIER (2 : 1)

NOTE 1. MANUFACTURING PROCESS COULD LEAVE SCRATCH AND/OR PUNCH MARKS HAVING NO AFFECT ON THE PRODUCT PERFORMANCE.

2. SIDE CUT CAN BE PROVIDED TO PREVENT CARRIER CURVE.

3. 2500 PIECES PER REEL.

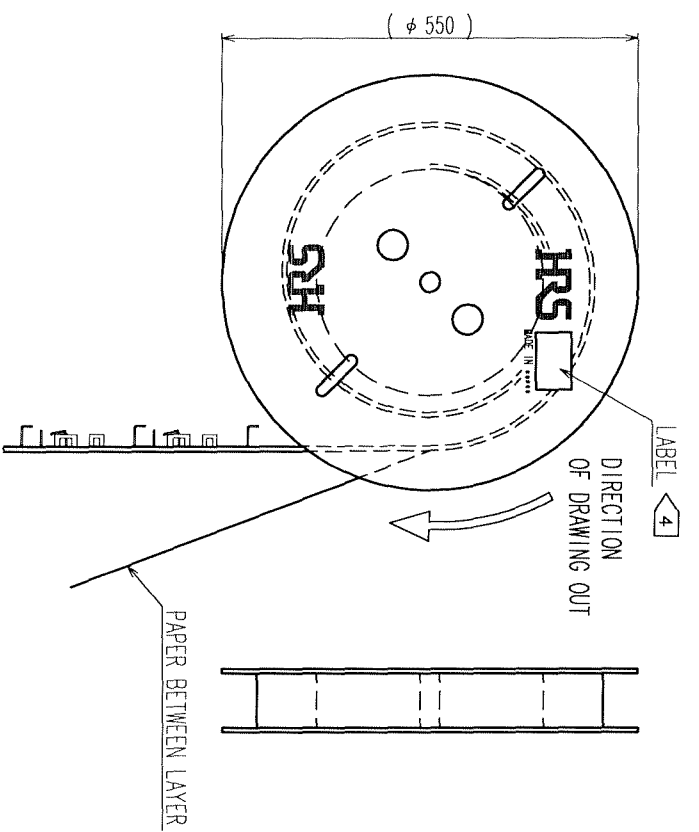
4. LABEL AS SHOWN BELOW IS INDICATED.

CODE No.	品名コード	CL575-3312-3	INSPECTION 検査
PART NO.	品名	FX16-31P-GND	
QTY	数量	2,500 PCS	
PECULIAR	仕様		
Lot No	Lot No		
SPLICE	継ぎ目		

5. DIMENSION IN () ARE FOR REFERENCE.
 6. THIS IS A COMPONENT FOR SEPARATELY AVAILABLE PRODUCT: FX16-31P-0.5FC OR FX16-31P-0.5SD. WHEN MICRO COAXIAL CABLE IS USED FOR THE CABLE, MAKE SURE TO USE WITH THE SPECIFIED COMBINATION.

COUNT	DESCRIPTION OF REVISIONS	BY	CHKD	DATE	COUNT	DESCRIPTION OF REVISIONS	BY	CHKD	DATE

DETAILED FIGURE OF REEL (FREE)



NO.	MATERIAL	FINISH, REMARKS	1	STAINLESS	
CODE NO. (OLD)	CL		NO.	MATERIAL	FINISH, REMARKS
DRAWING NO.	EDC3-157684	DRAWN	DESIGNED	CHECKED	APPROVED
SCALE	FREE	K. SHIBUYA	K. Shibuya	08.01.25	H. Okawa
UNITS	MM	08.01.24	08.01.25	08.01.25	
DRAWING NO.	EDC3-157684	PART NO.	FX16-31P-GND		
CODE NO.	HRS	CL575-3312-3			