



Chipsmall Limited consists of a professional team with an average of over 10 year of expertise in the distribution of electronic components. Based in Hongkong, we have already established firm and mutual-benefit business relationships with customers from,Europe,America and south Asia,supplying obsolete and hard-to-find components to meet their specific needs.

With the principle of “Quality Parts,Customers Priority,Honest Operation,and Considerate Service”,our business mainly focus on the distribution of electronic components. Line cards we deal with include Microchip,ALPS,ROHM,Xilinx,Pulse,ON,Everlight and Freescale. Main products comprise IC,Modules,Potentiometer,IC Socket,Relay,Connector.Our parts cover such applications as commercial,industrial, and automotives areas.

We are looking forward to setting up business relationship with you and hope to provide you with the best service and solution. Let us make a better world for our industry!



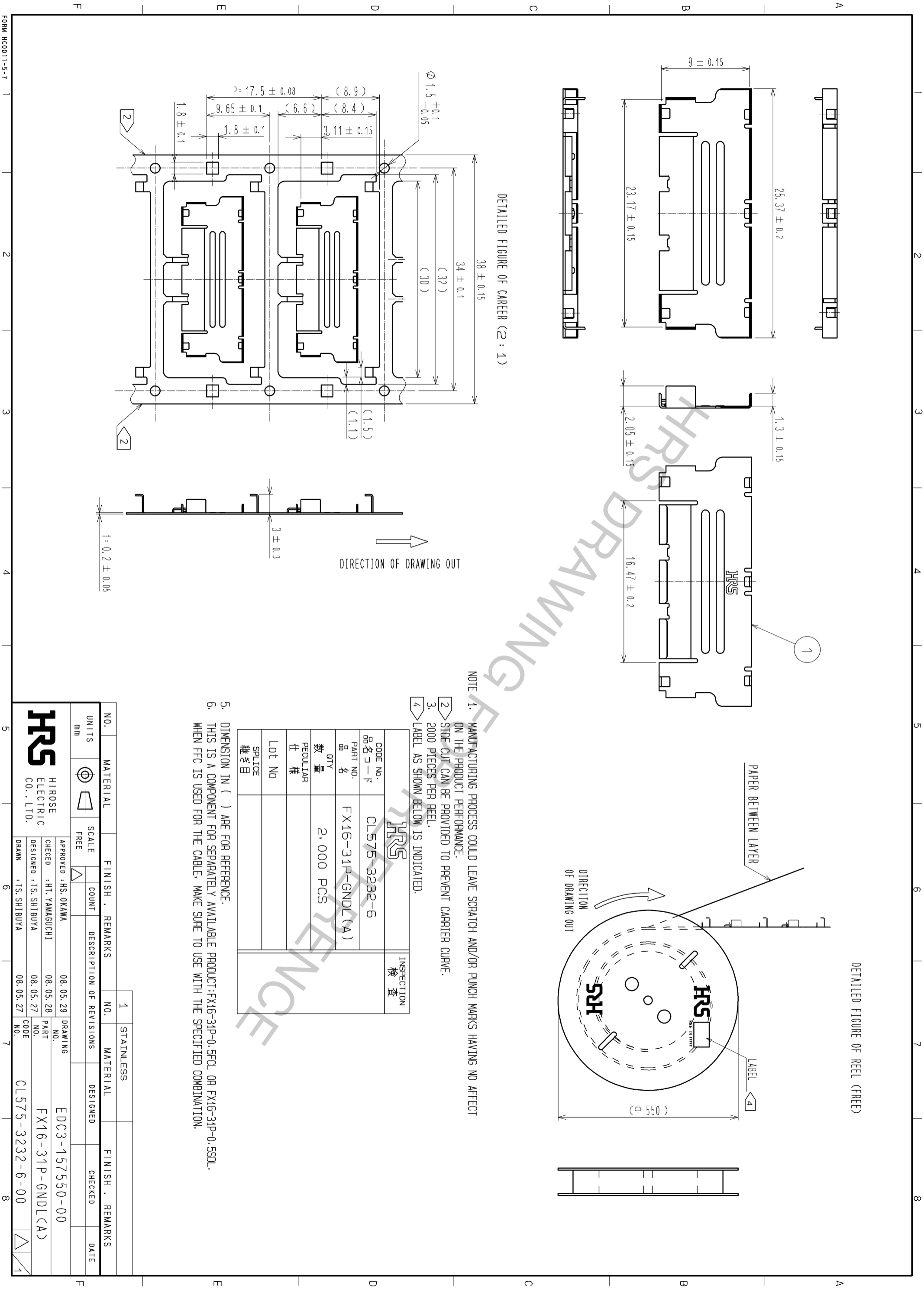
Contact us

Tel: +86-755-8981 8866 Fax: +86-755-8427 6832

Email & Skype: info@chipsmall.com Web: www.chipsmall.com

Address: A1208, Overseas Decoration Building, #122 Zhenhua RD., Futian, Shenzhen, China





DETAILED FIGURE OF CARRIER (2 : 1)

DETAILED FIGURE OF REEL (FREE)

NOTE 1. MANUFACTURING PROCESS COULD LEAVE SCRATCH AND/OR PUNCH MARKS HAVING NO AFFECT ON THE PRODUCT PERFORMANCE.

- 2 SIDE CUT CAN BE PROVIDED TO PREVENT CARRIER CURVE.
- 3. 2000 PIECES PER REEL.
- 4 LABEL AS SHOWN BELOW IS INDICATED.

- 5. DIMENSION IN () ARE FOR REFERENCE.
- 6. THIS IS A COMPONENT FOR SEPARATELY AVAILABLE PRODUCT:FX16-31P-0.5FCL OR FX16-31P-0.5SDL. WHEN FCC IS USED FOR THE CABLE. MAKE SURE TO USE WITH THE SPECIFIED COMBINATION.

HRS		INSPECTION 検査
CODE No. 品名コード	CL575-3232-6	
PART NO. 品名	FX16-31P-GNDL(A)	
QTY 数量	2,000 PCS	
PECULIAR 仕様		
Lot No		
SPLICE 継ぎ目		

NO.	MATERIAL	FINISH	REMARKS	NO.	MATERIAL	FINISH	REMARKS
1	STAINLESS						

UNITS mm	SCALE FREE	COUNT	DESCRIPTION OF REVISIONS	DESIGNED	CHECKED	DATE

APPROVED : HS. OKAWA	08.05.29	DRAWING NO.	EDC3-157550-00
CHECKED : HT. YAMAGUCHI	08.05.28	PART NO.	FX16-31P-GNDL(A)
DESIGNED : TS. SHIBUYA	08.05.27	CODE NO.	CL575-3232-6-00
DRAWN : TS. SHIBUYA	08.05.27		