



Chipsmall Limited consists of a professional team with an average of over 10 year of expertise in the distribution of electronic components. Based in Hongkong, we have already established firm and mutual-benefit business relationships with customers from,Europe,America and south Asia,supplying obsolete and hard-to-find components to meet their specific needs.

With the principle of “Quality Parts,Customers Priority,Honest Operation,and Considerate Service”,our business mainly focus on the distribution of electronic components. Line cards we deal with include Microchip,ALPS,ROHM,Xilinx,Pulse,ON,Everlight and Freescale. Main products comprise IC,Modules,Potentiometer,IC Socket,Relay,Connector.Our parts cover such applications as commercial,industrial, and automotives areas.

We are looking forward to setting up business relationship with you and hope to provide you with the best service and solution. Let us make a better world for our industry!



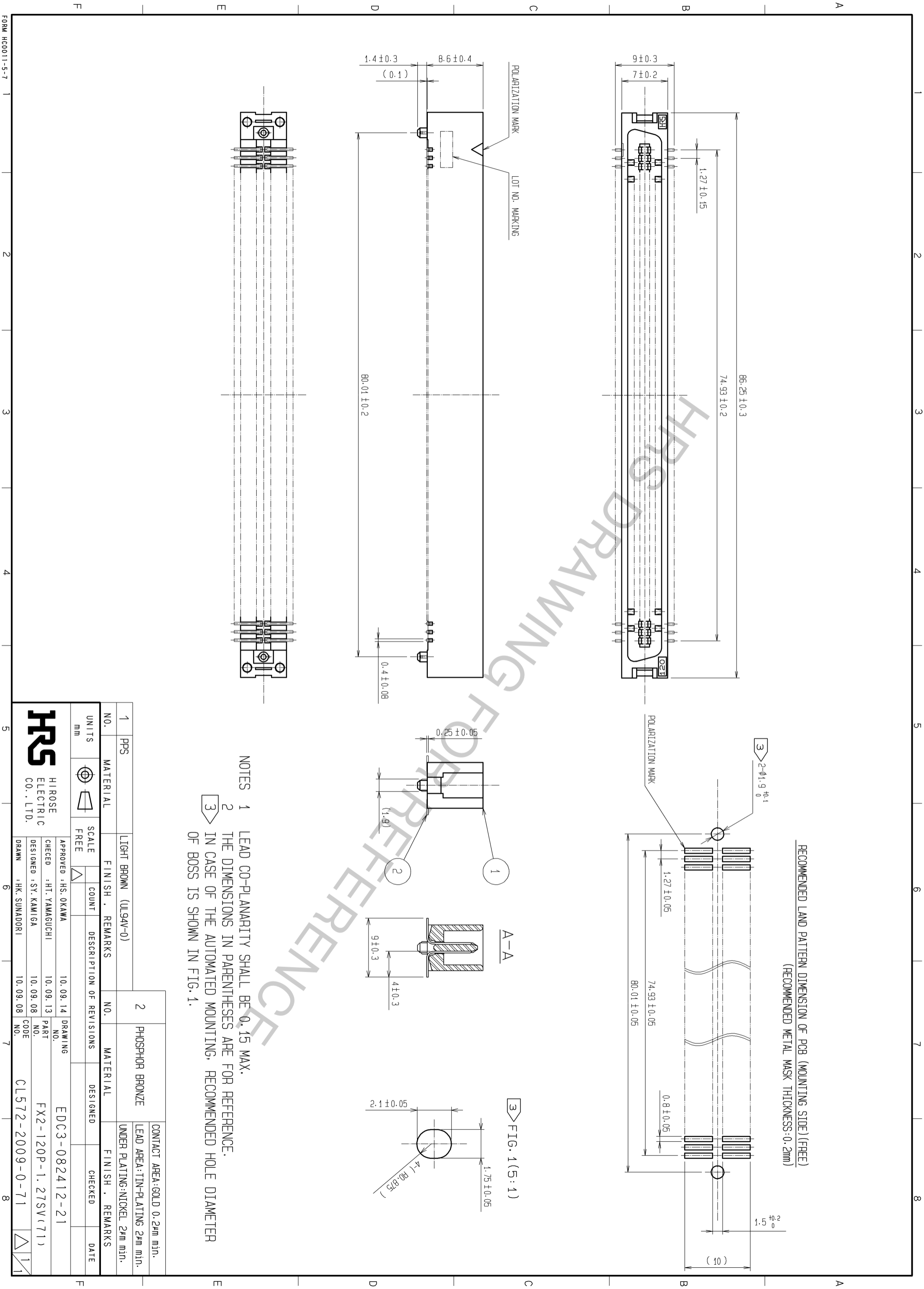
Contact us

Tel: +86-755-8981 8866 Fax: +86-755-8427 6832

Email & Skype: info@chipsmall.com Web: www.chipsmall.com

Address: A1208, Overseas Decoration Building, #122 Zhenhua RD., Futian, Shenzhen, China





NOTES
 1 LEAD CO-PLANARITY SHALL BE 0.15 MAX.
 2 THE DIMENSIONS IN PARENTHESSES ARE FOR REFERENCE.
 3 IN CASE OF THE AUTOMATED MOUNTING, RECOMMENDED HOLE DIAMETER OF BOSS IS SHOWN IN FIG. 1.

1	PPS	MATERIAL	FINISH . REMARKS	NO.	MATERIAL	FINISH . REMARKS
		LIGHT BROWN (UL94V-0)		2	PHOSPHOR BRONZE	CONTACT AREA: GOLD 0.2µm min. LEAD AREA: TIN-PLATING 2µm min. UNDER PLATING: NICKEL 2µm min.
		SCALE	COUNT	DESCRIPTION OF REVISIONS	DESIGNED	CHECKED
		FREE				
		UNITS		DATE		
		mm				
APPROVED : HS. OKAWA CHECKED : HT. YAMAGUCHI DESIGNED : SY. KAMIGA DRAWN : HK. SUNADORI						
10.09.14 DRAWING NO. EDC3-082412-21 10.09.13 PART NO. FX2-120P-1.27SV(71) 10.09.08 CODE NO. CL572-2009-0-71						