



Chipsmall Limited consists of a professional team with an average of over 10 year of expertise in the distribution of electronic components. Based in Hongkong, we have already established firm and mutual-benefit business relationships with customers from,Europe,America and south Asia,supplying obsolete and hard-to-find components to meet their specific needs.

With the principle of “Quality Parts,Customers Priority,Honest Operation,and Considerate Service”,our business mainly focus on the distribution of electronic components. Line cards we deal with include Microchip,ALPS,ROHM,Xilinx,Pulse,ON,Everlight and Freescale. Main products comprise IC,Modules,Potentiometer,IC Socket,Relay,Connector.Our parts cover such applications as commercial,industrial, and automotives areas.

We are looking forward to setting up business relationship with you and hope to provide you with the best service and solution. Let us make a better world for our industry!



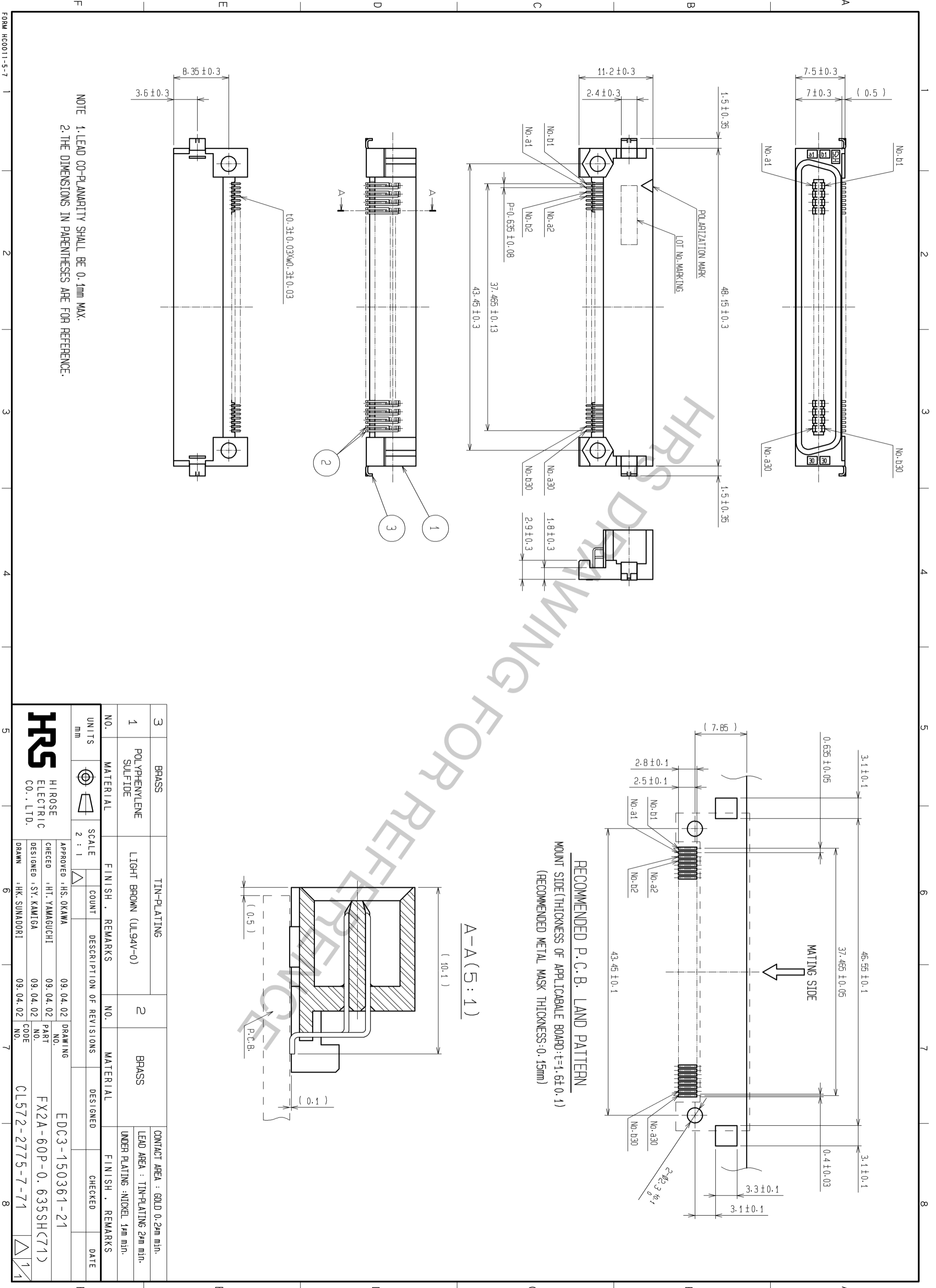
## Contact us

Tel: +86-755-8981 8866 Fax: +86-755-8427 6832

Email & Skype: info@chipsmall.com Web: www.chipsmall.com

Address: A1208, Overseas Decoration Building, #122 Zhenhua RD., Futian, Shenzhen, China





NOTE 1. LEAD CO-PLANARITY SHALL BE 0.1mm MAX.  
2. THE DIMENSIONS IN PARENTHESES ARE FOR REFERENCE.

3	BRASS	TIN-PLATING	2	BRASS	CONTACT AREA : GOLD 0.2µm min.
1	POLYPHENYLENE SULFIDE	LIGHT BROWN (UL94V-0)			LEAD AREA : TIN-PLATING 2µm min.
	MATERIAL	FINISH . REMARKS	NO.	MATERIAL	UNDER PLATING : NICKEL 1µm min.
	UNITS	SCALE	COUNT	DESCRIPTION OF REVISIONS	FINISH . REMARKS
	mm	2 : 1			
APPROVED : HS. OKAWA		09.04.02		DRAWING NO.	
CHECKED : HT. YAMAGUCHI		09.04.02		PART NO.	
DESIGNED : SY. KAMIGA		09.04.02		CODE NO.	
DRAWN : HK. SUNADORI		09.04.02		CL572-2775-7-71	
HRS		HIROSE ELECTRIC CO., LTD.		EDC3-150361-21	
				FX2A-60P-0.635SH(71)	
				CL572-2775-7-71	