



Chipsmall Limited consists of a professional team with an average of over 10 year of expertise in the distribution of electronic components. Based in Hongkong, we have already established firm and mutual-benefit business relationships with customers from,Europe,America and south Asia,supplying obsolete and hard-to-find components to meet their specific needs.

With the principle of "Quality Parts,Customers Priority,Honest Operation,and Considerate Service",our business mainly focus on the distribution of electronic components. Line cards we deal with include Microchip,ALPS,ROHM,Xilinx,Pulse,ON,Everlight and Freescale. Main products comprise IC,Modules,Potentiometer,IC Socket,Relay,Connector.Our parts cover such applications as commercial,industrial, and automotives areas.

We are looking forward to setting up business relationship with you and hope to provide you with the best service and solution. Let us make a better world for our industry!



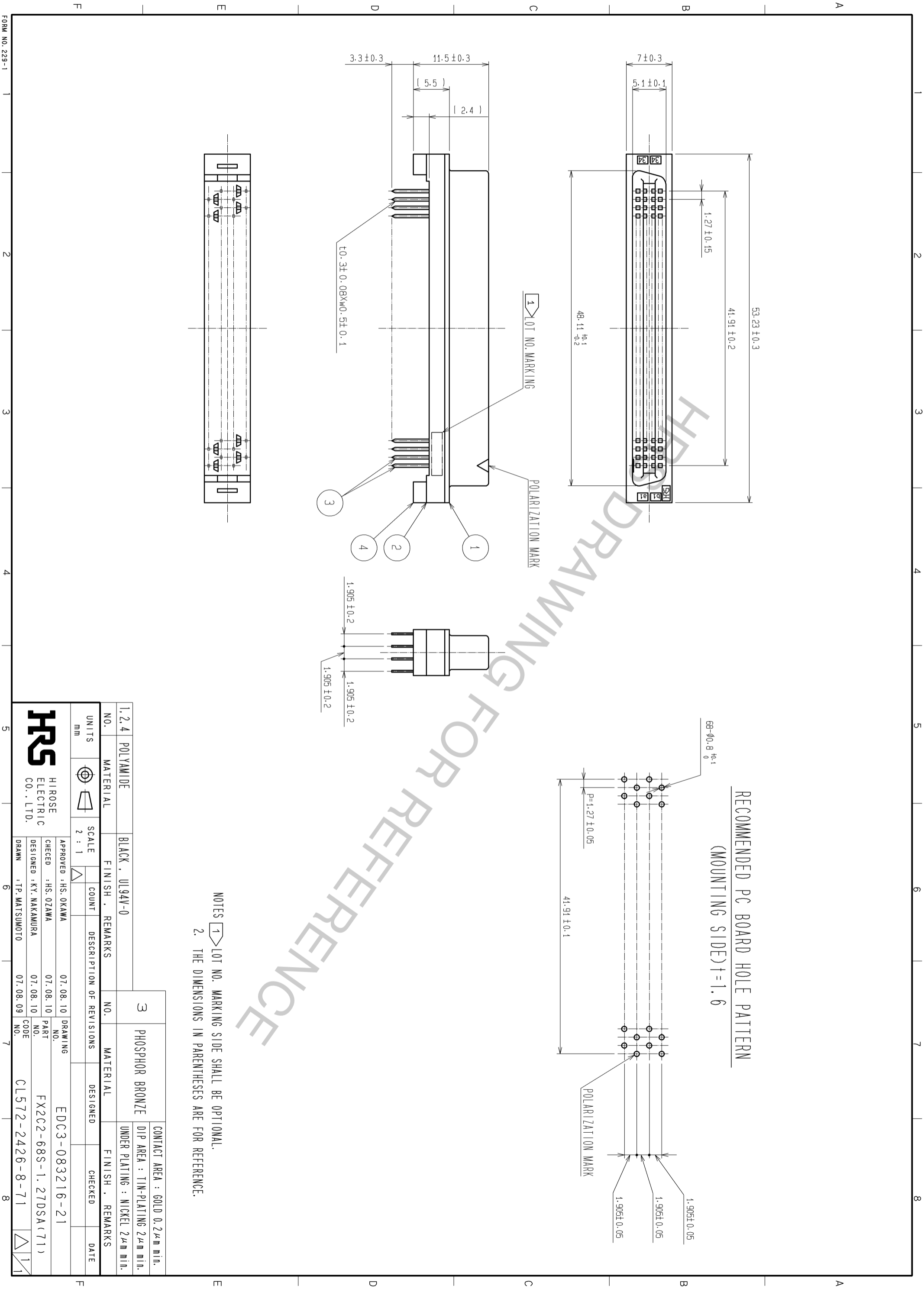
Contact us

Tel: +86-755-8981 8866 Fax: +86-755-8427 6832

Email & Skype: info@chipsmall.com Web: www.chipsmall.com

Address: A1208, Overseas Decoration Building, #122 Zhenhua RD., Futian, Shenzhen, China





RECOMMENDED PC BOARD HOLE PATTERN
(MOUNTING SIDE) t=1.6

NOTES
 1. LOT NO. MARKING SIDE SHALL BE OPTIONAL.
 2. THE DIMENSIONS IN PARENTHESES ARE FOR REFERENCE.

NO.	1, 2, 4	MATERIAL	POLYAMIDE	FINISH	BLACK, UL94V-0	REMARKS	
UNITS	mm	SCALE	2 : 1	COUNT		DESCRIPTION OF REVISIONS	
NO.	3	MATERIAL	PHOSPHOR BRONZE	FINISH		REMARKS	
CONTACT AREA	GOLD 0.2μm min.						
DIP AREA	TIN-PLATING 2μm min.						
UNDER PLATING	NICKEL 2μm min.						
APPROVED	HS. OKAWA	07.08.10	DRAWING NO.	EDC3-083216-21	CHECKED	HS. OKAWA	07.08.10
CHECKED	HS. OKAWA	07.08.10	PART NO.	FX2C2-68S-1.27DSA(71)	DESIGNED	KY. NAKAMURA	07.08.10
DESIGNED	KY. NAKAMURA	07.08.10	CODE NO.	CL572-2426-8-71	DRAWN	TP. MATSUMOTO	07.08.09
DRAWN	TP. MATSUMOTO	07.08.09	NO.				