



Chipsmall Limited consists of a professional team with an average of over 10 year of expertise in the distribution of electronic components. Based in Hongkong, we have already established firm and mutual-benefit business relationships with customers from,Europe,America and south Asia,supplying obsolete and hard-to-find components to meet their specific needs.

With the principle of “Quality Parts,Customers Priority,Honest Operation,and Considerate Service”,our business mainly focus on the distribution of electronic components. Line cards we deal with include Microchip,ALPS,ROHM,Xilinx,Pulse,ON,Everlight and Freescale. Main products comprise IC,Modules,Potentiometer,IC Socket,Relay,Connector.Our parts cover such applications as commercial,industrial, and automotives areas.

We are looking forward to setting up business relationship with you and hope to provide you with the best service and solution. Let us make a better world for our industry!



## Contact us

Tel: +86-755-8981 8866 Fax: +86-755-8427 6832

Email & Skype: [info@chipsmall.com](mailto:info@chipsmall.com) Web: [www.chipsmall.com](http://www.chipsmall.com)

Address: A1208, Overseas Decoration Building, #122 Zhenhua RD., Futian, Shenzhen, China



1

2

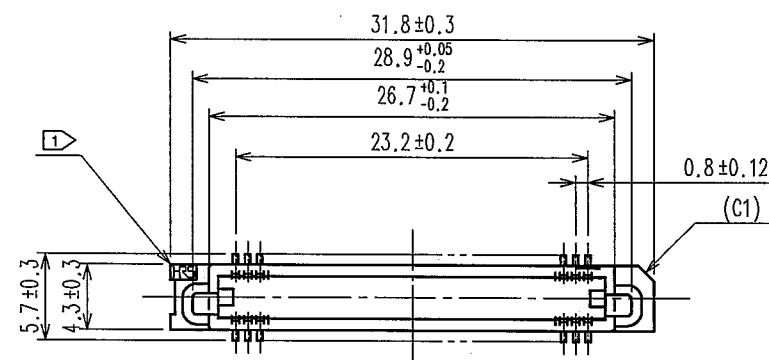
3

Apr.1,2017 Copyright 2017 HIROSE ELECTRIC CO., LTD. All Rights Reserved. 6

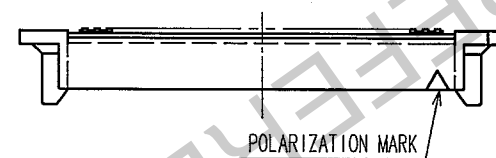
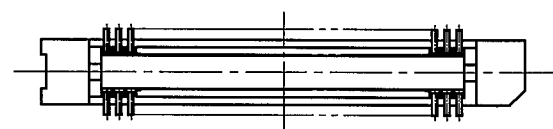
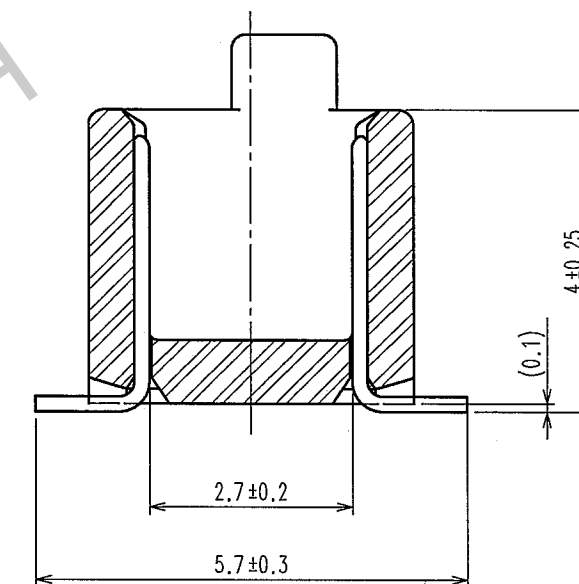
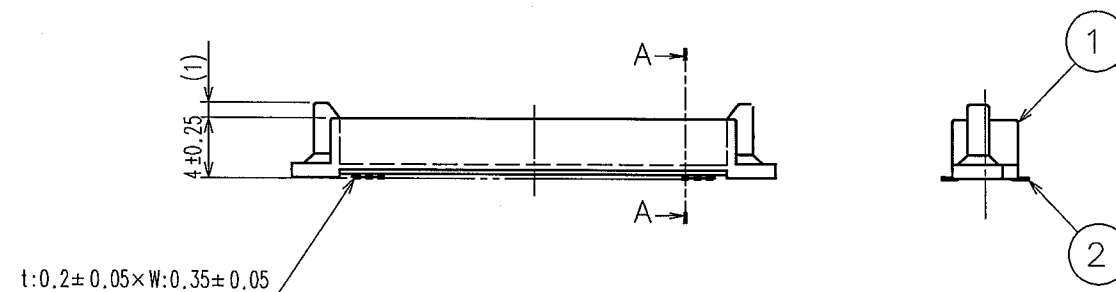
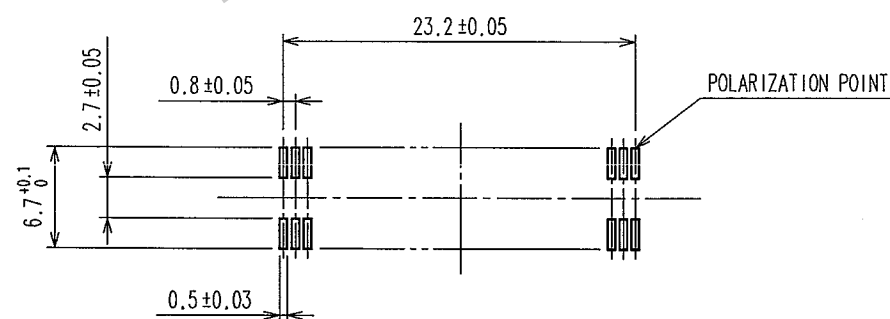
7

8

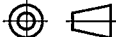

| COUNT | DESCRIPTION OF REVISIONS | BY | CHKD | DATE | COUNT | DESCRIPTION OF REVISIONS | BY | CHKD | DATE |
|-------|--------------------------|----|------|------|-------|--------------------------|----|------|------|
| △     |                          |    |      | ..   | △     |                          |    |      | ..   |
| △     |                          |    |      | ..   | △     |                          |    |      | ..   |
| △     |                          |    |      | ..   | △     |                          |    |      | ..   |



A-A(10:1)

RECOMMENDED P.C.B. LAND PATTERN  
(MOUNT SIDE)

- NOTE 1 HRS MARK SHALL BE OPTIONAL.  
2 LEAD CO-PLANARITY SHALL BE 0.1mm MAX.  
3 THE DIMENSIONS IN PARENTHESES ARE FOR REFERENCE.  
4 EMBOSSED CARRIER TAPE PACKAGING SHALL BE APPLIED FOR THIS PRODUCT.  
5 FOR MODIFICATION,ETC,PREVENTIVE HOLE FOR SINK MARK MAY BE ADDED ACCORDING TO CIRCUMSTANCES.

|   |  |  |  |  |                       |  |                 |                    |                                 |                     |  |           |                 |           |  |                                   |  |
|---|--|--|--|--|-----------------------|--|-----------------|--------------------|---------------------------------|---------------------|--|-----------|-----------------|-----------|--|-----------------------------------|--|
|   |  |  |  |  | 2                     |  | PHOSPHOR BRONZE |                    | CONTACT AREA : GOLD 0.1μ m min. |                     |  |           |                 |           |  |                                   |  |
|   |  |  |  |  |                       |  |                 |                    | LEAD AREA : GOLD FLASH          |                     |  |           |                 |           |  |                                   |  |
| 1   |  |  |  |  | POLYPHENYLENE SULFIDE |  |                 |                    |                                 | LIGHT BROWN UL94V-0 |  |           |                 |           |  | UNDER PLATING : NICKEL 1.5μ m min |  |
| NO.   |  | MATERIAL   |  |  | FINISH, REMARKS       |  |                 | NO.                |                                 | MATERIAL            |  |           | FINISH, REMARKS |           |  |                                   |  |
| CODE NO. (OLD)  |  |  |  |  |                       |  |                 | DRAWN              |                                 | DESIGNED            |  | CHECKED   |                 | APPROVED  |  | RELEASED                          |  |
|   |  |  |  |  |                       |  |                 | Y.AOYAGI           |                                 | J. Noda             |  | K. Ogawa  |                 | H. Okawa  |  |                                   |  |
|   |  |  |  |  |                       |  |                 | '05.09.16          |                                 | '05-09-26           |  | '05-09-26 |                 | '05.09.27 |  | . .                               |  |
|  |  | DRAWING NO.  |  |  |                       |  |                 | PART NO.           |                                 |                     |  |           |                 |           |  |                                   |  |
| SCALE   |  | EDC3-071324-22   |  |  |                       |  |                 | FX6A-60P-0.8SV(92) |                                 |                     |  |           |                 |           |  |                                   |  |
| 2 : 1   |  |  HIROSE ELECTRIC CO., LTD |  |  |                       |  |                 | CODE NO.           |                                 |                     |  |           |                 |           |  | 1/                                |  |
| UNITS   |  |  |  |  |                       |  |                 | CL576-0205-3-92    |                                 |                     |  |           |                 |           |  |                                   |  |
| mm  |  |  |  |  |                       |  |                 |                    |                                 |                     |  |           |                 |           |  |                                   |  |

TO

F

| COUNT | DESCRIPTION OF REVISIONS | BY | CHKD | DATE | COUNT | DESCRIPTION OF REVISIONS | BY | CHKD | DATE |
|-------|--------------------------|----|------|------|-------|--------------------------|----|------|------|
| △     |                          |    |      |      | △     |                          |    |      |      |
| △     |                          |    |      |      | △     |                          |    |      |      |
| △     |                          |    |      |      | △     |                          |    |      |      |

A

B

C

D

E

F

A

B

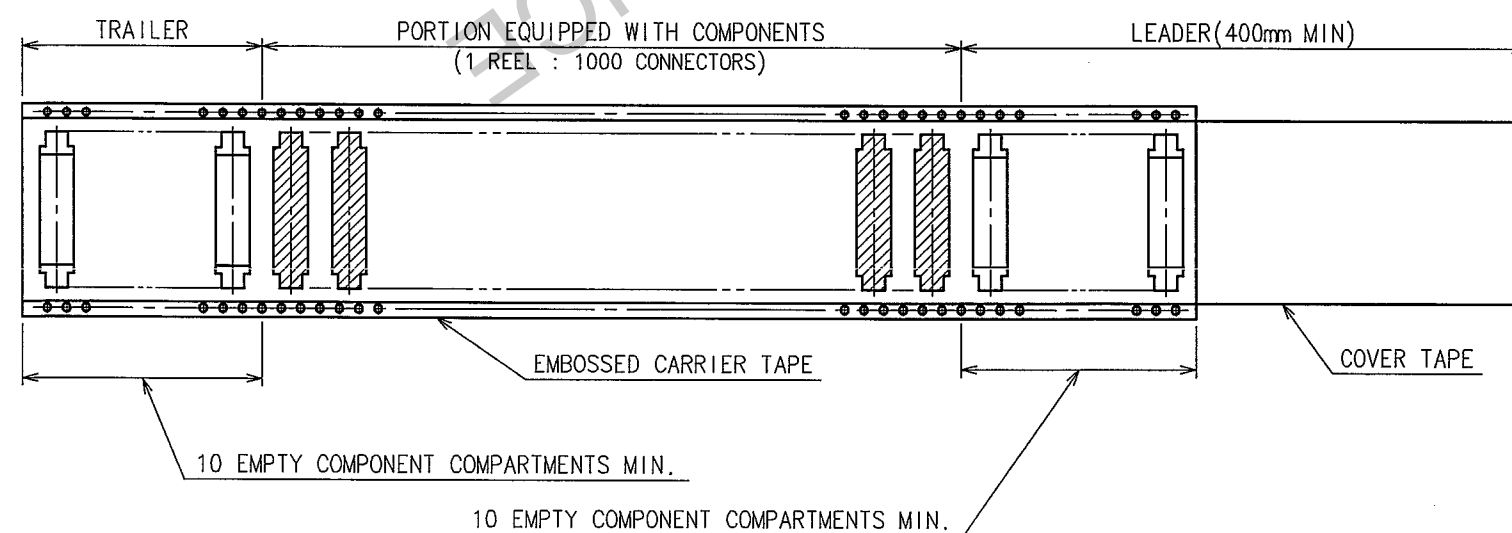
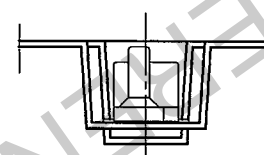
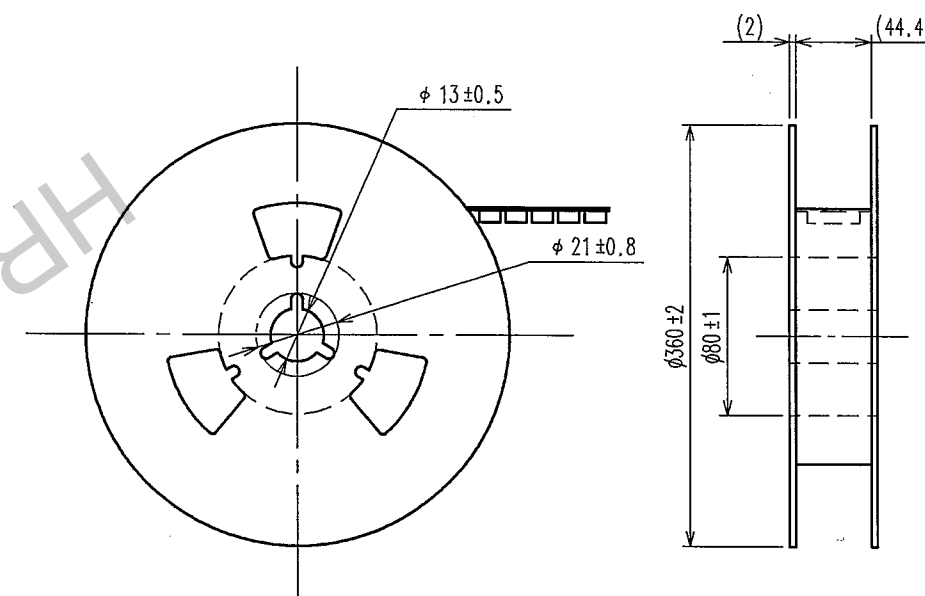
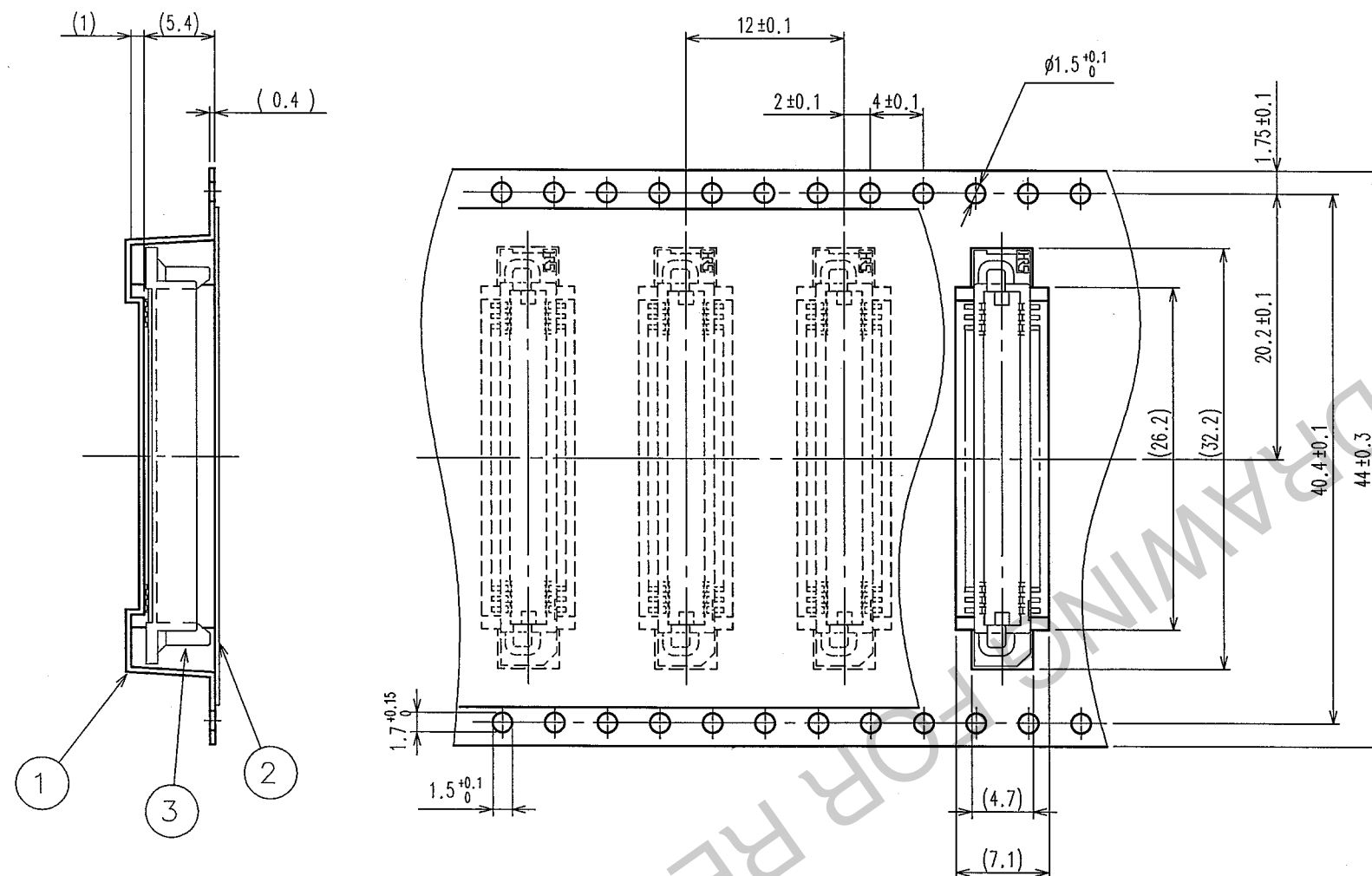
C

D

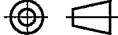

E

F

## STYLE AND DIMENSIONS OF REEL (FREE)



- NOTE 1 THE DIMENSIONS IN PARENTHESES ARE FOR REFERENCE.  
2 1REEL:1000 CONNECTORS.

|   |  |                       |                    |           |                 |          |
|---|--|-----------------------|--------------------|-----------|-----------------|----------|
| 2   | POLYESTER  | COVER TAPE            |                    |           |                 |          |
| 1   | POLYSTYRENE  | EMBOSSED CARRIER TAPE | 3                  |           | (CONNECTOR)     |          |
| NO.   | MATERIAL   | FINISH, REMARKS       | NO.                | MATERIAL  | FINISH, REMARKS |          |
| CODE NO. (OLD)  |  | DRAWN                 | DESIGNED           | CHECKED   | APPROVED        | RELEASED |
| DRAWING FOR PACKING   |  | Y. AOYAGI             | J. Mada            | K. Ogawa  | H. Okawa        |          |
|   |  | '05.09.16             | '05.09.26          | '05.09.26 | '05.09.27       | .        |
|  | DRAWING NO.  |                       | PART NO.           |           |                 |          |
|   | EDC3-071324-22   |                       | FX6A-60P-0.8SV(92) |           |                 |          |
| SCALE   |  HIROSE ELECTRIC CO., LTD |                       | CODE NO.           |           |                 | 2/       |
| 2 : 1   |  |                       |                    |           |                 |          |
| UNITS   |  |                       | CL576-0205-3-92    |           |                 |          |
| mm  |  |                       |                    |           |                 |          |

TO