



Chipsmall Limited consists of a professional team with an average of over 10 year of expertise in the distribution of electronic components. Based in Hongkong, we have already established firm and mutual-benefit business relationships with customers from,Europe,America and south Asia,supplying obsolete and hard-to-find components to meet their specific needs.

With the principle of “Quality Parts,Customers Priority,Honest Operation,and Considerate Service”,our business mainly focus on the distribution of electronic components. Line cards we deal with include Microchip,ALPS,ROHM,Xilinx,Pulse,ON,Everlight and Freescale. Main products comprise IC,Modules,Potentiometer,IC Socket,Relay,Connector.Our parts cover such applications as commercial,industrial, and automotives areas.

We are looking forward to setting up business relationship with you and hope to provide you with the best service and solution. Let us make a better world for our industry!



Contact us

Tel: +86-755-8981 8866 Fax: +86-755-8427 6832

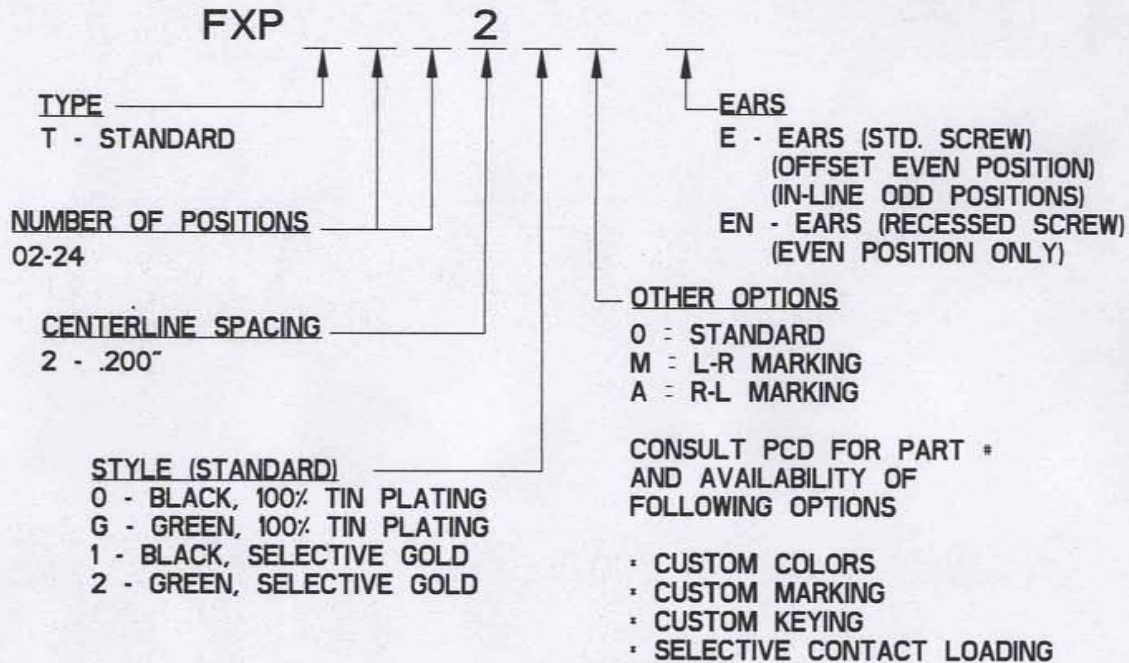
Email & Skype: info@chipsmall.com Web: www.chipsmall.com

Address: A1208, Overseas Decoration Building, #122 Zhenhua RD., Futian, Shenzhen, China



REV	ECN	APP'D
-	3750	JEC 5/3/99
A	3893	JEC 1/6/00
B	3677	
C	6031	PJC 3-06-07
D	6138	PJC 10-22-07
E	6188	PJC 2-26-08

FXP SERIES PART NUMBERING SCHEME



# POS	DIM "A"
2	.40
3	.60
4	.80
5	1.00
6	1.20
7	1.40
8	1.60
9	1.80
10	2.00
11	2.20
12	2.40
13	2.60
14	2.80
15	3.00
16	3.20
17	3.40
18	3.60
19	3.80
20	4.00
21	4.20
22	4.40
23	4.60
24	4.80



RATINGS

CURRENT - 15A
VOLTAGE - 300V
U.L. FILE NO. E83421



RATINGS

CURRENT - 15A
VOLTAGE - 300V
CSA FILE NO. LR69703

DIN VDE 0627:1986
DIN VDE 0110-1:1989
EN 60947-1:1991
EN 60947-7-1:1992

CURRENT - PENDING
VOLTAGE - PENDING
TUV FILE NO. PENDING

INSTALLATION RECOMMENDATIONS
WIRE RANGE: AWG #12-26, STRANDED
WIRE STRIP LENGTH: .310"
TIGHTENING TORQUE: 10 IN-LB

MATERIALS:
HOUSING: PPO, UL 94 V-0
CONTACT: COPPER ALLOY
SCREW: STEEL, NICKEL FINISH

MAX OPERATING TEMPERATURE:
105°C

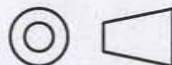
DIMENSIONS

ANSI Y14.5M
UNITS: INCHES
Pro/E FILE

TOLERANCES

.XX ±0.02
.XXX ±0.010
ANGLES ±0.5°

PROJECTION



AMPHENOL PCD
SPECIFICATION DRAWING

ENGR

D. MANTER 03-May-99

CHKD

A. PATRIE 03-May-99

APPD

J. CAHALY 03-May-99

TITLE

**FXP SERIES
PLUG ASSEMBLY**

ORIGINAL

*THIS DOCUMENT CONTAINS
PROPRIETARY INFORMATION WHICH
IS THE CONFIDENTIAL PROPERTY
OF AMPHENOL PCD
PEABODY, MA, USA*

SIZE

A

DWG NO.

FXPTXX200

REV

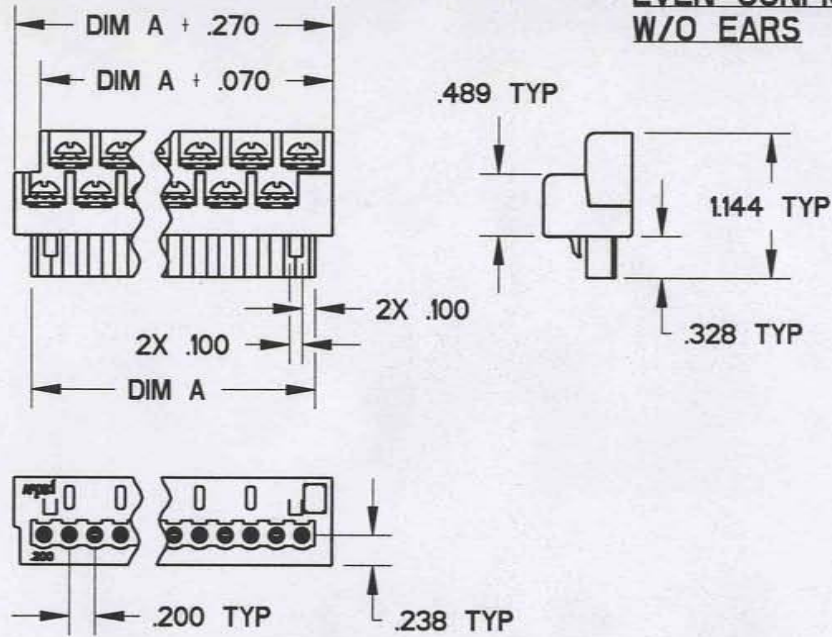
E

CODE: 58982

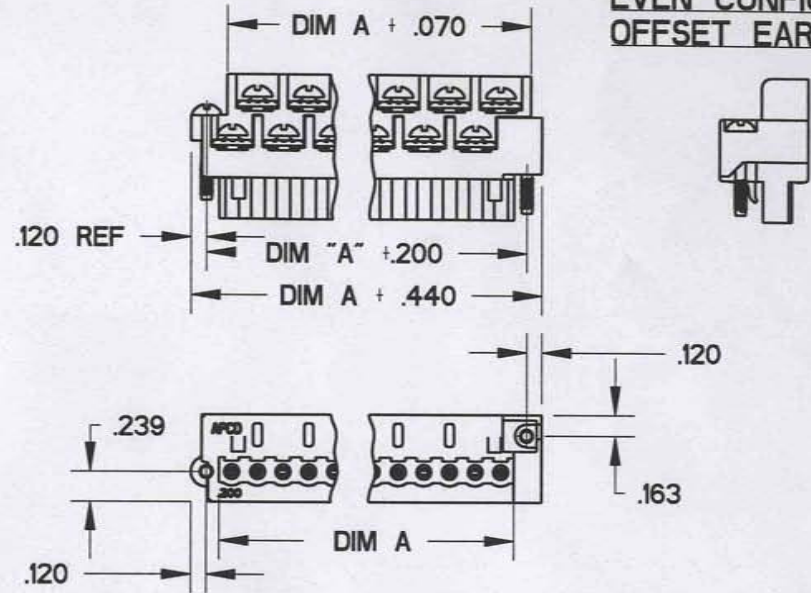
SCALE: NONE

SHEET 1 OF 3

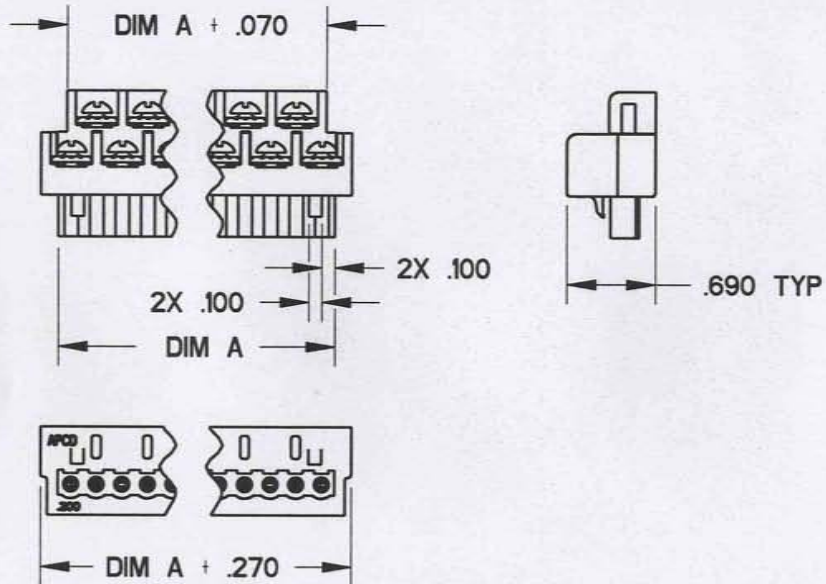
**EVEN CONFIG
W/O EARS**



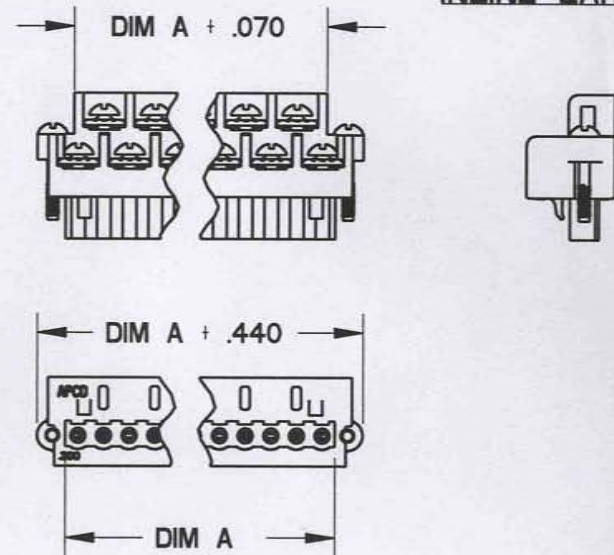
**EVEN CONFIG W/
OFFSET EARS**



**ODD CONFIG
W/O EARS**

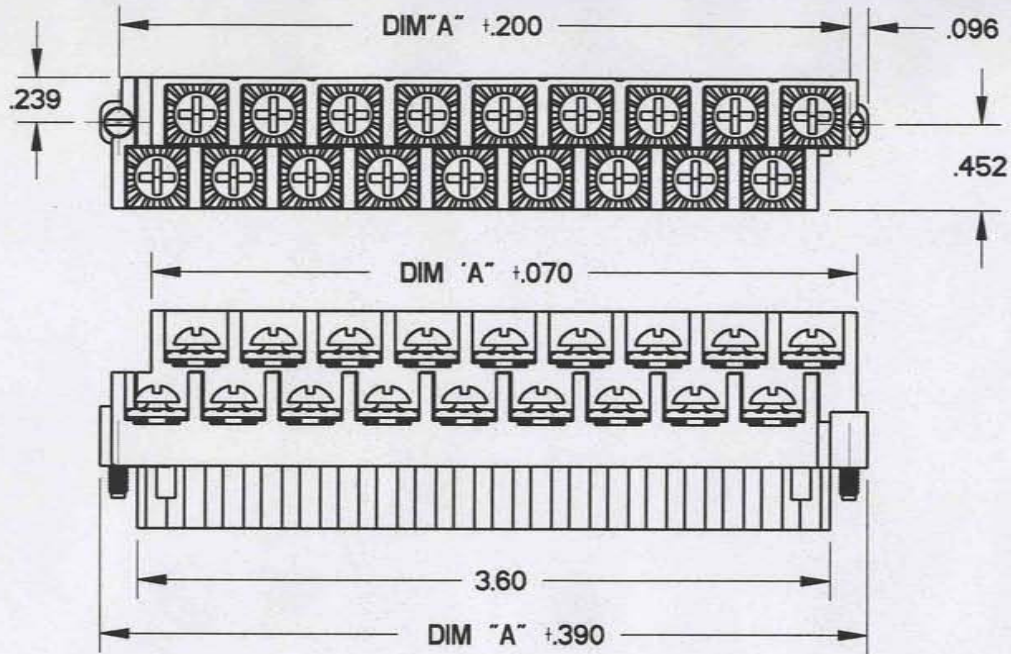


**ODD CONFIG W/
INLINE EARS**

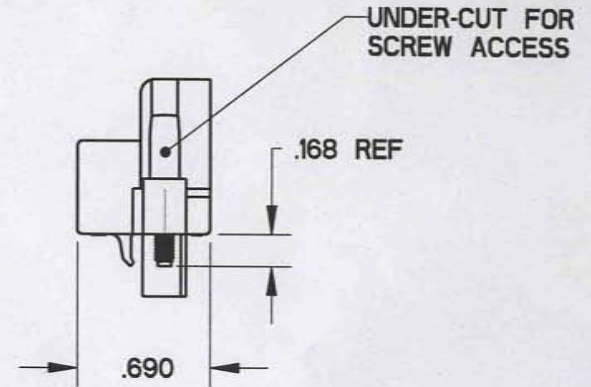


DIM A = NUM OF POS X CL SPACING

SIZE A	DWG NO. FXPTXX200	REV E
CODE: 58982	SCALE: NONE	SHEET 2 OF 3



**EVEN CONFIG W/ IN-LINE EARS
& RECESSED MOUNTING SCREW**



SIZE A	DWG NO. FXPTXX200	REV E
CODE: 58982	SCALE: NONE	SHEET 3 OF 3