



Chipsmall Limited consists of a professional team with an average of over 10 year of expertise in the distribution of electronic components. Based in Hongkong, we have already established firm and mutual-benefit business relationships with customers from,Europe,America and south Asia,supplying obsolete and hard-to-find components to meet their specific needs.

With the principle of "Quality Parts,Customers Priority,Honest Operation,and Considerate Service",our business mainly focus on the distribution of electronic components. Line cards we deal with include Microchip,ALPS,ROHM,Xilinx,Pulse,ON,Everlight and Freescale. Main products comprise IC,Modules,Potentiometer,IC Socket,Relay,Connector.Our parts cover such applications as commercial,industrial, and automotives areas.

We are looking forward to setting up business relationship with you and hope to provide you with the best service and solution. Let us make a better world for our industry!



Contact us

Tel: +86-755-8981 8866 Fax: +86-755-8427 6832

Email & Skype: info@chipsmall.com Web: www.chipsmall.com

Address: A1208, Overseas Decoration Building, #122 Zhenhua RD., Futian, Shenzhen, China

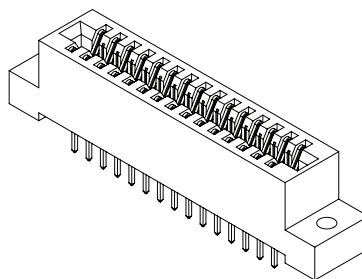




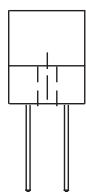
**.125" [3.18 mm] Contact Centers, .610" [15.49 mm] Insulator Height,
Dip Solder/Wire Wrap/Right Angle for .093" [2.36 mm] or .125" [3.18 mm] Mating PCB**

SPECIFICATIONS

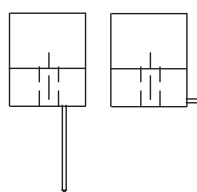
- Accommodates .093" ± .008" [2.36 mm ± 0.20 mm] PC board or .125" ± .008" [3.18 mm ± 0.20 mm] mating PCB
- PBT, PPS or PA9T insulator
- Molded-in key available
- 3 Amps current rating for one contact energized
- 30 milli Ohms maximum at rated current
- UL Flammability Rating: 94V-0



READOUT

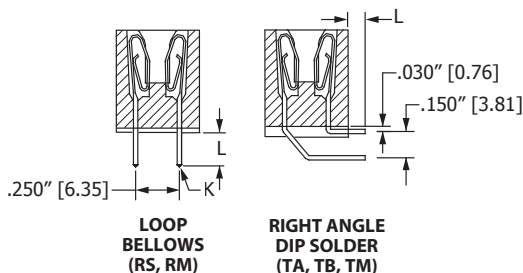


DUAL (D)



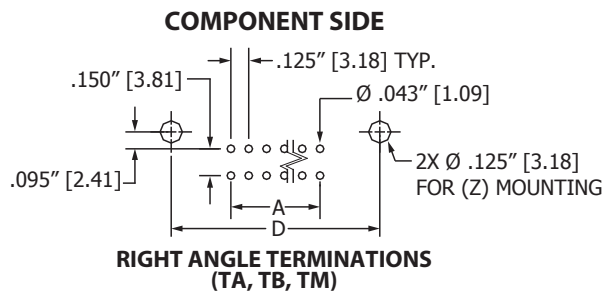
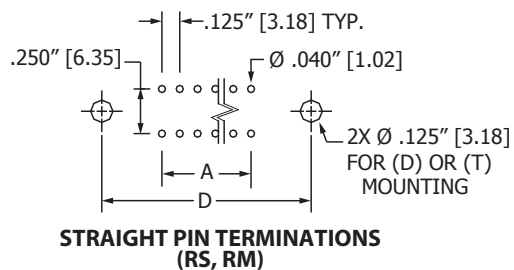
HALF LOADED (H)

TERMINATION TYPE

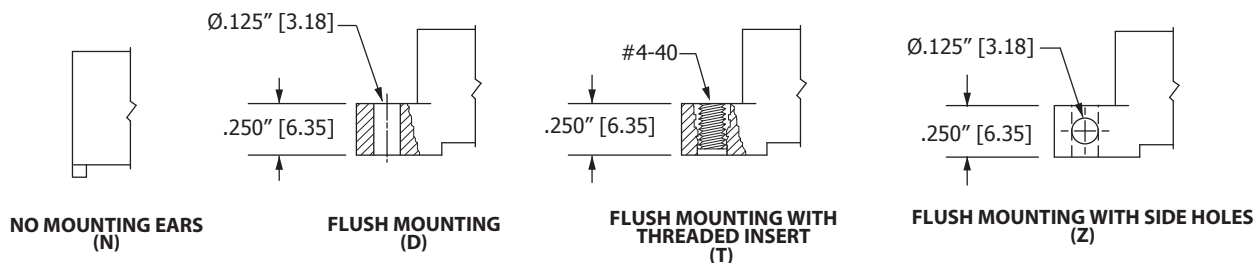


TERMINATION TYPE	POST CROSS SECTION (K)	POST LENGTH L ± .025" [0.64]	FITS MIN. HOLE SIZE
RS DIP SOLDER	.025" [0.64] SQ.	.190" [4.83]	.040" [1.02]
RM WIRE WRAP	.025" [0.64] SQ.	.560" [14.20]	.040" [1.02]
TA RIGHT ANGLE	.025" [0.64] SQ.	.100" [2.54]	.043" [1.09]
TB RIGHT ANGLE	.025" [0.64] SQ.	.180" [4.57]	.043" [1.09]
TM RIGHT ANGLE	.025" [0.64] SQ.	.250" [6.35]	.043" [1.09]

PCB LAYOUT



MOUNTING STYLE





.125" [3.18 mm] Contact Centers, .610" [15.49 mm] Insulator Height, Dip Solder/Wire Wrap/Right Angle for .093" [2.36 mm] or .125" [3.18 mm] Mating PCB

PART NUMBER OPTIONS

MATERIALS (INSULATOR/CONTACT)

- E = PBT/Phosphor Bronze(Standard)
 - R = PPS/Phosphor Bronze
 - G = PA9T/Phosphor Bronze
 - H = PBT & Beryllium Copper
 - A = PPS & Beryllium Copper
 - J = PA9T & Beryllium Copper
- (Consult factory for other materials.)
Refer to Page 7 for Operating/Processing Temperatures

CONTACT FINISH - RoHS Compliant

All platings are Lead Free and have .000050" Nickel underplate

Contact Surface	Termination
B = .000010" Gold	.000100" Pure Tin, Matte
C = .000030" Gold	.000100" Pure Tin, Matte
G = .000010" Gold	.000005" Gold
Y = .000030" Gold	.000005" Gold
Contact Surface	Overall Plating
S = .000010" Gold	.000010" Gold
M = .000030" Gold	.000010" Gold
E = .000100" Pure Tin, Matte	.000100" Pure Tin, Matte

CONTACT CENTERS

- A = .125" [3.18 mm]

E B A 50 D R M D - S273

MODIFICATION CODE (Consult Factory)

- S273 = FOR .093" ± .008" [2.36 mm ± 0.20 mm] THICK MATING PCB
- S664 = FOR .125" ± .008" [3.18 mm ± 0.20 mm] THICK MATING PCB

MOUNTING STYLE (Opposite Page)

- N = No Mounting
- D = Flush Mounting
- T = Flush Mounting With Threaded Inserts
- Z = Flush Mounting With Side Holes

TERMINATION TYPE (Opposite Page)

- RS = .025" [0.64 mm] Square Dip Solder
- RM = .025" [0.64 mm] Square Wire Wrap
- TA, TB, TM = .025" [0.64 mm] Square Right Angle

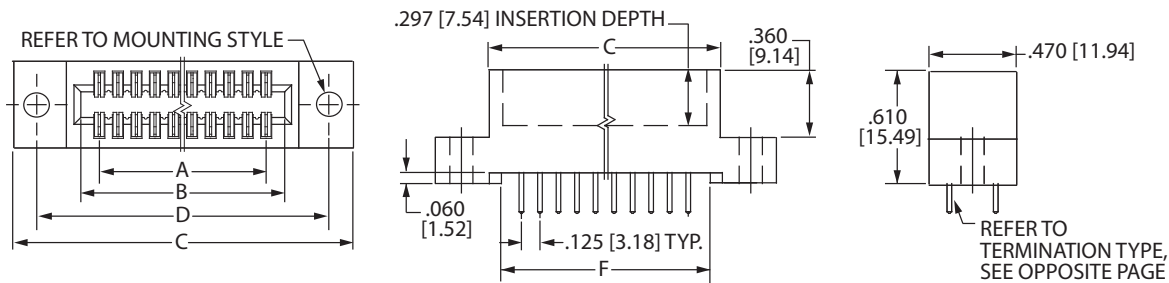
READOUT (Opposite Page)

- D = Dual
- H = Half Loaded

NUMBER OF CONTACT POSITIONS

See Chart Below

DIMENSIONS Dimensions in [] are in millimeters, all others are in inches.



Tolerances on non-critical dimensions may vary slightly due to shrinkage differential per insulator material; Consult factory.

POSITIONS/ CONTACTS	INCHES						MILLIMETERS					
	A±.008	B±.008	C±.015	D±.010	E±.020	F±.015	A±0.20	B±0.20	C±0.38	D±0.25	E±0.51	F±0.38
06/12*	0.625	0.875	1.035	1.295	1.555	0.915	15.88	22.23	26.29	32.89	39.50	23.24
08/16*	0.875	1.125	1.285	1.545	1.805	1.165	22.23	28.58	32.64	39.24	45.85	29.59
10/20*	1.125	1.375	1.535	1.795	2.055	1.415	28.58	34.93	38.99	45.59	52.20	35.94
14/28*	1.625	1.875	2.035	2.295	2.555	1.915	41.28	47.63	51.69	58.29	64.90	48.64
15/30*	1.750	2.000	2.160	2.420	2.680	2.040	44.45	50.80	54.86	61.47	68.07	51.82
18/36*	2.125	2.375	2.535	2.795	3.055	2.415	53.98	60.33	64.39	70.99	77.60	61.34
22/44*	2.625	2.875	3.035	3.295	3.555	2.915	66.68	73.03	77.09	83.69	90.30	74.04
24/48*	2.875	3.125	3.285	3.545	3.805	3.165	73.03	79.38	83.44	90.04	96.65	80.39
25/50	3.000	3.250	3.410	3.670	3.930	3.290	76.20	82.55	86.61	93.22	99.82	83.57
28/56*	3.375	3.625	3.785	4.045	4.305	3.665	85.73	92.08	96.14	102.74	109.35	93.09
30/60	3.625	3.875	4.035	4.295	4.555	3.915	92.08	98.43	102.49	109.09	115.70	99.44
31/62*	3.750	4.000	4.160	4.420	4.680	4.040	95.25	101.60	105.66	112.27	118.87	102.62
32/64	3.875	4.125	4.285	4.545	4.805	4.165	98.43	104.78	108.84	115.44	122.05	105.79
35/70*	4.250	4.500	4.660	4.920	5.180	4.540	107.95	114.30	118.36	124.97	131.57	115.32
36/72	4.375	4.625	4.785	5.045	5.305	4.665	111.13	117.48	121.54	128.14	134.75	118.49
40/80*	4.875	5.125	5.285	5.545	5.805	5.165	123.83	130.18	134.24	140.84	147.45	131.19
43/86*	5.250	5.500	5.660	5.920	6.180	5.540	133.35	139.70	143.76	150.37	156.97	140.72
44/88*	5.375	5.625	5.785	6.045	6.305	5.665	136.53	142.88	146.94	153.54	160.15	143.89
49/98*	6.000	6.250	6.410	6.670	6.930	6.290	152.40	158.75	162.81	169.42	176.02	159.77
50/100	6.125	6.375	6.535	6.795	7.055	6.415	155.58	161.93	165.99	172.59	179.20	162.94

* Consult factory for availability.