



Chipsmall Limited consists of a professional team with an average of over 10 year of expertise in the distribution of electronic components. Based in Hongkong, we have already established firm and mutual-benefit business relationships with customers from,Europe,America and south Asia,supplying obsolete and hard-to-find components to meet their specific needs.

With the principle of “Quality Parts,Customers Priority,Honest Operation,and Considerate Service”,our business mainly focus on the distribution of electronic components. Line cards we deal with include Microchip,ALPS,ROHM,Xilinx,Pulse,ON,Everlight and Freescale. Main products comprise IC,Modules,Potentiometer,IC Socket,Relay,Connector.Our parts cover such applications as commercial,industrial, and automotives areas.

We are looking forward to setting up business relationship with you and hope to provide you with the best service and solution. Let us make a better world for our industry!



Contact us

Tel: +86-755-8981 8866 Fax: +86-755-8427 6832

Email & Skype: info@chipsmall.com Web: www.chipsmall.com

Address: A1208, Overseas Decoration Building, #122 Zhenhua RD., Futian, Shenzhen, China



Single Phase Glass Passivated Silicon Bridge Rectifier

$V_{RRM} = 50\text{ V} - 400\text{ V}$

$I_O = 35\text{ A}$

Features

- Integrally molded heat sink provides low thermal resistance for maximum heat dissipation
- High surge current capability
- Universal 3-way terminals: snap on, wire-around, or P.C board mounting
- High temperature soldering guaranteed: 260°C/ 10 seconds at 5 lbs (2.3 kg) tension
- Not ESD Sensitive

Mechanical Data

Case: Molded plastic with heat sink integrally mounted in the bridge encapsulation

Terminals: Either nickel plated 0.25". Faston lugs or copper leads 0.040" diameter.

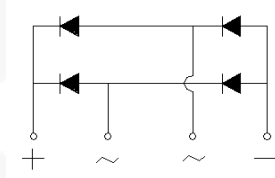
Polarity: Polarity symbols marked on the body

Mounting position: Bolt down on heat-sink with silicone thermal compound between bridge and mounting surface

Weight: 15 grams or 0.53 ounces

Mounting torque: 20 inch-lbs max

GBPC-T/W Package



Maximum ratings at $T_c = 25\text{ }^\circ\text{C}$, unless otherwise specified (GBPCXXXXT uses GBPC-T package while GBPCXXXXW uses GBPC-W package)

Parameter	Symbol	Conditions	GBPC35005T/W	GBPC3501T/W	GBPC3502T/W	GBPC3504T/W	Unit
Repetitive peak reverse voltage	V_{RRM}		50	100	200	400	V
RMS reverse voltage	V_{RMS}		35	70	140	280	V
DC blocking voltage	V_{DC}		50	100	200	400	V
Operating temperature	T_j		-55 to 150	-55 to 150	-55 to 150	-55 to 150	$^\circ\text{C}$
Storage temperature	T_{stg}		-55 to 150	-55 to 150	-55 to 150	-55 to 150	$^\circ\text{C}$

Electrical characteristics at $T_c = 25\text{ }^\circ\text{C}$, unless otherwise specified

Single phase, half sine wave, 60 Hz, resistive or inductive load

For capacitive load derate current by 20%

Parameter	Symbol	Conditions	GBPC35005T/W	GBPC3501T/W	GBPC3502T/W	GBPC3504T/W	Unit
Maximum average forward rectified current	I_O	$T_c = 50\text{ }^\circ\text{C}$	35.0	35.0	35.0	35.0	A
Peak forward surge current	I_{FSM}	single sine-wave	400	400	400	400	A
Maximum instantaneous forward voltage drop per leg	V_F	$I_F = 17.5\text{ A}$	1.1	1.1	1.1	1.1	V
Maximum DC reverse current at rated DC blocking voltage per leg	I_R	$T_a = 25\text{ }^\circ\text{C}$	5	5	5	5	μA
		$T_a = 125\text{ }^\circ\text{C}$	500	500	500	500	
Rating for fusing	I^2t	$1\text{ ms} < t_m < 8.3\text{ ms}$	660	660	660	660	A^2sec
RMS isolation voltage from case to leads	V_{ISO}		2500	2500	2500	2500	V
Typical junction capacitance	C_j		300	300	300	300	pF
Typical thermal resistance	$R_{\theta JC}$		1.4	1.4	1.4	1.4	$^\circ\text{C/W}$

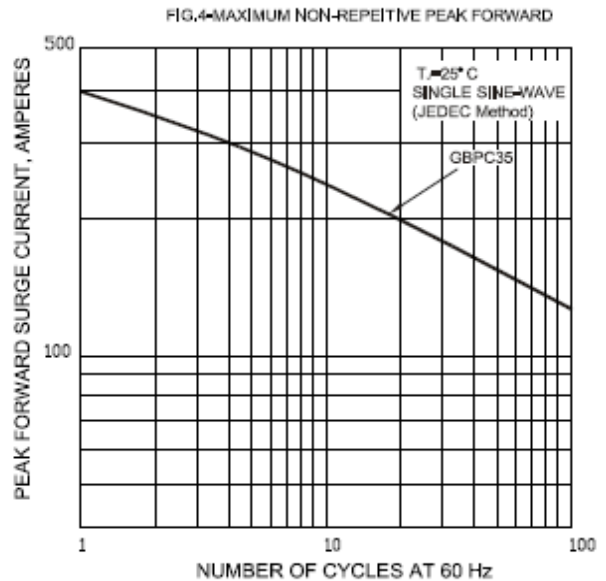
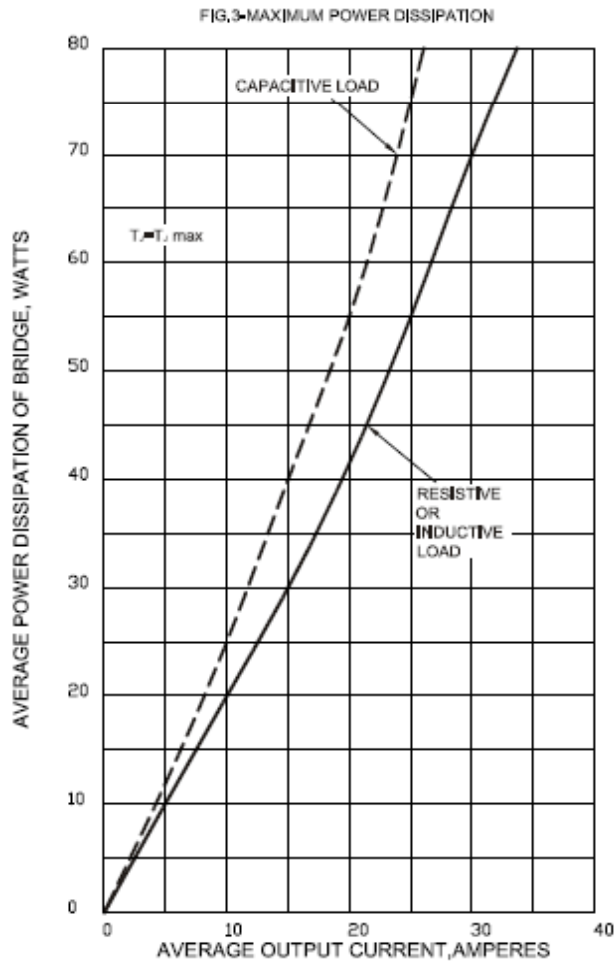
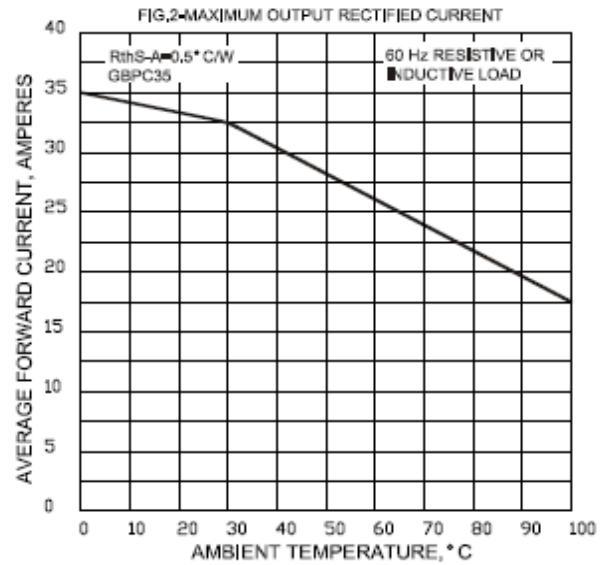
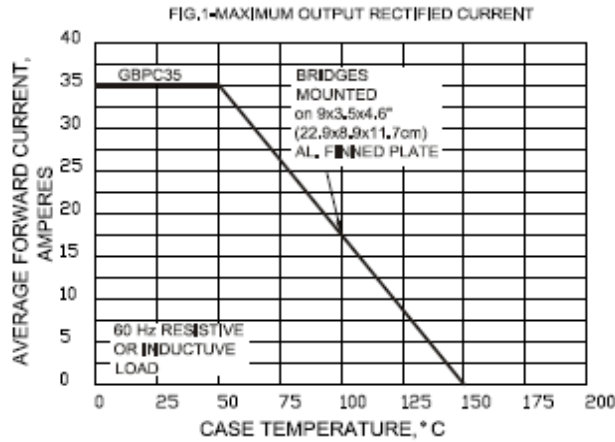


FIG.5-TYPICAL INSTANTANEOUS FORWARD CHARACTERISTICS PER LEG

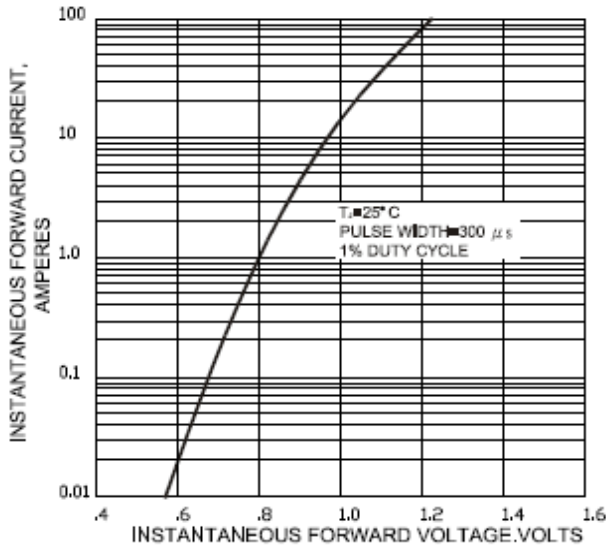


FIG.6-TYPICAL REVERSE CHARACTERISTICS

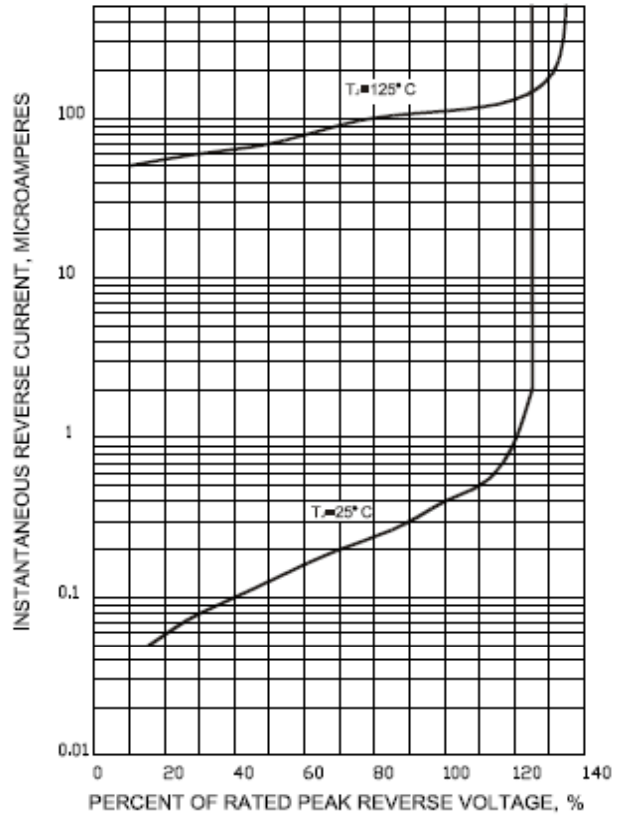


FIG.7-TYPICAL JUNCTION CAPACITANCE PER LEG

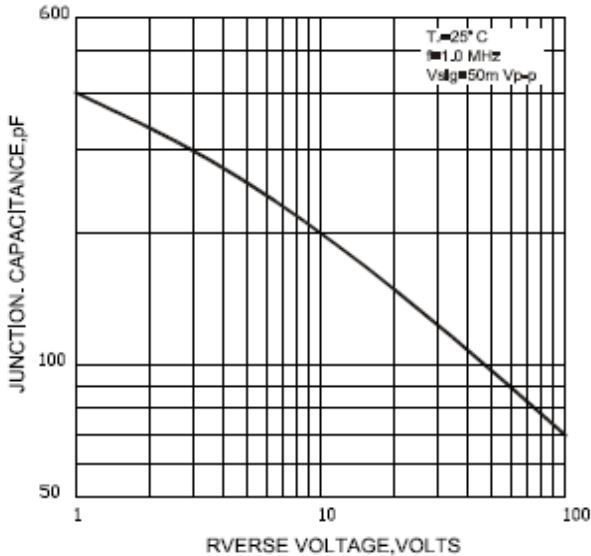
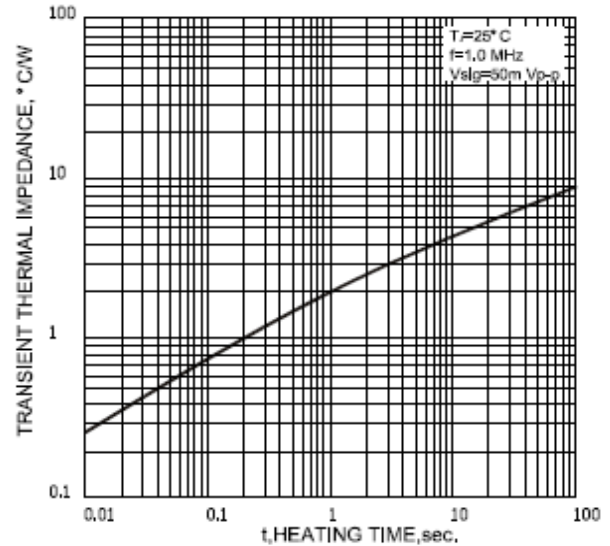
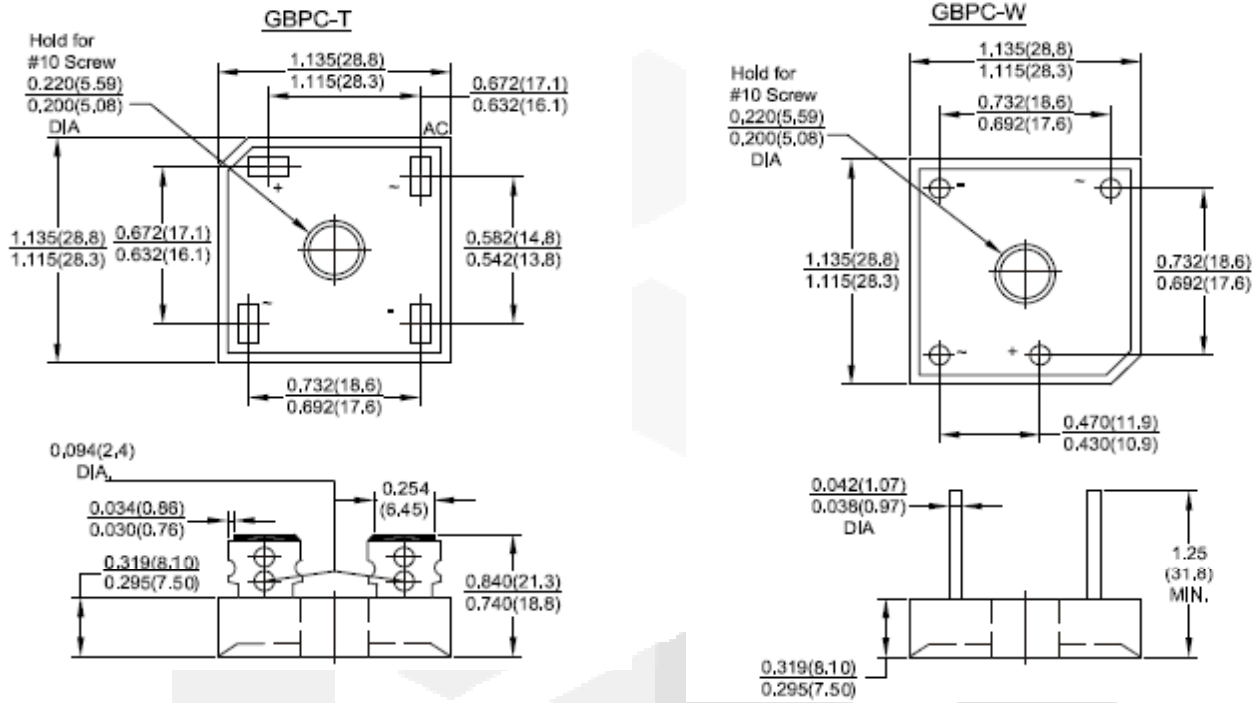


FIG.8-TYPICAL TRANSIENT THERMAL IMPEDANCE



Package dimensions and terminal configuration

Product is marked with part number and terminal configuration.



Dimensions in inches and (millimeters)

