



Chipsmall Limited consists of a professional team with an average of over 10 year of expertise in the distribution of electronic components. Based in Hongkong, we have already established firm and mutual-benefit business relationships with customers from,Europe,America and south Asia,supplying obsolete and hard-to-find components to meet their specific needs.

With the principle of “Quality Parts,Customers Priority,Honest Operation,and Considerate Service”,our business mainly focus on the distribution of electronic components. Line cards we deal with include Microchip,ALPS,ROHM,Xilinx,Pulse,ON,Everlight and Freescale. Main products comprise IC,Modules,Potentiometer,IC Socket,Relay,Connector.Our parts cover such applications as commercial,industrial, and automotives areas.

We are looking forward to setting up business relationship with you and hope to provide you with the best service and solution. Let us make a better world for our industry!



Contact us

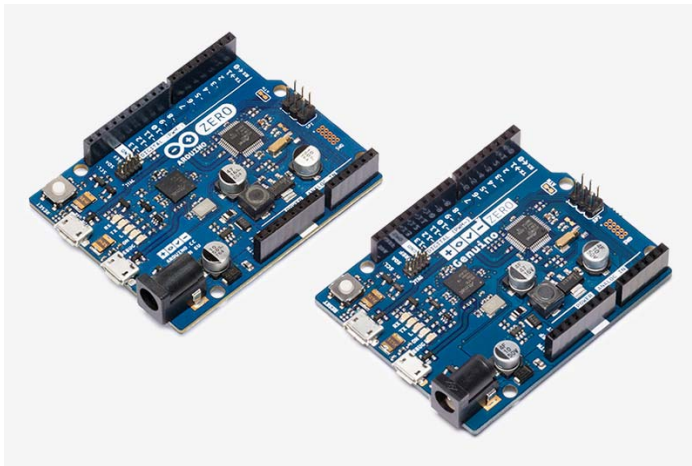
Tel: +86-755-8981 8866 Fax: +86-755-8427 6832

Email & Skype: info@chipsmall.com Web: www.chipsmall.com

Address: A1208, Overseas Decoration Building, #122 Zhenhua RD., Futian, Shenzhen, China



ARDUINO & GENUINO PRODUCTS (/EN/MAIN/PRODUCTS) > Arduino Zero & Genuino Zero



Arduino ZERO (USA ONLY) & Genuino ZERO (OUTSIDE USA)

The Zero is a simple and powerful 32-bit extension of the platform established by the UNO. This board aims to provide a platform for innovative projects in smart IoT devices, wearable technology, high-tech automation, crazy robotics, and much more.

Overview

3.3V 32-bit 48 MHz ARM Core

The Zero is a simple and powerful 32-bit extension of the platform established by the UNO. The Zero board expands the family by providing increased performance, enabling a variety of project opportunities for devices, and acts as a great educational tool for learning about 32-bit application development.

The Zero applications span from smart IoT devices, wearable technology, high-tech automation, to crazy robotics. The board is powered by Atmel's SAMD21 MCU, which features a 32-bit ARM Cortex® M0+ core. One of its most important features is Atmel's Embedded Debugger (EDBG), which provides a full debug interface without the need for additional hardware, significantly increasing the ease-of-use for software debugging. EDBG also supports a virtual COM port that can be used for device and bootloader programming.

Warning: Unlike most Arduino & Genuino boards, the Zero runs at 3.3V. The maximum voltage that the I/O pins can tolerate is 3.3V. Applying voltages higher than 3.3V to any I/O pin could damage the board.

The board contains everything needed to support the microcontroller; simply connect it to a computer with a micro-USB cable or power it with a AC-to-DC adapter or battery to get started. The Zero is compatible with all the shields that work at 3.3V and are compliant with the 1.0 Arduino pinout.

You can find your board warranty informations here (</en/Main/warranty>).

Note

Arduino and Genuino boards based on AVR microcontrollers get a reset and restart sketch execution each time the Serial Monitor of the Arduino Software (IDE) is opened. This is also the mechanism used to upload sketches to these boards. This board is different: when the Zero is connected through the Programming Port and you open the serial monitor, the board does not automatically reset and the sketch loaded keeps running. To restart the sketch you need to press the reset button on the board itself.

Getting Started

In the Getting Started section (</en/Guide/ArduinoZero>), you can find all the information you need to configure your board, use the Arduino Software (IDE) (</en/Main/Software>), and start to tinker with coding and electronics. To keep your Zero's Bootloader up to date, the Update Procedure (</en/Tutorial/ZeroBootloaderUpdate>) explains what you should do each time there is a new Core release.

Need Help?

- On the Software on the Arduino Forum (<https://forum.arduino.cc/index.php?board=98.0>)
- On Projects on the Arduino Forum (<https://forum.arduino.cc/index.php?board=3.0>)
- On the Product itself through our Customer Support (https://store.arduino.cc/index.php?main_page=contact_us&language=en)

Get inspired

Try out the low power characteristics (</en/Tutorial/ArduinoZeroPowerConsumption>) of the Zero, or play a wave file stored on the SD card (</en/Tutorial/SimpleAudioPlayerZero>) using the new Audio library and the 10 bit DAC, or even learn how to use the RTC library methods. (</en/Tutorial/SimpleRTC>)

Discover some more Arduino and Genuino Zero projects featured from Arduino Project Hub (<https://create.arduino.cc/projecthub/products/arduino-zero-genuino-zero>), our tutorial platform.

Related Items

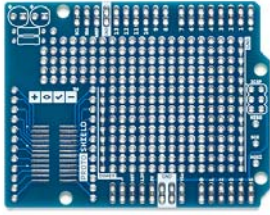
The Arduino and Genuino family is so big! Check Genuino / Arduino ZERO related items and add them to your maker toolbox!

([en/Main/ArduinoWiFiShield101](/en/Main/ArduinoWiFiShield101))



ARDUINO WIFI SHIELD 101

([en/Main/ArduinoProtoShield](/en/Main/ArduinoProtoShield))



PROTO SHIELD

(<https://store.arduino.cc/product/C000086>)



ARDUINO/GENUINO ZERO CASE

Technical specs

Microcontroller	ATSAMD21G18, 32-Bit ARM Cortex M0+
Operating Voltage	3.3V
Digital I/O Pins	20
PWM Pins	All but pins 2 and 7
UART	2 (Native and Programming)
Analog Input Pins	6, 12-bit ADC channels
Analog Output Pins	1, 10-bit DAC
External Interrupts	All pins except pin 4
DC Current per I/O Pin	7 mA
Flash Memory	256 KB
SRAM	32 KB
EEPROM	None. See documentation
LED_BUILTIN	13
Clock Speed	48 MHz
Length	68 mm
Width	30 mm
Weight	12 gr.

Documentation

OSH: Schematics

The Zero is open-source hardware! You can build your own board using the following files:

EAGLE FILES

IN .ZIP

(</en/uploads/Main/ArduinoZero-reference.zip>)

SCHEMATICS

IN .PDF

(</en/uploads/Main/ArduinoZero-schematic.pdf>)

ARM Core Benefits

The Zero has a 32-bit ARM core that can outperform typical 8-bit microcontroller boards. The most significant differences are:

- 32-bit core that allows operations on 4 byte wide data within a single CPU clock. (For more information see the int type (</en/Reference/Int>) page)
- CPU Clock at 48MHz
- 12 channels DMA controller that can relieve the CPU from doing memory intensive tasks
- 32 bit Real Time Counter (RTC) with clock/calendar function
- 32 bit CRC generator
- Two-channel Inter IC Sound (I2S) interface
- Peripheral Touch Controller (PTC)

For further information about the SAM-D21 microcontroller please refer to the datasheet (http://www.atmel.com/Images/Atmel-42181-SAM-D21_Datasheet.pdf).

Atmel Embedded Debugger

The Atmel Embedded Debugger (EDBG) implements a SWD interface in order to program the on-board SAMD21 and is also connected to one hardware serial of the microcontroller. This means that the 'Serial' class responds to the programming port of the board. The Zero has been designed in collaboration with ATMEL, and the on-board EDBG can be used through ATMEL Studio to get full access to the microcontroller memories to help debug your code.

Power

The Arduino Zero can be powered via the USB connector or with an external power supply. The power source is selected automatically.

External (non-USB) power can come either from an AC-to-DC adapter (such as a wall-wart) or battery, and can be connected using a 2.1mm center-positive plug connected to the board's power jack, or directly to the GND and VIN pin headers of the POWER connector.

The board can operate on an external supply of 6 to 20 volts. The recommended range is 7 to 12 volts.

The power pins are as follows:

- VIN. The input voltage to the board when it's using an external power source (as opposed to 5 volts from the USB connection or other regulated power source). You can supply voltage through this pin, or if supplying voltage via the power jack, access it through this pin.
- 5V. This pin outputs a regulated 5V from the regulator on the board. The board can be supplied with power either from the DC power jack (7 - 12V), the USB connector (5V), or the VIN pin of the board (7-12V). Supplying voltage via the 5V or 3.3V pins bypasses the regulator, and can damage your board if it is not sufficiently regulated. We don't advise it.
- 3.3V. A 3.3 volt supply generated by the on-board regulator. Maximum current draw is 800 mA. This regulator also provides power to the SAMD21 microcontroller.
- GND. Ground pins.
- IOREF. This pin on the board provides the voltage reference with which the microcontroller operates. A properly configured shield can read the IOREF pin voltage and select the appropriate power source or enable voltage translators on the outputs for working with the 5V or 3.3V.

Memory

The SAMD21 has 256 KB Flash Memory. It also has 32 KB of SRAM and up to 16 KB of EEPROM by emulation.

Input and Output

Each of the 20 general purpose I/O pins on the Zero can be used for digital input or digital output using `pinMode()` (</en/Reference/PinMode>), `digitalWrite()` (</en/Reference/DigitalWrite>), and `digitalRead()` (</en/Reference/DigitalRead>) functions. Pins that can be used for PWM output are: 3, 4, 5, 6, 8, 9, 10, 11, 12, 13 using `analogWrite()` (</en/Reference/AnalogWrite>) function. All pins operate at 3.3 volts. Each pin can source or sink a maximum of 7 mA and has an internal pull-up resistor (disconnected by default) of 20-50 kOhms.

In addition, some pins have specialized functions:

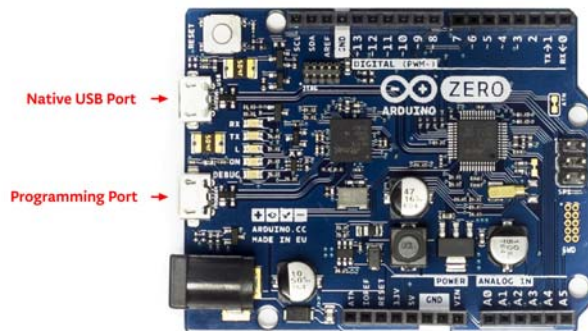
- Serial: 0 (RX) and 1 (TX). Used to receive (RX) and transmit (TX) TTL serial data. These pins are connected to the Serial1 class. The native usb port instead responds to the SerialUSB class
- External Interrupts: available on all the pins except pin 4.
- DAC: A0. Provide a 10bit voltage output with the analogWrite() (/en/Reference/AnalogWrite) function.
- PWM: 3, 4, 5, 6, 8, 9, 10, 11, 12, 13. Provide 8-bit PWM output with the analogWrite() (/en/Reference/AnalogWrite) function.
- SPI: SS, MOSI, MISO, SCK. Located on the ICSP header only support SPI communication using the SPI library (/en/Reference/SPI).
- LED: 13. There is a built-in LED driven by digital pin 13. When the pin is HIGH value, the LED is on, when the pin is LOW, it's off.
- Analog Inputs. Six of the 20 general purpose I/O pins on the Zero provide analog input. These are labeled A0 through A5, and each provide up to 12bits of resolution (i.e. 4096 different values). By default they measure from ground to 3.3 volts, though is it possible to change the upper end of their range using the AREF pin and the analogReference() function.
- TWI: SDA pin and SCL pin. Support TWI communication using the Wire library (/en/Reference/Wire)

There are a couple of other pins on the board:

- AREF. Reference voltage for the analog inputs. Used with analogReference() (/en/Reference/AnalogReference).
- Reset. Bring this line LOW to reset the microcontroller. Typically used to add a reset button to shields which block the one on the board.

Programming

Uploading sketches to the SAMD21 is different from the AVR microcontrollers found in other Arduino & Genuino boards.



Either USB port can be used for programming the board, although using the Programming port is recommended due to the way the erasing of the chip is handled:

- Programming port: To use this port, select "Arduino/Genuino Zero (Programming Port)" as your board in the Arduino IDE. Connect the Zero's programming port (the one closest to the DC power jack) to your computer. The programming port uses the EDBG as a USB-to-SWD chip.
- Native port: To use this port, select "Arduino/Genuino Zero (Native USB Port)" as your board in the Arduino IDE. The Native USB port is connected directly to the SAMD21. Connect the Zero's Native USB port (the one closest to the reset button) to your computer.

Unlike other Arduino & Genuino boards which use avrdude for uploading, the Zero relies on bossac (<http://sourceforge.net/projects/b-o-s-s-a/>) while the programming port uses openOCD (<http://openocd.org/>).

JTAG connector for debugging through SWD

Another external debugger can be used by means of the on-board JTAG connector.

ICSP Connector used for SPI communication

Here are details of the SPI pins location within the ICSP connector:



EEPROM

Part of the Flash memory may be used as a non-volatile storage with some limitations, the lifetime of the typical flash memory is about 25K write-cycles, and unlike EEPROM, and it must be erased in pages before writing. The flash memory is erased when you upload a new sketch.

Serial ports

- Serial is a hardware serial port internally connected to the EDBG chip and corresponds to the virtual serial port on your computer when you connect the Arduino Zero through the programming USB connector;
- SerialUSB is a virtual USB serial port, which corresponds to the virtual serial port on your computer when you connect the Arduino Zero through the native USB connector.
- Serial1 is the hardware serial port connected to pin 0 and 1, which is free to use to connect to external serial devices.

Burn the Bootloader

Using the Zero Programming Port it is possible to burn the bootloader used by the Native USB port. To burn the bootloader follow this procedure:

- select Tools->Programmer->Atmel EDBG
- select Tools->Board->Arduino/Genuino Zero (Programming Port)
- select Tools->Burn Bootloader

USB Overcurrent Protection

The Zero has a resettable polyfuse that protects your computer's USB ports from shorts and overcurrent. Although most computers provide their own internal protection, the fuse provides an extra layer of protection. If more than 500 mA is applied to the USB port, the fuse will automatically break the connection until the short or overload is removed.

Physical Characteristics

The maximum length and width of the Zero PCB are 2.7 and 2.1 inches respectively, with the USB connectors and power jack extending beyond the former dimension. Three screw holes allow the board to be attached to a surface or case. Note that the distance between digital pins 7 and 8 is 160 mil (0.16"), not an even multiple of the 100 mil spacing of the other pins. The Zero is designed to be compatible with most shields designed for the Uno, Diecimila or Duemilanove. Digital pins 0 to 13 (and the adjacent AREF and GND pins), analog inputs 0 to 5, the power header, and

"ICSP" (SPI) header are all in equivalent locations. Further the main UART (serial port) is located on the same pins (0 and 1).