



Chipsmall Limited consists of a professional team with an average of over 10 year of expertise in the distribution of electronic components. Based in Hongkong, we have already established firm and mutual-benefit business relationships with customers from,Europe,America and south Asia,supplying obsolete and hard-to-find components to meet their specific needs.

With the principle of "Quality Parts,Customers Priority,Honest Operation,and Considerate Service",our business mainly focus on the distribution of electronic components. Line cards we deal with include Microchip,ALPS,ROHM,Xilinx,Pulse,ON,Everlight and Freescale. Main products comprise IC,Modules,Potentiometer,IC Socket,Relay,Connector.Our parts cover such applications as commercial,industrial, and automotives areas.

We are looking forward to setting up business relationship with you and hope to provide you with the best service and solution. Let us make a better world for our industry!



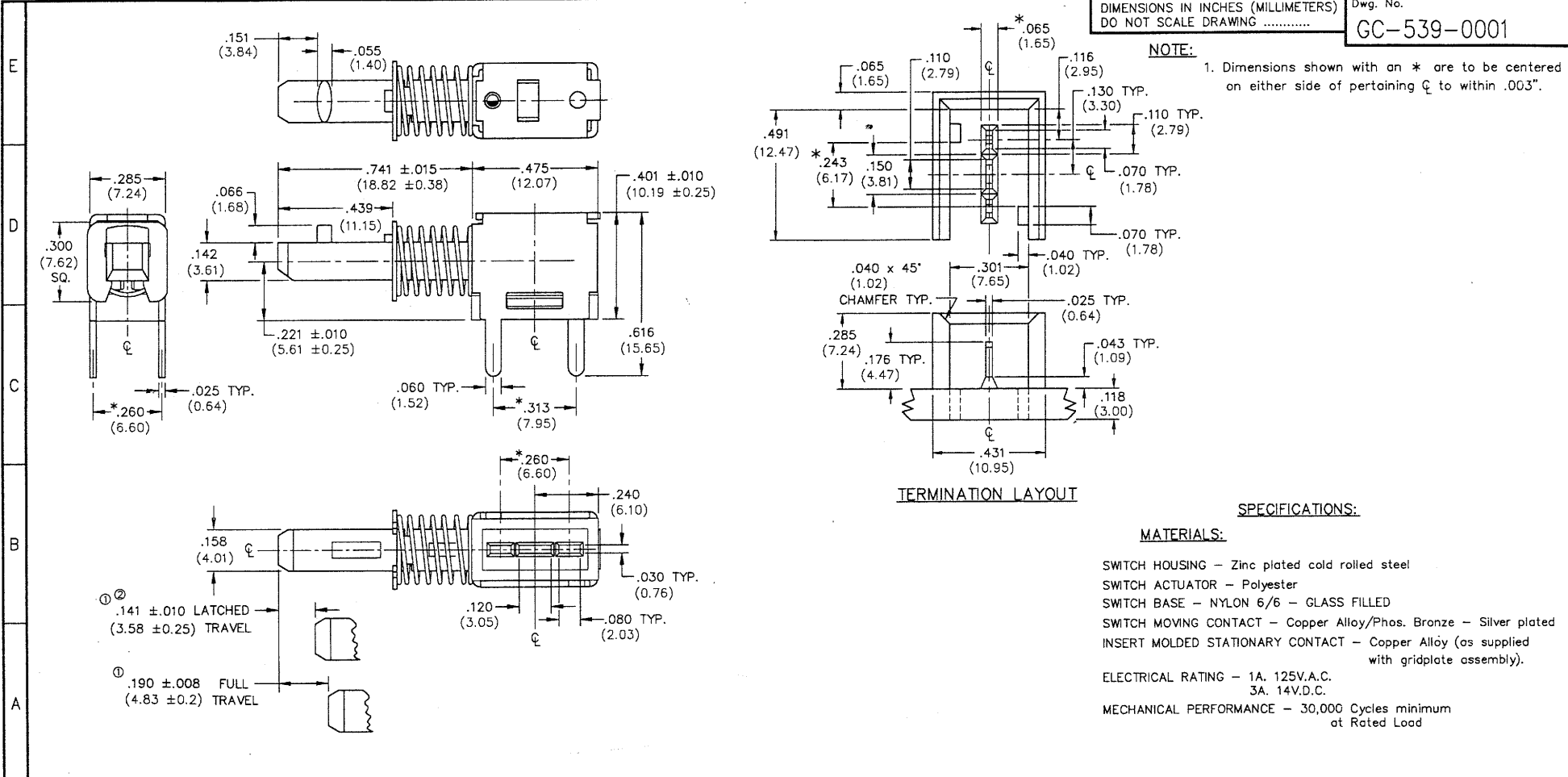
Contact us

Tel: +86-755-8981 8866 Fax: +86-755-8427 6832

Email & Skype: info@chipsmall.com Web: www.chipsmall.com

Address: A1208, Overseas Decoration Building, #122 Zhenhua RD., Futian, Shenzhen, China





DIMENSIONS IN INCHES (MILLIMETERS)
DO NOT SCALE DRAWING

Dwg. No.
GC-539-0001

NOTE:

1. Dimensions shown with an * are to be centered on either side of pertaining ϕ to within .003".

TERMINATION LAYOUT

SPECIFICATIONS:

MATERIALS:

SWITCH HOUSING - Zinc plated cold rolled steel
 SWITCH ACTUATOR - Polyester
 SWITCH BASE - NYLON 6/6 - GLASS FILLED
 SWITCH MOVING CONTACT - Copper Alloy/Phos. Bronze - Silver plated
 INSERT MOLDED STATIONARY CONTACT - Copper Alloy (as supplied with gridplate assembly).
 ELECTRICAL RATING - 1A. 125V.A.C.
 3A. 14V.D.C.
 MECHANICAL PERFORMANCE - 30,000 Cycles minimum at Rated Load

1 2 3 4 5 6 7 8 9 10

FORM-B3	REVISIONS	
	0 RELEASED DCW 7-AUG 02 2000	1 CHANGED TRAVEL TOL. ±.015 TO ±.008. (±0.38) (±0.2) 2 PLACES. DCW 9-07-2000
	1 CHANGED LATCHED TRAVEL TOL. ±.008 TO ±.010 (±0.02) (±0.25) DCW 9-18-2001	
	2 CHANGED LATCHED TRAVEL TOL. ±.008 TO ±.010 (±0.02) (±0.25) DCW 9-18-2001	

PDF File Made	
Drawn by: DGW 7-21-2000	Checked by: A. Gula 7/31/00
Approval: <i>[Signature]</i> 7/31/00	

CW INDUSTRIES Southampton, Pa. 18966 TOLERANCES UNLESS OTHERWISE SPECIFIED 2 Place Decimal ±.010 METRIC 3 Place Decimal ±.005 1 Place Dec. ±.25mm Angles ±1' 2 Place Dec. ±.13mm	Title: LONG THROW PUSH - LATCH SWITCH ASSEMBLY
	Division: SWITCH
	Dwg. No. GC-539-0001

MASTER