



Chipsmall Limited consists of a professional team with an average of over 10 year of expertise in the distribution of electronic components. Based in Hongkong, we have already established firm and mutual-benefit business relationships with customers from,Europe,America and south Asia,supplying obsolete and hard-to-find components to meet their specific needs.

With the principle of “Quality Parts,Customers Priority,Honest Operation,and Considerate Service”,our business mainly focus on the distribution of electronic components. Line cards we deal with include Microchip,ALPS,ROHM,Xilinx,Pulse,ON,Everlight and Freescale. Main products comprise IC,Modules,Potentiometer,IC Socket,Relay,Connector.Our parts cover such applications as commercial,industrial, and automotives areas.

We are looking forward to setting up business relationship with you and hope to provide you with the best service and solution. Let us make a better world for our industry!



Contact us

Tel: +86-755-8981 8866 Fax: +86-755-8427 6832

Email & Skype: info@chipsmall.com Web: www.chipsmall.com

Address: A1208, Overseas Decoration Building, #122 Zhenhua RD., Futian, Shenzhen, China

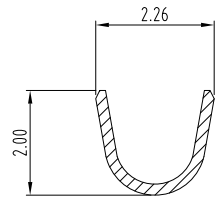


This document is the property of Amphenol Corporation and is delivered on the express condition that is not to be disclosed, reproduced or used, in whole or in part, for manufacture or sale by anyone other than Amphenol Corporation without its prior consent, and that no right is granted to disclose or to use any information in this document.

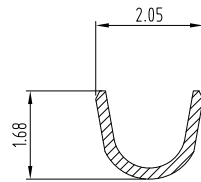
The marking on this product doesn't contain environmental hazardous materials per Material Specification SS-00259 for Sony GP compliant or per directive 2011/65/EU for RoHS compliant or per IEC 61249-2-21 for Halogen-Free compliant.

FOR REFERENCE ONLY

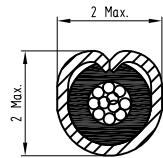
REVISIONS			
SYM	ECN No.	DESCRIPTION	DATE
AX1	NE-XXXXX	UNRELEASED REVISION	2016.4.24
AX2	NE-XXXXX	UNRELEASED REVISION	2018.5.3



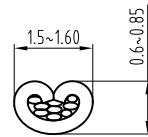
SECTION: A-A



SECTION: B-B



Insulation after crimping



Conductor after crimping

PARTS No.: GFMF01T0 X R0000HR

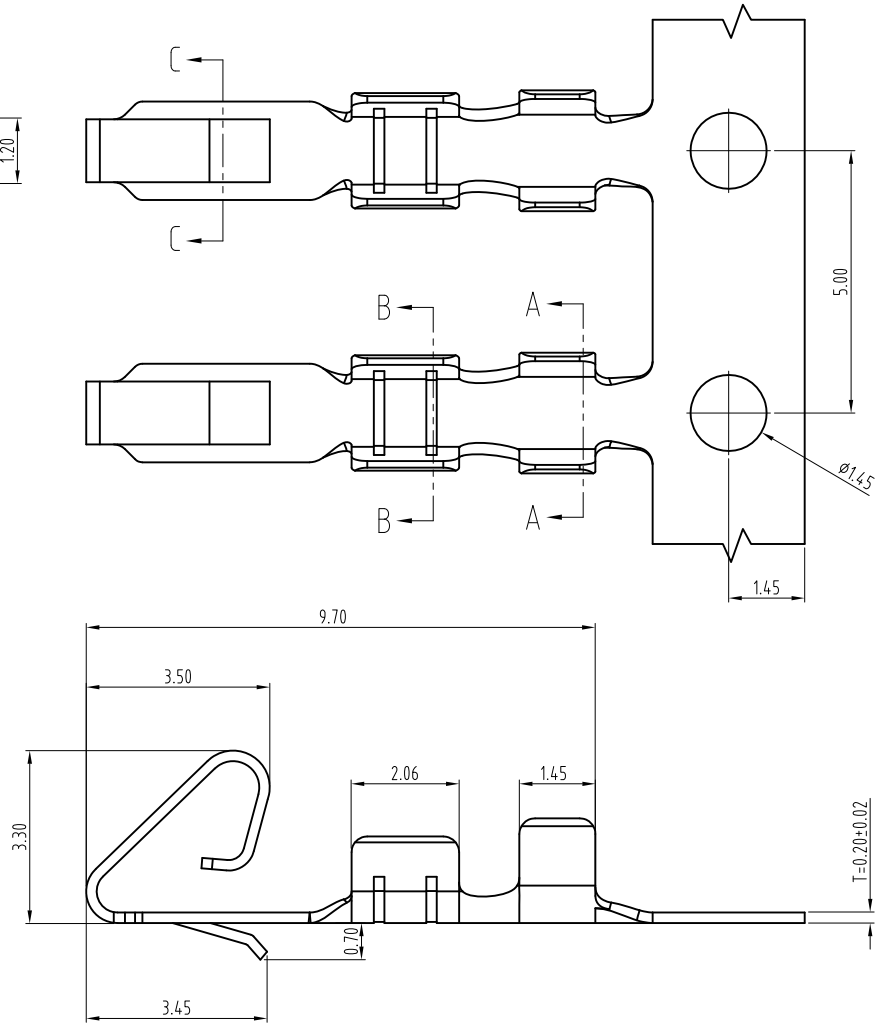
FINISH
0: TIN
1: GF
2: 15 μ "
3: 30 μ "


NOTES:

- MATERIAL:
TERMINAL: COPPER ALLOY.
- FINISH:
TERMINAL:

CONTACT AREA: SECTIVE GOLD PLATING ;
SOLDERING AREA: MATTE TIN PLATING 100 μ " THICKNESS MIN.;
UNDER PLATING: NICKEL PLATING 50 μ " THICKNESS MIN. OVERALL.

- THIS PRODUCT DOESN'T CONTAIN ENVIRONMENTAL HAZARDOUS PER DIRECTIVE 2011/65/EU FOR RoHS COMPLIANT.



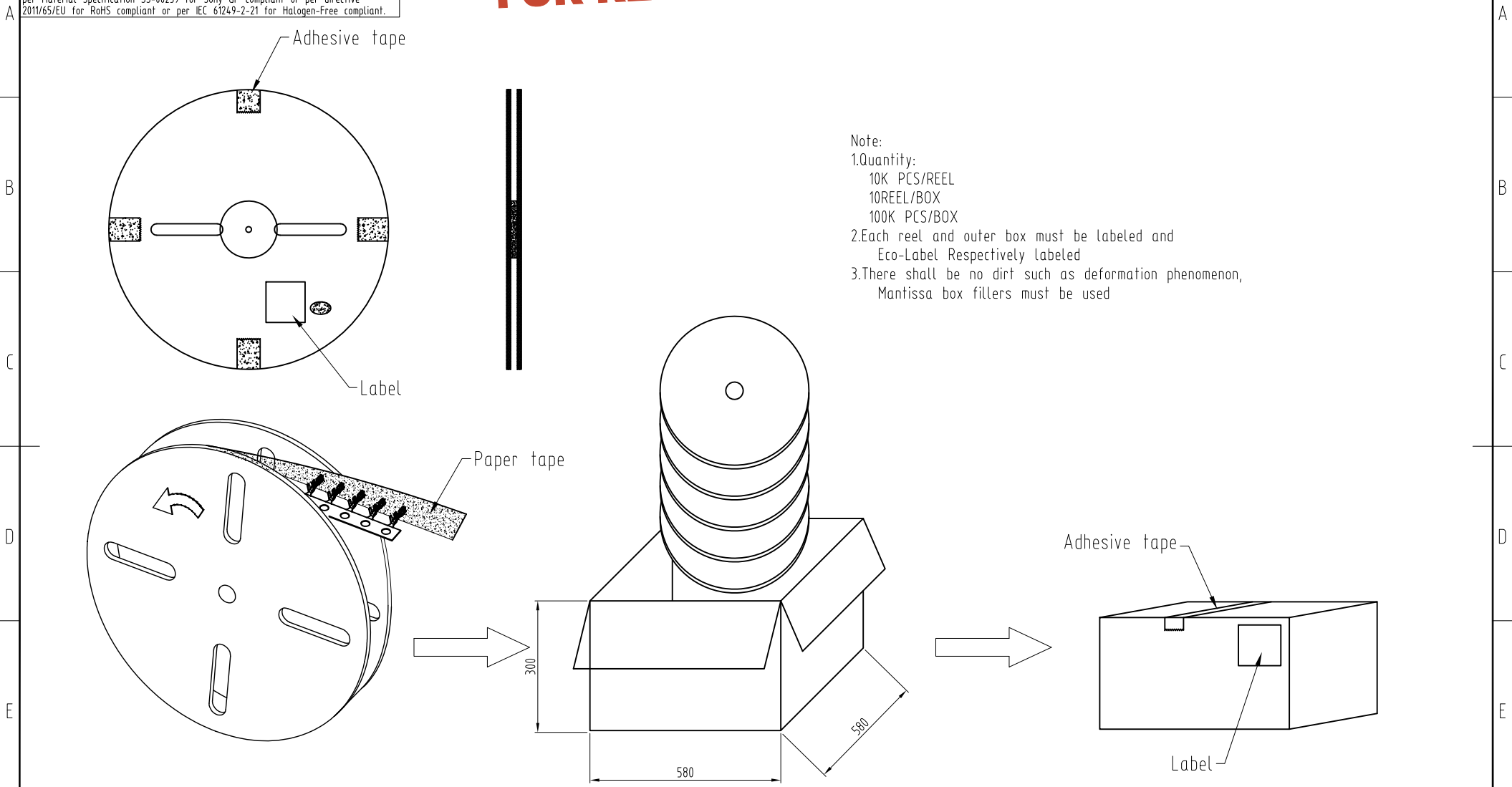
TOLERANCE		DRAWN	APPROVALS	DATE	TITLE			Amphenol®						
X. X.X X.XX X.XXX	±0.30 ±0.20 ±0.10	DESIGNED	Joseph Jiang	2018.5.3	CRIMP TERMINAL FOR FAN CONNECTOR			Amphenol Corporation Amphenol Taiwan Corporation						
		CHECKED	Chenny Yeh	2018.5.3										
		APPROVED	Hank Hsu	2018.5.3										
		ANGULAR	±2°											
UNLESS OTHERWISE SPECIFIED		DWG TYPE	CUST DWG	PROJECT CODE	TXXX		UNIT	mm	SIZE	A3	PART No.	GFMF01TOXR0000HR		
							SCALE	NA	SHEET	1 OF 2	DWG No.	GFMF01TOXR0000HR	REV.	AX2

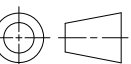
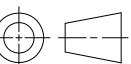
This document is the property of Amphenol Corporation and is delivered on the express condition that is not to be disclosed, reproduced or used, in whole or in part, for manufacture or sale by anyone other than Amphenol Corporation without its prior consent, and that no right is granted to disclose or to use any information in this document.

The marking on this product doesn't contain environmental hazardous materials per Material Specification SS-00259 for Sony GP compliant or per directive 2011/65/EU for RoHS compliant or per IEC 61249-2-21 for Halogen-Free compliant.

FOR REFERENCE ONLY

REVISIONS				
SYM	ECN No.	DESCRIPTION	DATE	BY
AX1	NE-XXXXX	UNRELEASED REVISION	2016.4.24	Joseph Jiang
AX2	NE-XXXXX	UNRELEASED REVISION	2018.5.3	Joseph Jiang



TOLERANCE		DRAWN APPROVALS		DATE	TITLE				Amphenol® Amphenol Corporation Amphenol Taiwan Corporation			
X. X.X ±0.30 X.XX ±0.20 X.XXX ±0.10		DESIGNED Joseph Jiang		2018.5.3	CRIMP TERMINAL FOR FAN CONNECTOR							
		CHECKED Chenny Yeh		2018.5.3								
ANGULAR ±2°		APPROVED Hank Hsu		2018.5.3			UNIT mm	SIZE A3	PART No. GFMF01TOXR0000HR			
UNLESS OTHERWISE SPECIFIED		DWG TYPE CUST DWG		PROJECT CODE TXXX			SCALE NA	SHEET 2 OF 2	DWG No. GFMF01TOXR0000HR		REV. AX2	