



Chipsmall Limited consists of a professional team with an average of over 10 year of expertise in the distribution of electronic components. Based in Hongkong, we have already established firm and mutual-benefit business relationships with customers from,Europe,America and south Asia,supplying obsolete and hard-to-find components to meet their specific needs.

With the principle of “Quality Parts,Customers Priority,Honest Operation,and Considerate Service”,our business mainly focus on the distribution of electronic components. Line cards we deal with include Microchip,ALPS,ROHM,Xilinx,Pulse,ON,Everlight and Freescale. Main products comprise IC,Modules,Potentiometer,IC Socket,Relay,Connector.Our parts cover such applications as commercial,industrial, and automotives areas.

We are looking forward to setting up business relationship with you and hope to provide you with the best service and solution. Let us make a better world for our industry!



## Contact us

Tel: +86-755-8981 8866 Fax: +86-755-8427 6832

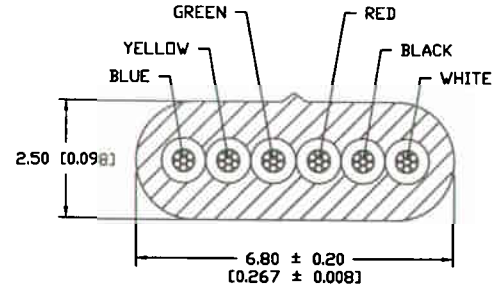
Email & Skype: info@chipsmall.com Web: www.chipsmall.com

Address: A1208, Overseas Decoration Building, #122 Zhenhua RD., Futian, Shenzhen, China

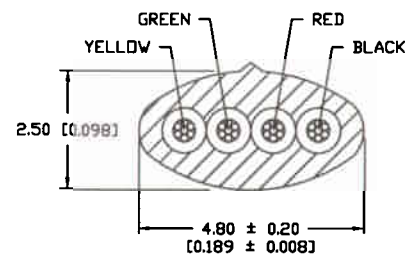


THESE DRAWINGS AND SPECIFICATIONS ARE THE SOLE PROPERTY OF I/O INTERCONNECT INC., U.S.A. AND SHALL NOT BE REPRODUCED, COPIED, OR USED IN ANY MANNER WITHOUT THE PRIOR WRITTEN CONSENT OF I/O INTERCONNECT INC. OR ITS AFFILIATED SUBSIDIARIES.

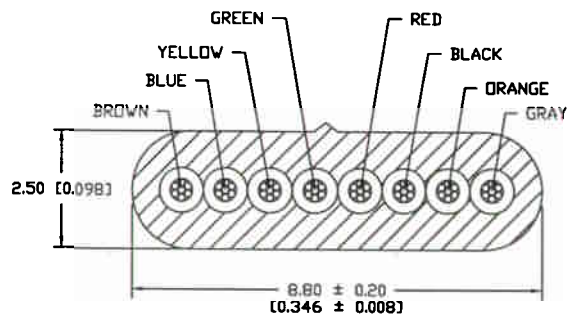
DWG. NO.	ZONE	REV.	DESCRIPTION	DATE	APPROVED
X10-0X0		G	ECN C173	01/05/01	K.C.
		H	ADD NOTE 3.0 & CHANGE P/N TO REFLECT RQHS COMPLIANCE PER ECN D811	04/08/05	M.G.



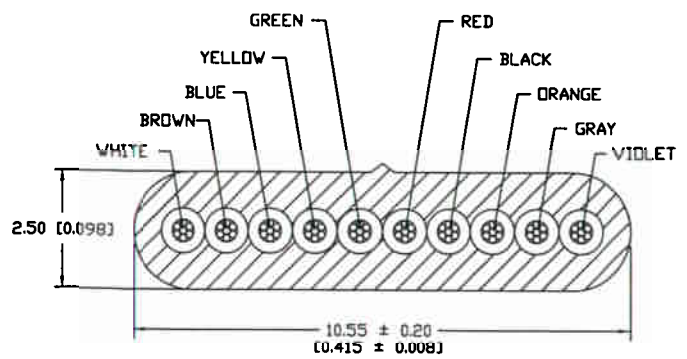
**6 CONDUCTOR CABLE**



**4 CONDUCTOR CABLE**



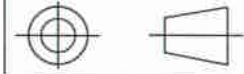
**8 CONDUCTOR CABLE**



**10 CONDUCTOR CABLE**

H0043-2000-ND	GLF-120-410-000	4	SILVER SATIN	609.60 M ± 60.96 M [2000 FT ± 200 FT]
H0042-2000-ND	GLF-120-410-010	4	BLACK	609.60 M ± 60.96 M [2000 FT ± 200 FT]
H0041-2000-ND	GLF-120-410-020	4	WHITE	609.60 M ± 60.96 M [2000 FT ± 200 FT]
H0063-1000-ND	GLF-120-610-000	6	SILVER SATIN	304.80 M ± 30.48 M [1000 FT ± 100 FT]
H0062-1000-ND	GLF-120-610-010	6	BLACK	304.80 M ± 30.48 M [1000 FT ± 100 FT]
H0061-1000-ND	GLF-120-610-020	6	WHITE	304.80 M ± 30.48 M [1000 FT ± 100 FT]
H0083-1000-ND	GLF-120-810-000	8	SILVER SATIN	304.80 M ± 30.48 M [1000 FT ± 100 FT]
H0082-1000-ND	GLF-120-810-010	8	BLACK	304.80 M ± 30.48 M [1000 FT ± 100 FT]
H0081-1000-ND	GLF-120-810-020	8	WHITE	304.80 M ± 30.48 M [1000 FT ± 100 FT]
H0103-1000-ND	GLF-120-010-000	10	SILVER SATIN	304.80 M ± 30.48 M [1000 FT ± 100 FT]
H0102-1000-ND	GLF-120-010-010	10	BLACK	304.80 M ± 30.48 M [1000 FT ± 100 FT]
H0101-1000-ND	GLF-120-010-020	10	WHITE	304.80 M ± 30.48 M [1000 FT ± 100 FT]
PART NUMBER DIGI-KEY	PART NUMBER I/O INTERCONNECT	CONDUCTORS NUMBER OF	COLOR	PER REEL STANDARD LENGTH

THIRD ANGLE PROJECTION



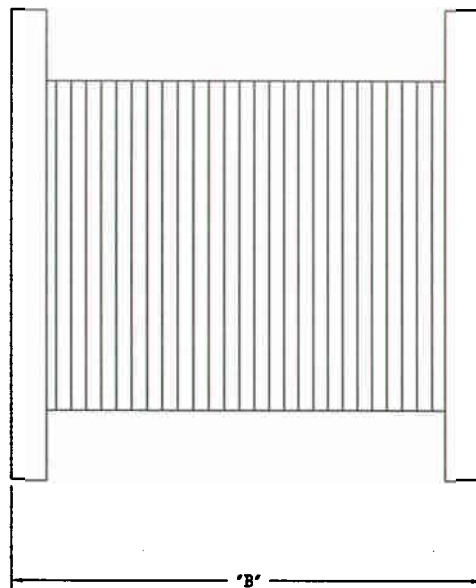
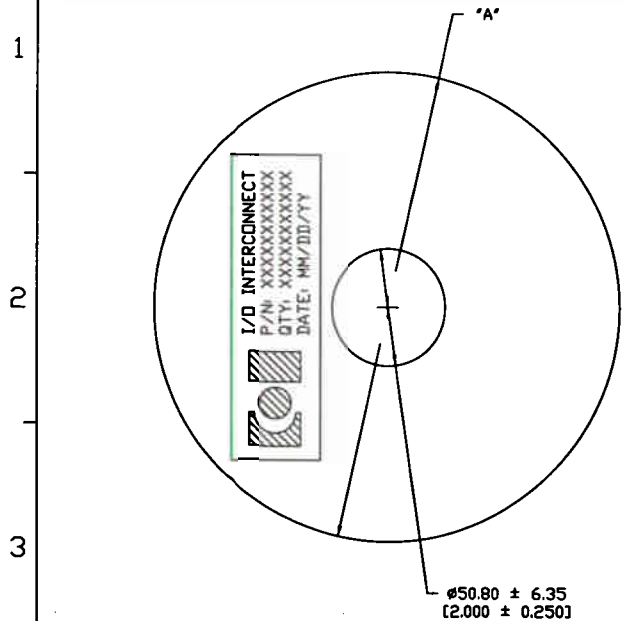
UNLESS OTHERWISE NOTED:  
1) DIMENSIONS ARE IN MILLIMETER [INCHES]  
2) TOLERANCES:  
X.XX ± 0.25 [0.01]

**I/O INTERCONNECT**  
SANTA ANA, CALIFORNIA

DR. BY JERRY SM	DATE 04/08/05	TITLE 26 AWG (7/34) BARE COPPER, NON-UL UNSHIELDED, MODULAR CABLE
DR. CHECKED		
REV.	DWG. NO. GLF-120-X10-0X0	
DESIGNED	PART NO. GLF-120-X10-0X0	
DIST./SALES	CUSTOMER I/O INTERCONNECT	REV. H
QA	SCALE NONE	SHEET 1 OF 2

THESE DRAWINGS AND SPECIFICATIONS ARE THE SOLE PROPERTY OF I/O INTERCONNECT INC., U.S.A. AND SHALL NOT BE REPRODUCED, COPIED, OR USED IN ANY MANNER WITHOUT THE PRIOR WRITTEN CONSENT OF I/O INTERCONNECT INC. OR ITS AFFILIATED SUBSIDIARIES.

DWG. NO.	ZONE	REV.	DESCRIPTION	DATE	APPROVED
X10-0X0		G	ECN C173	01/05/01	K.C.
		H	ADD NOTE 3.0 & CHANGE P/N TO REFLECT ROHS COMPLIANCE PER ECN D811	04/08/05	M.G.



NOTES: UNLESS OTHERWISE SPECIFIED.

1.0 MATERIAL AND SPECIFICATIONS

- 1.01 CONDUCTORS: 26 AWG (7/34) STRANDED BARE COPPER.
- 1.02 INSULATION: POLYPROPYLENE
- 1.03 COLOR: PER CALLOUT
- 2.0 ELECTRICAL CHARACTERISTICS
- 2.01 TEMPERATURE & VOLTAGE RATING: 80°C 30 V
- 2.02 CONDUCTORS RESISTANCE: 148 OHMS/KM MAX. AT 20°C
- 2.03 INSULATION RESISTANCE: 100 MEGOHMS/KM MIN. AT 20°C
- 2.04 CAPACITANCE: 15 PF/FT (MAX)
- 2.05 DIELECTRIC TEST: AC-500V PER 1 MINUTE

2.0 PACKAGING SPECIFICATIONS

- 2.01 ADD LABEL ON REEL. (SEE LABEL IN FIGURE 1.)
- 2.02 PLACE 2 CABLE REEL IN SHIPPING BOX. (SEE BOX SIZE.)
- 2.03 MARK BOX WITH PART NUMBER, QUANTITY, WEIGHT, AND PURCHASE ORDER NUMBER.

3.0 PART TO BE ROHS COMPLIANCE.



FIGURE 1: WHITE BACKGROUND WITH BLACK LETTERS

4	300.00 [11.811]	150.00 [5.906]	L=12.20' X W=12.20' X H=12.99'
6	250.00 [9.84]	150.00 [5.906]	L=9.84' X W=9.84' X H=12.99'
8	300.00 [11.811]	150.00 [5.906]	L=12.20' X W=12.20' X H=12.99'
10	300.00 [11.811]	180.00 [7.087]	L=12.20' X W=12.20' X H=8.66'
NUMBER OF CONDUCTOR	DIM 'A' (REF.)	$\pm 6.35 [0.250]$	DIMENSIONS MAX. OUTSIDE SHIPPING BOX

THIRD ANGLE PROJECTION

UNLESS OTHERWISE NOTED:  
 1) DIMENSIONS ARE IN MILLIMETER (INCHES)  
 2) TOLERANCES:  
 X.XX  $\pm 0.25 [0.01]$

I/O INTERCONNECT		SANTA ANA, CALIFORNIA	
DR. BY: JERRY SUN	DATE: 04/08/05	TITLE: 26 AWG (7/34) BARE COPPER, NON-UL UNSHIELDED, MODULAR CABLE	REV. H
DR. CHECKED:		DWG. NO: GLF-120-X10-0X0	
DESIGNER:		PART NO: GLF-120-X10-0X0	
CUT/SALES:		CUSTOMER: I/O INTERCONNECT	
SA:		SCALE: NONE	SHEET 2 OF 2