



Chipsmall Limited consists of a professional team with an average of over 10 year of expertise in the distribution of electronic components. Based in Hongkong, we have already established firm and mutual-benefit business relationships with customers from,Europe,America and south Asia,supplying obsolete and hard-to-find components to meet their specific needs.

With the principle of "Quality Parts,Customers Priority,Honest Operation,and Considerate Service",our business mainly focus on the distribution of electronic components. Line cards we deal with include Microchip,ALPS,ROHM,Xilinx,Pulse,ON,Everlight and Freescale. Main products comprise IC,Modules,Potentiometer,IC Socket,Relay,Connector.Our parts cover such applications as commercial,industrial, and automotives areas.

We are looking forward to setting up business relationship with you and hope to provide you with the best service and solution. Let us make a better world for our industry!



Contact us

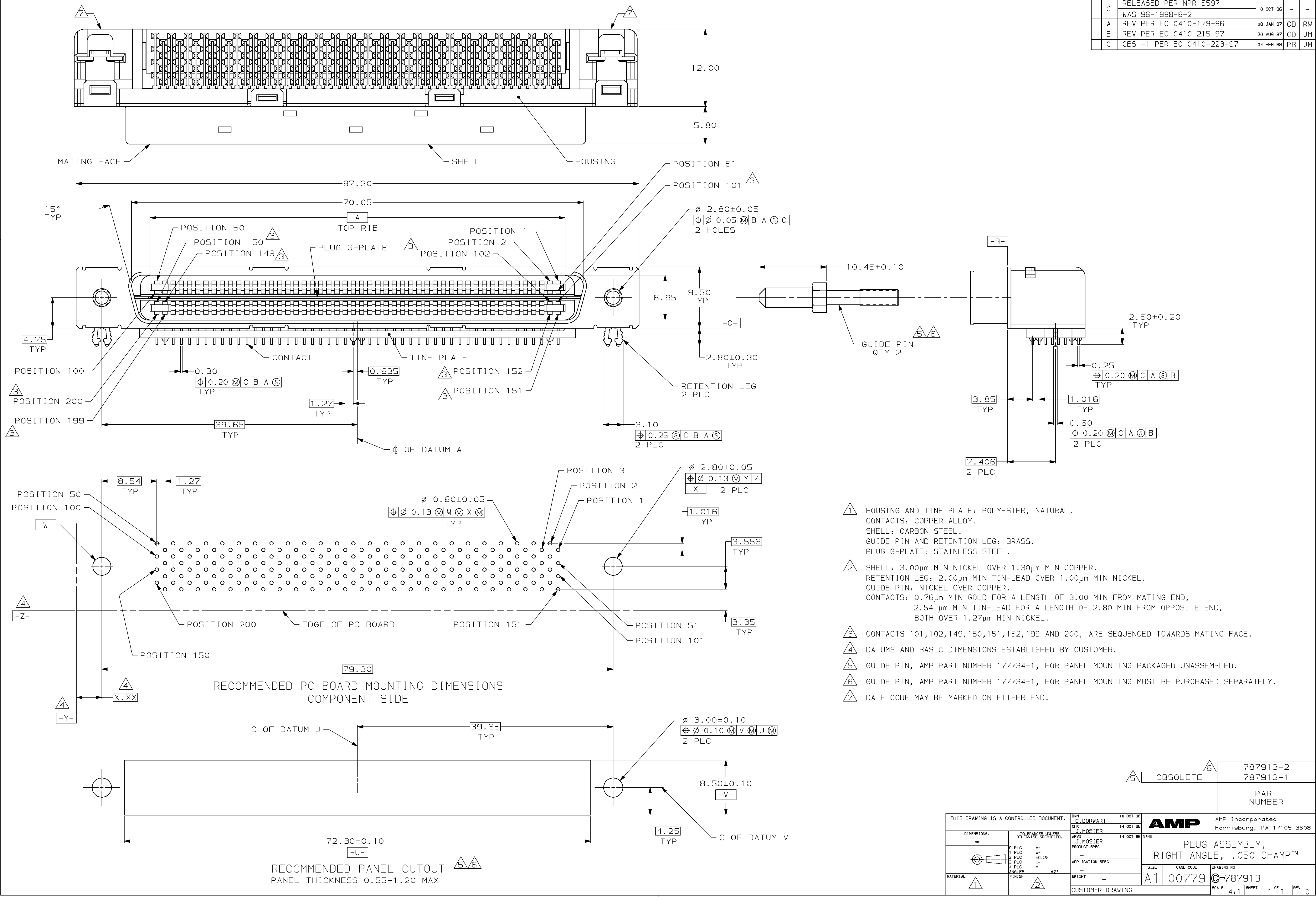
Tel: +86-755-8981 8866 Fax: +86-755-8427 6832

Email & Skype: info@chipsmall.com Web: www.chipsmall.com

Address: A1208, Overseas Decoration Building, #122 Zhenhua RD., Futian, Shenzhen, China



REVISONS		DATE	OWN	APVD
0	RELEASED PER NPR 5597 WAS 96-1998-6-2	10 OCT 96	-	-
A	REV PER EC 0410-179-96	08 JAN 97	CD	RW
B	REV PER EC 0410-215-97	20 AUG 97	CD	JM
C	OBS -1 PER EC 0410-223-97	04 FEB 98	PB	JM



- ① HOUSING AND TINE PLATE: POLYESTER, NATURAL.
CONTACTS: COPPER ALLOY.
SHELL: CARBON STEEL.
GUIDE PIN AND RETENTION LEG: BRASS.
PLUG G-PLATE: STAINLESS STEEL.
- ② SHELL: 3.00µm MIN NICKEL OVER 1.30µm MIN COPPER.
RETENTION LEG: 2.00µm MIN TIN-LEAD OVER 1.00µm MIN NICKEL.
GUIDE PIN: NICKEL OVER COPPER.
CONTACTS: 0.76µm MIN GOLD FOR A LENGTH OF 3.00 MIN FROM MATING END,
2.54 µm MIN TIN-LEAD FOR A LENGTH OF 2.80 MIN FROM OPPOSITE END,
BOTH OVER 1.27µm MIN NICKEL.
- ③ CONTACTS 101,102,149,150,151,152,199 AND 200, ARE SEQUENCED TOWARDS MATING FACE.
- ④ DATUMS AND BASIC DIMENSIONS ESTABLISHED BY CUSTOMER.
- ⑤ GUIDE PIN, AMP PART NUMBER 177734-1, FOR PANEL MOUNTING PACKAGED UNASSEMBLED.
- ⑥ GUIDE PIN, AMP PART NUMBER 177734-1, FOR PANEL MOUNTING MUST BE PURCHASED SEPARATELY.
- ⑦ DATE CODE MAY BE MARKED ON EITHER END.

⑦	787913-2
⑧	OBSOLETE 787913-1
PART NUMBER	

THIS DRAWING IS A CONTROLLED DOCUMENT.		OWN C. DORWART	10 OCT 96	AMP	AMP Incorporated
		CHK J. MOSIER	14 OCT 96		Harrisburg, PA 17105-3508
DIMENSIONS:		TOLERANCES UNLESS OTHERWISE SPECIFIED:		NAME	
mm		0 PLC	±	PRODUCT SPEC	
		1 PLC	±0.25	APPLICATION SPEC	
		2 PLC	±	WEIGHT	
		3 PLC	±	CUSTOMER DRAWING	
		4 PLC	±	SCALE 4:1	
		ANGLES	±2°	SHEET 1 OF 1	
		FINISH		REV C	