



Chipsmall Limited consists of a professional team with an average of over 10 year of expertise in the distribution of electronic components. Based in Hongkong, we have already established firm and mutual-benefit business relationships with customers from,Europe,America and south Asia,supplying obsolete and hard-to-find components to meet their specific needs.

With the principle of “Quality Parts,Customers Priority,Honest Operation,and Considerate Service”,our business mainly focus on the distribution of electronic components. Line cards we deal with include Microchip,ALPS,ROHM,Xilinx,Pulse,ON,Everlight and Freescale. Main products comprise IC,Modules,Potentiometer,IC Socket,Relay,Connector.Our parts cover such applications as commercial,industrial, and automotives areas.

We are looking forward to setting up business relationship with you and hope to provide you with the best service and solution. Let us make a better world for our industry!



Contact us

Tel: +86-755-8981 8866 Fax: +86-755-8427 6832

Email & Skype: info@chipsmall.com Web: www.chipsmall.com

Address: A1208, Overseas Decoration Building, #122 Zhenhua RD., Futian, Shenzhen, China



GPC130 Commercial/GPM130 Medical 130 Watt Global Performance Switchers



SPECIFICATIONS:

Ac Input

85-264 Vac, 47-63 Hz single phase.

Input Current

Maximum input current at 120 Vac, 60 Hz with full rated output load: 3.5 A

Hold-Up Time

20 ms minimum from loss of ac input at full load, nominal line (115 Vac).

Output Power

100 W continuous, 165 W peak; 130 W with 26 cfm air flow. Peak ratings are for 60 s maximum duration, 10% duty cycle. During peak load condition, output regulation may exceed total regulation limits.

Overload Protection

Fully protected against short circuit and output overload. Short circuit protection is cycling type power limit on outputs 1 & 2; foldback type on outputs 3 & 4. Recovery after fault is automatic. See output ratings chart for additional notes or conditions.

Overvoltage Protection

Main outputs: 124% ± 12% typical.

Efficiency

70% at full rated load, nominal input voltage, depending on model and load distribution.

Turn-on Time

Less than 1 second at 120 Vac, 25°C (inversely proportional to input voltage and thermistor temperature).

Input Protection

Internal ac fuse provided. Designed to blow only if a catastrophic failure occurs in the unit.

Inrush Current

Inrush is limited by internal thermistors. Inrush at 240 Vac under cold start conditions will not exceed 34 A.

Temperature Coefficient

0.03%/°C typical on all outputs.


Thermal Shutdown

Provided as a standard feature. Designed to protect unit from prolonged overtemperature.

Environmental

Designed for 0 to 50°C operation at full rated output power; derate output current and total output power by 2.5% per °C above 50°C. See Environmental and Packaging Specifications on next page.

FEATURES:

- Wide-range ac input 85-264 Vac
- 2-year warranty
- Commercial Approved to UL1950, IEC950, EN60950 and CSA22.2-234 L3
- Medical Approved to UL2601-1, IEC601-1 and CSA22.2 No. 601
- Conducted EMI exceeds FCC Class B and CISPR 22 Class B (Commercial models) and CISPR 11 Class B (Medical models)
-  marked to LVD

Power Fail

TTL- or CMOS-compatible output goes low (< 0.5V) 5 ms before output voltage drops more than 4% below nominal voltage upon loss of ac power. The signal is factory set to trip on 84 to 94 Vac brown-out depending upon incoming line impedance and distortion. Other settings are available to the user through adjustment of built-in potentiometer.

Output Noise

0.5% rms, 1% pk-pk, 20 MHz bandwidth, differential mode. Measured with noise probe directly across output terminals of the power supply.

Transient Response

Main output—500µSec typical response time for return to within 0.5% of final value for a 50% load step change. $\Delta i/\Delta t < 0.2 \text{ A}/\mu\text{s}$. Maximum voltage deviation is 3.5%. Startup/shutdown overshoot less than 3%.

Remote Sense

Provided as a standard feature on output 1.

Voltage Adjustment

Built-in potentiometer adjusts voltage ±5% on outputs 1 & 2.

Overload Protection

Factory set to begin power limiting at approximately 170 W.

EMI/EMC Compliance

All models include built-in EMI filtering to meet the following emissions requirements:

EMI SPECIFICATIONS	COMPLIANCE LEVEL
Conducted Emissions GPC130	EN55022 Class B; FCC Class B
Conducted Emissions GPM130	EN55022 Class B; FCC Class B
Static Discharge	EN61000-4-2, 6 kV contact, 8 kV air
RF Field Susceptibility	EN61000-4-3, 3 V/meter
Fast Transients/Bursts	EN61000-4-4, 2 kV, 5 kHz
Surge Susceptibility	EN61000-4-5, 1 kV diff., 2 kV com.

Commercial Leakage Current

0.7 mA 254 Vac @ 60 Hz input.

Commercial Safety

Approved to UL1950, CSA22.2 No. 234 Level 3, IEC950 and EN60950. UL file #E135803 commercial; CSA #LR46516 all models. The output(s) are intended for safety earthed Signal Output and Intermediate Circuits only. All dc outputs are SELV under normal and single fault conditions.

Medical Leakage Current

35 µA 254 Vac @ 60 Hz input.

Medical Safety

Approved to UL2601, CSA22.2 No. 601 Level 3 and IEC601. UL file E116994; CSA #LR46516. The output(s) are intended for safety earthed Signal Output and Intermediate Circuits only. The output(s) are not acceptable for patient connection without additional isolation. All dc outputs are SELV under normal and single fault conditions.



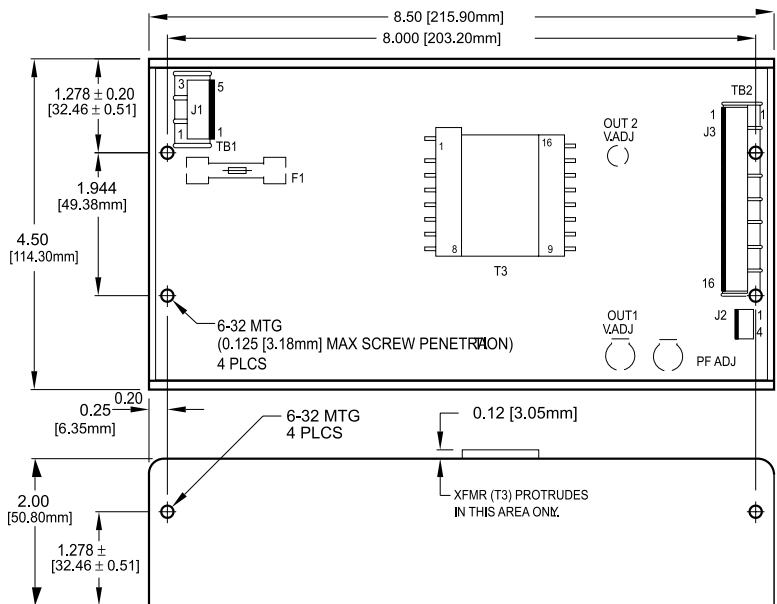
GPC130 Commercial/GPM130 Medical 130 Watt Multiple Output

Commercial Model	Medical Model	Output No.	Output	Output Minimum	Output Maximum (B)	Output Maximum (C)	Output Peak	Noise P-P	Total Regulation (A)
GPC130A	GPM130A	1	+5 V	3 A	16 A	20 A	25 A	50 mV	2%
		2	+12 V	0 A	5 A	5 A	8 A	120 mV	2%
		3	-12 V	0 A	1.2 A	1.2 A	1.5 A	120 mV	3%
		4	+12 V	0 A	1.2 A	1.2 A	1.5 A	120 mV	3%
GPC130B	GPM130B	1	+5 V	3 A	16 A	20 A	25 A	50 mV	2%
		2	+12 V	0 A	5 A	5 A	8 A	120 mV	2%
		3	-5 V	0 A	1.2 A	1.2 A	1.5 A	50 mV	3%
		4	-12 V	0 A	1.2 A	1.2 A	1.5 A	120 mV	3%
GPC130C	GPM130C	1	+5 V	3 A	16 A	20 A	25 A	50 mV	2%
		2	+12 V	0 A	5 A	5 A	8 A	120 mV	2%
		3	-15 V	0 A	1.2 A	1.2 A	1.5 A	150 mV	3%
		4	+15 V	0 A	1.2 A	1.2 A	1.5 A	150 mV	3%
GPC130D	GPM130D	1	+5 V	3 A	16 A	20 A	25 A	50 mV	2%
		2	+24 V	0 A	3.5 A	3.5 A	5 A	240 mV	2%
		3	-12 V	0 A	1.2 A	1.2 A	1.5 A	120 mV	3%
		4	+12 V	0 A	1.2 A	1.2 A	1.5 A	120 mV	3%
GPC130E	GPM130E	1	+5 V	3 A	16 A	20 A	25 A	50 mV	2%
		2	+24 V	0 A	3.5 A	3.5 A	5 A	240 mV	2%
		3	-15 V	0 A	1.2 A	1.2 A	1.5 A	150 mV	3%
		4	+15 V	0 A	1.2 A	1.2 A	1.5 A	150 mV	3%

A. Total regulation is defined as the maximum deviation from the nominal voltage for all steady-state conditions of initial voltage setting, input line voltage and output load.
 B. Unrestricted natural convection cooling.
 C. Requires 26 cfm moving air.

GPC130/GPM130 MECHANICAL SPECIFICATIONS

- INPUT:**
- J1: AMP P.C.B. HEADER P/N 640445-5
 PIN 1) AC LINE PIN 4) N/C
 PIN 2) N/C PIN 5) AC GROUND
 PIN 3) AC NEUTRAL
 MATING CONNECTOR AMP P/N
- TB1: 0.375 X 6-32 TERMINAL BLOCK HOUSING 640250-5 CONTACTS 770476-1
 PIN 1) AC LINE
 PIN 2) AC NEUTRAL
 PIN 3) AC GROUND
- SIGNALS: J2** AMP P.C.B. HEADER P/N 640440-4
 PIN 1) N/C
 PIN 2) + SENSE
 PIN 3) - SENSE
 PIN 4) POWER FAIL
 MATING CONNECTOR AMP P/N 640440-4
- OUTPUT:**
- J3: AMP P.C.B. HEADER P/N 1-640445-6
 PIN 1) OUTPUT #4 PIN 9) COMMON
 PIN 2) OUTPUT #4 PIN 10) COMMON
 PIN 3) OUTPUT #3 PIN 11) COMMON
 PIN 4) OUTPUT #3 PIN 12) COMMON
 PIN 5) OUTPUT #2 PIN 13) OUTPUT #1
 PIN 6) OUTPUT #2 PIN 14) OUTPUT #1
 PIN 7) COMMON PIN 15) OUTPUT #1
 PIN 8) COMMON PIN 16) OUTPUT #1
 MATING CONNECTOR AMP P/N
 HOUSING 1-640250-5
 CONTACTS 770476-1
- TB2: 0.375 X 6-32 TERMINAL BLOCK
 PIN 1) OUTPUT #4 PIN 5) COMMON
 PIN 2) OUTPUT #3 PIN 6) COMMON
 PIN 3) OUTPUT #2 PIN 7) OUTPUT #1
 PIN 4) COMMON PIN 8) OUTPUT #1



OPTIONAL COVER AVAILABLE, ORDER P/N 08-30466-1130
 OPTION: ADD "-T" SUFFIX TO PART NUMBER FOR
 6-32 SCREW TERMINAL BLOCK ON I/O
 WEIGHT 2.3 LBS MAX. [1.05 kg]
 TOLERANCES: X,XX=0.030 [0.76mm]
 X,XXX=0.010 [0.25mm]

Environmental Specification	Operating	Non-operating
Temperature (A)	See individual specs	-40 to +85°C
Humidity (A)	0 to 95% RH	0 to 95% RH
Shock (B)	20 g _{pk}	40 g _{pk}
Altitude	-500 to 10,000 ft	-500 to 40,000 ft
Vibration (C)	1.5 g _{rms} , 0.003 g ² /Hz	5 g _{rms} , 0.026 g ² /Hz

- A. Units should be allowed to warm up/operate under non-condensing conditions before application of power.
 B. Random vibration—10 to 2000Hz, 6dB/octave roll-off from 350 to 2000Hz, 3 orthogonal axes. Tested for 10 min./axis operating and 1 hr./axis non-operating.
 C. Shock testing—half-sinusoidal, 10 ± 3 ms duration, ± direction, 3 orthogonal axes, total 6 shocks.

