



Chipsmall Limited consists of a professional team with an average of over 10 year of expertise in the distribution of electronic components. Based in Hongkong, we have already established firm and mutual-benefit business relationships with customers from,Europe,America and south Asia,supplying obsolete and hard-to-find components to meet their specific needs.

With the principle of “Quality Parts,Customers Priority,Honest Operation,and Considerate Service”,our business mainly focus on the distribution of electronic components. Line cards we deal with include Microchip,ALPS,ROHM,Xilinx,Pulse,ON,Everlight and Freescale. Main products comprise IC,Modules,Potentiometer,IC Socket,Relay,Connector.Our parts cover such applications as commercial,industrial, and automotives areas.

We are looking forward to setting up business relationship with you and hope to provide you with the best service and solution. Let us make a better world for our industry!



## Contact us

Tel: +86-755-8981 8866 Fax: +86-755-8427 6832

Email & Skype: info@chipsmall.com Web: www.chipsmall.com

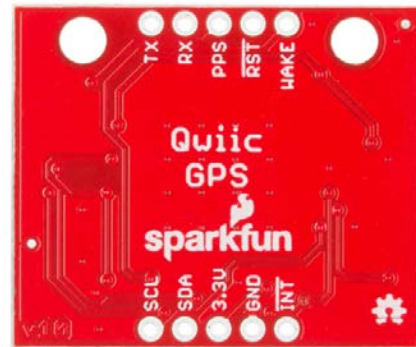
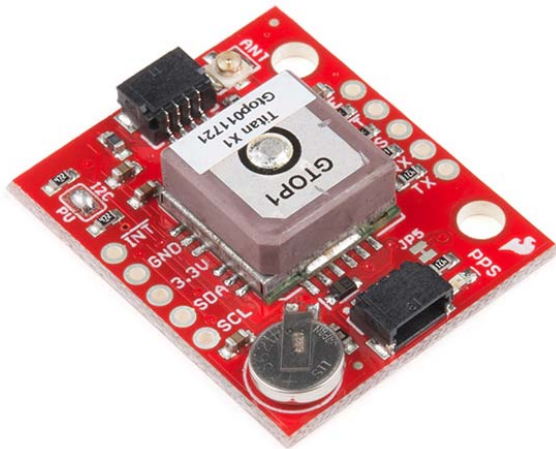
Address: A1208, Overseas Decoration Building, #122 Zhenhua RD., Futian, Shenzhen, China





# SparkFun GPS Breakout - XA1110 (Qwiic)

GPS-14414 RoHS Open Source Hardware



The SparkFun XA1110 GPS Breakout is a small I<sup>2</sup>C-supported module built for easy hookup, thanks to our Qwiic Connect System. Equipped with the XA1110 GPS module from GTOPI, this board utilizes the MediaTek MT3333 chipset, loaded with specialized SparkFun firmware that enables both I<sup>2</sup>C and serial ports simultaneously. Using I<sup>2</sup>C means you won't have to tie up your serial port with GPS, leaving it open to other possibilities.

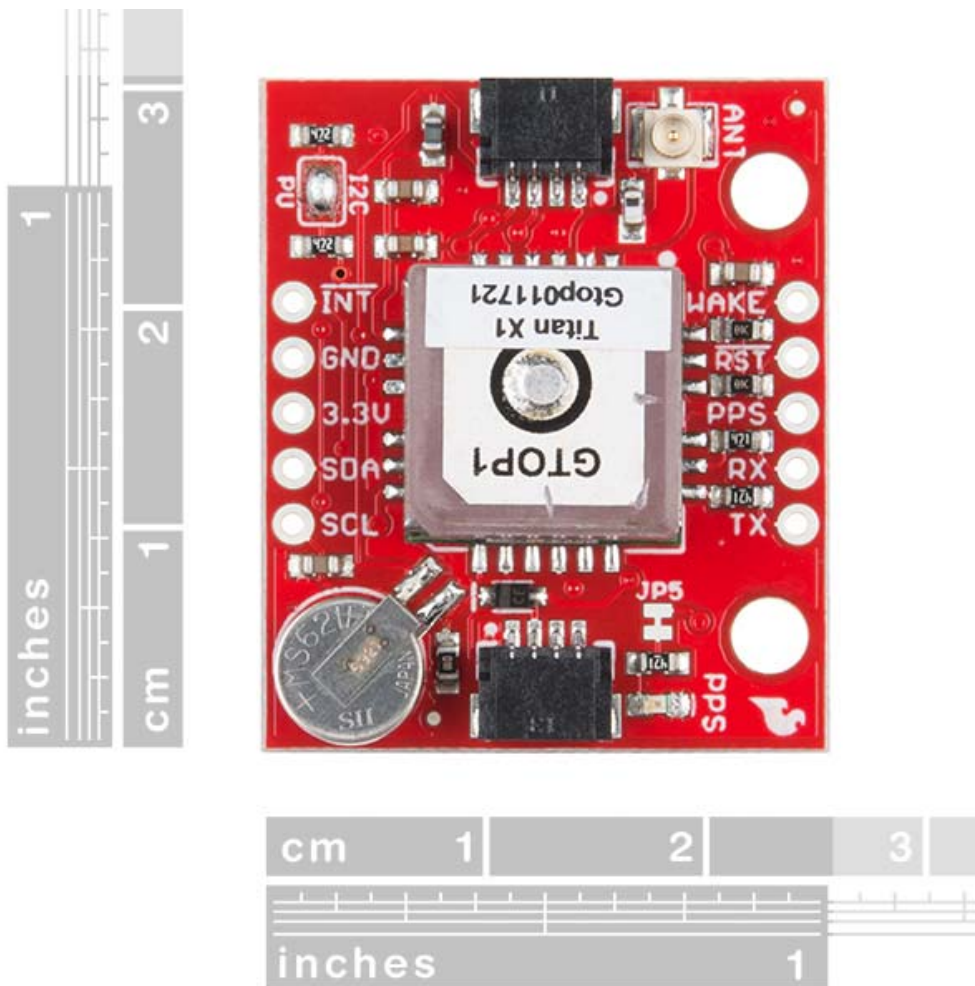
This GPS Breakout supports up to 210 PRN channels with 99 search channels and 33 simultaneous tracking channels. With support of GPS, GLONASS, QZSS, SBAS and more, the onboard XA1110 can provide even more accurate positioning in multiple locations. Additionally, the XA1110 GPS Breakout is configured with an onboard RTC battery that enables a warm-start functionality, giving the X1 just five seconds to first fix, as well as a U.FL connector that provides you the option to hook up an external antenna via a U.FL cable.

---

*The SparkFun Qwiic Connect System is an ecosystem of I<sup>2</sup>C sensors, actuators, shields and cables that make prototyping faster and less prone to error. All Qwiic-enabled boards use a common 1mm pitch, 4-pin JST connector. This reduces the amount of required PCB space, and polarized connections mean you can't hook it up wrong.*

## FEATURES

- 33 tracking/99 acquisition-channel GPS +GLONASS receiver
- Supports QZSS & SBAS (WAAS, EGNOS, MSAS, GAGAN)
- Sensitivity: -165dBm
- Update Rate: up to 10Hz
- 12 multi-tone active interference canceler
- 2x Qwiic connectors
- U.FL connector
- Onboard RTC battery



**Notice.** This product requires other products in order to function properly.  
See [essential products](#).

Essentials
<a href="#">Qwiic Cable - 100mm</a>
PRT-14427
<a href="#">SparkFun Qwiic Shield for Arduino</a>
DEV-14352
<a href="#">SparkFun RedBoard - Programmed with Arduino</a>
DEV-13975