



Chipsmall Limited consists of a professional team with an average of over 10 year of expertise in the distribution of electronic components. Based in Hongkong, we have already established firm and mutual-benefit business relationships with customers from,Europe,America and south Asia,supplying obsolete and hard-to-find components to meet their specific needs.

With the principle of "Quality Parts,Customers Priority,Honest Operation,and Considerate Service",our business mainly focus on the distribution of electronic components. Line cards we deal with include Microchip,ALPS,ROHM,Xilinx,Pulse,ON,Everlight and Freescale. Main products comprise IC,Modules,Potentiometer,IC Socket,Relay,Connector.Our parts cover such applications as commercial,industrial, and automotives areas.

We are looking forward to setting up business relationship with you and hope to provide you with the best service and solution. Let us make a better world for our industry!



## Contact us

Tel: +86-755-8981 8866 Fax: +86-755-8427 6832

Email & Skype: info@chipsmall.com Web: www.chipsmall.com

Address: A1208, Overseas Decoration Building, #122 Zhenhua RD., Futian, Shenzhen, China



## SINGLE BAND GLASS MOUNT

GPS glass mount single band antennas have the following specifications:

<b>Frequency:</b>	<b>1575.4 MHz</b>	<b>Gain:</b>	<b>1.5 dBi</b>
<b>Pattern:</b>	<b>Herispherical</b>	<b>LNA Gain:</b>	<b>26 dB ± 2 dB</b>
<b>Polarization:</b>	<b>Right-Hand Circular</b>	<b>VSWR:</b>	<b>1.5:1</b>
<b>Mounting:</b>	<b>Double Sided Tape</b>	<b>Voltage:</b>	<b>3 or 5 V DC</b>

Model	Size		Color	Cable	Connector
	H x L x W (In)				
GPSGMSMA	.2 x 3 x 1.2		Black	16.4' RG-174	SMA
GPSGMSMB	.2 x 3 x 1.2		Black	16.4' RG-174	SMB



## MULTI BAND GLASS MOUNT

GPS glass mount multi band antennas have the following specifications:

<b>Frequency:</b>	<b>824-960 / 1710-2170 / 1575.4 MHz</b>	<b>Gain:</b>	<b>2/4 dBi</b>
<b>Pattern:</b>	<b>Herispherical</b>	<b>LNA Gain:</b>	<b>26 dB ± 2 dB</b>
<b>Polarization:</b>	<b>Linear Verical/Omni</b>	<b>VSWR:</b>	<b>2.5:1/1.5:1</b>
<b>Mounting:</b>	<b>Double Sided Tape</b>	<b>Voltage:</b>	<b>3 or 5 V DC</b>

Model	Size		Color	Cable	Connector
	H x L x W (In)				
GPSGM800/2170FS	.3 x 2 x 4		Black	16.4' RG-174	FME/SMA



## GPS LOW PROFILE SINGLE BAND

GPS low profile single band antennas have the following specifications:

<b>Frequency:</b>	<b>1575.4 MHz</b>	<b>Gain:</b>	<b>5 dBic</b>
<b>Pattern:</b>	<b>Herispherical</b>	<b>LNA Gain:</b>	<b>28 dB ± 2 dB</b>
<b>Polarization:</b>	<b>Right-Hand Circular</b>	<b>VSWR:</b>	<b>2.0:1</b>
<b>Mounting:</b>	<b>NMO Mount</b>	<b>Voltage:</b>	<b>5 V DC</b>

Model	Size		Cable	Connector
	H x D (In)	Color		
GPSNMO01	1.3 x 2.9	White	Order Separately	Order Separately
GPSNMO02	1.3 x 2.9	Black	Order Separately	Order Separately
GPSNMO07	1.3 x 2.9	White	17' RG-58/U	SMB
GPSNMO08	1.3 x 2.9	Black	17' RG-58/U	SMB
GPSNMO09	1.3 x 2.9	White	17' RG-58/U	SMA
GPSNMO10	1.3 x 2.9	Black	17' RG-58/U	SMA



The most commonly used cable assembly/mount is the NMOHFUD (27 MHz to 6 GHz) with 17' of UD (RG-58/U Dual Shield).

1 800 ANTENNA (268-3662)

NOTE: Antennas are not to scale

GPSDM



## GPS SINGLE BAND DIRECT MOUNTS

*GPS single band direct mount antennas have the following specifications:*

<b>Frequency:</b>	<b>1575.4</b>	<b>Polarization:</b>	<b>Right-Hand Circular</b>
<b>Gain:</b>	<b>5 dBic</b>	<b>Coax:</b>	<b>17' RG-174</b>
<b>LNA Gain:</b>	<b>28 dB ± 2 dB</b>	<b>Voltage:</b>	<b>5 V DC</b>
<b>Pattern:</b>	<b>Hemispherical</b>	<b>Color:</b>	<b>Black</b>
<b>Mounting:</b>	<b>Direct Feed 5/8" hole</b>	<b>Size:</b>	<b>.07" H x 2.5" Dia</b>

Model	Connector
GPSDM02	MCX
GPSDM04	MMCX
GPSDM06	SMB
GPSDM08	SMA

## GPS COMBI WHIP DIRECT MOUNTS

*GPS combi whip direct mount antennas have the following specifications:*

<b>LNA Gain:</b>	<b>26 dB ± 2 dB</b>	<b>Pattern:</b>	<b>Hemispherical / Omni</b>
<b>Polarization:</b>	<b>Right-Hand Circular /Vertical</b>	<b>Coax:</b>	<b>16.4' RG-174 / 16.4' RG-174</b>
<b>Mounting:</b>	<b>Direct Feed 5/8" hole</b>	<b>Voltage:</b>	<b>5 V DC</b>
<b>Color:</b>	<b>Black</b>	<b>Base Size:</b>	<b>2" W x 2.3" L x 0.7" H</b>

GPSCW



GPSCW3E



Model	Frequency (MHz)	Gain (dBi/dBic)	Whip Length (In)	Connector
GPSCW1502	136-174 / 1575.42	2.14/5	22	SMA/SMB
GPSCW4501	406-512 / 1575.42	2.14/5	6.25	SMA/SMA
GPSCW4502	406-512 / 1575.42	2.14/5	6.25	SMA/SMB
GPSCW3E8001	806-896 / 1575.42	5/5	11.5	SMA/SMA
GPSCW3E8003	806-896 / 1575.42	5/5	11.5	FME/SMA

## GPS LTE DIRECT MOUNTS

Model	Frequency (MHz)	Gain (dBd/dBi)	Polarization	VSWR	Mounting	Voltage	Size	Cable	Conn
							H x Dia (In)		
GPSDM700/2500FFS	698-960/1710-2170/2300-2700	.9/3	Linear Vertical	2.0:1	3/4" Hole	3 or 5	3.5 x 4.16	17' RG-58	FME
	2400-2485/5150-5850	3.9/6	Linear Vertical					17' RG-58	FME
	1575.42	5 dBic	RHCP					17' RG-174	SMA



## GPS MULTI BAND DIRECT MOUNTS

**GPS multi band direct mount antennas have the following specifications:**

**Frequency:** 824-960 / 1710-2170 / 1575.4 MHz

**VSWR:** <2.0:1

**Gain:** 2 dBi / 2 dBi / 5 dBic

**LNA Gain:** 26 dB ± 2 dB

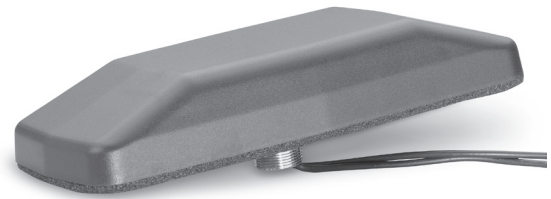
**Pattern:** Omni / Omni / Hemispherical

**Voltage:** 3 or 5 V DC

**Polarization:** Vertical / Vertical / Right-Hand Circular

**Coax:** 16.4' RG-174 / 16.4' RG-174

**Mounting:** Direct Feed 3/4" hole



Model	Size	Color	Connector
	L x W x D (In)		
GPSCP00	7.6 x 3.4 x 1.3	Black	TNC/SMA
GPSCP01	7.6 x 3.4 x 1.3	White	No Conn
GPSCP02	7.6 x 3.4 x 1.3	Black	No Conn/SMA
GPSCP03	7.6 x 3.4 x 1.3	White	No Conn/SMA
GPSCP04	7.6 x 3.4 x 1.3	Black	No Conn/SMB
GPSCP05	7.6 x 3.4 x 1.3	White	No Conn/SMB
GPSCP06	7.6 x 3.4 x 1.3	Black	SMA/SMA
GPSCO07	7.6 x 3.4 x 1.3	White	SMA/SMA
GPSCP08	7.6 x 3.4 x 1.3	Black	MPL/SMA
GPSCP09	7.6 x 3.4 x 1.3	White	MPL/SMA
GPSCP10	7.6 x 3.4 x 1.3	Black	TNC/BNC
GPSCWCP00	3.9 x 2.3 x 3.2	Black	TNC/SMA
GPSCWCP01	3.9 x 2.3 x 3.2	Black	No Conn/SMA
GPSCWCP02	3.9 x 2.3 x 3.2	Black	No Conn/SMB
GPSCWCP03	3.9 x 2.3 x 3.2	Black	SMA/MPL
GPSCWCP04	3.9 x 2.3 x 3.2	Black	SMA/SMA



1 800 ANTENNA (268-3662)

NOTE: Antennas are not to scale



## GPS LTE DIRECT MOUNTS

**NMOHFGPS mounts have the following specifications:**

<b>Frequency:</b>	1575.4 - 1576.4 MHz	<b>Gain:</b>	5 dBic
<b>Polarization:</b>	Right-Hand Circular / Vertical	<b>LNA Gain:</b>	26 dB ± 2 dB
<b>Cable:</b>	16.4' RG-174 (GPS)	<b>VSWR:</b>	Less than 2:1
	16.4' RG-58 (NMOHF)	<b>Voltage:</b>	3 or 5 V DC
<b>Size:</b>	.5 x 2 x 4.5	<b>Color:</b>	Black
<b>Mounting:</b>	5/8" Hole		

Model	Connectors
NMOHFGPSFMENOCNN	FME/No Connector
NMOHFGPSFMESMA	FME/SMA
NMOHFGPSNOCNN	No Connectors
NMOHFGPSSMASMA	SMA/SMA

**NOTE:** Specifications listed refer to GPS performance. Additional antenna specifications are dependent on the antenna mounted on the NMO side.

## SINGLE BAND MAGNETIC MOUNTS

**GPS single band magnetic mount antennas have the following specifications:**

<b>Frequency:</b>	1575.4 MHz	<b>Gain:</b>	5 dBic
<b>Pattern:</b>	Herispherical	<b>LNA Gain:</b>	26 dB ± 2 dB
<b>Polarization:</b>	Right-Hand Circular	<b>VSWR:</b>	Less than 2:1
<b>Cable:</b>	17' RG-174	<b>Voltage:</b>	5 V DC



GPS Single Band Mag Mount

Model	Size	Color	Connector
	H x L x W (In)		
GPS0002	0.5 x 1.75 x 1.5	Black	MCX
GPS0006	0.5 x 1.75 x 1.5	Black	SMB
GPS0008	0.5 x 1.75 x 1.5	Black	No Conn
GPS0010	0.5 x 1.75 x 1.5	Black	SMA
GPS0012	0.5 x 1.75 x 1.5	Black	BNC

## MULTI BAND MAGNETIC MOUNTS

**GPS Multi band magnetic mount antennas have the following specifications:**

<b>Frequency:</b>	824-960 / 1710-2170 / 1575.4 MHz
<b>Gain:</b>	2 dBi / 2 dBi / 5 dBic
<b>LNA Gain:</b>	26 dB ± 2 dB
<b>Pattern:</b>	Omni / Omni / Herispherical
<b>Polarization:</b>	Verticl / Vertical / Right-Hand Circular
<b>VSWR:</b>	Less than 2:1
<b>Cable:</b>	17' RG-174
<b>Voltage:</b>	3 or 5 V DC



GPS Multi Band Mag Mount

Model	Size	Color	Connector
	H x L x W (In)		
GPSCPMM00	1.3 x 7.6 x 3.4	Black	TNC/SMA
GPSCPMM02	1.3 x 7.6 x 3.4	Black	No Conn/SMA

## GPS MULTI BAND STEALTH BLADES

Model	Frequency (MHz)	Gain	Dimensions L x W x D (In)	Polarization	Voltage	Color	Coax	Connector
GPSSB800/2170FS	806 - 960	0 dBi	5.4 x 1.5 x .6	Linear Vert	3 or 5	Black	16.4' RG-174	FME
	1710 - 2170	0 dBi		RHCP			16.4' RG-174	SMA
	1575.4	26 (LNA)						



## GPS TIMING ANTENNA

Model	Frequency (MHz)	LNA Gain ( $\pm 2$ dB)	Dimensions H x W (In)	Polarization	Voltage (DC)	Color	Mounting	Connector
GPS0015	1575.42 $\pm$ 1.023	25	4 x 4.5	RHCP	4-15	White	Bracket	N Male

