



Chipsmall Limited consists of a professional team with an average of over 10 year of expertise in the distribution of electronic components. Based in Hongkong, we have already established firm and mutual-benefit business relationships with customers from,Europe,America and south Asia,supplying obsolete and hard-to-find components to meet their specific needs.

With the principle of “Quality Parts,Customers Priority,Honest Operation,and Considerate Service”,our business mainly focus on the distribution of electronic components. Line cards we deal with include Microchip,ALPS,ROHM,Xilinx,Pulse,ON,Everlight and Freescale. Main products comprise IC,Modules,Potentiometer,IC Socket,Relay,Connector.Our parts cover such applications as commercial,industrial, and automotives areas.

We are looking forward to setting up business relationship with you and hope to provide you with the best service and solution. Let us make a better world for our industry!



Contact us

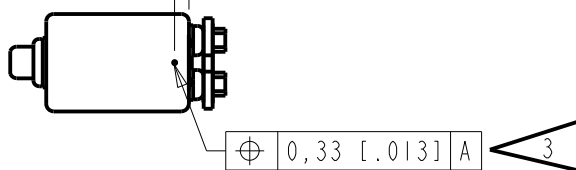
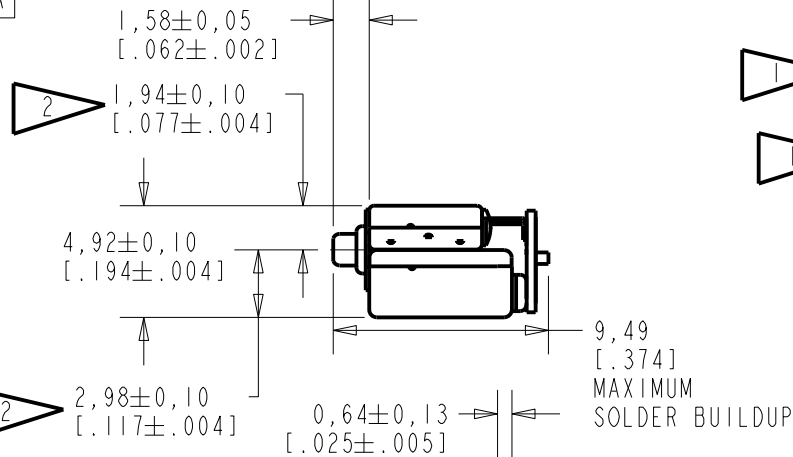
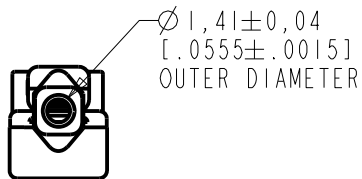
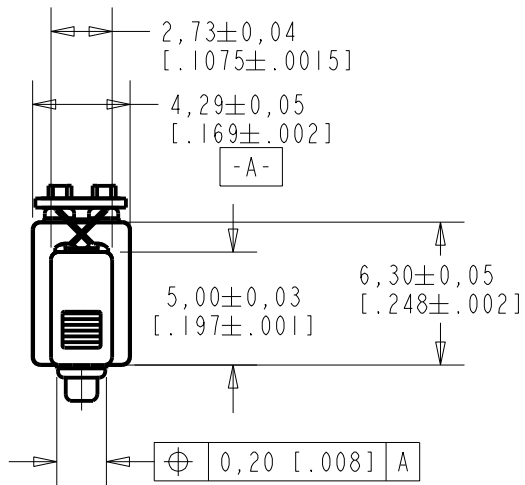
Tel: +86-755-8981 8866 Fax: +86-755-8427 6832

Email & Skype: info@chipsmall.com Web: www.chipsmall.com

Address: A1208, Overseas Decoration Building, #122 Zhenhua RD., Futian, Shenzhen, China

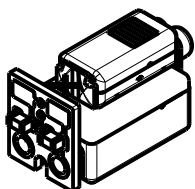
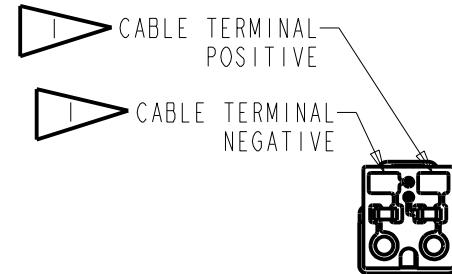


CO-30710-000
SHT 1.1



NOTES:

- 1 A POSITIVE GOING VOLTAGE AT THE POSITIVE TERMINAL RELATIVE TO THE NEGATIVE TERMINAL CAUSES A DECREASE IN PRESSURE AT THE SOUND OUTLETS.
- 2 LOCATED FROM TWO SURFACES FOR CUSTOMER CONVENIENCE. ONLY APPLICABLE FROM ONE SURFACE, NOT TO BE USED TOGETHER.
- 3 IT IS IMPORTANT TO KEEP HOLE CLEAN AND CLEAR AT ALL TIMES. CLOGGING THE HOLE WILL CAUSE PERFORMANCE CHANGES.



NOMINAL WEIGHT
.43 GRAM

DIMENSIONS IN MILLIMETERS [INCHES]

Revision	C.O. #	Implementation Date	RELEASE LEVEL	REVISION
			Active	A
A	C10111210	6-11-10		

SCALE:	3:1		DR. BY	DATE
DO NOT SCALE DRAWING			LSY	6-11-10
TITLE:	RECEIVER	CO-30710-000	CK. BY	DATE
	OUTLINE DRAWING	SHT 1.1	GJP	6-17-10
			APP. BY	DATE
			GJP	6-17-10

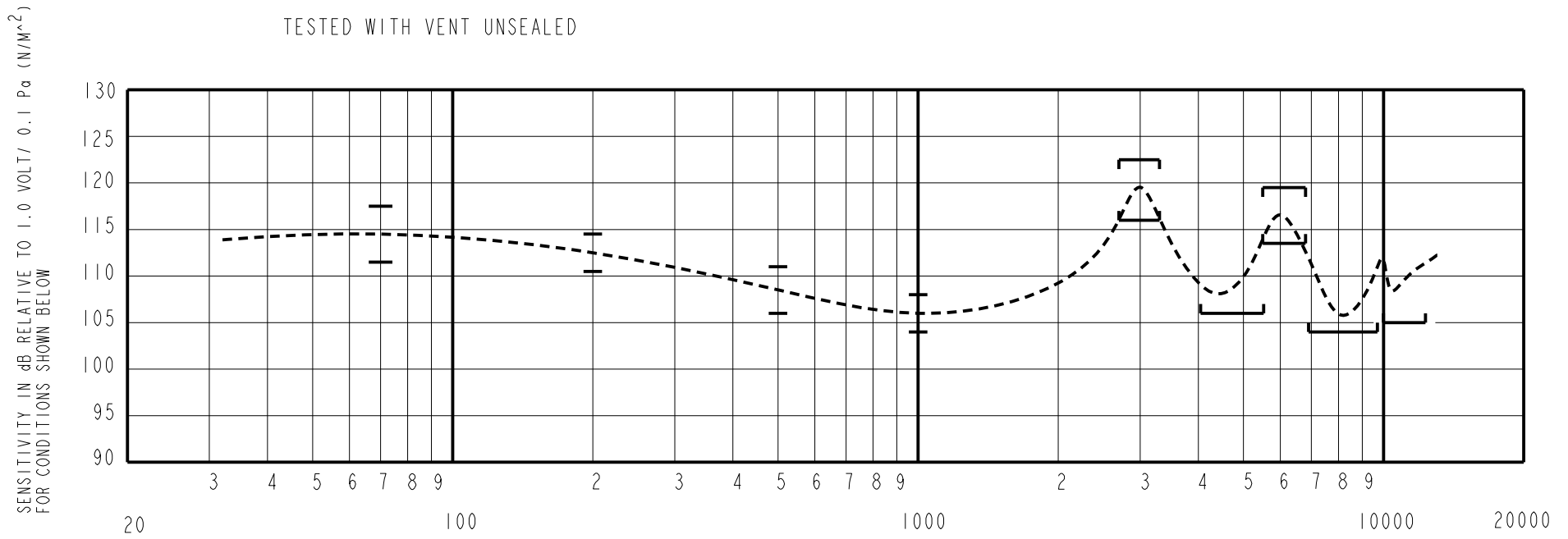
KNOWLES ELECTRONICS
ITASCA, ILLINOIS U.S.A.

UNDAMPED MAGNETIC BALANCED ARMATURE RECEIVERS INTENDED FOR USE AS THE HIGH AND LOW FREQUENCY DRIVERS IN A Hi Fi SYSTEM. THE GO RECEIVER COMBINES A WBFK AND ED RECEIVERS COUPLED THROUGH A CIRCUIT TO PROVIDE THE RESPONSE SHAPE.

NO DAMPING

GO-30710-000
SHEET 2.1

CONSTANT VOLTAGE DRIVE CONDITIONS
TESTED WITH VENT UNSEALED



ACOUSTICAL

SENSITIVITY
DEVICE WILL PRODUCE THE SPL LISTED BELOW UNDER TEST CONDITION IN TABLE 2.
NOMINAL SENSITIVITY AT 1kHz IS dB RELATIVE TO 20 μ Pa. ALL OTHER VALUES
IN dB RELATIVE TO THE SENSITIVITY AT 1kHz.

FREQUENCY (Hz)	MINIMUM	NOMINAL	MAXIMUM
70	+5.5	+8.5	+11.5
200	+4.5	+6.5	+8.5
500	0.0	+2.5	+5.0
1000	-2.0	106.0	+2.0
2700 - 3300	+10.5	+13.5	+16.5
4050 - 5450	0.0	---	---
5400 - 6800	+7.5	+10.5	+13.5
6900 - 9600	-7.0	---	---
10000 - 13000	-6.0	---	---

TABLE 1

TEST CONDITIONS

NOMINAL SOURCE VOLTAGE	0.146 V rms, 0 V DC BIAS
SOURCE IMPEDANCE	<1 Ohm
TUBING	7 X 2 mm + 0.188cc CAVITY
COUPLER CAVITY	IEC 60318-4("711")
TEST STATION	FCART

TABLE 2

ELECTRICAL

DC RESISTANCE	25.4 Ohms \pm 10%
IMPEDANCE @ 500 Hz	51.7 Ohms \pm 15%
IMPEDANCE @ 1kHz	90.0 Ohms \pm 15%

TABLE 3

MAXIMUM TOTAL HARMONIC DISTORTION
6% AT 1000 Hz AT 100 dB SPL

MECHANICAL

PORT LOCATION: 12S
SOLDER TYPE: SAC305(LEAD FREE)

TEMPERATURE:
OPERATING: SENSITIVITY AT 1K Hz WILL NOT VARY
MORE THAN +1/-3 dB FROM 17°C TO 63°C.
STORAGE: -40°C TO 63°C.

ISOLATION: CASE WILL BE ELECTRICALLY ISOLATED FROM THE COIL CIRCUIT.

Revision	C.O. #	Implementation Date	RELEASE LEVEL	REVISION
			Active	A
A	CI0111210	6-11-10		
WHEN TEST LIMITS ARE USED TO ESTABLISH INCOMING INSPECTION ACCEPTANCE/REJECTION CRITERIA, CORRELATION OF TEST EQUIPMENT WITH KNOWLES IS ALSO REQUIRED FOR ELIMINATION OF EQUIPMENT AND TEST METHOD VARIATION			DR. BY	DATE
TITLE: RECEIVER PERFORMANCE SPECIFICATION			LSY	6-11-10
			CK. BY	DATE
GO-30710-000 SHT 2.1			GJP	6-17-10
			APP. BY	DATE
			GJP	6-17-10

KNOWLES ELECTRONICS
ITASCA, ILLINOIS U.S.A.