



Chipsmall Limited consists of a professional team with an average of over 10 year of expertise in the distribution of electronic components. Based in Hongkong, we have already established firm and mutual-benefit business relationships with customers from,Europe,America and south Asia,supplying obsolete and hard-to-find components to meet their specific needs.

With the principle of “Quality Parts,Customers Priority,Honest Operation,and Considerate Service”,our business mainly focus on the distribution of electronic components. Line cards we deal with include Microchip,ALPS,ROHM,Xilinx,Pulse,ON,Everlight and Freescale. Main products comprise IC,Modules,Potentiometer,IC Socket,Relay,Connector.Our parts cover such applications as commercial,industrial, and automotives areas.

We are looking forward to setting up business relationship with you and hope to provide you with the best service and solution. Let us make a better world for our industry!



Contact us

Tel: +86-755-8981 8866 Fax: +86-755-8427 6832

Email & Skype: info@chipsmall.com Web: www.chipsmall.com

Address: A1208, Overseas Decoration Building, #122 Zhenhua RD., Futian, Shenzhen, China



120W Industrial Quarter Brick Converters

Features

- ◆ Standard Quarter Brick Footprint
- ◆ 9-36 or 18-36V Input
- ◆ Up to 91.5% Efficiency
- ◆ Up to 105°C baseplate temperatures
- ◆ 1,500VDC Isolation (2,250VDC or 3,000VDC option)



Key Market Segments & Applications



Specifications								
Model	GQA120							
Nominal Output Voltage (1)	VDC	5V	12V	15V	24V	28V	48V	
Input Voltage Range	VDC	9 - 36V					18 - 36V	
Input Current (Maximum)	A	17A						
Efficiency (100% load, 24V input)	%	90%	89%	89%	87%	89%	91.5%	
Output Voltage Adjustment	VDC	4.5 - 5.5V	10.8 - 13.2V	13.5 - 16.5V	21.6 - 26.4V	25.2 - 30.8V	45.6 - 52.8V	
Ripple & Noise (max) pk-pk	mV	150mV	180mV	200mV	250mV	250mV	300mV	
Line Regulation (typ)	%	0.05%	0.05%	0.05%	0.05%	0.05%	0.05%	
Load Regulation (max)	%	0.03%	0.03%	0.03%	0.03%	0.03%	0.03%	
Overcurrent Protection (typ)	A	37A	14.5A	12A	6.2A	5.1A	4A	
Overvoltage Protection (typ)	V	6.5V	15V	18V	32V	35V	54V	
Remote On/Off	-	Yes; Low = ON, Open = OFF						
Remote Sense	-	Yes			Not as standard			
Operating Temperature	°C	-40°C to +105°C						
Storage Temperature	°C	-55°C to +125°C						
Temperature regulation	%	0.5% across full temperature range						
Cooling	-	Conduction, convection or forced air						
Withstand Voltage	VDC	Input to Output 1,500VDC (-NP7 suffix: 2,250VDC, -0P7 suffix: 3,000VDC), Baseplate to Input or Output 1,500VDC. (-NP7 & -0P7 suffix: 2,250VDC)						
Isolation Resistance	MΩ	>10MΩ						
Safety Agency Certifications	-	UL60950-1, CSA60950-1, EN60950-1, CE Mark						
Weight (Typ)	g	85g (Flanged baseplate, open frame)						
Size (LxWxH)	in (mm)	Flanged version: 2.39 x 1.95 x 0.5" (60.6 x 49.5 x 12.7); Non-flanged version: 2.39 x 1.56 x 0.5" (60.6 x 39.5 x 12.7)						
Warranty	yrs	3 Years						

Note: See Installation Manual for full details, test methods of parameters and application notes

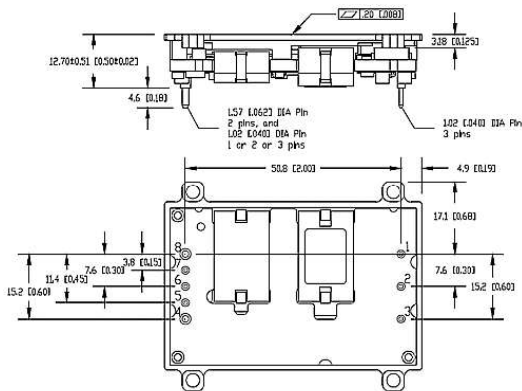
(1) Up to 50V input transient for 1 second

Model Selector

Model	Input Voltage (V)	Output Voltage (V)	Max Current (A)	Maximum Power (W)
GQA2W024A050V-007-R	9 - 36	5	24	120
GQA2W010A120V-007-R	9 - 36	12	10	120
GQA2W008A150V-007-R	9 - 36	15	8	120
GQA2W005A240V-007-R	9 - 36	24	5	120
GQA2W004A280V-007-R	9 - 36	28	4.28	120
GQA24003A480V-007-R	18 - 36	48	2.5	120

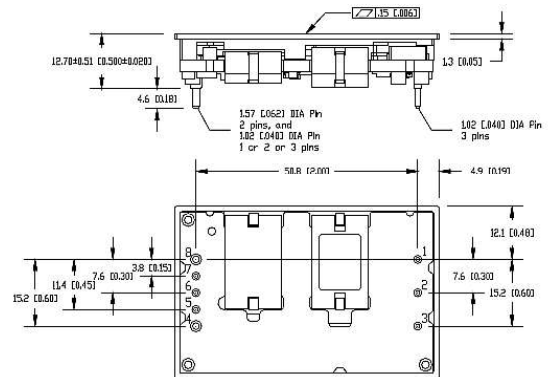
Outline Drawing

Flange Baseplate, Open Frame



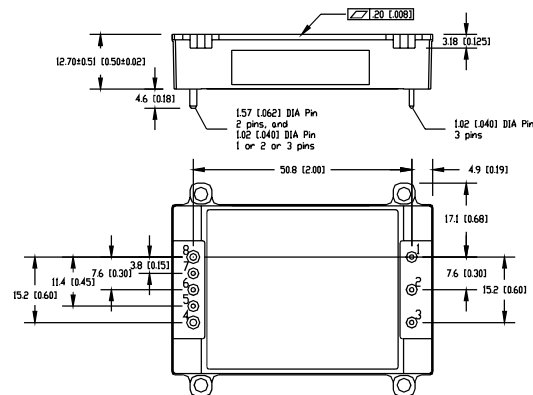
Outline Drawing

Non-Flange Baseplate, Open Frame



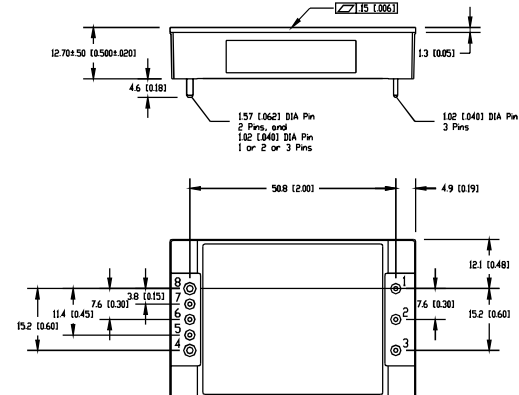
Outline Drawing

With Flange, Potted



Outline Drawing

No Flange, Potted



Options

Suffix	Description
-007-R	Flanged Baseplate, Open Frame
-N07-R	Non-Flanged Baseplate, Open Frame
-0P7-R	Flanged Baseplate, Enclosed With Potting, 3kV Input to Output Isolation
-NP7-R	Non-Flanged Baseplate, Enclosed With Potting

Standard Model *Contact factory for other Voltages or option codes

Pinout

Pin	Function	Pin	Function
1	Vin(+)	5	sense (-), select models
2	On/Off	6	Trim
3	Vin(-)	7	Sense (+), select models
4	Vo(-)	8	Vo(+)

For Additional Information, please visit
us.tdk-lambda.com/lp/products/gqa-series.htm

