



Chipsmall Limited consists of a professional team with an average of over 10 year of expertise in the distribution of electronic components. Based in Hongkong, we have already established firm and mutual-benefit business relationships with customers from,Europe,America and south Asia,supplying obsolete and hard-to-find components to meet their specific needs.

With the principle of “Quality Parts,Customers Priority,Honest Operation,and Considerate Service”,our business mainly focus on the distribution of electronic components. Line cards we deal with include Microchip,ALPS,ROHM,Xilinx,Pulse,ON,Everlight and Freescale. Main products comprise IC,Modules,Potentiometer,IC Socket,Relay,Connector.Our parts cover such applications as commercial,industrial, and automotives areas.

We are looking forward to setting up business relationship with you and hope to provide you with the best service and solution. Let us make a better world for our industry!



Contact us

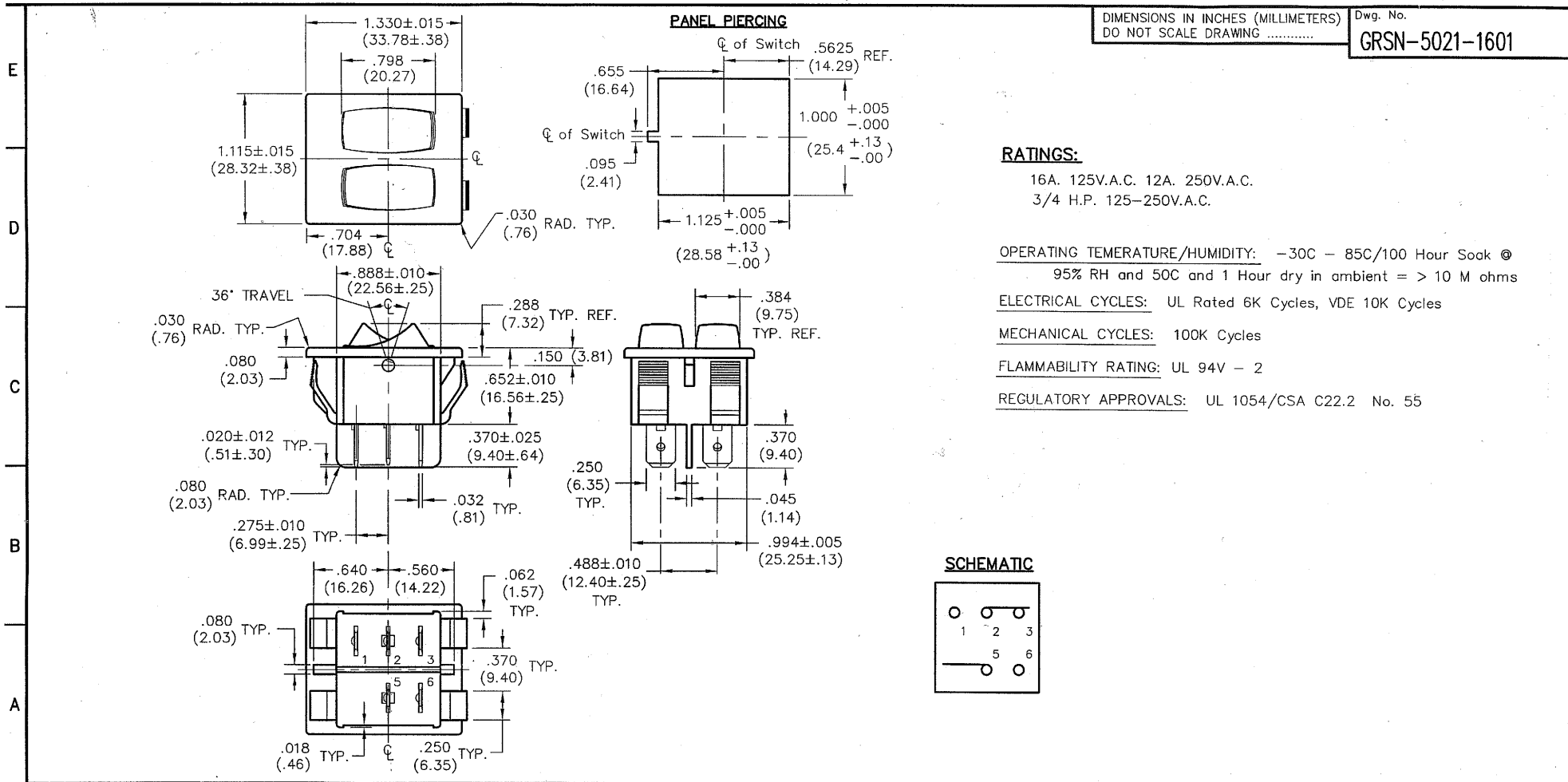
Tel: +86-755-8981 8866 Fax: +86-755-8427 6832

Email & Skype: info@chipsmall.com Web: www.chipsmall.com

Address: A1208, Overseas Decoration Building, #122 Zhenhua RD., Futian, Shenzhen, China



MASTER



FORM-B4	REVISIONS	0	1	2	3	4	5	6	7	8	9	10																																			
		RELEASED: DWG 3-11-2002 3/15/02	ADDED RATINGS TO DRAWING. .DVGW 10-26-2009																																												
		GG OCT 26 2009																																													
		<table border="1"> <tr> <td rowspan="4">PDF File Made</td> <td colspan="2">CW INDUSTRIES Southampton, Pa. 18966</td> <td colspan="2">Title: DUAL ROCKER SWITCH ASSEMBLY POLARIZED</td> </tr> <tr> <td colspan="4">TOLERANCES UNLESS OTHERWISE SPECIFIED</td> </tr> <tr> <td>2 Place Decimal ±.010</td> <td colspan="2">METRIC</td> <td></td> </tr> <tr> <td>3 Place Decimal ±.005</td> <td>1 Place Dec. ±.25mm</td> <td colspan="2">2 Place Dec. ±.13mm</td> </tr> <tr> <td colspan="2">Angles ±1°</td> <td colspan="2"></td> </tr> <tr> <td colspan="2">Made for: CW IND.</td> <td colspan="2">Division: SWITCH</td> </tr> <tr> <td colspan="2">Drawn by: DGW 3-11-2002</td> <td colspan="2">Dwg. No. GRSN-5021-1601</td> </tr> <tr> <td colspan="2">Checked by: G. Gold 3-13-02</td> <td colspan="2"></td> </tr> <tr> <td colspan="2">Approval: C. Adams 3/13/02</td> <td colspan="2"></td> </tr> </table>											PDF File Made	CW INDUSTRIES Southampton, Pa. 18966		Title: DUAL ROCKER SWITCH ASSEMBLY POLARIZED		TOLERANCES UNLESS OTHERWISE SPECIFIED				2 Place Decimal ±.010	METRIC			3 Place Decimal ±.005	1 Place Dec. ±.25mm	2 Place Dec. ±.13mm		Angles ±1°				Made for: CW IND.		Division: SWITCH		Drawn by: DGW 3-11-2002		Dwg. No. GRSN-5021-1601		Checked by: G. Gold 3-13-02				Approval: C. Adams 3/13/02	
PDF File Made	CW INDUSTRIES Southampton, Pa. 18966		Title: DUAL ROCKER SWITCH ASSEMBLY POLARIZED																																												
	TOLERANCES UNLESS OTHERWISE SPECIFIED																																														
	2 Place Decimal ±.010	METRIC																																													
	3 Place Decimal ±.005	1 Place Dec. ±.25mm	2 Place Dec. ±.13mm																																												
Angles ±1°																																															
Made for: CW IND.		Division: SWITCH																																													
Drawn by: DGW 3-11-2002		Dwg. No. GRSN-5021-1601																																													
Checked by: G. Gold 3-13-02																																															
Approval: C. Adams 3/13/02																																															