



Chipsmall Limited consists of a professional team with an average of over 10 year of expertise in the distribution of electronic components. Based in Hongkong, we have already established firm and mutual-benefit business relationships with customers from,Europe,America and south Asia,supplying obsolete and hard-to-find components to meet their specific needs.

With the principle of “Quality Parts,Customers Priority,Honest Operation,and Considerate Service”,our business mainly focus on the distribution of electronic components. Line cards we deal with include Microchip,ALPS,ROHM,Xilinx,Pulse,ON,Everlight and Freescale. Main products comprise IC,Modules,Potentiometer,IC Socket,Relay,Connector.Our parts cover such applications as commercial,industrial, and automotives areas.

We are looking forward to setting up business relationship with you and hope to provide you with the best service and solution. Let us make a better world for our industry!



Contact us

Tel: +86-755-8981 8866 Fax: +86-755-8427 6832

Email & Skype: info@chipsmall.com Web: www.chipsmall.com

Address: A1208, Overseas Decoration Building, #122 Zhenhua RD., Futian, Shenzhen, China





GS1011M and GS1500M Single-Site Programmers

PRODUCT OVERVIEW

The GainSpan GS1011M and GS1500M single-site flash programmers allow users to program GainSpan Wi-Fi modules, one at a time. Users can select and load either the WLAN or APP firmware depending on their requirements. The single-site programmer kit includes programmer hardware and software application/GUI to select and load firmware binaries into the module.

The programmer hardware includes a single site flash programming board with a Wi-Fi module socket and a USB/DB9 connector through which the programming software can access the module and program it.

The programmer kit includes simple GUI application software for ease of use in a production environment. The GUI allows selection of firmware binaries and displays module MAC address, programming success/failure and operation progress and status.

The programmer kit also includes a Quick Start Guide and a detailed User Guide that provides a description of the tool and the procedures for programming modules.

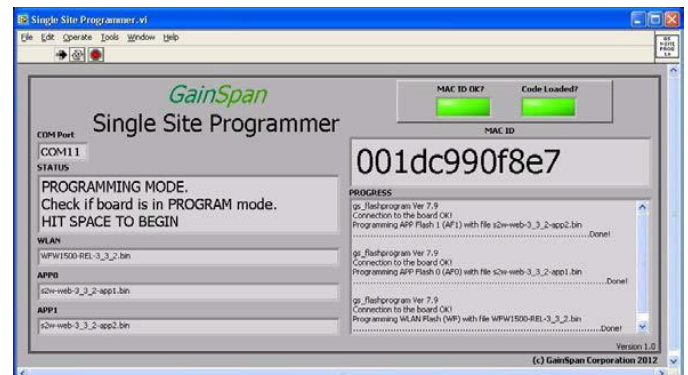


BENEFITS:

- **GainSpan single-site programmer for fast programming of Wi-Fi modules**
- **Simple, socketed hardware, designed for quick and easy loading of Wi-Fi modules**
- **Simple GUI for ease of programming in production environment**
- **Complete documentation package**

FEATURES:

- **Single-site programmers for GainSpan GS1011 SoC based Wi-Fi modules**
 - GS1011Mx
 - GS1011MEx/GS1500M
 - GS1011MxxS
- **Programming over UART serial interface**
 - UART speed up to 115 Kbps
- **Programmer kit includes**
 - Single-site programmer board
 - Programming Software and GUI
 - Cables
- **Software Features**
 - Programmer application and GUI
 - Allows selection of WLAN or APP firmware binaries via GUI or using a configuration file in production environment
 - GUI displays MAC ID, COM port selection, programming status and programming success/failure



SINGLE-SITE PROGRAMMER HARDWARE SPECIFICATION

Feature	Description
Socket for RF Module	Sockets for GS1011Mlx, GS1011MEx, GS1011MxxS or GS1500M Wi-Fi Modules
Power Source	3.3V DC power jack
Power on/off switch	Turn power on/off
Run/Program switch	Turned to "Program" for programming module
Connection to PC/Laptop	DB9 null modem or USB cable

SINGLE-SITE PROGRAMMER ORDERING INFORMATION

ITEM	PART NUMBER	Description
GS1011Mlx Single Site Programmer	GS1011MI-PGM1	Used for programming the GS1011Mlx Wi-Fi modules
GS1011MEx Single Site Programmer	GS1011ME-PGM1	Used for programming the GS1011MEx Wi-Fi modules
GS1011MxxS Single Site Programmer	GS1011MS-PGM1	Used for programming the GS1011MxxS Wi-Fi modules
GS1500M Single Site Programmer	GS1500M-PGM1	Used for programming the GS1500M Wi-Fi modules