



Chipsmall Limited consists of a professional team with an average of over 10 year of expertise in the distribution of electronic components. Based in Hongkong, we have already established firm and mutual-benefit business relationships with customers from,Europe,America and south Asia,supplying obsolete and hard-to-find components to meet their specific needs.

With the principle of "Quality Parts,Customers Priority,Honest Operation,and Considerate Service",our business mainly focus on the distribution of electronic components. Line cards we deal with include Microchip,ALPS,ROHM,Xilinx,Pulse,ON,Everlight and Freescale. Main products comprise IC,Modules,Potentiometer,IC Socket,Relay,Connector.Our parts cover such applications as commercial,industrial, and automotives areas.

We are looking forward to setting up business relationship with you and hope to provide you with the best service and solution. Let us make a better world for our industry!



## Contact us

Tel: +86-755-8981 8866 Fax: +86-755-8427 6832

Email & Skype: info@chipsmall.com Web: www.chipsmall.com

Address: A1208, Overseas Decoration Building, #122 Zhenhua RD., Futian, Shenzhen, China





**SPECIFICATIONS**

Rating: 50mA @ 50 VDC  
 Electrical Life: 100,000 cycles typical  
 Contact Resistance: 50mΩ initial @ 2-4 VDC  
 100mA for both silver and gold plated contacts  
 Insulation Resistance: 100MΩ min.  
 Dielectric Strength: 1,000 Vrms at sea level  
 Operating Force: 130 ± 50 gf, 160 ± 50 gf, 300 ± 50 gf  
 Packaging: Through-hole in tubes

**MATERIALS**

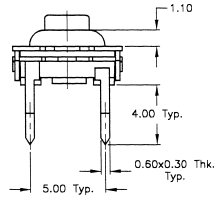
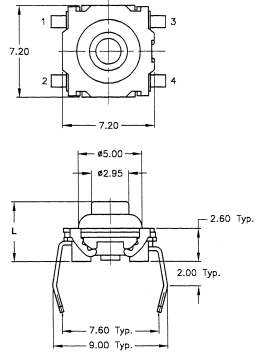
Housing: Liquid Crystal Polymer (LCP)  
 Actuator: Liquid Crystal Polymer (LCP)  
 Cover: Tin plated steel or stainless steel  
 Seal: Silicon rubber  
 Contacts: Silver plated phosphor bronze, gold over nickel phosphor bronze  
 Terminals: Silver plated copper alloy, gold over nickel copper alloy

**HOW TO ORDER**

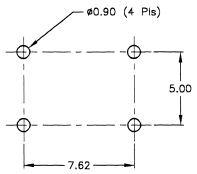
Series	Model No.	Actuator Length	Operating Force	Contact Material	Termination
<b>GS</b>	None = Standard E = Earth Ground R = Right Angle	4.70 5.20 6.34* 6.84* 6.90 8.54* 10.00 11.54*	F130 F160 F300	Q = Silver R = Gold	P = PC PIN G = Gull Wing

\*Actuator length for right angle version only.

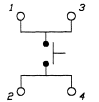
SPECIFICATIONS SUBJECT TO CHANGE WITHOUT NOTICE.



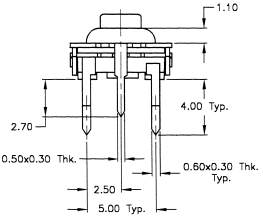
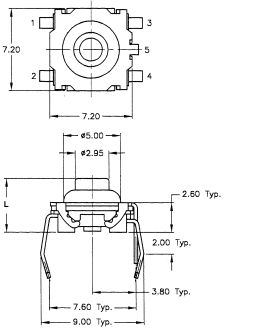
**P.C. MOUNTING**



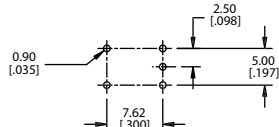
**Schematic**



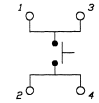
**EARTH GROUND**



**P.C. MOUNTING**



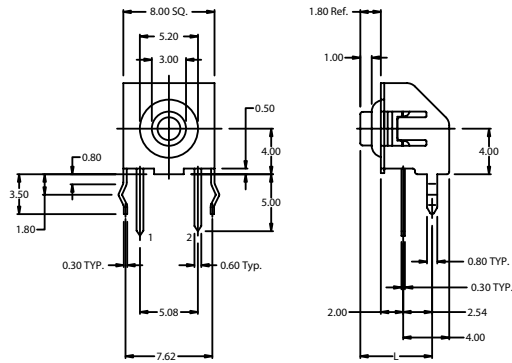
**Schematic**



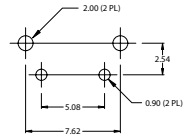
PROCESS SEALED TACT SWITCHES



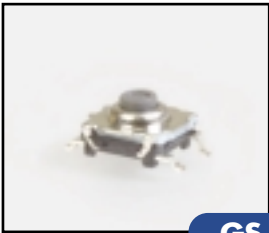
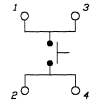
**GSR**



P.C. MOUNTING

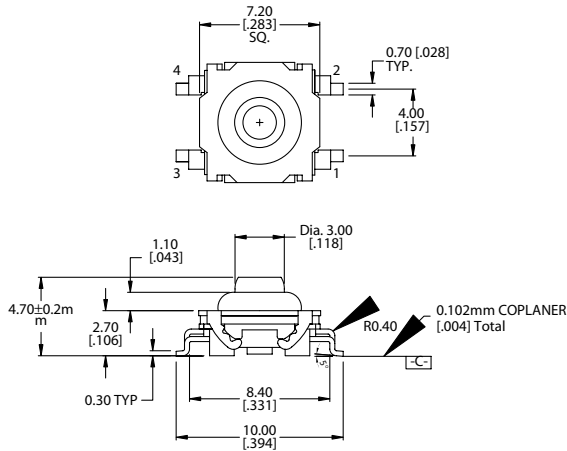


Schematic

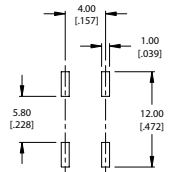


**GS**

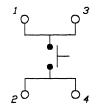
**SMT**



P.C. MOUNTING



Schematic



SPECIFICATIONS SUBJECT TO CHANGE WITHOUT NOTICE.