



Chipsmall Limited consists of a professional team with an average of over 10 year of expertise in the distribution of electronic components. Based in Hongkong, we have already established firm and mutual-benefit business relationships with customers from,Europe,America and south Asia,supplying obsolete and hard-to-find components to meet their specific needs.

With the principle of “Quality Parts,Customers Priority,Honest Operation,and Considerate Service”,our business mainly focus on the distribution of electronic components. Line cards we deal with include Microchip,ALPS,ROHM,Xilinx,Pulse,ON,Everlight and Freescale. Main products comprise IC,Modules,Potentiometer,IC Socket,Relay,Connector.Our parts cover such applications as commercial,industrial, and automotives areas.

We are looking forward to setting up business relationship with you and hope to provide you with the best service and solution. Let us make a better world for our industry!



Contact us

Tel: +86-755-8981 8866 Fax: +86-755-8427 6832

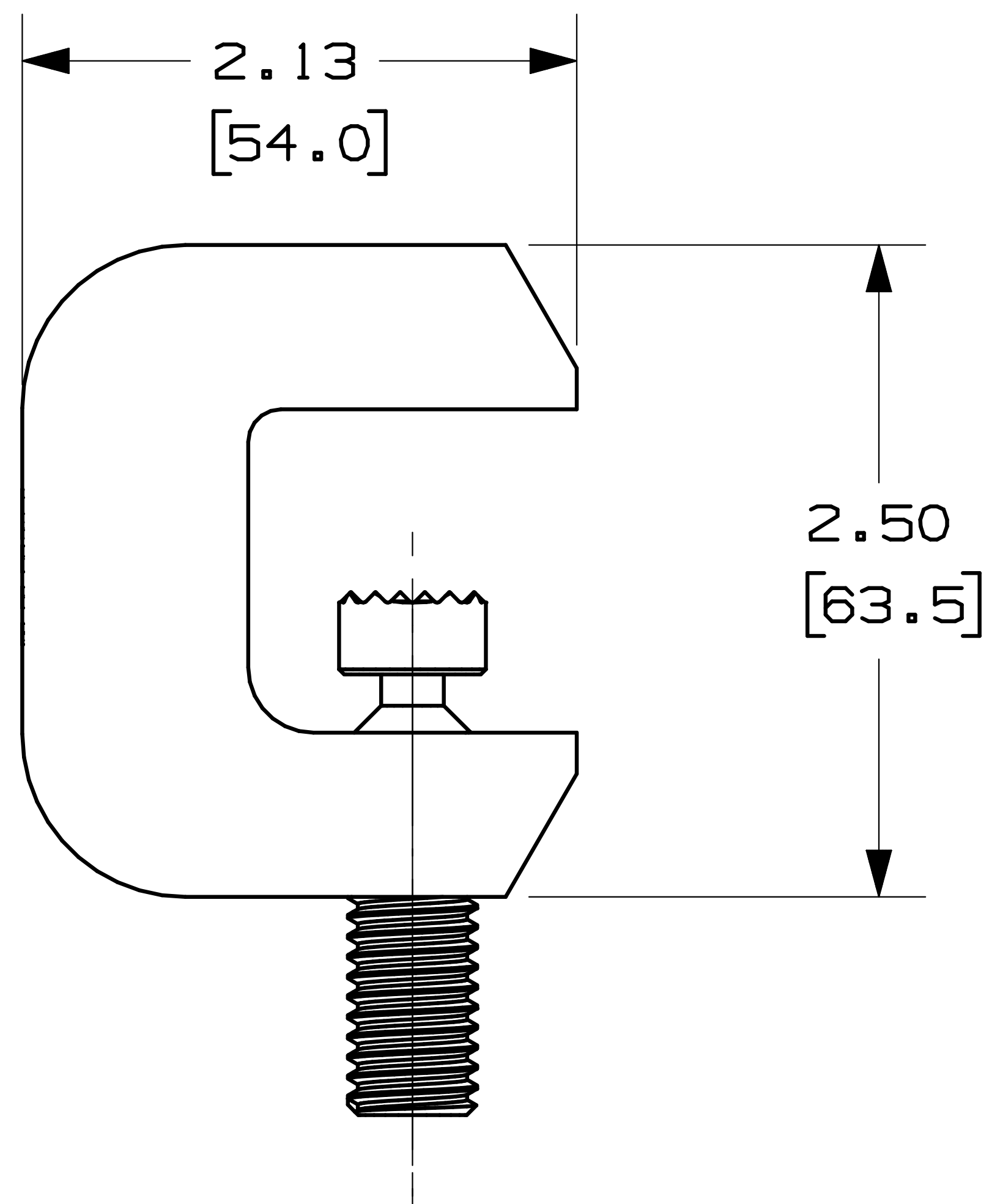
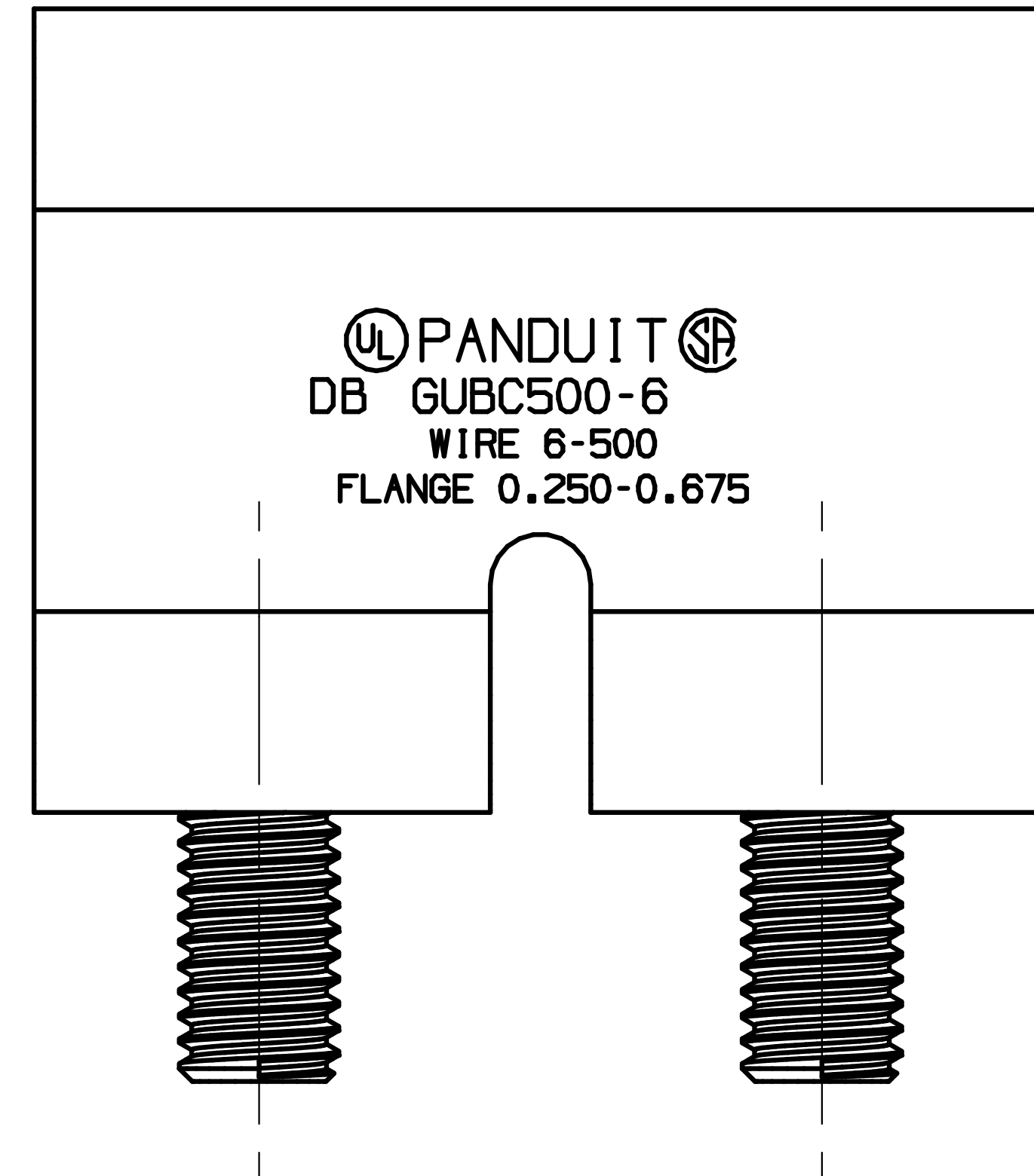
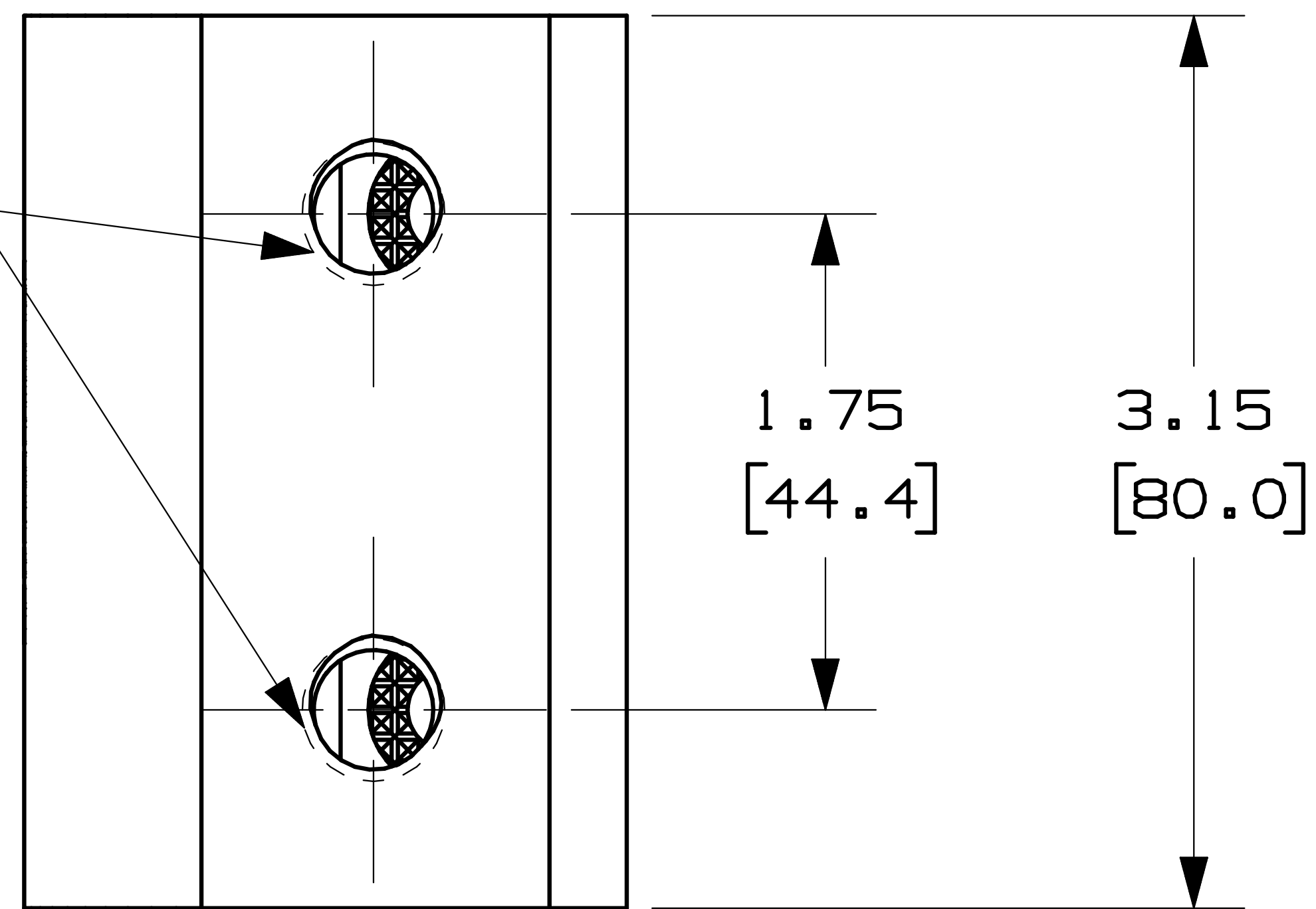
Email & Skype: info@chipsmall.com Web: www.chipsmall.com

Address: A1208, Overseas Decoration Building, #122 Zhenhua RD., Futian, Shenzhen, China



THIS COPY IS PROVIDED ON A RESTRICTED BASIS AND IS NOT TO BE USED IN ANY WAY DETRIMENTAL TO THE INTERESTS OF PANDUIT CORP.

1/2-13 THREAD
 -FOR USE WITH 1/2" STUD HOLE, 1 3/4" SPACING,
 2 HOLE COMPRESSION LUGS



UL PANDUIT
 DB GUBC500-6
 WIRE 6-500
 FLANGE 0.250-0.675

NOTES:

1. DIMENSIONS IN PARENTHESIS ARE MILLIMETERS.
2. FITS WIDE RANGE OF STANDARD (ANGLED) AND WIDE FLANGE (PARALLEL) STRUCTURAL STEEL BEAMS.
3. PROVIDES MOUNTING PAD SUITABLE FOR 2 HOLE COMPRESSION LUG.
4. UL 467 LISTED AND CSA 22.2 CERTIFIED FOR GROUNDING AND BONDING SUITABLE FOR DIRECT BURIAL IN EARTH OR CONCRETE.
5. PRE-APPLIED ANTIOXIDANT COMPOUND ENSURES A HIGH QUALITY MECHANICAL AND ELECTRICAL BOND, SPEEDING INSTALLATION.
6. HARDWARE KIT (GLMHK) SOLD SEPERATLEY FOR MOUNTING COMPRESSION LUG TO BEAM CLAMP.
7. MEETS IEEE STD 837-2002.

PANDUIT PART NUMBER	COPPER CONDUCTOR SIZE RANGE AWG - [MM]	FLANGE THICKNESS IN [MM]	THREAD SIZE FOR LUG ATTACHMENT	HEX SIZE	STD. PKG QTY
GUBC500-6	#6 AWG - 500 KCMIL (16-240 SQ MM)	.250-.675 [6.3-17.1]	1/2-13	1/4	1

CAD FILENAME/LAYERS N10725AE_DS_GUBC500-6_00A

PANDUIT CORP TINLEY PARK, ILLINOIS
 UNIVERSAL BEAM GROUNDING CLAMP (GUBC500-6)
 CUSTOMER DRAWING

UNLESS OTHERWISE SPECIFIED, DIMENSIONAL TOLERANCES ARE:
 (.X) ± .03
 (.XX) ± .03
 (.XXX) ± .005
 ANGLES ± 1°

UNLESS OTHERWISE SPECIFIED, ALL DIMENSIONS ARE GIVEN IN INCHES, THIRD ANGLE PROJECTION

DRAWN BY JHNU

MAT'L:

SCALE NONE

DATE 4/08

HIGH CONDUCTIVITY COPPER

DRAWING NO.

C41751

DWG

B

SIZE

REV	DATE	BY	CHK	DESCRIPTION	ECN	CUST
00	4/08	JHNU	RGB	DRAWING RELEASED		