



Chipsmall Limited consists of a professional team with an average of over 10 year of expertise in the distribution of electronic components. Based in Hongkong, we have already established firm and mutual-benefit business relationships with customers from,Europe,America and south Asia,supplying obsolete and hard-to-find components to meet their specific needs.

With the principle of “Quality Parts,Customers Priority,Honest Operation,and Considerate Service”,our business mainly focus on the distribution of electronic components. Line cards we deal with include Microchip,ALPS,ROHM,Xilinx,Pulse,ON,Everlight and Freescale. Main products comprise IC,Modules,Potentiometer,IC Socket,Relay,Connector.Our parts cover such applications as commercial,industrial, and automotives areas.

We are looking forward to setting up business relationship with you and hope to provide you with the best service and solution. Let us make a better world for our industry!



Contact us

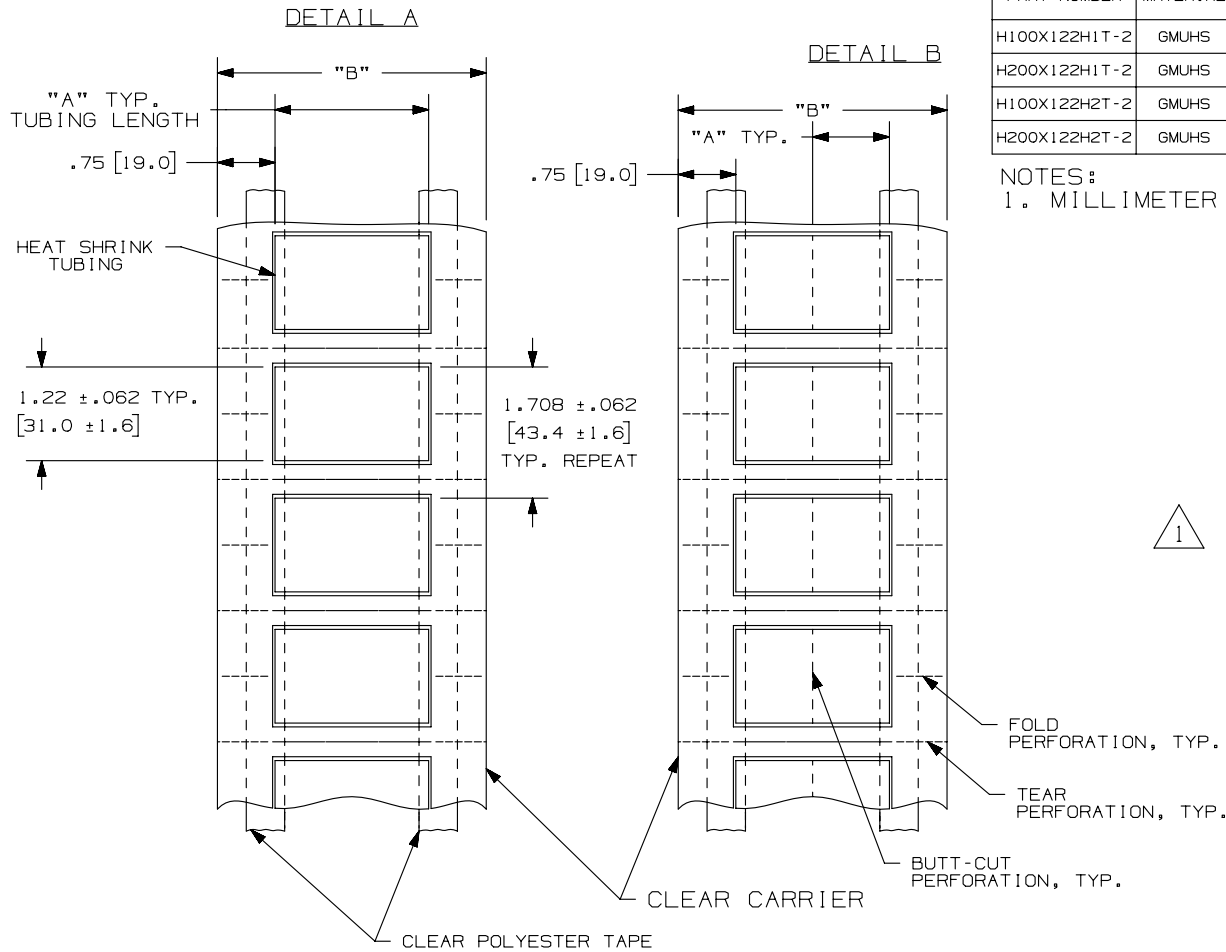
Tel: +86-755-8981 8866 Fax: +86-755-8427 6832

Email & Skype: info@chipsmall.com Web: www.chipsmall.com

Address: A1208, Overseas Decoration Building, #122 Zhenhua RD., Futian, Shenzhen, China

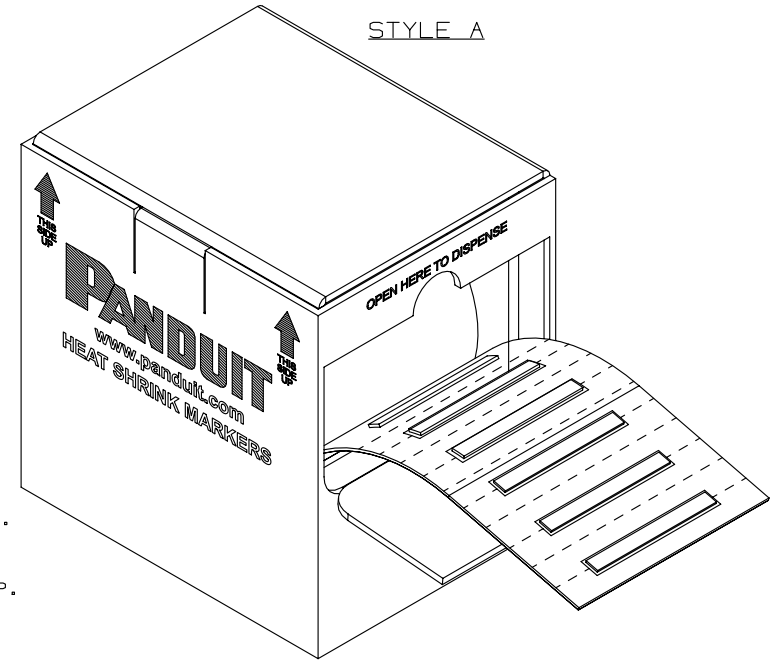


THIS COPY IS PROVIDED ON A RESTRICTED BASIS AND IS NOT TO BE USED IN ANY WAY DETRIMENTAL TO THE INTERESTS OF PANDUIT CORP.



PART NUMBER	MATERIAL	SEE DETAIL	"A" +/- .062	"B" +/- .062	INSIDE NOMINAL DIA.	MARKER ACROSS	TUBING COLOR	PKG. QTY.	SEE STYLE
H100X122H1T-2	GMUHS	B	1.00 [25.4]	3.50 [88.9]	3/4 in. [19.0 mm]	2	WHITE	500	A
H200X122H1T-2	GMUHS	A	2.00 [50.8]			1	WHITE	250	A
H100X122H2T-2	GMUHS	B	1.00 [25.4]	3.50 [88.9]	3/4 in. [19.0 mm]	2	YELLOW	500	A
H200X122H2T-2	GMUHS	A	2.00 [50.8]			1	YELLOW	250	A

NOTES:
1. MILLIMETER ARE IN [].



REV	DATE	BY	CHK	APR	DESCRIPTION	ECN
2	1/22/14	RVU	SEWH	MSAD	UPDATE THE CURRENT PANDUIT LOGO.	GAECN01410
1	8/21/09	RVU		SCWE	CHANGING PKG. QTY. TO ALLOW ROLL TO FIT INTO STD. PKG. 500 WAS 1000. 250 WAS 500.	5832
0	7/7/09	RVU		SCWE	DRAWING RELEASE.	5791

TITLE	
H***X122H*T-2 TWO-SIDED HEAT SHRINK LABEL CUSTOMER DRAWING	
ITEM REVISION NAME	100472XF/03
DATASET FILE NAME	100472XF_DC_C10742/03C
UNLESS OTHERWISE SPECIFIED, DIMENSIONAL TOLERANCES ARE: IN [mm]	
.x ± .12 [3.05]	.xxx ± .020 [5.08]
.xx ± .062 [1.57]	ANGLES ±
THIRD ANGLE PROJECTION	
DRAWN BY	RVU
DATE	7/7/09
CHK	SCWE
SCALE	NTS
MATERIAL:	
HEAT SHRINK TUBING, GMUHS31	
DRAWING NUMBER:	
C10642	
DRAWN BY	RVU
DATE	7/7/09
CHK	SCWE
SCALE	NTS
SHT 1 OF 1	
A	

D10100DA/16