



Chipsmall Limited consists of a professional team with an average of over 10 year of expertise in the distribution of electronic components. Based in Hongkong, we have already established firm and mutual-benefit business relationships with customers from,Europe,America and south Asia,supplying obsolete and hard-to-find components to meet their specific needs.

With the principle of “Quality Parts,Customers Priority,Honest Operation,and Considerate Service”,our business mainly focus on the distribution of electronic components. Line cards we deal with include Microchip,ALPS,ROHM,Xilinx,Pulse,ON,Everlight and Freescale. Main products comprise IC,Modules,Potentiometer,IC Socket,Relay,Connector.Our parts cover such applications as commercial,industrial, and automotives areas.

We are looking forward to setting up business relationship with you and hope to provide you with the best service and solution. Let us make a better world for our industry!



Contact us

Tel: +86-755-8981 8866 Fax: +86-755-8427 6832

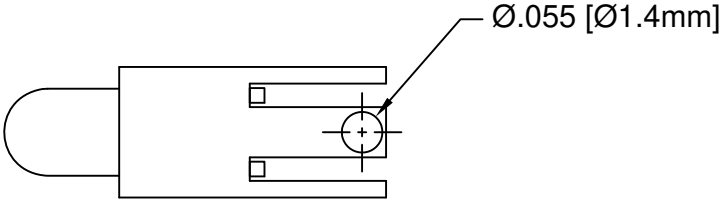
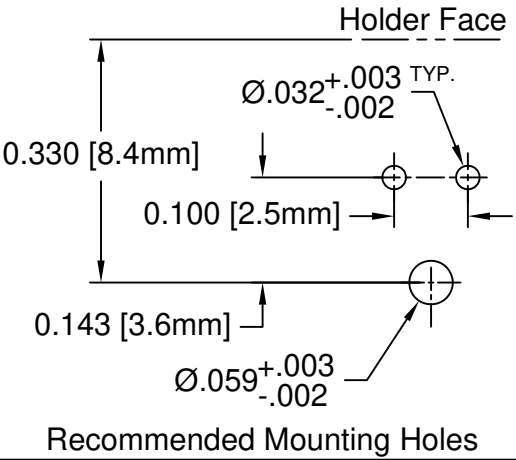
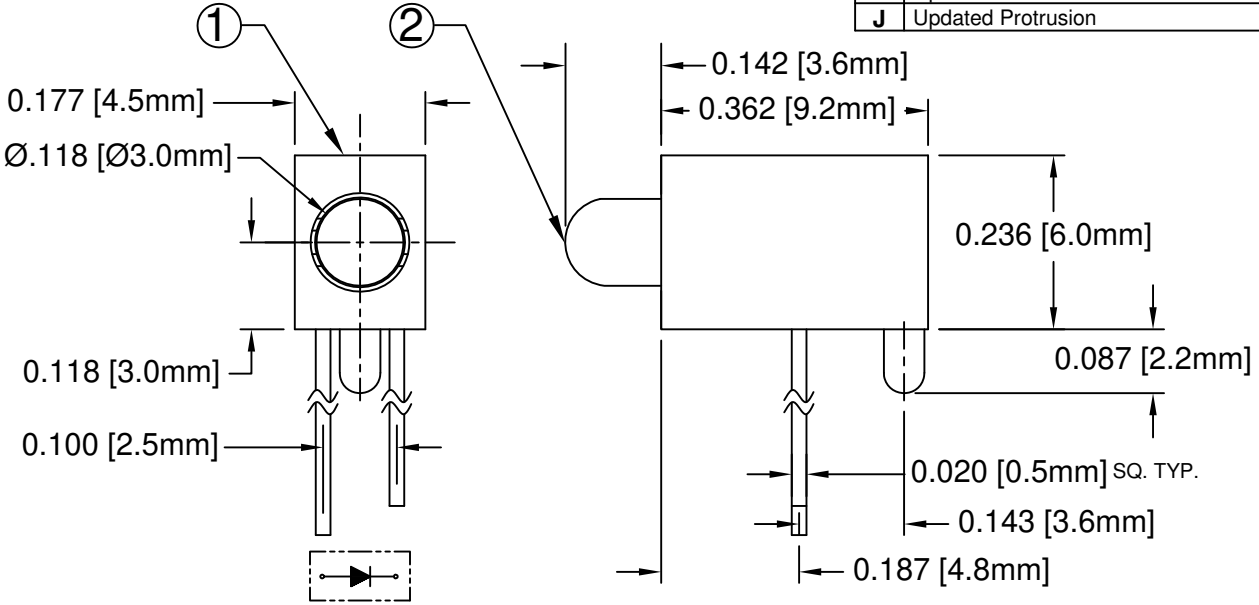
Email & Skype: info@chipsmall.com Web: www.chipsmall.com

Address: A1208, Overseas Decoration Building, #122 Zhenhua RD., Futian, Shenzhen, China




ITEM	Q'TY	PART NUMBER	PART DESCRIPTION
1	1	H-125C-LP	T-1 (3mm) LED Holder, 90° Mount
2	1	3XX-S	T-1 (3mm) N-Flange Shouldered LED, See Page 2

REV.	DESCRIPTION	DATE	APPROVED
D	Add Note Uncut Leads	01/02/07	M. C.
E	Updated Protrusion and LEDs to Shouldered	03/12/08	M. C.
F	Updated Protrusion	04/04/08	M. C.
G	LED Spec Upgrade, Updated Locating Post	07/10/08	M. C.
H	Updated Protrusion	04/29/13	M. C.
J	Updated Protrusion	11/23/15	J. C.




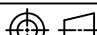
ABSOLUTE MAXIMUM RATINGS (Ta=25° C)

REVERSE VOLTAGE	5V
REVERSE CURRENT	100uA
OPERATING TEMPERATURE RANGE	-25° C - 85° C
STORAGE TEMPERATURE	-30° C - 100° C
LEAD SOLDERING TEMPERATURE(1/16" FROM BODY)	260° C FOR 5 SECONDS

STANDARD TOLERANCE (UNLESS OTHERWISE SPECIFIED)		 4 THOMAS, IRVINE, CA. 92618 TEL: (949) 951-8808 FAX: (949) 951-3974	
DECIMALS	ANGULAR		
.X ± .1	X° ± 1°		
.XX ± .02			
.XXX ± .010			
DESIGNED: David Green	DATE: 10/23/02	TITLE: T-1 (3MM) 90°SINGLE-LEVEL LED LOCATOR PIN LED ASSY	
CHECKED: M. Chen	DATE: 10/23/02	PART NO: H125CXX-LP	REVISION: J
		CAGE CODE : 32559	SHEET # 1 OF 2
CAD GENERATED DOCUMENT. DO NOT MEASURE DRAWING.			

REV.	DESCRIPTION	DATE	APPROVED
	SEE SHEET#1.		

LED Assy. No.	Peak Wave Length λp(nm)	Emitted Color	Lens Appearance	Electro-Optical Data				Viewing Angle 2 θ ½ (Deg)	LED P/N
				If (mA)	Vf (V)		Iv (mcd)		
				Max.	Typ.	Max.	Typ.		
STANDARD				Data @ 20mA					
H125CBWD-LP	430	BLUE	DIFFUSED	25	4.0	4.5	10	40	3BWD-S
H125CGD-LP	568	GREEN	DIFFUSED	30	2.1	2.8	25	40	3GD-S
H125CYD-LP	590	YELLOW	DIFFUSED	30	2.0	2.8	20	40	3YD-S
H125CHD-LP	625	HE RED	DIFFUSED	30	2.0	2.8	30	40	3HD-S
H125CRD-LP	700	RED	DIFFUSED	20	2.1	2.8	2	40	3RD-S
H125CSRDL-LP	645	SUPER RED	DIFFUSED	30	1.7	2.4	40	40	3SRD-S
LOW CURRENT				Data @ 2mA					
H125CGDL-LP	568	GREEN	DIFFUSED	7	2.1	2.6	2	40	3GDL-S
H125CYDL-LP	590	YELLOW	DIFFUSED	7	2.0	2.6	2	40	3YDL-S
H125CHDL-LP	625	HE RED	DIFFUSED	7	2.0	2.6	3	40	3HDL-S
5 VOLT				Data @ 5V					
H125CGD5V-LP	568	GREEN	DIFFUSED	8	-	5.0	25	40	3GD5V-S
H125CYD5V-LP	590	YELLOW	DIFFUSED	8	-	5.0	20	40	3YD5V-S
H125CHD5V-LP	625	HE RED	DIFFUSED	8	-	5.0	30	40	3HD5V-S

STANDARD TOLERANCE (UNLESS OTHERWISE SPECIFIED) <u>±10% ALL VALUES</u>		ANGULAR X° ± 5°		 4 THOMAS, IRVINE, CA. 92618 TEL: (949) 951-8808 FAX: (949) 951-3974	
				TITLE: T-1 (3MM) 90°SINGLE-LEVEL LED LOCATOR PIN LED ASSY	
DESIGNED: David Green		DATE: 10/23/02		PART NO: H125CXX-LP	
CHECKED: M. Chen		DATE: 10/23/02		REVISION: J	
				CAGE CODE : 32559 SHEET # 2 OF 2	
CAD GENERATED DOCUMENT. DO NOT MEASURE DRAWING.					