



Chipsmall Limited consists of a professional team with an average of over 10 year of expertise in the distribution of electronic components. Based in Hongkong, we have already established firm and mutual-benefit business relationships with customers from,Europe,America and south Asia,supplying obsolete and hard-to-find components to meet their specific needs.

With the principle of “Quality Parts,Customers Priority,Honest Operation,and Considerate Service”,our business mainly focus on the distribution of electronic components. Line cards we deal with include Microchip,ALPS,ROHM,Xilinx,Pulse,ON,Everlight and Freescale. Main products comprise IC,Modules,Potentiometer,IC Socket,Relay,Connector.Our parts cover such applications as commercial,industrial, and automotives areas.

We are looking forward to setting up business relationship with you and hope to provide you with the best service and solution. Let us make a better world for our industry!



## Contact us

Tel: +86-755-8981 8866 Fax: +86-755-8427 6832

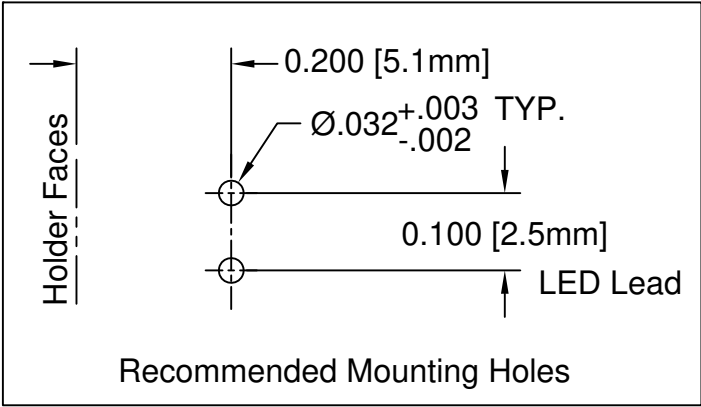
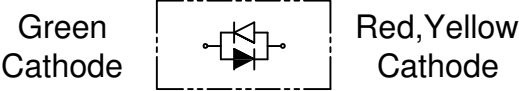
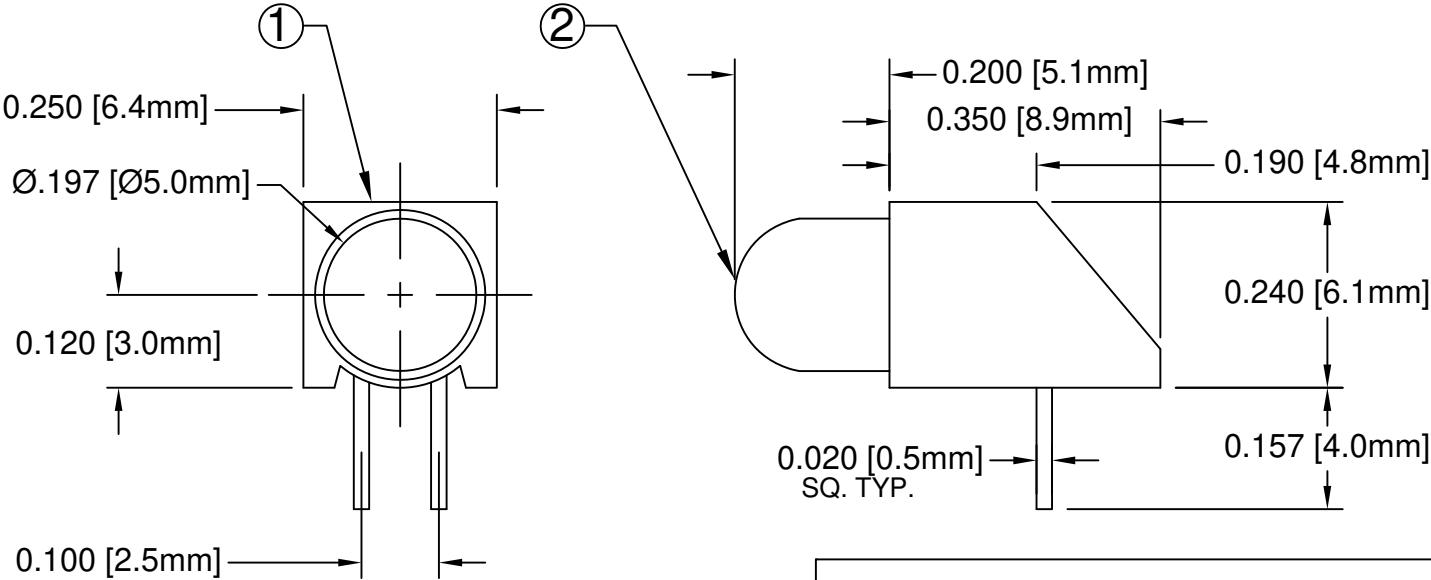
Email & Skype: [info@chipsmall.com](mailto:info@chipsmall.com) Web: [www.chipsmall.com](http://www.chipsmall.com)

Address: A1208, Overseas Decoration Building, #122 Zhenhua RD., Futian, Shenzhen, China



ITEM	Q'TY	PART NUMBER	PART DESCRIPTION
1	1	H-178C-2	T-1¾ (5mm) LED Holder, 90° Mount
2	1	5BC-XX	T-1¾ (5mm) Non-Flange Bi-Color LED, See Page 2

REV.	DESCRIPTION	DATE	APPROVED
A	Engineering Update w/o Changes	03/05/04	M. C.
B	Updated LED Protrusion from .215 to .200	12/19/06	M. C.
C	Changed Holder from H-178C-1 to H-178C-2	02/14/07	M. C.
D	Engineering Update w/o Changes	06/20/16	J. C.



# ABSOLUTE MAXIMUM RATINGS (Ta=25° C)

REVERSE VOLTAGE	5V
REVERSE CURRENT	100uA
OPERATING TEMPERATURE RANGE	-40° C - 80° C
STORAGE TEMPERATURE	-40° C - 100° C
LEAD SOLDERING TEMPERATURE(1/16" FROM BODY)	260° C FOR 5 SECONDS

STANDARD TOLERANCE (UNLESS OTHERWISE SPECIFIED)		 4 THOMAS, IRVINE, CA. 92618 TEL: (949) 951-8808 FAX: (949) 951-3974	
DECIMALS	ANGULAR		
.X ± .1	X° ± 1°		
.XX ± .02			
.XXX ± .010			
DESIGNED: T. Yin	DATE: 03/05/04	<b>TITLE:</b> T-1¾ (5mm) BI-COLOR 90° SINGLE-LEVEL LED ASSY	
CHECKED: D. Green	DATE: 03/05/04	<b>PART NO:</b> H178CBCXX	<b>REVISION:</b> D
		<b>CAGE CODE :</b> 32559	<b>SHEET # 1 OF 2</b>
CAD GENERATED DOCUMENT. DO NOT MEASURE DRAWING.			

REV.	DESCRIPTION	DATE	APPROVED
	SEE SHEET #1		

LED Assy. No.	Peak Wave Length $\lambda_p$ (nm)	Emitted Color	Lens Appearance	Absolute Max. Ratings	Electro-Optical Data @ 20mA			Viewing Angle $2\theta_{1/2}$ (Deg)	LED P/N
					Vf (V)		Iv (mcd)		
				If (mA)	TYP	MAX	TYP		
H178CBC	635	HE RED	WHITE DIFFUSED	30	2.0	2.6	45	50	5BC
	568	GREEN		30	2.2	2.6	45		
H178CBC-Y/G	585	YELLOW	WHITE DIFFUSED	30	2.1	2.6	40	50	5BC-Y/G
	568	GREEN		30	2.2	2.6	40		

STANDARD TOLERANCE ( UNLESS OTHERWISE SPECIFIED ) <div><div>±10% ALL VALUES</div><div>ANGULAR</div></div>		<div><div><div>BIVAR<sup>®</sup></div><div>4 THOMAS, IRVINE, CA. 92618</div><div>TEL.: (949) 951-8808    FAX: (949) 951-3974</div></div></div>	
DESIGNED: <b>T. Yin</b>	DATE: <b>03/05/04</b>	<div><div><div><div><div></div><div></div></div></div><div>TITLE: T-1¾ (5mm) BI-COLOR 90° SINGLE-LEVEL LED ASSY</div></div></div>	
CHECKED: <b>D. Green</b>	DATE: <b>03/05/04</b>	PART NO: <b>H178CBCXX</b>	REVISION: <b>D</b>
		CAGE CODE : <b>32559</b>	SHEET # <b>2</b> OF <b>2</b>
CAD GENERATED DOCUMENT. DO NOT MEASURE DRAWING.			