



Chipsmall Limited consists of a professional team with an average of over 10 year of expertise in the distribution of electronic components. Based in Hongkong, we have already established firm and mutual-benefit business relationships with customers from,Europe,America and south Asia,supplying obsolete and hard-to-find components to meet their specific needs.

With the principle of “Quality Parts,Customers Priority,Honest Operation,and Considerate Service”,our business mainly focus on the distribution of electronic components. Line cards we deal with include Microchip,ALPS,ROHM,Xilinx,Pulse,ON,Everlight and Freescale. Main products comprise IC,Modules,Potentiometer,IC Socket,Relay,Connector.Our parts cover such applications as commercial,industrial, and automotives areas.

We are looking forward to setting up business relationship with you and hope to provide you with the best service and solution. Let us make a better world for our industry!



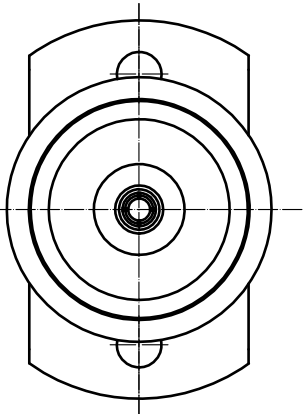
Contact us

Tel: +86-755-8981 8866 Fax: +86-755-8427 6832

Email & Skype: info@chipsmall.com Web: www.chipsmall.com

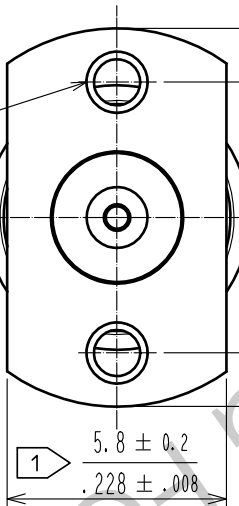
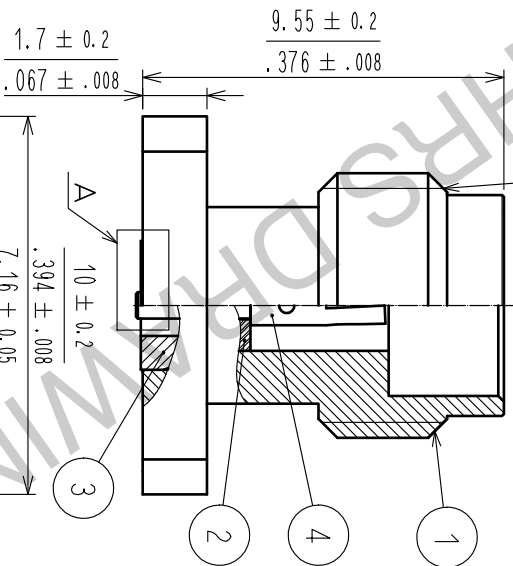
Address: A1208, Overseas Decoration Building, #122 Zhenhua RD., Futian, Shenzhen, China





M7×0.75-6g

- 1 WHEN MATING THE CONNECTOR, PLEASE HOLD MILLING AREA OF 5.8 ± 0.2 WITH A SPANNER NOT TO PLACE STRESS ON PCB BY THE TORQUE.
- 2 0-80UNF-28 SCREW TIGHTENING TORQUE IS $0.09 \text{ N} \cdot \text{m}$.
- 3 PLEASE USE ATTACHED SCREW AND WASHER FOR PCB MOUNTING. ATTACHED SCREW AND WASHER APPLY PCB THICKNESS $T=2.4$ TO 4.25 mm .
- 4 RESIST OF INSIDE OF $\phi 4.35 \pm 0.02$ (GROUND PAD) IS PROHIBITED.
- 5 RECOMMENDED PCB THICKNESS $t1$ IS GREATER THAN 1.6 mm .
- 6 THIS CONNECTOR SHOULD BE USE FOR TEST PORT ONLY.

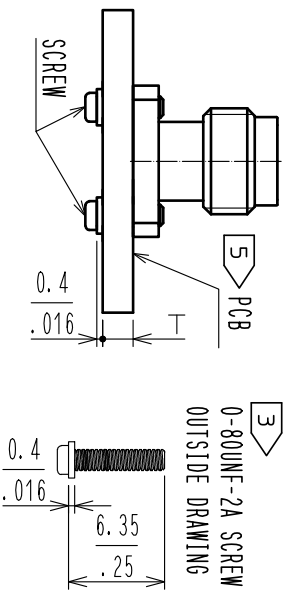


2 2×0-80UNF-28

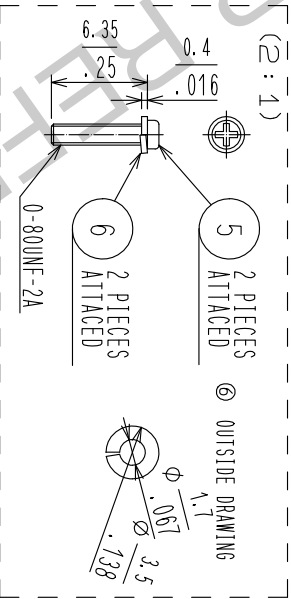
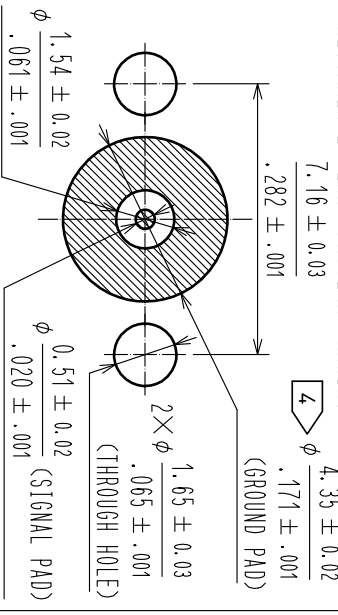
A (10:1)

0.05
0.0020.13
0.005

MOUNTING DRAWING(2:1)



RECOMMENDED LAND PATTERN DRAWING



RoHS COMPLIANT

3	STAINLESS STEEL	GOLD PLATING	6	STAINLESS STEEL	SPRING WASHER		
2	PTFE		5	STEEL	0-80UNF-2A SCREW		
1	STAINLESS STEEL	PASSIVATE	4	BERYLLIUM COPPER	GOLD PLATING		
NO.	MATERIAL	FINISH	REMARKS	NO.	MATERIAL	FINISH	REMARKS
UNITS	[mm/in]	SCALE	COUNT	DESCRIPTION OF REVISIONS	DESIGNED	CHECKED	DATE
		5 : 1	2	DIS-D-00001840	TP. MATSUMOTO	TS. NOBE	17.01.30
		APPROVED	KY. SHIMIZU	16.08.30	DRAWING NO.	EDC-356161-11-01	
		CHECKED	TO. KATAYAMA	16.08.30	PART NO.	H2.4-R-SR2(11)	
		DESIGNED	TP. MATSUMOTO	16.08.29	CODE NO.	CL338-0601-8-11	
		DRAWN	TP. MATSUMOTO	16.08.29			

HRS

HIROSE
ELECTRIC
CO., LTD.