



Chipsmall Limited consists of a professional team with an average of over 10 year of expertise in the distribution of electronic components. Based in Hongkong, we have already established firm and mutual-benefit business relationships with customers from,Europe,America and south Asia,supplying obsolete and hard-to-find components to meet their specific needs.

With the principle of "Quality Parts,Customers Priority,Honest Operation,and Considerate Service",our business mainly focus on the distribution of electronic components. Line cards we deal with include Microchip,ALPS,ROHM,Xilinx,Pulse,ON,Everlight and Freescale. Main products comprise IC,Modules,Potentiometer,IC Socket,Relay,Connector.Our parts cover such applications as commercial,industrial, and automotives areas.

We are looking forward to setting up business relationship with you and hope to provide you with the best service and solution. Let us make a better world for our industry!



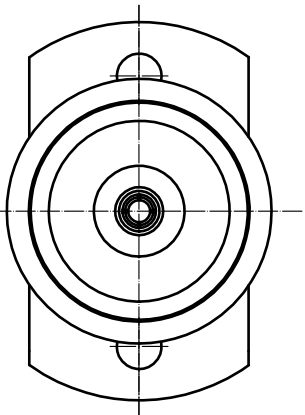
## Contact us

Tel: +86-755-8981 8866 Fax: +86-755-8427 6832

Email & Skype: [info@chipsmall.com](mailto:info@chipsmall.com) Web: [www.chipsmall.com](http://www.chipsmall.com)

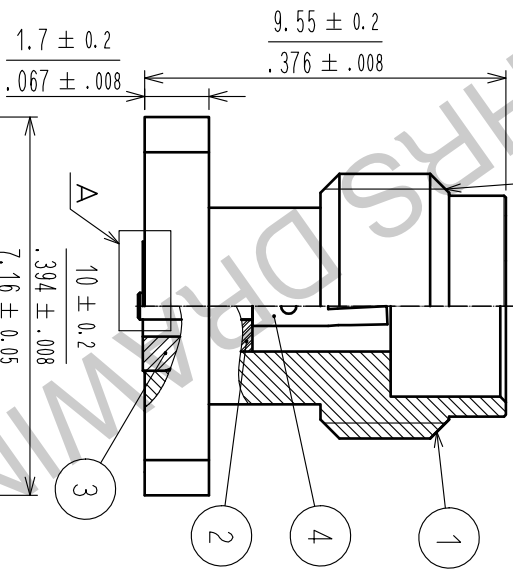
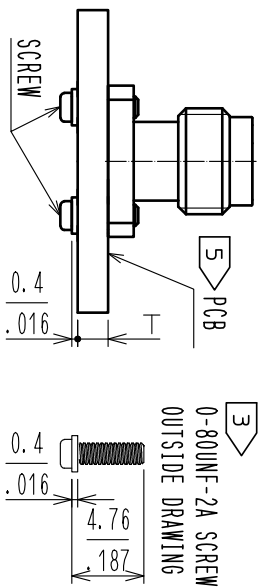
Address: A1208, Overseas Decoration Building, #122 Zhenhua RD., Futian, Shenzhen, China



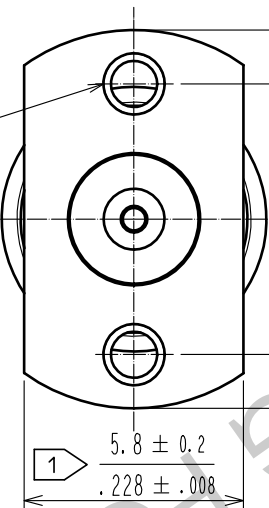
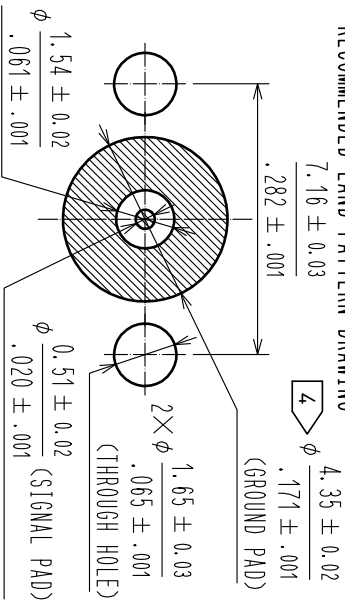


- 1 WHEN MATING THE CONNECTOR, PLEASE HOLD MILLING AREA OF  $5.8 \pm 0.2$  WITH A SPANNER NOT TO PLACE STRESS ON PCB BY THE TORQUE.
- 2 0-80UNF-2B SCREW TIGHTENING TORQUE IS  $0.09\text{N} \cdot \text{m}$ .
- 3 PLEASE USE ATTACHED SCREW AND WASHER FOR PCB MOUNTING. ATTACHED SCREW AND WASHER APPLY PCB THICKNESS  $T=0.8$  TO  $2.65\text{mm}$ .
- 4 RESIST OF INSIDE OF  $\phi 4.35 \pm 0.02$  (GROUND PAD) IS PROHIBITED.
- 5 RECOMMENDED PCB THICKNESS  $t_1$  IS GREATER THAN  $1.6\text{mm}$ .
- 6 THIS CONNECTOR SHOULD BE USE FOR TEST PORT ONLY.

MOUNTING DRAWING(2:1)

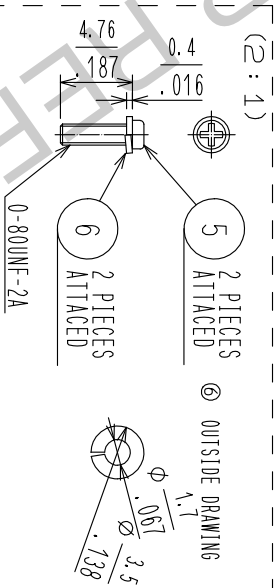
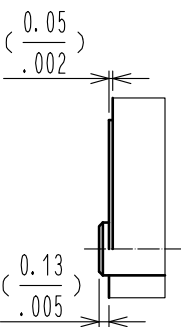


RECOMMENDED LAND PATTERN DRAWING



2 2X0-80UNF-2B

A (10:1)



RoHS COMPLIANT

3	STAINLESS STEEL	GOLD PLATING	6	STAINLESS STEEL	SPRING WASHER
2	PTFE		5	STEEL	0-80UNF-2A SCREW
1	STAINLESS STEEL	PASSIVATE	4	BERYLLIUM COPPER	GOLD PLATING
NO.	MATERIAL	FINISH , REMARKS	NO.	MATERIAL	FINISH , REMARKS

UNITS [mm/in]	SCALE	COUNT	DESCRIPTION OF REVISIONS	DESIGNED	CHECKED	DATE
5:1	2	DIS-D-00001840		TP.MATSUMOTO	TS.NOBE	17.01.30

APPROVED : KY. SHIMIZU 16.08.30 DRAWING NO. EDC-356161-12-01

**HRS** HIROSE  
ELECTRIC  
CO., LTD.

CHECKED : TO. KATAYAMA 16.08.30 PART NO. H2.4-R-SR2(12)  
DESIGNED : TP. MATSUMOTO 16.08.29 CODE NO. CL338-0601-8-12