



Chipsmall Limited consists of a professional team with an average of over 10 year of expertise in the distribution of electronic components. Based in Hongkong, we have already established firm and mutual-benefit business relationships with customers from,Europe,America and south Asia,supplying obsolete and hard-to-find components to meet their specific needs.

With the principle of “Quality Parts,Customers Priority,Honest Operation,and Considerate Service”,our business mainly focus on the distribution of electronic components. Line cards we deal with include Microchip,ALPS,ROHM,Xilinx,Pulse,ON,Everlight and Freescale. Main products comprise IC,Modules,Potentiometer,IC Socket,Relay,Connector.Our parts cover such applications as commercial,industrial, and automotives areas.

We are looking forward to setting up business relationship with you and hope to provide you with the best service and solution. Let us make a better world for our industry!



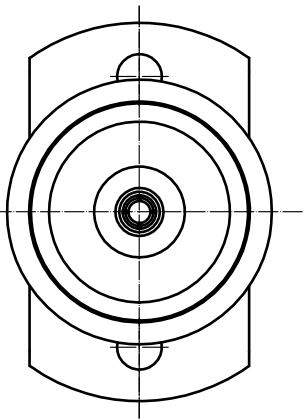
Contact us

Tel: +86-755-8981 8866 Fax: +86-755-8427 6832

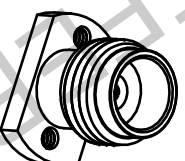
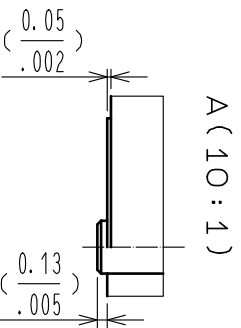
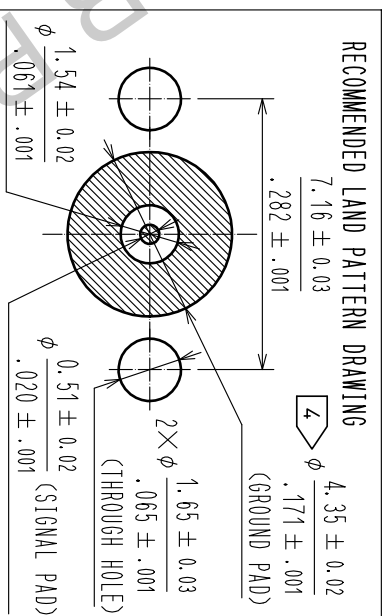
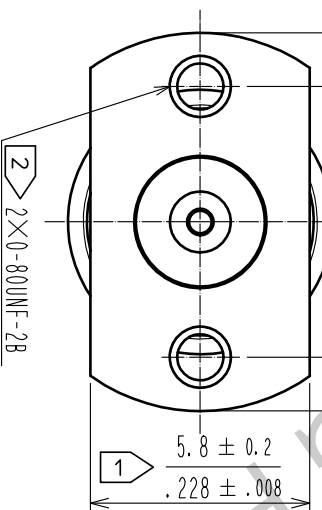
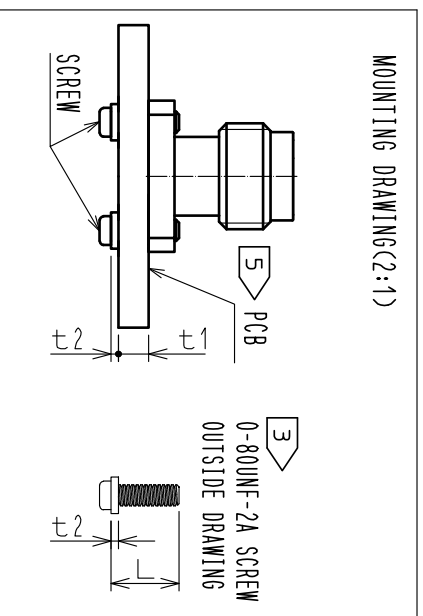
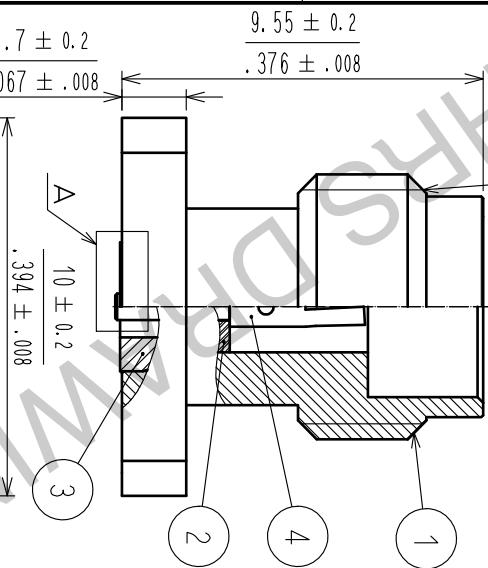
Email & Skype: info@chipsmall.com Web: www.chipsmall.com

Address: A1208, Overseas Decoration Building, #122 Zhenhua RD., Futian, Shenzhen, China









- 1 WHEN MATING THE CONNECTOR, PLEASE HOLD MILLING AREA OF 5.8 ± 0.2 WITH A SPANNER NOT TO PLACE STRESS ON PCB BY THE TORQUE.
- 2 0-80UNF-2B SCREW TIGHTENING TORQUE IS $0.09 \text{ N} \cdot \text{m}$.
- 3 PLEASE USE A PCB MOUNTING SCREW OF THE LENGTH OF $L(\text{mm})$ THE LENGTH OF $L(\text{mm})$ IS PCB THICKNESS $t1(\text{mm}) + \text{SPRING WASHER THICKNESS } t2(\text{mm}) + 2(\text{mm})$. PLEASE USE A SCREW WITH A SPRING WASHER. RESIST OF INSIDE OF $\phi 4.35 \pm 0.02$ (GROUND PAD) IS PROHIBITED.
- 4
- 5 RECOMMENDED PCB THICKNESS $t1$ IS GREATER THAN 1.6mm .
- 6 THIS CONNECTOR SHOULD BE USE FOR TEST PORT ONLY.



ROHS COMPLIANT

| | | | | | | | | |
|-----------------------------------------------------------------------------------|-----------------------------------------------------------------------------------|--------------------------|-------------|--------------------------|------------------|------------------|-------------------------------------------------------------------------------------|-------------------------------------------------------------------------------------|
| 2 | PTFE | | 4 | BERYLLIUM COPPER | GOLD PLATING | | | |
| 1 | STAINLESS STEEL | PASSIVATE | 3 | STAINLESS STEEL | GOLD PLATING | | | |
| NO. | MATERIAL | FINISH . REMARKS | | NO. | MATERIAL | FINISH . REMARKS | | |
| UNITS |  | SCALE | COUNT | DESCRIPTION OF REVISIONS | DESIGNED | CHECKED | DATE | |
| [mm/in] | | 5 : 1 | 2 | DIS-D-00001840 | TP.MATSUMOTO | TS.NOBE | 17.01.30 | |
| | | APPROVED : KY. SHIMIZU | DRAWING NO. | | EDC-356161-00-01 | | | |
| | | CHECKED : TO. KATAYAMA | PART NO. | | H2. 4-R-SR2 | | | |
| | | DESIGNED : TP. MATSUMOTO | NO. | | | | | |
| | | DRAWN : TP. MATSUMOTO | CODE | | CL338-0601-8-00 | | | |
|  | | | | | | |  |  |
| HI ROSE ELECTRIC CO., LTD. | | | | | | | 1 | 1 |

HRS

HIROSE
ELECTRIC
CO., LTD.