



Chipsmall Limited consists of a professional team with an average of over 10 year of expertise in the distribution of electronic components. Based in Hongkong, we have already established firm and mutual-benefit business relationships with customers from,Europe,America and south Asia,supplying obsolete and hard-to-find components to meet their specific needs.

With the principle of “Quality Parts,Customers Priority,Honest Operation,and Considerate Service”,our business mainly focus on the distribution of electronic components. Line cards we deal with include Microchip,ALPS,ROHM,Xilinx,Pulse,ON,Everlight and Freescale. Main products comprise IC,Modules,Potentiometer,IC Socket,Relay,Connector.Our parts cover such applications as commercial,industrial, and automotives areas.

We are looking forward to setting up business relationship with you and hope to provide you with the best service and solution. Let us make a better world for our industry!



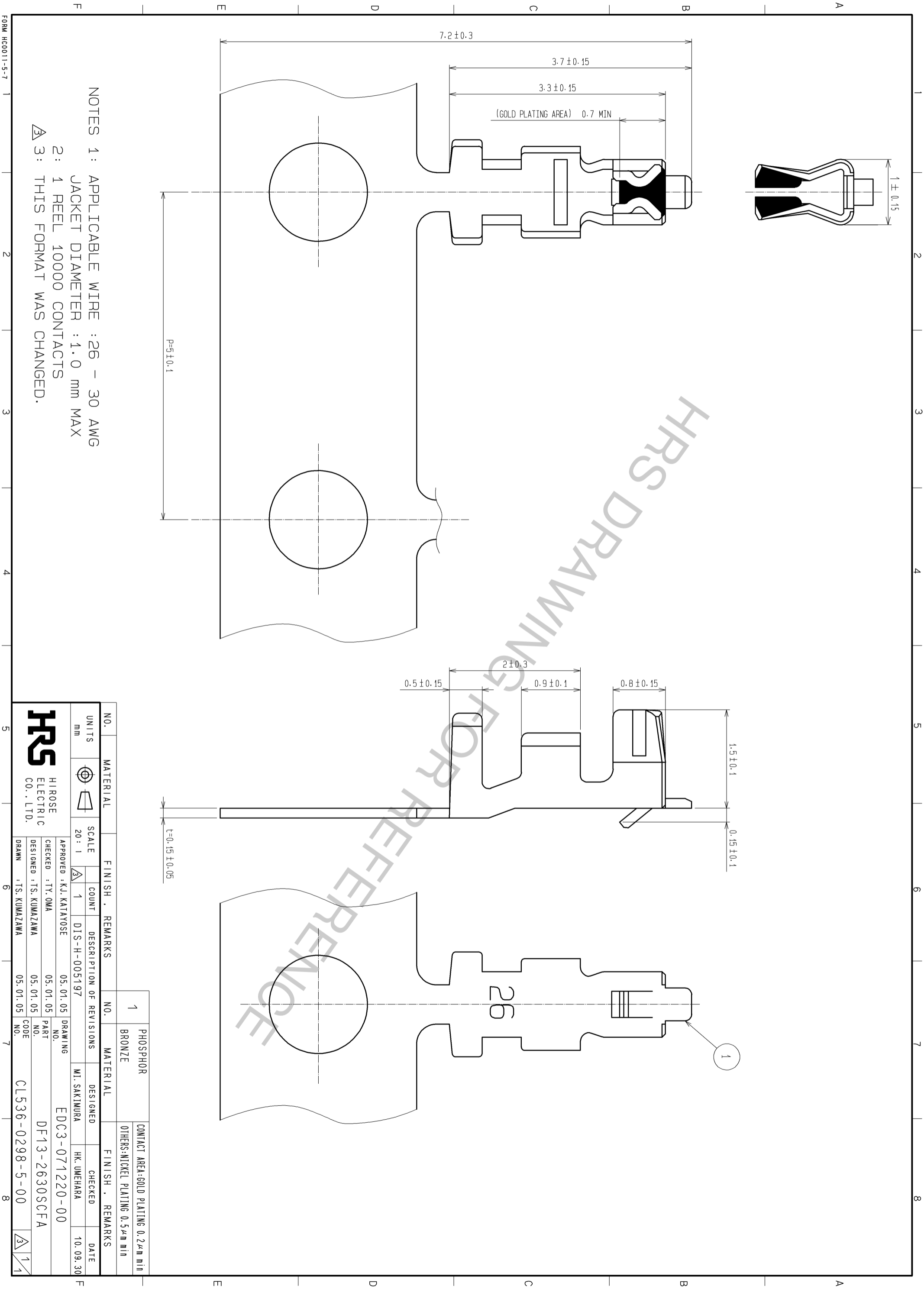
Contact us

Tel: +86-755-8981 8866 Fax: +86-755-8427 6832

Email & Skype: info@chipsmall.com Web: www.chipsmall.com

Address: A1208, Overseas Decoration Building, #122 Zhenhua RD., Futian, Shenzhen, China





NOTES 1: APPLICABLE WIRE : 26 - 30 AWG
 JACKET DIAMETER : 1.0 mm MAX
 2: 1 REEL 10000 CONTACTS
 3: THIS FORMAT WAS CHANGED.

NO.	UNITS	MATERIAL	FINISH	REMARKS	NO.	MATERIAL	FINISH	REMARKS
1	mm	PHOSPHOR BRONZE	GOLD PLATING	0.2 μ m min	1	PHOSPHOR BRONZE	GOLD PLATING	0.2 μ m min
			NICKEL PLATING	0.5 μ m min			NICKEL PLATING	0.5 μ m min

NO.	SCALE	COUNT	DESCRIPTION OF REVISIONS	DESIGNED	CHECKED	DATE
20: 1	20: 1	1	DIS-H-005197	MI. SAKIMURA	HK. UMEHARA	10.09.30

APPROVED	CHECKED	DESIGNED	DRAWING	PART NO.	CODE
K.J. KATAYOSE	TY. OMA	TS. KUMAZAWA	EDC3-071220-00	DF13-2630SCFA	CL536-0298-5-00

<p>HIROSE ELECTRIC CO., LTD.</p>	<p>SCALE 20: 1</p>	<p>COUNT 1</p>	<p>REVISIONS 1</p>	<p>DATE 10.09.30</p>
----------------------------------	--------------------	----------------	--------------------	----------------------