



Chipsmall Limited consists of a professional team with an average of over 10 year of expertise in the distribution of electronic components. Based in Hongkong, we have already established firm and mutual-benefit business relationships with customers from,Europe,America and south Asia,supplying obsolete and hard-to-find components to meet their specific needs.

With the principle of "Quality Parts,Customers Priority,Honest Operation,and Considerate Service",our business mainly focus on the distribution of electronic components. Line cards we deal with include Microchip,ALPS,ROHM,Xilinx,Pulse,ON,Everlight and Freescale. Main products comprise IC,Modules,Potentiometer,IC Socket,Relay,Connector.Our parts cover such applications as commercial,industrial, and automotives areas.

We are looking forward to setting up business relationship with you and hope to provide you with the best service and solution. Let us make a better world for our industry!



## Contact us

Tel: +86-755-8981 8866 Fax: +86-755-8427 6832

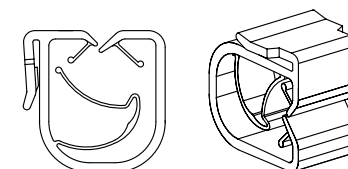
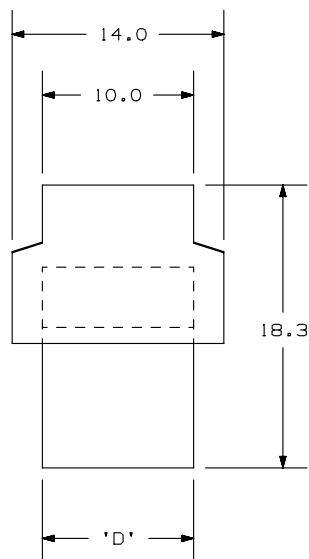
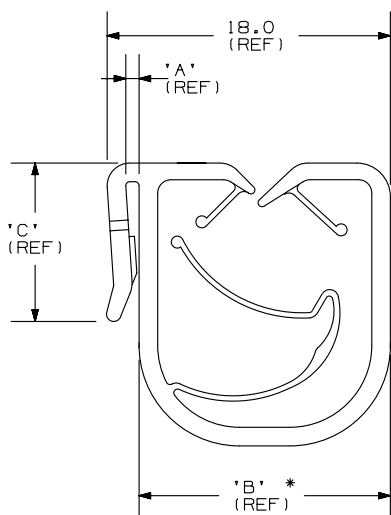
Email & Skype: info@chipsmall.com Web: www.chipsmall.com

Address: A1208, Overseas Decoration Building, #122 Zhenhua RD., Futian, Shenzhen, China



THIS COPY IS PROVIDED ON A RESTRICTED BASIS AND IS NOT TO BE USED IN ANY WAY DETRIMENTAL TO THE INTERESTS OF PANDUIT CORPORATION.

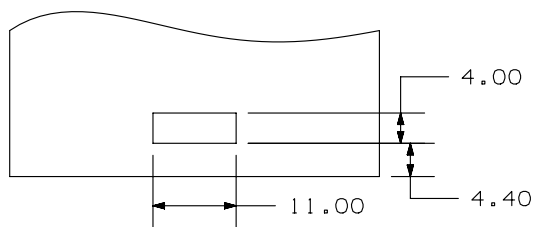
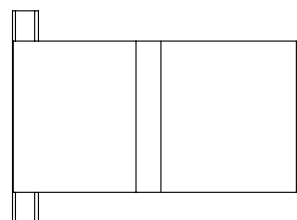
PANDUIT PART NO.	BUNDLE DIA MIN - MAX.	DIMENSIONS				MATERIAL	COLOR	WEIGHT grams 100 pcs
		'A'	'B'	'C'	'D'			
HCME06A12-...20	6 - 12	1.2	15	12.0	10.0	NYLON 6/6	BLACK	150
HCME06A12-...130	6 - 12	1.2	15	12.0	10.0	ACETAL		



SCALE: FULL

NOTES:

- SEE [www.panduit.com](http://www.panduit.com) FOR CURRENT PART NUMBER SUFFIX DESIGNATION FOR PACKAGE SIZE AND PART COLOR.
- (\* ) DIMENSIONAL VARIANCE IS POSSIBLE DUE TO MOLDING PROCESS RELATED SINK MARKS.
- APPLICATION SPECIFICATION:  
 PUNCHED RECTANGULAR HOLE: 4.0 x 11.0 mm  
 PANEL THICKNESS: 0.6 - 1.2 mm



Application Specification Detail View (See note 3)

CAD FILENAME/LAYERS		10B0151X_DC/00 - GB1932BF_REV08	
<b>PANDUIT</b> CORP.		TINLEY PARK, ILLINOIS	
HARNESS CLIP FOR EDGE MOUNT			
Unless otherwise specified, all dimensions are metric tolerance: ±0.5mm			
DRAWN BY	JAD	MAT'L:	SCALE 2X
DATE	5-7-98	SEE TABLE	DRAWING NO.
CHK'D			GB1932BF
			DWG SIZE A

REV	DATE	BY	CHK	DESCRIPTION	ECN	R	CUST	SUP
08	3/20/13	BWG	JADE	REVISED DIMENSION "D" WAS 9.7 - 9.7. CADFILE WAS G01932BF_PB_HCME06A12_07. REVISED NOTE 1.	GB1932BF	08		PBC