



Chipsmall Limited consists of a professional team with an average of over 10 year of expertise in the distribution of electronic components. Based in Hongkong, we have already established firm and mutual-benefit business relationships with customers from,Europe,America and south Asia,supplying obsolete and hard-to-find components to meet their specific needs.

With the principle of “Quality Parts,Customers Priority,Honest Operation,and Considerate Service”,our business mainly focus on the distribution of electronic components. Line cards we deal with include Microchip,ALPS,ROHM,Xilinx,Pulse,ON,Everlight and Freescale. Main products comprise IC,Modules,Potentiometer,IC Socket,Relay,Connector.Our parts cover such applications as commercial,industrial, and automotives areas.

We are looking forward to setting up business relationship with you and hope to provide you with the best service and solution. Let us make a better world for our industry!



Contact us

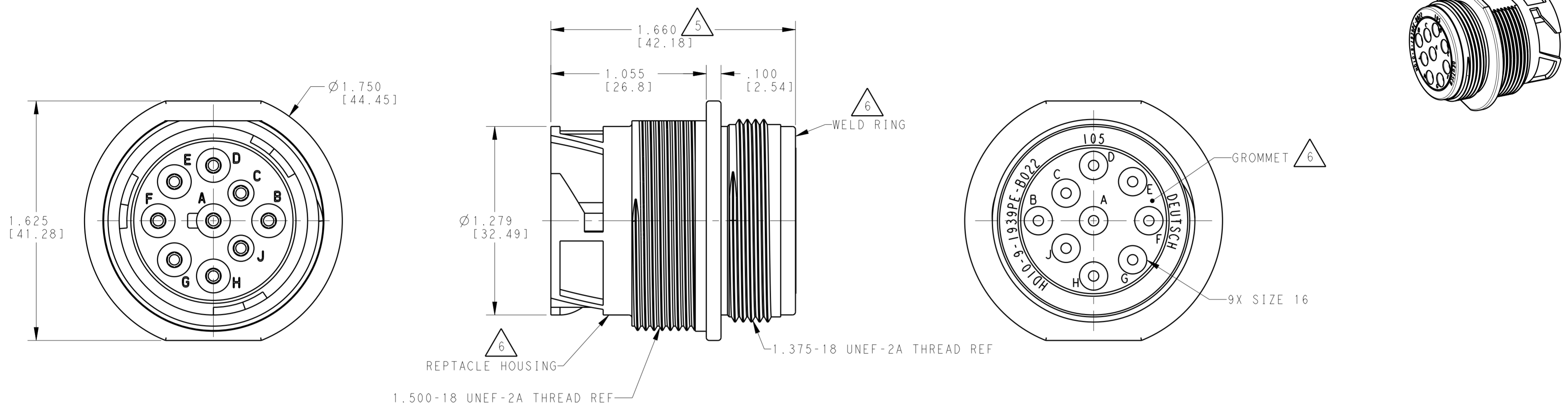
Tel: +86-755-8981 8866 Fax: +86-755-8427 6832

Email & Skype: info@chipsmall.com Web: www.chipsmall.com

Address: A1208, Overseas Decoration Building, #122 Zhenhua RD., Futian, Shenzhen, China



LOC		DIST		REVISIONS			
P	LTR	DESCRIPTION	DATE	DWN	APVD		
	A	REVISED PER E.O. P20077	08DEC2008	-	RDR		
	B	REVISED PER E.O. P21366	04JUN2012	-	RDR		
	B1	REVISED PER ECO-14-002953	29JAN2014	PV	DM		
	B2	REVISED PER ECO-14-010089	02JUL2014	JA	DM		

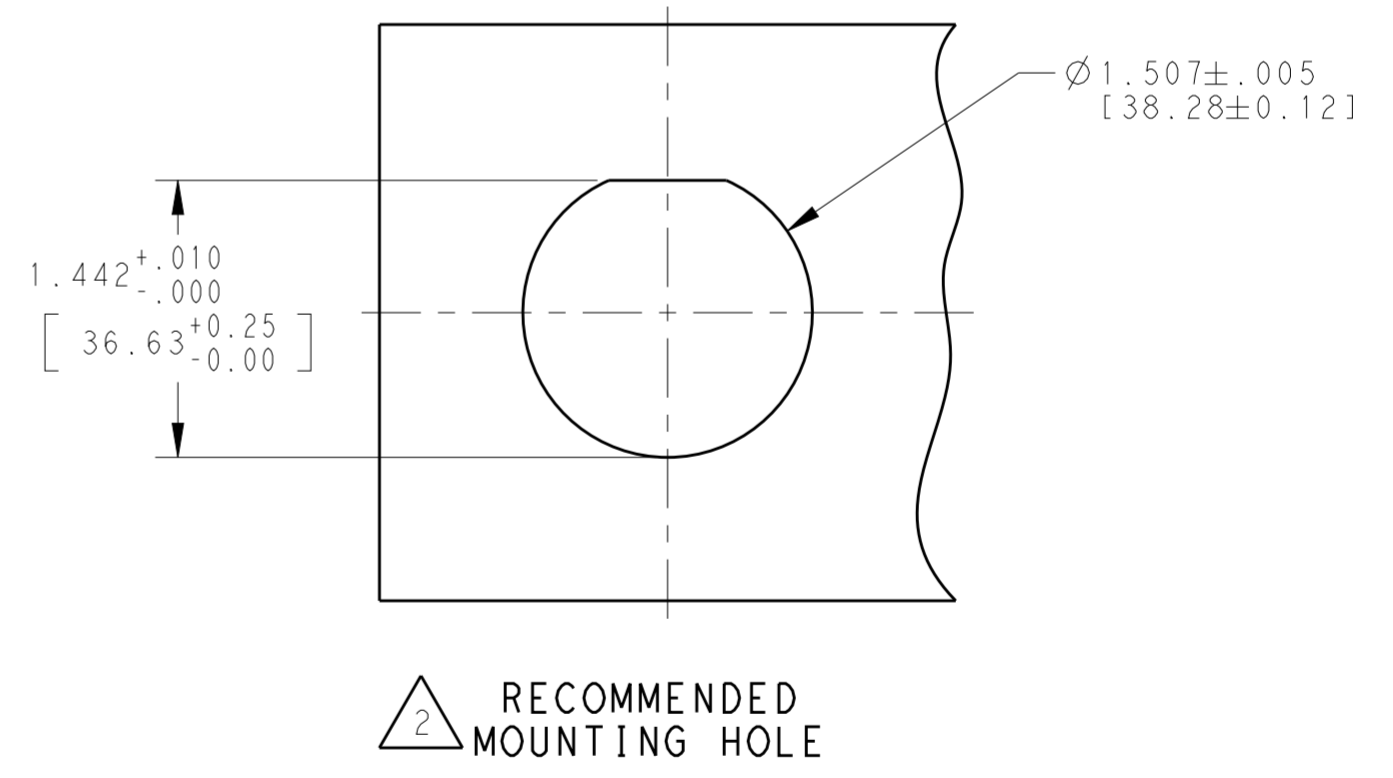


- 8. THIS RECEPTACLE TO BE USED WITH 2411-002-1805 PANEL NUT AND 2414-002-1886 LOCK WASHER. PANEL NUT MOUNTING TORQUE: 45-55 IN. LB. [5.1 - 6.1 N.M.]
- 7. B022 MODIFICATION: SAE J1939-13, TYPE 1.
- 6 MATERIAL: RECEPTACLE HOUSING AND WELD RING: PA 15%GF (BLACK)
GROMMET: SILICONE (RED)
- 5 OVERALL DIMENSION DOES NOT INCLUDE RUBBER GROMMET.
- 4. THIS RECEPTACLE MATES WITH FOLLOWING PLUGS(X=SEAL TYPE, XXXX = ALL MODIFICATIONS)
HD16-9-1939SX-XXXX
HD17-9-1939SX-XXXX
- 3 SEE DRAWING 0425-015-0000 FOR CONTACT AND WIRE PERFORMANCE AND APPLICATION CHARACTERISTICS.
- 2 RECOMMENDED PANEL THICKNESS: .062 [1.57] TO .188 [4.77].

1. SEE TABLE FOR USABLE WIRE RANGE AND INSULATION RANGES.

PART NUMBER	SEAL TYPE	CONTACT SIZE	MIN. INSUL. O.D.	MAX. INSUL. O.D.	WIRE RANGE [mm ²]
HD10-9-1939P-B022	NORMAL	16	.100 [2.54]	.150 [3.81]	14-18 AWG [2.0-.75]
HD10-9-1939PE-B022	E	16	.053 [1.35]	.120 [3.05]	14-20 AWG [2.0-.50]

NOTES:



THIS DRAWING IS A CONTROLLED DOCUMENT.

DIMENSIONS: [INCHES][mm]	TOLERANCES UNLESS OTHERWISE SPECIFIED: 0 PLC ± 1 PLC ± 2 PLC ± 3 PLC ±.025 4 PLC ± ANGLES ±0°30'0" FINISH	DWN I. GRANICHAROVA 12FEB2008 CHK ILINA GRANICHAROVA 02JUL2014 APVD DAVID MEYER 02JUL2014	NAME RECEPTACLE CONNECTOR ARR. 9-1939 -B022 MOD HD10 SERIES PANEL MOUNT, D-HOLE
MATERIAL	Customer Drawing	WEIGHT 42.38g	SIZE A2 CAGE CODE 4AFU8 DRAWING NO. HD10-9-1939PX-B022 RESTRICTED TO
SCALE 2:1		SHEET 1 OF 1 REV B2	