



Chipsmall Limited consists of a professional team with an average of over 10 year of expertise in the distribution of electronic components. Based in Hongkong, we have already established firm and mutual-benefit business relationships with customers from,Europe,America and south Asia,supplying obsolete and hard-to-find components to meet their specific needs.

With the principle of “Quality Parts,Customers Priority,Honest Operation,and Considerate Service”,our business mainly focus on the distribution of electronic components. Line cards we deal with include Microchip,ALPS,ROHM,Xilinx,Pulse,ON,Everlight and Freescale. Main products comprise IC,Modules,Potentiometer,IC Socket,Relay,Connector.Our parts cover such applications as commercial,industrial, and automotives areas.

We are looking forward to setting up business relationship with you and hope to provide you with the best service and solution. Let us make a better world for our industry!



## Contact us

Tel: +86-755-8981 8866 Fax: +86-755-8427 6832

Email & Skype: info@chipsmall.com Web: www.chipsmall.com

Address: A1208, Overseas Decoration Building, #122 Zhenhua RD., Futian, Shenzhen, China



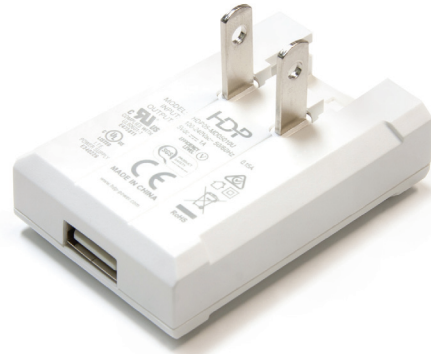
MEDITE

# Global 12W Switch Mode Power Adapter for Medical & ITE Applications



## Features

- Certified to IEC 60950 and IEC 60601 standards
- Interchangeable inputs for global markets
- Slim profile design with foldable US blades
- USB or fixed cord output
- Available in custom colors
- One year warranty



## Electrical Specifications

INPUT VOLTAGE	90 ~ 264 VAC
FREQUENCY	47 ~ 63Hz
MAXIMUM OUTPUT POWER	12W
INRUSH CURRENT	Max 50A @ 230V Cold Start
EFFICIENCY	Meets CEC VI
LOW STANDBY POWER	Under 100mW

### OVER VOLTAGE / SHORT CIRCUIT PROTECTION

Model	Output (V)	Output (A)	Ripple
HDP12-MD05024U	5.0V	2400mA	100mV
HDP12-MDXXXYYC	5.0V ~ 9.0V	1330mA Max	100mV
HDP12-MDXXXYYC	9.1V ~ 12.0V	1000mA Max	120mV
HDP12-MDXXXYYC	12.1V ~ 15.0V	800mA Max	150mV
HDP12-MDXXXYYC	15.1V ~ 18.0V	660mA Max	180mV
HDP12-MDXXXYYC	18.1V ~ 24.0V	500mA Max	240mV
HDP12-MDXXXYYC	24.1V ~ 28.0V	420mA Max	280mV

Model: XXX = Voltage, YY = Current, C = Fixed Cord, U = USB  
 Optional global input adapters for UK, AU, EU, KC



## Environmental & Reliability

OPERATING TEMPERATURE	0°C ~ 50°C
STORAGE TEMPERATURE	-20°C ~ 85°C
HUMIDITY	5% ~ 95% Non-Condensing
LEAKAGE CURRENT	0.15mA @ 264V & 63Hz
HI-POT	3000VAC 60 Sec
MTBF	50k Minimum Hours at 25°C

## Safety, Efficiency, & EMC Standards

UL/cUL  
 CE  
 CB  
 SAA  
 C-Tick

FCC  
 RoHS  
 REACH  
 CEC VI

