



Chipsmall Limited consists of a professional team with an average of over 10 year of expertise in the distribution of electronic components. Based in Hongkong, we have already established firm and mutual-benefit business relationships with customers from,Europe,America and south Asia,supplying obsolete and hard-to-find components to meet their specific needs.

With the principle of “Quality Parts,Customers Priority,Honest Operation,and Considerate Service”,our business mainly focus on the distribution of electronic components. Line cards we deal with include Microchip,ALPS,ROHM,Xilinx,Pulse,ON,Everlight and Freescale. Main products comprise IC,Modules,Potentiometer,IC Socket,Relay,Connector.Our parts cover such applications as commercial,industrial, and automotives areas.

We are looking forward to setting up business relationship with you and hope to provide you with the best service and solution. Let us make a better world for our industry!



Contact us

Tel: +86-755-8981 8866 Fax: +86-755-8427 6832

Email & Skype: info@chipsmall.com Web: www.chipsmall.com

Address: A1208, Overseas Decoration Building, #122 Zhenhua RD., Futian, Shenzhen, China



High Voltage Feed Through Ceramic Capacitors

For magnetron

HFC(Edc: 10kV) series

Issue date: June 2006

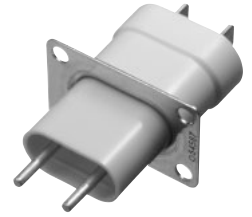
- All specifications are subject to change without notice.
 - Conformity to RoHS Directive: This means that, in conformity with EU Directive 2002/95/EC, lead, cadmium, mercury, hexavalent chromium, and specific bromine-based flame retardants, PBB and PBDE, have not been used, except for exempted applications.
-

High Voltage Feed Through Ceramic Capacitors For Magnetron HFC Series

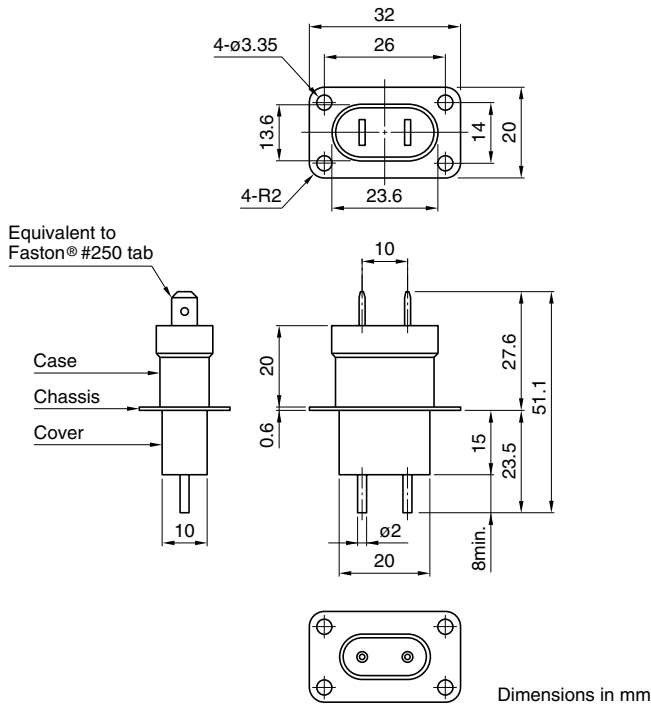
Conformity to RoHS Directive

FEATURES

- Effectively suppresses noise radiation over a wide frequency range.
- Excellent high-frequency characteristics.
- Compact and lightweight.
- Flame retardant (equivalent to UL94V-1).



SHAPES AND DIMENSIONS

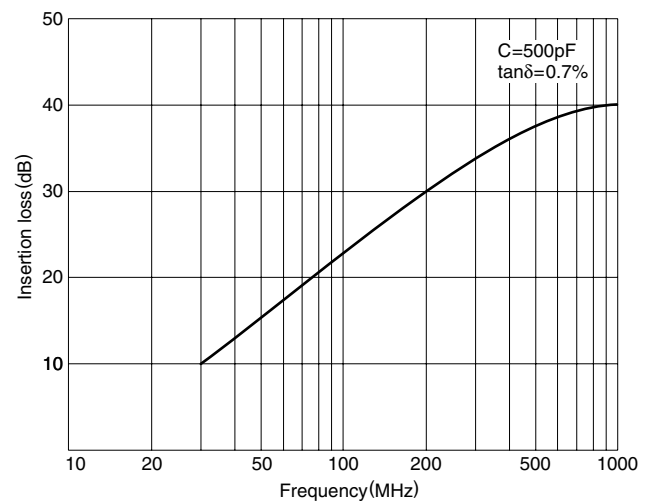


• Faston® is a registered trademark of Tyco Electronics AMP Corp. Incorporated.

CHARACTERISTICS

Rated voltage Edc	10kV
Withstand voltage Erms	10kV[50Hz, 1min]
Initial insulation resistance	10000M Ω min.
Rated capacitance and tolerance	500pF \pm 35%[1V, 1kHz]
tan δ	1% max.
Capacitance temperature characteristics	E(+20, -55%)
Operating temperature range	-30 to +120°C

FREQUENCY CHARACTERISTICS



- For more information about the products of other capacitance or data, please contact us.
- Conformity to RoHS Directive: This means that, in conformity with EU Directive 2002/95/EC, lead, cadmium, mercury, hexavalent chromium, and specific bromine-based flame retardants, PBB and PBDE, have not been used, except for exempted applications.

• All specifications are subject to change without notice.