



Chipsmall Limited consists of a professional team with an average of over 10 year of expertise in the distribution of electronic components. Based in Hongkong, we have already established firm and mutual-benefit business relationships with customers from,Europe,America and south Asia,supplying obsolete and hard-to-find components to meet their specific needs.

With the principle of “Quality Parts,Customers Priority,Honest Operation,and Considerate Service”,our business mainly focus on the distribution of electronic components. Line cards we deal with include Microchip,ALPS,ROHM,Xilinx,Pulse,ON,Everlight and Freescale. Main products comprise IC,Modules,Potentiometer,IC Socket,Relay,Connector.Our parts cover such applications as commercial,industrial, and automotives areas.

We are looking forward to setting up business relationship with you and hope to provide you with the best service and solution. Let us make a better world for our industry!



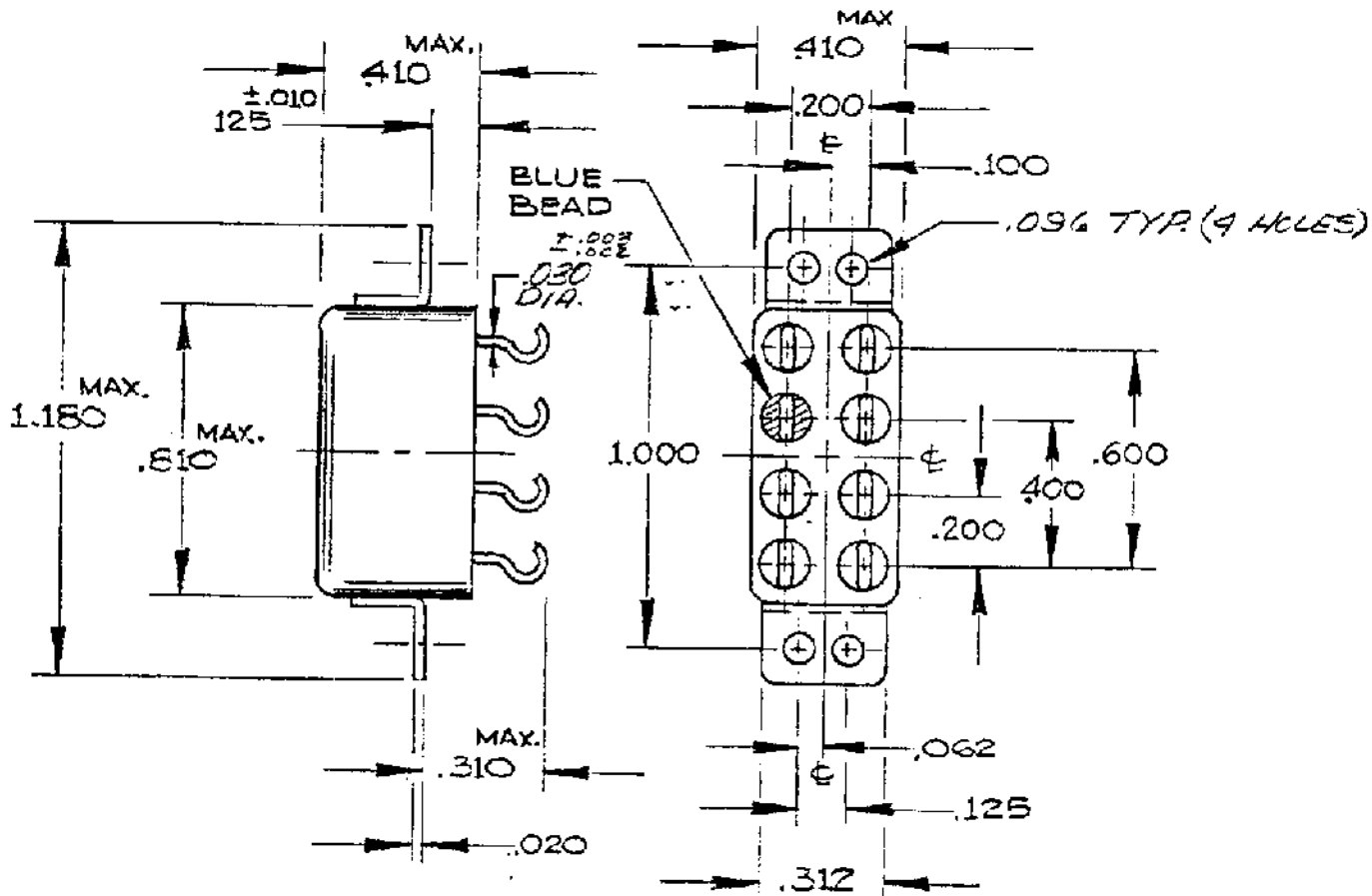
Contact us

Tel: +86-755-8981 8866 Fax: +86-755-8427 6832

Email & Skype: info@chipsmall.com Web: www.chipsmall.com

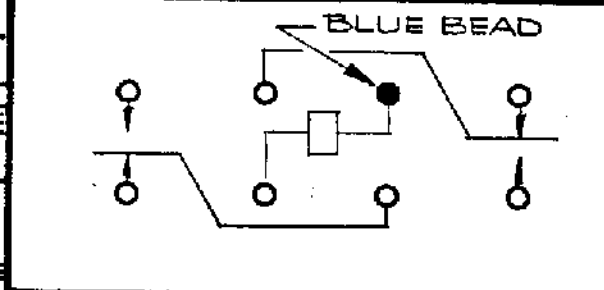
Address: A1208, Overseas Decoration Building, #122 Zhenhua RD., Futian, Shenzhen, China





CUSTOMER DATA SHEET

TOLERANCE UNLESS OTHERWISE SPECIFIED
 DECIMALS $\pm .005$ FRACTIONAL $\pm 1/64$



CONTACT RATING:
 2A @ 28VDC RES. 100,000 OPERATIONS
 10mA @ 30mV RES. 100,000 OPERATIONS

DR. 3-22-79 CK. JAL



Communications
 Instruments, Inc.

COIL: @ 25°C

WINDING # 1	WINDING # 2
700 OHMS $\pm 10\%$	OHMS
13.5 VDC MUST OPERATE	MUST OPERATE
1.5 VDC MUST RELEASE	MUST RELEASE

ENVIRONMENT:

VIBRATION 10 CPS TO 3000 CPS @ 30 g's

SHOCK 100 g's 6 MS. DURATION

TEMPERATURE -65 °C TO +125 °C

NOTES: NOMINAL VOLTAGE 26.5VDC

CUST. QPL
 CUST. NO. M39016/6-128L

TYPE "HFW" RELAY

HFW 1106 K12