



Chipsmall Limited consists of a professional team with an average of over 10 year of expertise in the distribution of electronic components. Based in Hongkong, we have already established firm and mutual-benefit business relationships with customers from,Europe,America and south Asia,supplying obsolete and hard-to-find components to meet their specific needs.

With the principle of “Quality Parts,Customers Priority,Honest Operation,and Considerate Service”,our business mainly focus on the distribution of electronic components. Line cards we deal with include Microchip,ALPS,ROHM,Xilinx,Pulse,ON,Everlight and Freescale. Main products comprise IC,Modules,Potentiometer,IC Socket,Relay,Connector.Our parts cover such applications as commercial,industrial, and automotives areas.

We are looking forward to setting up business relationship with you and hope to provide you with the best service and solution. Let us make a better world for our industry!



## Contact us

Tel: +86-755-8981 8866 Fax: +86-755-8427 6832

Email & Skype: info@chipsmall.com Web: www.chipsmall.com

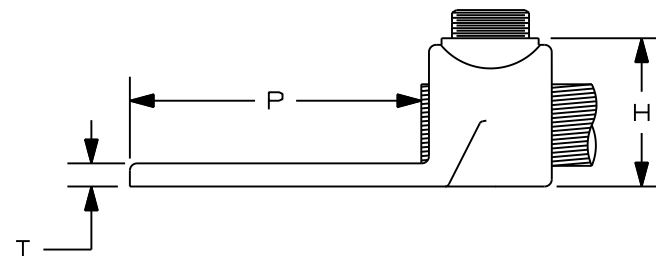
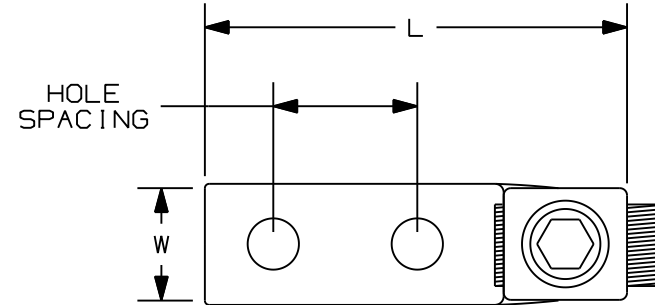
Address: A1208, Overseas Decoration Building, #122 Zhenhua RD., Futian, Shenzhen, China



PART NUMBER	COPPER CONDUCTOR SIZE RANGE	STUD HOLE SIZE (IN.)	STUD HOLE SPACING (IN.)	HEX KEY SIZE (IN.)	FIGURE DIMENSIONS (IN.)					TIGHTENING TORQUE (IN.-LBS.)	STD. PKG. QTY.
					L	W	H	T	P		
HL1-2-25-X	#14 SOL- #8 STR	1/4	.63	***	2.00	.56	.70	.19	1.25	20	10
HL4-2-X	#8 SOL- #4 STR	1/4	.63	***	2.00	.56	.69	.18	1.25	35	10
HL8-2-X	#4 SOL- #1 STR	1/4	.75	7/16	2.44	.75	.92	.22	1.50	100	10
HL13-2-5	#1 SOL- 2/0 STR	3/8 (A)	1.00	9/16	2.88	.81	1.07	.22	1.88	250	5
HL21-2-5	2/0 STR- 4/0 STR	3/8	1.00	9/16	3.00	1.00	1.33	.25	1.75	250	5
HL30-2-2	4/0 STR- 300 kcmil	3/8	1.00	5/8	3.13	1.06	1.45	.31	2.00	350	2
HL50-2-2	300 kcmil- 500 kcmil	3/8	1.00	3/4	3.44	1.38	1.66	.34	2.00	480	2

Ⓒ NOTES:

1. CAST FROM HIGH STRENGTH CORROSION RESISTANT COPPER ALLOY TO PROVIDE PREMIUM ELECTRICAL AND MECHANICAL PERFORMANCE.
2. WIRE RANGE TAKING CAPABILITY MINIMIZES INVENTORY REQUIREMENTS.
3. INTERNAL PRESSURE PLATE PROVIDES UNIFORM CLAMPING FORCE ON CONDUCTOR FOR PREMIUM ELECTRICAL PERFORMANCE.
4. PLATED STEEL SET SCREW PROVIDES HIGH STRENGTH, DURABLE ELECTRICAL CONTACT BETWEEN CONDUCTOR AND CONNECTOR.
5. INSPECTION WINDOW TO VISUALLY ASSURE FULL CONDUCTOR INSERTION.
6. FLAT BOTTOM ALLOWS FOR COMPLETE CONTACT WITH MOUNTING SURFACE.
7. UL LISTED FOR USE UP TO 600V AND TEMPERATURE RATED 90° C.



C41437\_03

03	03/08	JESH	JAC	ADDED NOTES	Ⓒ		JAC		<p>TWO-HOLE, STRAIGHT TONGUE LUG WITH INTERNAL PRESSURE PLATE CUSTOMER DRAWING</p>			
02	03/08	JESH	JAC	TC REVISION CHANGE	Ⓑ		JAC					
01	2/08	JESH	JAC	DIMENSION 3/8" WAS 5/16"	Ⓐ		JAC					
00	9/04	JHNU		DRAWING RELEASED								
REV	DATE	BY	CHK	DESCRIPTION		ECN #	PM	CUST	DRAWN BY JHNU	CHK'D	SCALE N/A	DRAWING NO. C41437