



Chipsmall Limited consists of a professional team with an average of over 10 year of expertise in the distribution of electronic components. Based in Hongkong, we have already established firm and mutual-benefit business relationships with customers from,Europe,America and south Asia,supplying obsolete and hard-to-find components to meet their specific needs.

With the principle of “Quality Parts,Customers Priority,Honest Operation,and Considerate Service”,our business mainly focus on the distribution of electronic components. Line cards we deal with include Microchip,ALPS,ROHM,Xilinx,Pulse,ON,Everlight and Freescale. Main products comprise IC,Modules,Potentiometer,IC Socket,Relay,Connector.Our parts cover such applications as commercial,industrial, and automotives areas.

We are looking forward to setting up business relationship with you and hope to provide you with the best service and solution. Let us make a better world for our industry!



## Contact us

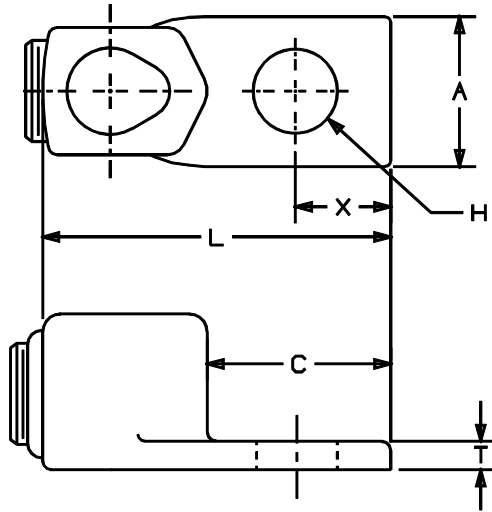
Tel: +86-755-8981 8866 Fax: +86-755-8427 6832

Email & Skype: info@chipsmall.com Web: www.chipsmall.com

Address: A1208, Overseas Decoration Building, #122 Zhenhua RD., Futian, Shenzhen, China



THIS COPY IS PROVIDED ON A RESTRICTED BASIS AND IS NOT TO BE USED IN ANY WAY DETRIMENTAL TO THE INTERESTS OF PANDUIT CORP.



**NOTES:**

1. UL LISTED.
2. FOR COPPER WIRE ONLY.
3. IF HEX KEY IS NOT GIVEN, FLAT HEAD SCREW IS USED.
4. MADE IN THE USA.
5. SADDLE/PLATE PROVIDES UNIFORM CLAMPING FORCE WITHOUT DISTORTING CABLE SHAPE.



CATALOG NUMBER	CONDUCTOR RANGE	APPROXIMATE DIMENSIONS						WRENCH SIZE	TORQUE VALUE IN-LBS
		A	C	H	L	X	T		
HLA4-1-90-X	8 SOLID-4 STR.	.56	.63	.28	1.63	.31	.19	SCREW DRIVER SLOT	35
HLA8-1-90-X	4 SOLID-1 STR.	.75	.69	.28	1.50	.34	.22	7/16	100
HLA13-1-90-5	1 STR.-2/0 STR.	.81	.88	.44	2.38	.44	.22	9/16	250
HLA21-1-90-5	2/0 STR.-4/0 STR.	1.00	1.00	.44	2.69	.50	.25	9/16	250

C41193\_01

							<b>PANDUIT</b> CORP.		TINLEY PARK, ILLINOIS		
01	10/98	WB		ADDED NOTE 5				ONE BOLT HOLE 90° UPRIGHT PREMIUM LUG TYPE HLA CUSTOMER DRAWING			
00	10/96	TM	WB	RELEASED	05216	LA	RM				
REV	DATE	BY	CHK	DESCRIPTION	ECN #	APP	PM	DRAWN BY EJD	CHK'D WJB	SCALE NONE	DRAWING NO. C41193