



Chipsmall Limited consists of a professional team with an average of over 10 year of expertise in the distribution of electronic components. Based in Hongkong, we have already established firm and mutual-benefit business relationships with customers from,Europe,America and south Asia,supplying obsolete and hard-to-find components to meet their specific needs.

With the principle of “Quality Parts,Customers Priority,Honest Operation,and Considerate Service”,our business mainly focus on the distribution of electronic components. Line cards we deal with include Microchip,ALPS,ROHM,Xilinx,Pulse,ON,Everlight and Freescale. Main products comprise IC,Modules,Potentiometer,IC Socket,Relay,Connector.Our parts cover such applications as commercial,industrial, and automotives areas.

We are looking forward to setting up business relationship with you and hope to provide you with the best service and solution. Let us make a better world for our industry!



Contact us

Tel: +86-755-8981 8866 Fax: +86-755-8427 6832

Email & Skype: info@chipsmall.com Web: www.chipsmall.com

Address: A1208, Overseas Decoration Building, #122 Zhenhua RD., Futian, Shenzhen, China



Electrical / Environmental

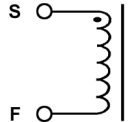
HM17

Radial Lead Inductors

- Operating Temperature Range -40°C to +125°C
- Ambient Temperature, Maximum 85°C



Schematic



Specifications @ 25°C

Part Number	Inductance			I _{rated} ⁽²⁾ (A)	DCR (Ω) Max.	Part Number	Inductance			I _{rated} ⁽²⁾ (A)	DCR (Ω) Max.
	Lo (μH)	Tolerance ⁽¹⁾ (%)	Test Freq. (kHz)				Lo (μH)	Tolerance ⁽¹⁾ (%)	Test Freq. (kHz)		
HM17-654220LF	22	± 20%	100	0.90	0.18	HM17-664331LF	330	± 10%	1	0.33	1.48
HM17-654270LF	27	± 20%	100	0.81	0.21	HM17-664391LF	390	± 10%	1	0.30	1.66
HM17-654330LF	33	± 20%	100	0.74	0.27	HM17-664471LF	470	± 10%	1	0.27	1.91
HM17-654390LF	39	± 20%	100	0.68	0.29	HM17-664561LF	560	± 10%	1	0.25	2.31
HM17-654470LF	47	± 20%	100	0.62	0.34	HM17-664681LF	680	± 10%	1	0.23	2.67
HM17-654560LF	56	± 20%	100	0.57	0.42	HM17-664821LF	820	± 10%	1	0.21	3.10
HM17-654680LF	68	± 20%	100	0.51	0.48	HM17-664102LF	1000	± 10%	1	0.19	4.45
HM17-654820LF	82	± 20%	100	0.47	0.55	HM17-855100LF	10	± 20%	100	2.50	0.07
HM17-654101LF	100	± 10%	1	0.42	0.68	HM17-855120LF	12	± 20%	100	2.40	0.08
HM17-654121LF	120	± 10%	1	0.39	0.77	HM17-855150LF	15	± 20%	100	2.10	0.09
HM17-654151LF	150	± 10%	1	0.35	0.95	HM17-855180LF	18	± 20%	100	2.00	0.10
HM17-654181LF	180	± 10%	1	0.32	1.15	HM17-855220LF	22	± 20%	100	1.70	0.12
HM17-654221LF	220	± 10%	1	0.29	1.30	HM17-855270LF	27	± 20%	100	1.60	0.14
HM17-654271LF	270	± 10%	1	0.26	1.55	HM17-855330LF	33	± 20%	100	1.40	0.17
HM17-654331LF	330	± 10%	1	0.23	2.18	HM17-855390LF	39	± 20%	100	1.30	0.21
HM17-654391LF	390	± 10%	1	0.21	2.47	HM17-855470LF	47	± 20%	100	1.20	0.24
HM17-654471LF	470	± 10%	1	0.20	2.92	HM17-855560LF	56	± 20%	100	1.10	0.31
HM17-654561LF	560	± 10%	1	0.18	3.97	HM17-855680LF	68	± 20%	100	1.00	0.34
HM17-654681LF	680	± 10%	1	0.16	4.57	HM17-855820LF	82	± 20%	100	0.93	0.40
HM17-654821LF	820	± 10%	1	0.15	5.28	HM17-855101LF	100	± 10%	1	0.81	0.52
HM17-654102LF	1000	± 10%	1	0.13	7.06	HM17-855121LF	120	± 10%	1	0.76	0.59
HM17-664220LF	22	± 20%	100	1.27	0.11	HM17-855151LF	150	± 10%	1	0.67	0.71
HM17-664270LF	27	± 20%	100	1.14	0.14	HM17-855181LF	180	± 10%	1	0.62	0.89
HM17-664330LF	33	± 20%	100	1.03	0.17	HM17-855221LF	220	± 10%	1	0.54	1.04
HM17-664390LF	39	± 20%	100	0.95	0.19	HM17-855271LF	270	± 10%	1	0.49	1.28
HM17-664470LF	47	± 20%	100	0.87	0.23	HM17-855331LF	330	± 10%	1	0.44	1.47
HM17-664560LF	56	± 20%	100	0.80	0.26	HM17-855391LF	390	± 10%	1	0.41	1.67
HM17-664680LF	68	± 20%	100	0.72	0.28	HM17-855471LF	470	± 10%	1	0.38	1.95
HM17-664820LF	82	± 20%	100	0.66	0.39	HM17-855561LF	560	± 10%	1	0.35	2.83
HM17-664101LF	100	± 10%	1	0.59	0.43	HM17-855681LF	680	± 10%	1	0.32	3.25
HM17-664121LF	120	± 10%	1	0.54	0.54	HM17-855821LF	820	± 10%	1	0.31	3.82
HM17-664151LF	150	± 10%	1	0.48	0.64	HM17-855102LF	1000	± 10%	1	0.25	5.28
HM17-664181LF	180	± 10%	1	0.44	0.74	HM17-855122LF	1200	± 10%	1	0.23	6.03
HM17-664221LF	220	± 10%	1	0.40	0.96	HM17-855152LF	1500	± 10%	1	0.21	7.15
HM17-664271LF	270	± 10%	1	0.36	1.12	HM17-855182LF	1800	± 10%	1	0.20	8.26

Specifications @ 25°C (Cont'd)

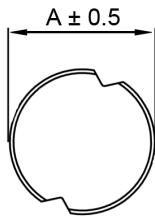
Part Number	Inductance			DCR (Ω) Max.	Part Number	Inductance			DCR (Ω) Max.		
	Lo (μH)	Tolerance ⁽¹⁾ (%)	Test Freq. (kHz)			Lo (μH)	Tolerance ⁽¹⁾ (%)	Test Freq. (kHz)			
HM17-855222LF	2200	± 10%	1	0.18	11.10	HM17-895100LF	10	± 20%	100	2.60	0.04
HM17-855272LF	2700	± 10%	1	0.16	13.10	HM17-895120LF	12	± 20%	100	2.60	0.04
HM17-855332LF	3300	± 10%	1	0.14	15.90	HM17-895150LF	15	± 20%	100	2.10	0.05
HM17-855392LF	3900	± 10%	1	0.13	18.00	HM17-895180LF	18	± 20%	100	2.00	0.05
HM17-855472LF	4700	± 10%	1	0.12	23.90	HM17-895220LF	22	± 20%	100	1.70	0.06
HM17-855562LF	5600	± 10%	1	0.11	26.80	HM17-895270LF	27	± 20%	100	1.60	0.06
HM17-855682LF	6800	± 10%	1	0.098	31.70	HM17-895330LF	33	± 20%	100	1.40	0.07
HM17-855822LF	8200	± 10%	1	0.088	46.50	HM17-895390LF	39	± 20%	100	1.40	0.08
HM17-855103LF	10000	± 10%	1	0.081	55.70	HM17-895470LF	47	± 20%	100	1.30	0.10
HM17-875100LF	10	± 20%	100	2.90	0.05	HM17-895560LF	56	± 20%	100	1.20	0.11
HM17-875120LF	12	± 20%	100	2.50	0.06	HM17-895680LF	68	± 20%	100	1.10	0.14
HM17-875150LF	15	± 20%	100	2.20	0.07	HM17-895820LF	82	± 20%	100	1.00	0.16
HM17-875180LF	18	± 20%	100	1.90	0.08	HM17-895101LF	100	± 10%	1	0.90	0.19
HM17-875220LF	22	± 20%	100	1.80	0.09	HM17-895121LF	120	± 10%	1	0.82	0.22
HM17-875270LF	27	± 20%	100	1.70	0.11	HM17-895151LF	150	± 10%	1	0.74	0.27
HM17-875330LF	33	± 20%	100	1.50	0.13	HM17-895181LF	180	± 10%	1	0.71	0.31
HM17-875390LF	39	± 20%	100	1.30	0.14	HM17-895221LF	220	± 10%	1	0.64	0.38
HM17-875470LF	47	± 20%	100	1.30	0.15	HM17-895271LF	270	± 10%	1	0.57	0.53
HM17-875560LF	56	± 20%	100	1.20	0.18	HM17-895331LF	330	± 10%	1	0.51	0.61
HM17-875680LF	68	± 20%	100	1.10	0.20	HM17-895391LF	390	± 10%	1	0.48	0.69
HM17-875820LF	82	± 20%	100	1.00	0.24	HM17-895471LF	470	± 10%	1	0.43	0.89
HM17-875101LF	100	± 10%	1	0.89	0.28	HM17-895561LF	560	± 10%	1	0.40	1.01
HM17-875121LF	120	± 10%	1	0.81	0.36	HM17-895681LF	680	± 10%	1	0.35	1.18
HM17-875151LF	150	± 10%	1	0.72	0.42	HM17-895821LF	820	± 10%	1	0.32	1.57
HM17-875181LF	180	± 10%	1	0.66	0.57	HM17-895102LF	1000	± 10%	1	0.30	1.84
HM17-875221LF	220	± 10%	1	0.57	0.63	HM17-895122LF	1200	± 10%	1	0.27	2.10
HM17-875271LF	270	± 10%	1	0.51	0.88	HM17-895152LF	1500	± 10%	1	0.23	2.80
HM17-875331LF	330	± 10%	1	0.46	1.05	HM17-895182LF	1800	± 10%	1	0.21	3.21
HM17-875391LF	390	± 10%	1	0.44	1.17	HM17-895222LF	2200	± 10%	1	0.19	4.21
HM17-875471LF	470	± 10%	1	0.41	1.34	HM17-895272LF	2700	± 10%	1	0.17	4.94
HM17-875561LF	560	± 10%	1	0.36	1.72	HM17-895332LF	3300	± 10%	1	0.15	6.16
HM17-875681LF	680	± 10%	1	0.33	1.96	HM17-895392LF	3900	± 10%	1	0.14	6.84
HM17-875821LF	820	± 10%	1	0.30	2.56	HM17-895472LF	4700	± 10%	1	0.13	7.89
HM17-875102LF	1000	± 10%	1	0.27	2.94	HM17-895562LF	5600	± 10%	1	0.12	11.50
HM17-875122LF	1200	± 10%	1	0.24	4.04	HM17-895682LF	6800	± 10%	1	0.11	13.20
HM17-875152LF	1500	± 10%	1	0.22	4.70	HM17-895822LF	8200	± 10%	1	0.10	15.20
HM17-875182LF	1800	± 10%	1	0.20	5.05	HM17-895103LF	10000	± 10%	1	89m	22.00
HM17-875222LF	2200	± 10%	1	0.18	6.25	HM17-895123LF	12000	± 10%	1	73m	25.00
HM17-875272LF	2700	± 10%	1	0.16	8.72	HM17-895153LF	15000	± 10%	1	68m	29.10
HM17-875332LF	3300	± 10%	1	0.15	10.6	HM17-895183LF	18000	± 10%	1	66m	38.90
HM17-875392LF	3900	± 10%	1	0.14	14.2	HM17-895223LF	22000	± 10%	1	59m	44.90
HM17-875472LF	4700	± 10%	1	0.12	16.7	HM17-895273LF	27000	± 10%	1	52m	55.70
HM17-875562LF	5600	± 10%	1	0.11	18.7	HM17-895333LF	33000	± 10%	1	48m	64.20
HM17-875682LF	6800	± 10%	1	0.10	21.8	HM17-895393LF	39000	± 10%	1	42m	74.20
HM17-875822LF	8200	± 10%	1	93m	28.7	HM17-895473LF	47000	± 10%	1	38m	96.40
HM17-875103LF	10000	± 10%	1	84m	33.0						

Notes: (1) Tolerance : 10 ~ 82μH ± 20% (M), 100 ~ 10000 μH ± 10% (K).

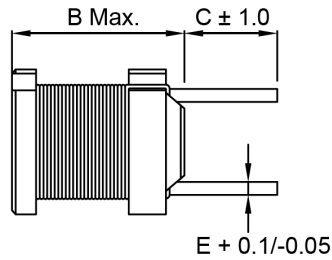
(2) I_{rated} is the DC current at which inductance will be decreased by approximately 10% from its initial (zero DC) value.

Outline Dimensions (mm)

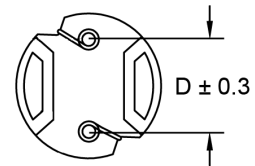
Top View



Side View



Bottom View



Case Size	A	B	C	D	E
654	6.0	5.0	4.0	4.0	0.5
664	6.0	6.5	4.0	4.0	0.5
855	7.8	5.5	5.0	5.0	0.7
875	7.8	7.5	5.0	5.0	0.7
895	7.8	9.5	5.0	5.0	0.7

Packaging

Standard: Boxes

Capacity = 100 Units

Carton

Capacity = 6000 Units

Ordering Information

