



Chipsmall Limited consists of a professional team with an average of over 10 year of expertise in the distribution of electronic components. Based in Hongkong, we have already established firm and mutual-benefit business relationships with customers from,Europe,America and south Asia,supplying obsolete and hard-to-find components to meet their specific needs.

With the principle of “Quality Parts,Customers Priority,Honest Operation,and Considerate Service”,our business mainly focus on the distribution of electronic components. Line cards we deal with include Microchip,ALPS,ROHM,Xilinx,Pulse,ON,Everlight and Freescale. Main products comprise IC,Modules,Potentiometer,IC Socket,Relay,Connector.Our parts cover such applications as commercial,industrial, and automotives areas.

We are looking forward to setting up business relationship with you and hope to provide you with the best service and solution. Let us make a better world for our industry!



Contact us

Tel: +86-755-8981 8866 Fax: +86-755-8427 6832

Email & Skype: info@chipsmall.com Web: www.chipsmall.com

Address: A1208, Overseas Decoration Building, #122 Zhenhua RD., Futian, Shenzhen, China



Electrical / Environmental

- Operating Temperature Range -40°C to +125°C
- Ambient Temperature, Maximum 85°C

NEW

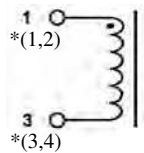
**RoHS
Compliant**

HM17A

Vertical Mount Inductors



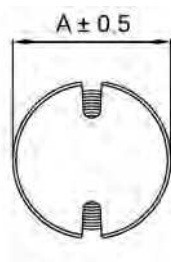
Schematic



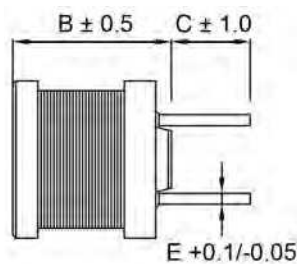
Note : Part number ends with * is 4 terminal hook up

Outline Dimensions (mm)

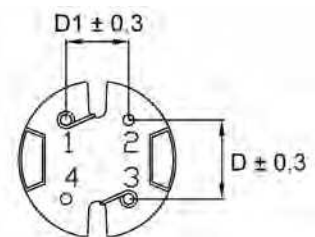
Top View



Side View



Bottom View



Case Size	A	B	C	D	D1	E
106	10.0	6.0	3.5	5.0	4.0	0.7
108	10.0	8.0	3.5	5.0	4.0	0.7
1010	10.0	10.0	3.5	5.0	4.0	0.7

Packaging

Standard: Boxes

Capacity = 100 Units

Carton

Capacity = 6000 Units

Last Updated : 12 May 2011

Specifications @ 25°C

Part Number	Inductance			I _{rated} ⁽²⁾ (Adc)	DCR (Ω) Max.	Part Number	Inductance			I _{rated} ⁽²⁾ (Adc)	DCR (Ω) Max.
	Lo (μH)	Tol. (1) (%)	Test Freq. (kHz)				Lo (μH)	Tol. (1) (%)	Test Freq. (kHz)		
HM17A-106100LF	10	± 20%	100	3.60	0.040	HM17A-108121LF	120	± 10%	1	1.30	0.240
HM17A-106120LF	12	± 20%	100	3.30	0.044	HM17A-108151LF	150	± 10%	1	1.20	0.320
HM17A-106150LF	15	± 20%	100	2.90	0.058	HM17A-108181LF	180	± 10%	1	1.10	0.350
HM17A-106180LF	18	± 20%	100	2.70	0.064	HM17A-108221LF	220	± 10%	1	0.96	0.450
HM17A-106220LF	22	± 20%	100	2.40	0.088	HM17A-108271LF	270	± 10%	1	0.87	0.610
HM17A-106270LF	27	± 20%	100	2.20	0.100	HM17A-108331LF	330	± 10%	1	0.79	0.690
HM17A-106330LF	33	± 20%	100	2.00	0.110	HM17A-108391LF	390	± 10%	1	0.72	0.780
HM17A-106390LF	39	± 20%	100	1.80	0.140	HM17A-108471LF	470	± 10%	1	0.66	1.000
HM17A-106470LF	47	± 20%	100	1.70	0.160	HM17A-108561LF	560	± 10%	1	0.60	1.200
HM17A-106560LF	56	± 20%	100	1.50	0.190	HM17A-108681LF	680	± 10%	1	0.55	1.400
HM17A-106680LF	68	± 20%	100	1.40	0.220	HM17A-108821LF	820	± 10%	1	0.50	1.800
HM17A-106820LF	82	± 20%	100	1.30	0.290	HM17A-108102LF	1000	± 10%	1	0.45	2.100
HM17A-106101LF	100	± 10%	1	1.30	0.320	HM17A-1010100LF*	10	± 20%	100	5.30	0.022
HM17A-106121LF	120	± 10%	1	1.20	0.380	HM17A-1010120LF*	12	± 20%	100	4.90	0.023
HM17A-106151LF	150	± 10%	1	1.00	0.500	HM17A-1010150LF*	15	± 20%	100	4.40	0.026
HM17A-106181LF	180	± 10%	1	0.84	0.560	HM17A-1010180LF*	18	± 20%	100	4.00	0.033
HM17A-106221LF	220	± 10%	1	0.76	0.780	HM17A-1010220LF*	22	± 20%	100	3.60	0.037
HM17A-106271LF	270	± 10%	1	0.69	0.920	HM17A-1010270LF*	27	± 20%	100	3.30	0.048
HM17A-106331LF	330	± 10%	1	0.62	1.100	HM17A-1010330LF*	33	± 20%	100	2.90	0.055
HM17A-106391LF	390	± 10%	1	0.57	1.300	HM17A-1010390LF	39	± 20%	100	2.70	0.073
HM17A-106471LF	470	± 10%	1	0.52	1.500	HM17A-1010470LF	47	± 20%	100	2.50	0.083
HM17A-106561LF	560	± 10%	1	0.48	1.900	HM17A-1010560LF	56	± 20%	100	2.30	0.092
HM17A-106681LF	680	± 10%	1	0.43	2.200	HM17A-1010680LF	68	± 20%	100	2.10	0.120
HM17A-106821LF	820	± 10%	1	0.40	2.600	HM17A-1010820LF	82	± 20%	100	1.90	0.140
HM17A-106102LF	1000	± 10%	1	0.36	3.200	HM17A-1010101LF	100	± 10%	1	1.70	0.160
HM17A-108100LF*	10	± 20%	100	4.50	0.027	HM17A-1010121LF	120	± 10%	1	1.50	0.200
HM17A-108120LF*	12	± 20%	100	4.10	0.031	HM17A-1010151LF	150	± 10%	1	1.40	0.230
HM17A-108150LF*	15	± 20%	100	3.70	0.036	HM17A-1010181LF	180	± 10%	1	1.30	0.310
HM17A-108180LF	18	± 20%	100	3.40	0.049	HM17A-1010221LF	220	± 10%	1	1.10	0.340
HM17A-108220LF	22	± 20%	100	3.10	0.055	HM17A-1010271LF	270	± 10%	1	1.00	0.400
HM17A-108270LF	27	± 20%	100	2.80	0.062	HM17A-1010331LF	330	± 10%	1	0.93	0.520
HM17A-108330LF	33	± 20%	100	2.50	0.078	HM17A-1010391LF	390	± 10%	1	0.86	0.650
HM17A-108390LF	39	± 20%	100	2.30	0.087	HM17A-1010471LF	470	± 10%	1	0.78	0.710
HM17A-108470LF	47	± 20%	100	2.10	0.099	HM17A-1010561LF	560	± 10%	1	0.71	1.000
HM17A-108560LF	56	± 20%	100	1.90	0.130	HM17A-1010681LF	680	± 10%	1	0.65	1.100
HM17A-108680LF	68	± 20%	100	1.70	0.140	HM17A-1010821LF	820	± 10%	1	0.59	1.300
HM17A-108820LF	82	± 20%	100	1.60	0.160	HM17A-1010102LF	1000	± 10%	1	0.53	1.700
HM17A-108101LF	100	± 10%	1	1.40	0.210						

Notes: (1) Tolerance : 10 ~ 82μH ± 20% (M), 100 ~ 1000 μH ± 10% (K).

(2) I_{rated} is the DC current at which inductance will be decreased by approximately 10% from its initial (zero DC) value.

Ordering Information

