



Chipsmall Limited consists of a professional team with an average of over 10 year of expertise in the distribution of electronic components. Based in Hongkong, we have already established firm and mutual-benefit business relationships with customers from,Europe,America and south Asia,supplying obsolete and hard-to-find components to meet their specific needs.

With the principle of “Quality Parts,Customers Priority,Honest Operation,and Considerate Service”,our business mainly focus on the distribution of electronic components. Line cards we deal with include Microchip,ALPS,ROHM,Xilinx,Pulse,ON,Everlight and Freescale. Main products comprise IC,Modules,Potentiometer,IC Socket,Relay,Connector.Our parts cover such applications as commercial,industrial, and automotives areas.

We are looking forward to setting up business relationship with you and hope to provide you with the best service and solution. Let us make a better world for our industry!



## Contact us

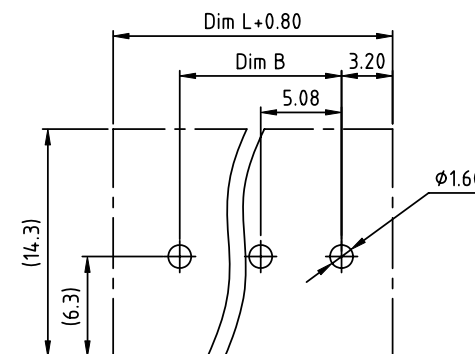
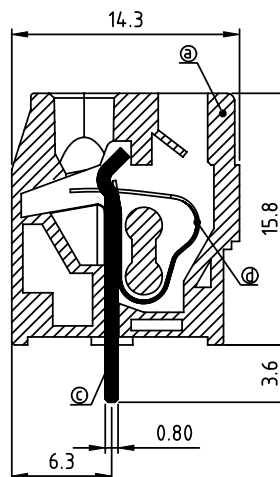
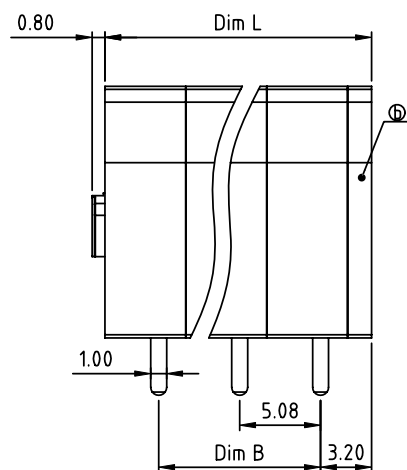
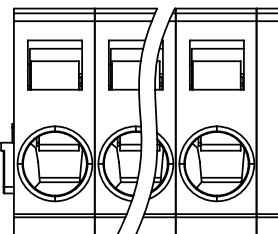
Tel: +86-755-8981 8866 Fax: +86-755-8427 6832

Email & Skype: [info@chipsmall.com](mailto:info@chipsmall.com) Web: [www.chipsmall.com](http://www.chipsmall.com)

Address: A1208, Overseas Decoration Building, #122 Zhenhua RD., Futian, Shenzhen, China



PRODUCT NUMBER	PITCH
HMxx50x000J0G	5.08mm



RECOMMENDED P.C.B LAYOUT  
TOP VIEW

#### Material:

- Item① Insulator body: Thermoplastic (UL94V-0)
- Item② Insulating cover: Thermoplastic (UL94V-0)
- Item③ Solder pin: Brass.Tin plated
- Item④ Wire guard: Stainless steel

#### Electrical:

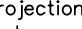


- Voltage rating: 250V
- Current rating: 8A
- Wire range:
- Solid wire(AWG): 12-28
- Stranded wire(AWG): 12-28
- Wire strip length: 8-9mm
- Withstanding Voltage: 1.5KV
- Operating temperature: -40°C to +115°C
- Soldering temperature: 260°C±5°C/5 Sec
- Safety Approval:

N=Number of poles  
Dim L=N×5.08+1.5  
Dim B=(N-1)×5.08

PART NO.: HM xx 50 x 000J0 G

Poles	Dim L	Dim B
1p	±0.15	—
2-6p	±0.20	±0.15
7-12p	±0.30	±0.25
13-18p	±0.40	±0.35
19-24p	±0.45	±0.40

No. of poles	Color	RoHS compliant
End Stackable	0 Black (RAL9005)	(lead<4%)
01 1 poles	2 Red (RAL3001/D)	In copper Alloy
02 2 poles	3 Orange(RAL2011/P)	
...	4 Yellow(RAL1018/A)	
...	5 Green(RAL6018/T)	
24 24 poles	6 Blue (RAL5015/A)	
	8 Grey(RAL7004/P)	
	9 White(RAL1102)	
	C Multiple colors	

mat'l. code				surface ASME Y14.5		tolerance ASME Y14.5		projection 		product family TERMINAL BLOCK			
ltr	ecn	no	dr	date	tolerances unless otherwise specified					title			
					angles linear	X.±0.5		TERMINAL BLOCK					
						X.X±0.3		SPRING CLAMP,90D WIRE INLET,DIP SOLDER					
						X°.XX±0.1		scale					
					dr	EVIN ZHONG	052914		dwg no		sheet 1 of 1		size
					engr	EVIN ZHONG	052914		HMxx50x000J0G		A		
					chr	HANKE FENG	052914						
					appd	SHI JUN	052914						
sheet index		revision sheet		A	1								