



Chipsmall Limited consists of a professional team with an average of over 10 year of expertise in the distribution of electronic components. Based in Hongkong, we have already established firm and mutual-benefit business relationships with customers from,Europe,America and south Asia,supplying obsolete and hard-to-find components to meet their specific needs.

With the principle of "Quality Parts,Customers Priority,Honest Operation,and Considerate Service",our business mainly focus on the distribution of electronic components. Line cards we deal with include Microchip,ALPS,ROHM,Xilinx,Pulse,ON,Everlight and Freescale. Main products comprise IC,Modules,Potentiometer,IC Socket,Relay,Connector.Our parts cover such applications as commercial,industrial, and automotives areas.

We are looking forward to setting up business relationship with you and hope to provide you with the best service and solution. Let us make a better world for our industry!



Contact us

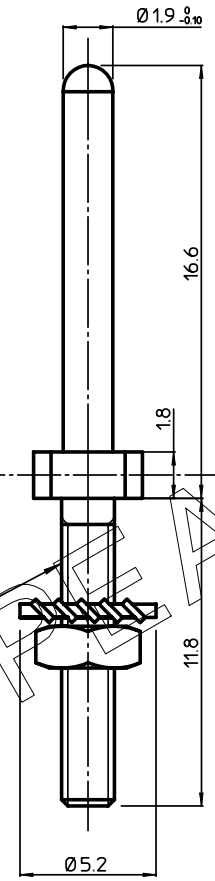
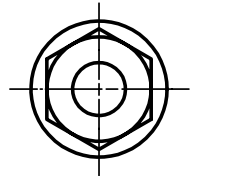
Tel: +86-755-8981 8866 Fax: +86-755-8427 6832

Email & Skype: info@chipsmall.com Web: www.chipsmall.com

Address: A1208, Overseas Decoration Building, #122 Zhenhua RD., Futian, Shenzhen, China



BS,C ,201911,012	C	GEN. ST.	01	02	03	04	05	06	07	08	0D	50	60	70	80	90	REV.	DATE	DESCRIPTION	BY	C 'K' D'																					
		INT. ST.	10	11	12	13	14	18	20	31	32	33	34	38	39	40	42	43	44	45	46	48	56	70	72	73	75	76	81	82	83	84	88	A	2001-09-14	CONVERSION REVISION 02	KN					
																																					B	2005-12-30	105-0244	ALEX B	BKP	
																																						C	2006-08-03	106-0119	VIVEK	BKP



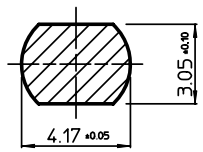
2-56 UNC-2A THREAD

LEAD FREE INDICATOR : LF = LEAD FREE

HM2G06LF

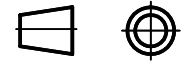
NOTES

1. MATERIAL GUIDE PIN : 1/2 HARD BRAS.
2. FINISH: 0.3 TO 3 μ Ni PLATED ALLOVER.
3. THE PRODUCT (LF) MEETS EUROPEAN UNION DIRECTIVES AND OTHER OTHER COUNTRY REGULATIONS AS DESCRIBED IN GS-22-008



1DEC ±0.2 2DEC ±0.1 ANGLES ±1°	APPR.	DATE	SIGN.	MILLIPACS 2 / GUIDING PIN FOR 8 ROW MALE	
	DRAFT	1998-10-05	M.Fret	CAT. No. HM2G06LF	
	CHECKED			 www.fciconnect.com	
WE RESERVE THE RIGHT TO CHANGE DIMENSIONS OR REQUIREMENTS WITHOUT PRIOR NOTICE.	PROD. MGR.				SCALE
	PR. ENG. MGR.				3 / 1
ALL DIMENSIONS IN MM	PR. MGT. MGR.				

REFERENCES



BS,C ,201911,012 C
DRAWING No. CUSTOMER DRAWING REVISION
STATUS: Released Printed: Dec 02, 2007

THIS IS OUR EXCLUSIVE PROPERTY. IT IS NOT TO BE COPIED, REPRINTED OR DISCLOSED TO A THIRD PARTY. NOR USED FOR MANUFACTURING WITHOUT OUR WRITTEN CONSENT. AND HAS TO BE RETURNED TO US IN CASE OF NO USAGE
DIT IS ONZE EIGENDOOD EN MAG NOCH NAEMAAKT, HERDRUKT, OVERGEMAKT AAN DERDEN. NOCH VOOR FABRIKATIE GEBRUIKT WORDEN. ZONDER ONZE SCHRIFTELIJKE TOELATING. BIJ NIET GEBRUIK IS TERUGSENDING VERPLICHT.

EUROPEAN PROJECTION

PDM: Rev:C

STATUS: Released

Printed: Dec 02, 2007