



Chipsmall Limited consists of a professional team with an average of over 10 year of expertise in the distribution of electronic components. Based in Hongkong, we have already established firm and mutual-benefit business relationships with customers from,Europe,America and south Asia,supplying obsolete and hard-to-find components to meet their specific needs.

With the principle of “Quality Parts,Customers Priority,Honest Operation,and Considerate Service”,our business mainly focus on the distribution of electronic components. Line cards we deal with include Microchip,ALPS,ROHM,Xilinx,Pulse,ON,Everlight and Freescale. Main products comprise IC,Modules,Potentiometer,IC Socket,Relay,Connector.Our parts cover such applications as commercial,industrial, and automotives areas.

We are looking forward to setting up business relationship with you and hope to provide you with the best service and solution. Let us make a better world for our industry!



## Contact us

Tel: +86-755-8981 8866 Fax: +86-755-8427 6832

Email & Skype: info@chipsmall.com Web: www.chipsmall.com

Address: A1208, Overseas Decoration Building, #122 Zhenhua RD., Futian, Shenzhen, China

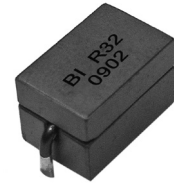


## Electrical / Environmental

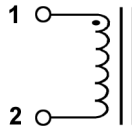
# HM37

## High Current Low Loss Ferrite Cube Inductors

- Operating Temperature Range -40°C to +130°C



## Schematic

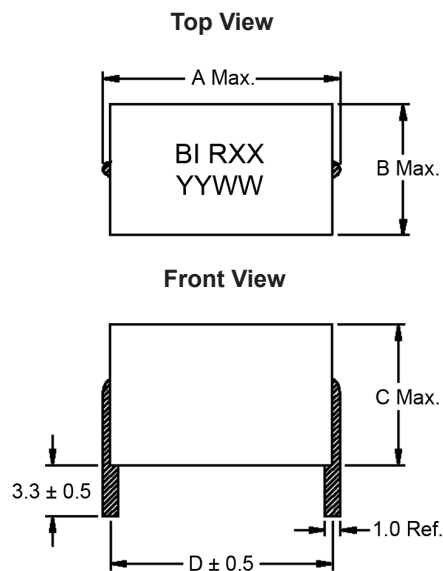


## Specifications @ 25°C

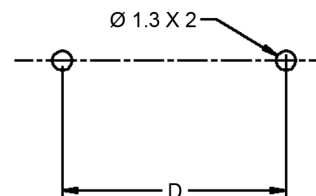
Part Number	Inductance 100 kHz, 0.1 V		Heating Current <sup>(1)</sup> (Adc)	I <sub>sat</sub> <sup>(2)</sup> (Adc)	DCR (mΩ) ±5%
	@ 0 A nH ± 10%	@ I <sub>sat</sub> nH Typ.			
HM37-1007R17LF	170	158	42	58	0.37
HM37-1007R19LF	190	180	42	50	0.37
HM37-1609R32LF	320	260	48	50	0.47

Notes: (1) The heating current is the DC current which causes the component temperature to increase by approximately 50°C. This current is determined by soldering the component on a typical application PCB, and then applying the current to the device for 30 minutes.  
 (2) The saturation current (I<sub>sat</sub>) is the approximate current at which inductance will be decreased by 20% from its initial (zero DC) value.

## Outline Dimensions (mm)



## Recommended Solder Pad Layout



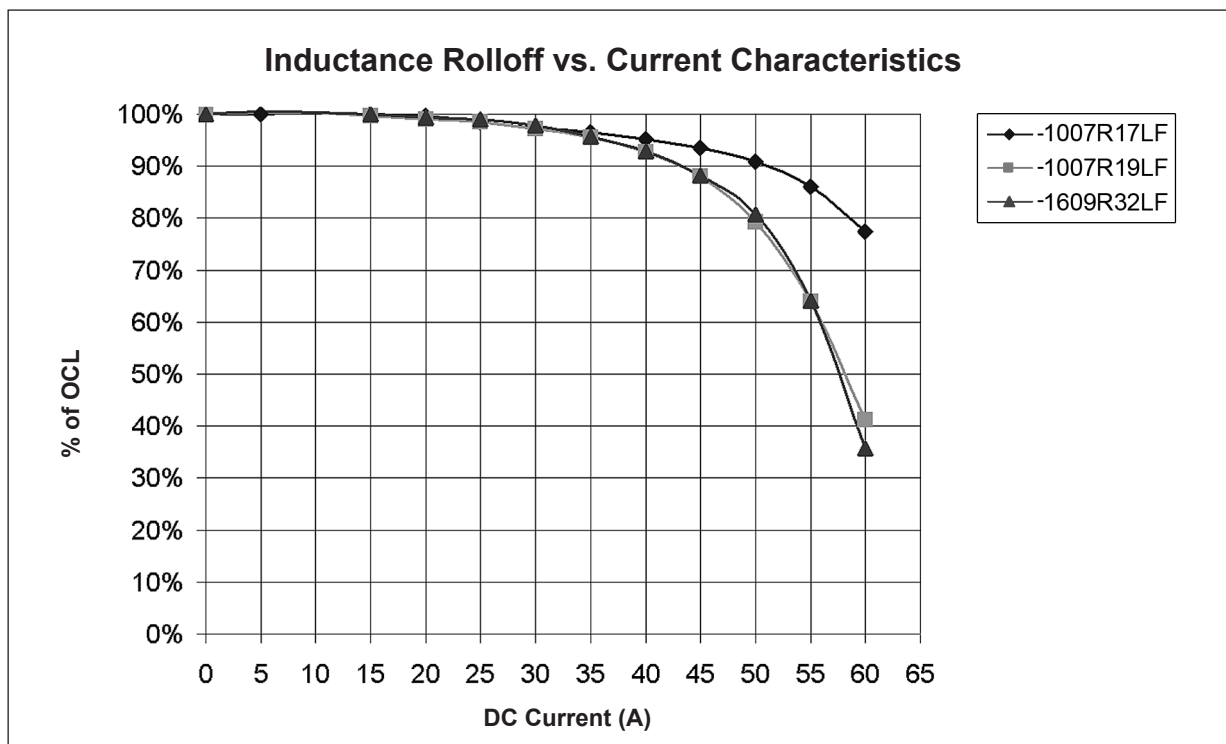
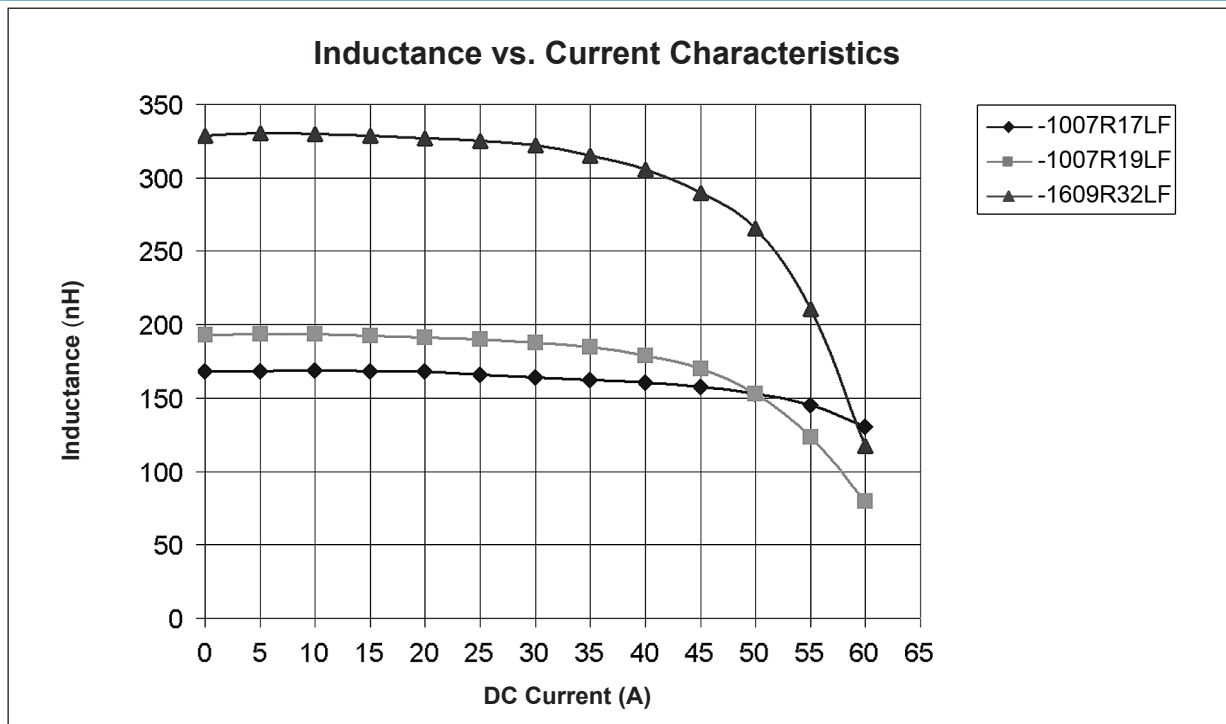
Case Size	A	B	C	D
1007	10.0	7.0	9.5	8.5
1609	15.9	8.9	9.2	14.6

## Packaging

Standard: Vacuum Tray

Case Size	Capacity Per Carton (Units)
1007	800
1609	660

## Electrical Characteristics @ 25°C



## Ordering Information

Model Series **HM37 - 1007 R17 LF**

Case Size : **10** -- (First 2 digits) Length Dimension  
**07** -- (Last 2 digits) Width Dimension

**LF** -- Lead-Free  
**R17** -- Inductance Code