



Chipsmall Limited consists of a professional team with an average of over 10 year of expertise in the distribution of electronic components. Based in Hongkong, we have already established firm and mutual-benefit business relationships with customers from,Europe,America and south Asia,supplying obsolete and hard-to-find components to meet their specific needs.

With the principle of “Quality Parts,Customers Priority,Honest Operation,and Considerate Service”,our business mainly focus on the distribution of electronic components. Line cards we deal with include Microchip,ALPS,ROHM,Xilinx,Pulse,ON,Everlight and Freescale. Main products comprise IC,Modules,Potentiometer,IC Socket,Relay,Connector.Our parts cover such applications as commercial,industrial, and automotives areas.

We are looking forward to setting up business relationship with you and hope to provide you with the best service and solution. Let us make a better world for our industry!



## Contact us

Tel: +86-755-8981 8866 Fax: +86-755-8427 6832

Email & Skype: info@chipsmall.com Web: www.chipsmall.com

Address: A1208, Overseas Decoration Building, #122 Zhenhua RD., Futian, Shenzhen, China



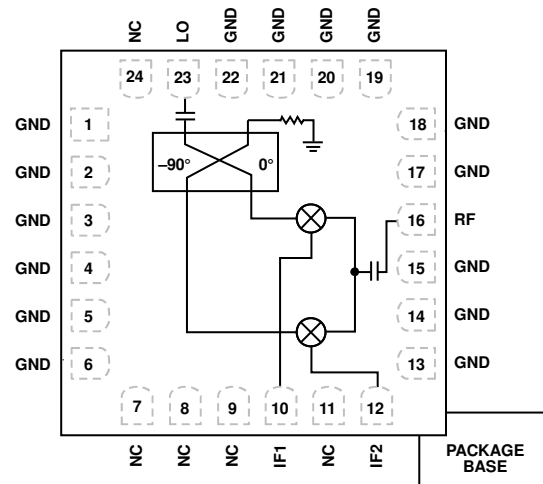
### FEATURES

- Passive, wideband I/Q mixer
- RF and local oscillator (LO) range: 6 GHz to 26.5 GHz
- Wide IF of dc to 5 GHz
- Single-ended RF, LO, and IF
- Conversion loss: -10 dB
- Input IP3: 24 dBm (typical)
- Image rejection: 25 dBm (typical)
- High LO to RF isolation: 35 dB
- High LO to IF isolation: 37 dB
- Phase balance:  $\pm 5^\circ$
- Exposed paddle, 4 mm  $\times$  4 mm, 24-lead LFCSP package

### APPLICATIONS

- Test and measurement instrumentation
- Military, aerospace, and defense applications
- Microwave point-to-point base stations

### FUNCTIONAL BLOCK DIAGRAM



- NOTES  
1. NC = NO CONNECT. DO NOT CONNECT TO THIS PIN.

Figure 1.

### GENERAL DESCRIPTION

The **HMC8191** is a passive wideband I/Q MMIC mixer that can be used either as an image reject mixer for receiver operations or as a single sideband upconverter for transmitter operations. With an RF and LO range of 6 GHz to 26.5 GHz, and an IF bandwidth of dc to 5 GHz, the **HMC8191** is ideal for applications requiring wide frequency range, excellent RF performance, and a simpler design with fewer parts and a smaller printed circuit board (PCB) footprint. A single **HMC8191** can replace multiple narrowband mixers in a design. The inherent I/Q architecture of the **HMC8191** offers excellent image rejection and thereby eliminates the need for expensive filtering for unwanted sidebands. The mixer also provides

excellent LO to RF and LO to IF isolation and reduces the effect of LO leakage to ensure signal integrity

Being a passive mixer, the **HMC8191** does not require any dc power sources. It offers a lower noise figure compared to an active mixer, ensuring superior dynamic range for high performance and precision applications.

The **HMC8191** is fabricated on a GaAs MESFET process and uses Analog Devices, Inc., mixer cells and a 90-degree hybrid. It is available in a compact 4 mm  $\times$  4 mm, 24-lead LFCSP package and operates over a -40°C to +85°C temperature range. An evaluation board for this device is also available.

# HMC8191\* PRODUCT PAGE QUICK LINKS

Last Content Update: 02/23/2017

---

## COMPARABLE PARTS

View a parametric search of comparable parts.

## EVALUATION KITS

- HMC8191 Evaluation Board

## DOCUMENTATION

### Data Sheet

- HMC8191: 6 GHz to 26 GHz Wideband I/Q Mixer

## REFERENCE MATERIALS

### Technical Articles

- The Changing Landscape of Frequency Mixing Components

## DESIGN RESOURCES

- HMC8191 Material Declaration
- PCN-PDN Information
- Quality And Reliability
- Symbols and Footprints

## DISCUSSIONS

View all HMC8191 EngineerZone Discussions.

## SAMPLE AND BUY

Visit the product page to see pricing options.

## TECHNICAL SUPPORT

Submit a technical question or find your regional support number.

## DOCUMENT FEEDBACK

Submit feedback for this data sheet.

---

**TABLE OF CONTENTS**

Features .....	1	Pin Configuration and Function Descriptions.....	5
Applications.....	1	Typical Performance Characteristics .....	6
Functional Block Diagram .....	1	$f_{RFIN}$ at 100 MHz .....	6
General Description .....	1	$f_{RFIN}$ at 2.5 GHz .....	7
Specifications.....	3	$f_{RFIN}$ at 5 GHz .....	8
Absolute Maximum Ratings.....	4	Evaluation Board .....	9
ESD Caution.....	4	Outline Dimensions .....	11

## SPECIFICATIONS

$f_{IF\ OUT} = f_{RF\ IN} - f_{LO}$  (downconverter, upper sideband),  $f_{RF\ IN} = 0.1\ GHz\ to\ 5\ GHz$ ,  $P_{RF\ IN} = -10\ dBm$ ,  $P_{LO} = 18\ dBm$ ,  $T_A = 25^\circ C$ .

Table 1.

Parameter	Test Conditions	Min	Typ	Max	Unit
<b>RF INPUT INTERFACE</b>					
Return Loss		7	10		dB
Input Impedance			50		$\Omega$
RF Input Frequency Range		6000		26,500	MHz
<b>IF INTERFACE</b>					
Return Loss		7	10		dB
IF Impedance			50		$\Omega$
IF Frequency Range		DC		5000	MHz
<b>LO INTERFACE</b>					
LO Power			18		dBm
Return Loss		9	10		dB
Input Impedance			50		$\Omega$
LO Frequency Range		6000		26,500	MHz
<b>DOWNCONVERTER DYNAMIC PERFORMANCE at <math>f_{IF\ OUT} = 100\ MHz</math></b>					
Conversion Loss			10		dB
Input Third-Order Intercept		19	25		dBm
Image Rejection		18	26		dB
LO to RF Isolation <sup>1</sup>			35		dB
LO to IF Isolation <sup>1</sup>			35		dB
RF to IF Isolation <sup>1</sup>			18		dB
Phase Balance			TBD		Degrees
Amplitude Balance			TBD		dB
<b>DOWNCONVERTER DYNAMIC PERFORMANCE at <math>f_{IF\ OUT} = 2.5\ GHz</math></b>					
Conversion Loss			10		dB
Input Third-Order Intercept		20	24		dBm
Image Rejection		25	30		dB
LO to RF Isolation <sup>1</sup>			35		dB
LO to IF Isolation <sup>1</sup>			35		dB
RF to IF Isolation <sup>1</sup>			18		dB
Phase Balance		-10			Degrees
Amplitude Balance		-0.5	0	+0.6	dB
<b>DOWNCONVERTER DYNAMIC PERFORMANCE at <math>f_{IF\ OUT} = 5\ GHz</math></b>					
Conversion Loss			11		dB
Input Third-Order Intercept		20	25		dBm
Image Rejection		18	24		dB
LO to RF Isolation <sup>1</sup>			35		dB
LO to IF Isolation <sup>1</sup>			35		dB
RF to IF Isolation <sup>1</sup>			18		dB
Balance			TBD		Degrees
Amplitude Balance			TBD		dB

<sup>1</sup> See the Typical Performance Characteristics section.

## ABSOLUTE MAXIMUM RATINGS

Table 2.

Parameter	Rating
RFIN Power	TBD
LO Drive	TBD
Channel Temperature	TBD
Continuous P <sub>DISS</sub> (T = 85°C) (Derate 9.8 mW/°C above 85°C)	TBD
Thermal Resistance (R <sub>TH</sub> ) (Junction to Die Bottom)	TBD
Operating Temperature Range	–40°C to +85°C
Storage Temperature Range	–65°C to +150°C
ESD Sensitivity (HBM)	TBD

Stresses above those listed under Absolute Maximum Ratings may cause permanent damage to the device. This is a stress rating only; functional operation of the device at these or any other conditions above those indicated in the operational section of this specification is not implied. Exposure to absolute maximum rating conditions for extended periods may affect device reliability.

### ESD CAUTION



**ESD (electrostatic discharge) sensitive device.** Charged devices and circuit boards can discharge without detection. Although this product features patented or proprietary protection circuitry, damage may occur on devices subjected to high energy ESD. Therefore, proper ESD precautions should be taken to avoid performance degradation or loss of functionality.



### PIN CONFIGURATION AND FUNCTION DESCRIPTIONS

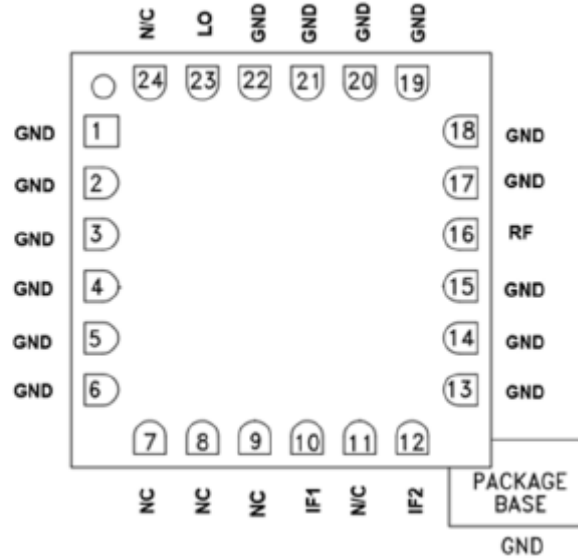


Figure 2. Pin Configuration

Table 3. Pin Function Descriptions

Pin No.	Mnemonic	Description
7 to 9, 11, 24	NC	No Connect. These pins may be connected to RF/dc ground without affecting performance.
1 to 6, 13, 14, 17 to 22 10, 12	GND IF1, IF2	Ground. These pins and package bottom must be connected to RF/dc ground. These pins are dc-coupled. For applications not requiring operations to dc, this port should be dc blocked externally using a series capacitor whose value is selected to pass the necessary IF frequency range. For operations to dc, this pin must not source/sink more than 3 mA of current, otherwise, the device does not function and may fail.
16	RF	This pin is dc-coupled and matched to 50 Ω.
23	LO	This pin is dc-coupled and matched to 50 Ω.

# TYPICAL PERFORMANCE CHARACTERISTICS

## $f_{RFIN}$ at 100 MHz

$f_{IFOUT} = f_{LO} - f_{RFIN}$  (downconverter, lower sideband),  $f_{RFIN} = 100$  MHz,  $P_{RFIN} = -10$  dBm,  $P_{LO} = 18$  dBm,  $T_A = 25^\circ\text{C}$ .

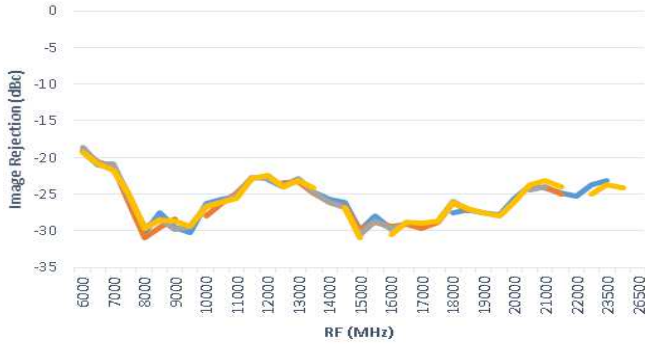


Figure 3. Image Rejection, Downconverter

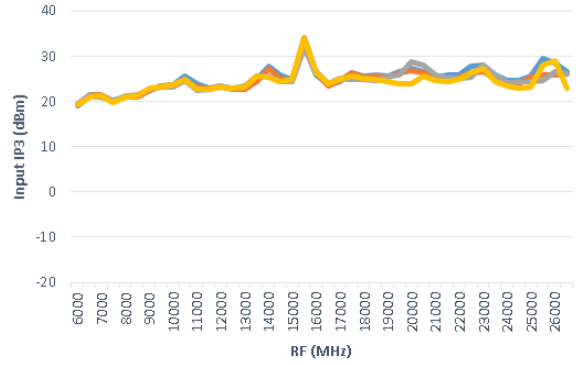


Figure 5. Input IP3, Downconverter

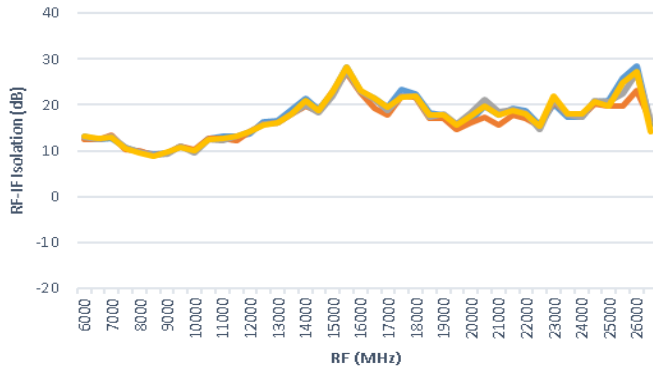


Figure 4. RF to IF Isolation, Downconverter

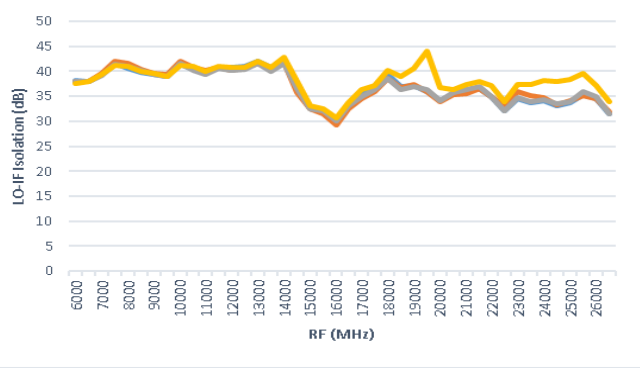


Figure 6. LO to IF Isolation, Downconverter



**f<sub>RFIN</sub> at 2.5 GHz**

f<sub>IFOUT</sub> = f<sub>LO</sub> - f<sub>RFIN</sub> (downconverter, lower sideband), f<sub>RFIN</sub> = 2.5 GHz, P<sub>RFIN</sub> = -10dBm, P<sub>LO</sub> = 14 dBm, 16 dBm, 18 dBm, 20 dBm, T<sub>A</sub> = 25°C.

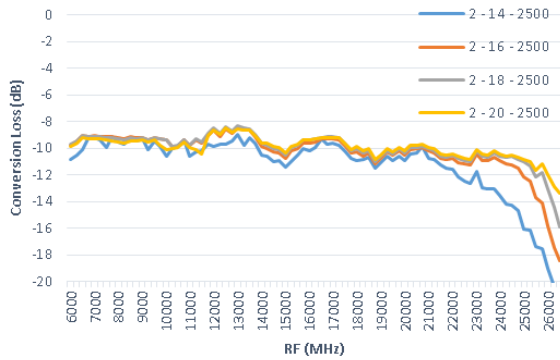


Figure 7. Conversion Loss, Downconverter

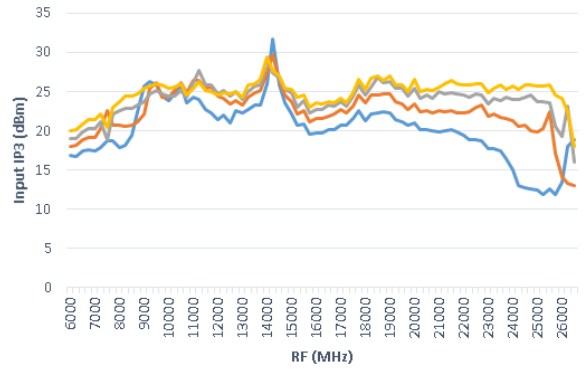


Figure 10. Input IP3, Downconverter

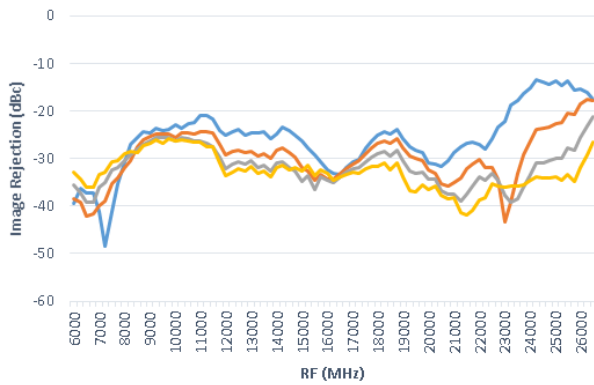


Figure 8. Image Rejection, Downconverter

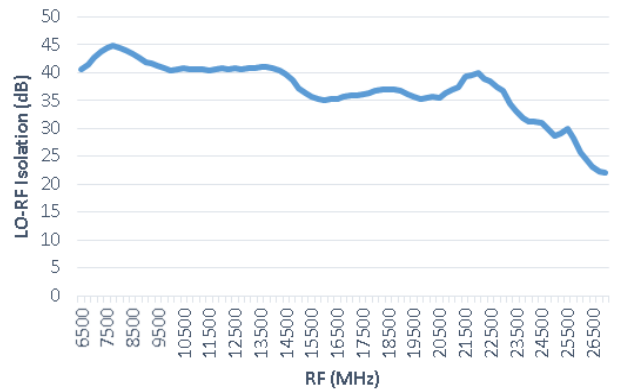


Figure 11. LO to RF Isolation, Downconverter

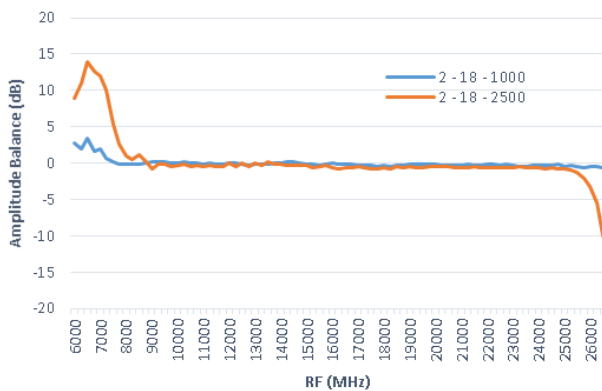


Figure 9. Amplitude Balance, Downconverter

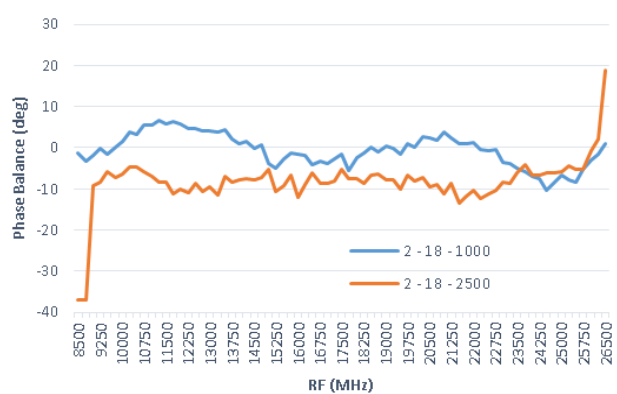


Figure 12. Phase Balance, Downconverter

## $f_{RFIN}$ at 5 GHz

$f_{IFOUT} = f_{LO} - f_{RFIN}$  (downconverter, lower sideband),  $f_{RFIN} = 5$  GHz,  $P_{RFIN} = -10$  dBm,  $P_{LO} = 14$  dBm, 16 dBm, 18 dBm, 20 dBm,  $T_A = 25^\circ\text{C}$ .

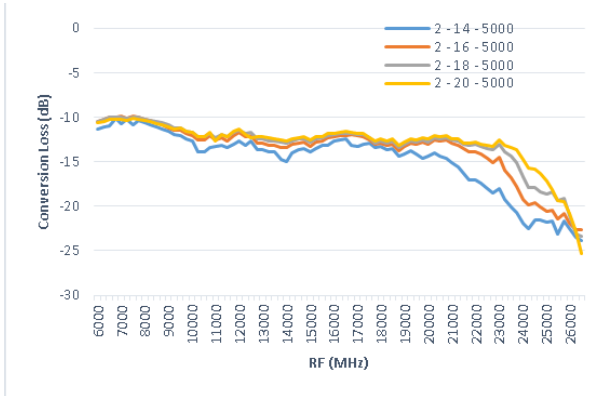


Figure 13. Conversion Loss, Downconverter

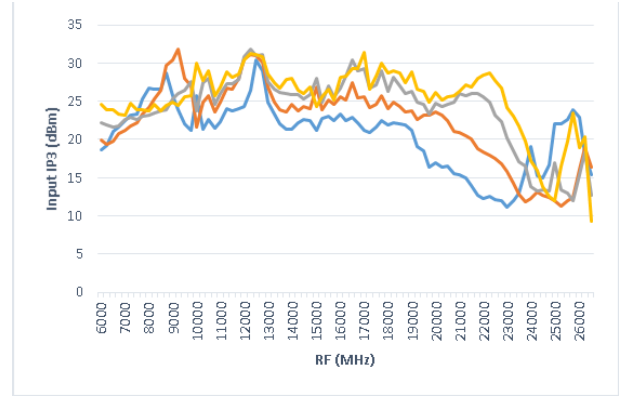


Figure 15. Input IP3, Downconverter

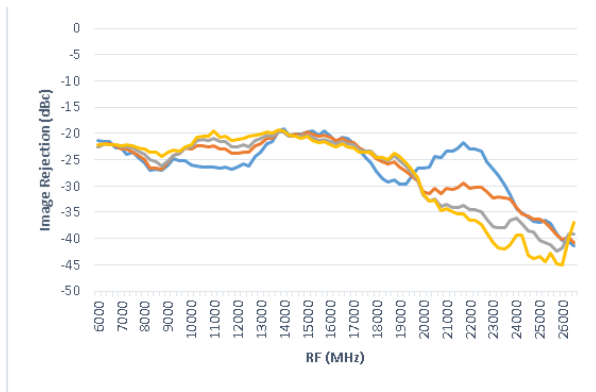
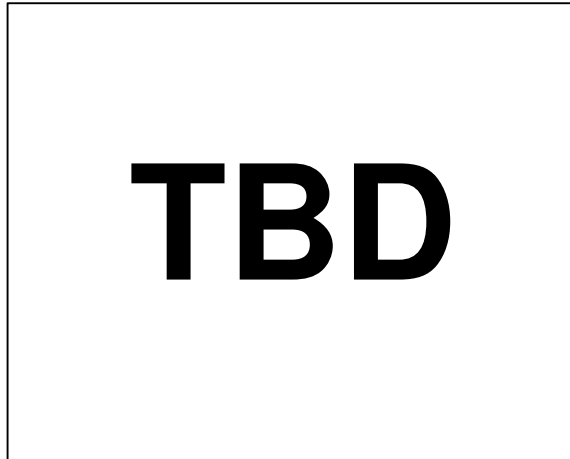


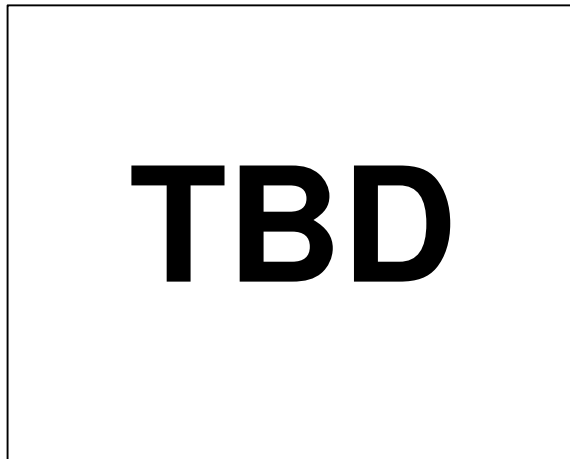
Figure 14. Image Rejection, Downconverter

## EVALUATION BOARD

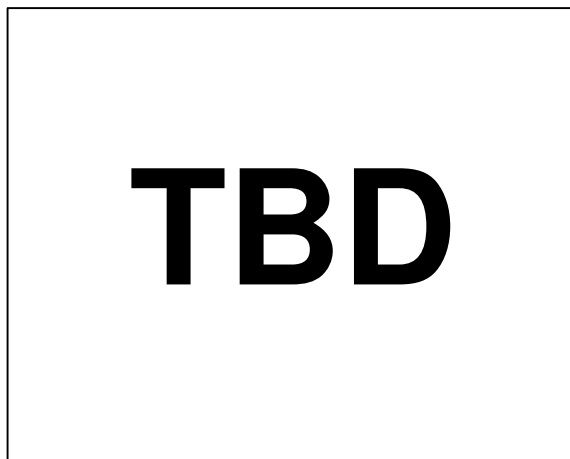
An evaluation board is available for the [HMC8191](#). The standard evaluation board is fabricated using Rogers® RO4003C material. The schematic for the evaluation board is shown in Figure 16.



*Figure 16. Evaluation Board Schematic*



*Figure 17. Evaluation Board, Top Layer*



*Figure 18. Evaluation Board, Bottom Layer*

Table 4 describes the various configuration options for the evaluation board. Layouts for the board are shown in Figure 17 and Figure 18.

**Table 4. Evaluation Board Configuration**

<b>Components</b>	<b>Function</b>	<b>Default Conditions</b>
TBD		

OUTLINE DIMENSIONS

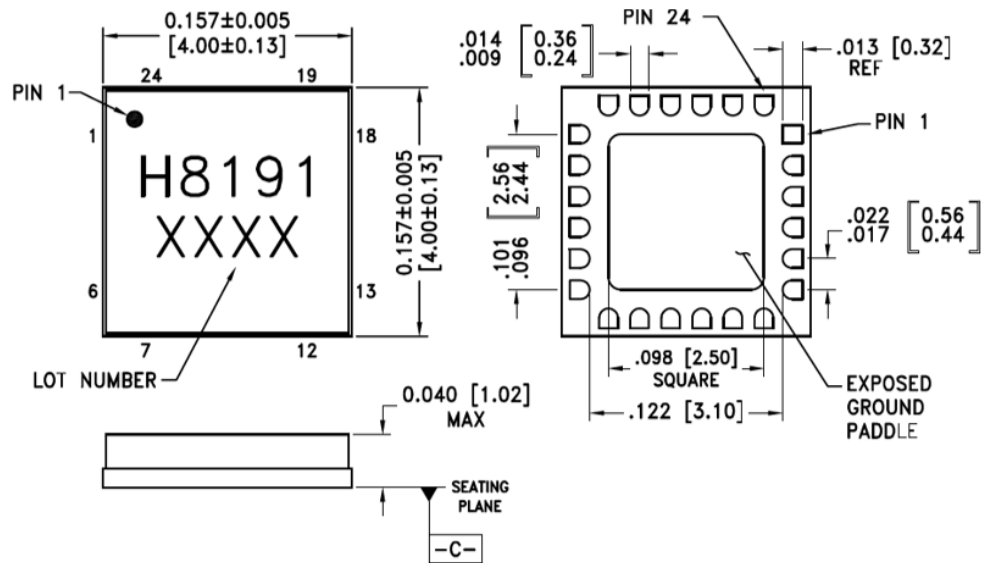


Figure 19. HMC8191 Outline Drawing and Dimensions